

SOUTHPOINTE AT BRECKENRIDGE



PROPERTY HIGHLIGHTS

- 64,242 SF Class B Office Building
- Newly renovated lobby and restrooms
- On-site gym with new equipment
- 24/7 Security System with Card Entry
- Parking ratio over 4/1,000 sf
- Balconies with spectacular views of lake and surrounding park-like area with walking trails
- Intersection of US Highway 301 and I-4 located nearby
- Minutes from I-75 & I-275

THE INFORMATION CONTAINED HEREIN WAS OBTAINED FROM SOURCES BELIEVED RELIABLE; HOWEVER, AVISON YOUNG MAKES NO GUARANTEES, WARRANTIES OR REPRESENTATIONS AS TO THE COMPLETENESS OR ACCURACY THEREOF. THE PRESENTATION OF THIS PROPERTY IS SUBMITTED SUBJECT TO ERRORS, OMISSIONS, CHANGE OF PRICE, OR CONDITIONS, PRIOR TO SALE OR LEASE, OR WITHDRAWAL WITHOUT NOTICE.

For more Information, Contact:

813.288.1800

Michael Coppola

813.444.0625

michael.coppola@avisonyoung.com

Clay Witherspoon

813.444.0626

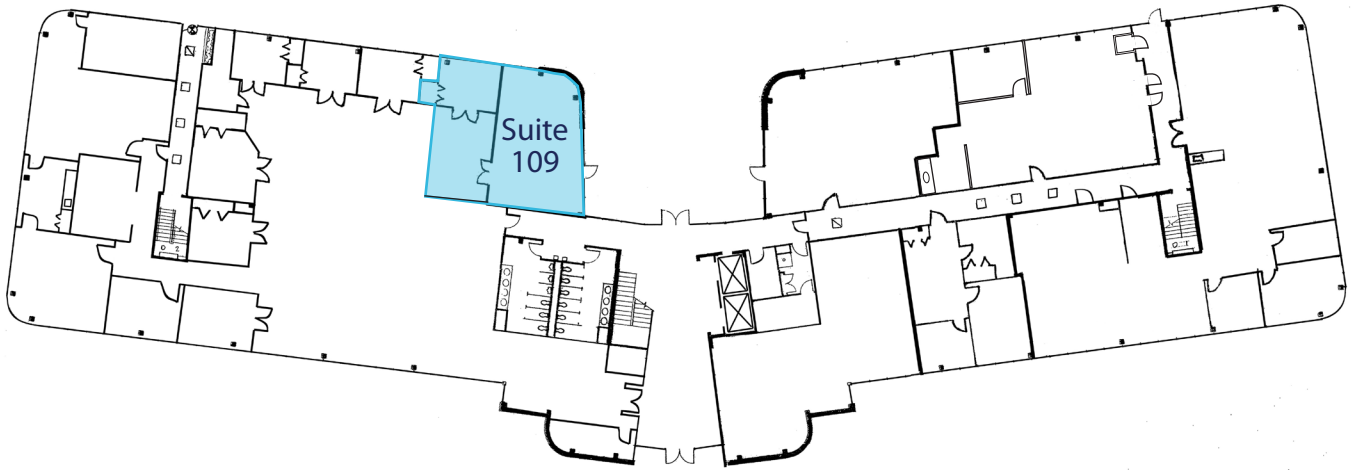
clay.witherspoon@avisonyoung.com

SOUTHPOINTE AT BRECKENRIDGE

5650 BRECKENRIDGE PARK DR., TAMPA, FL 33610

FIRST FLOOR SPACE AVAILABLE

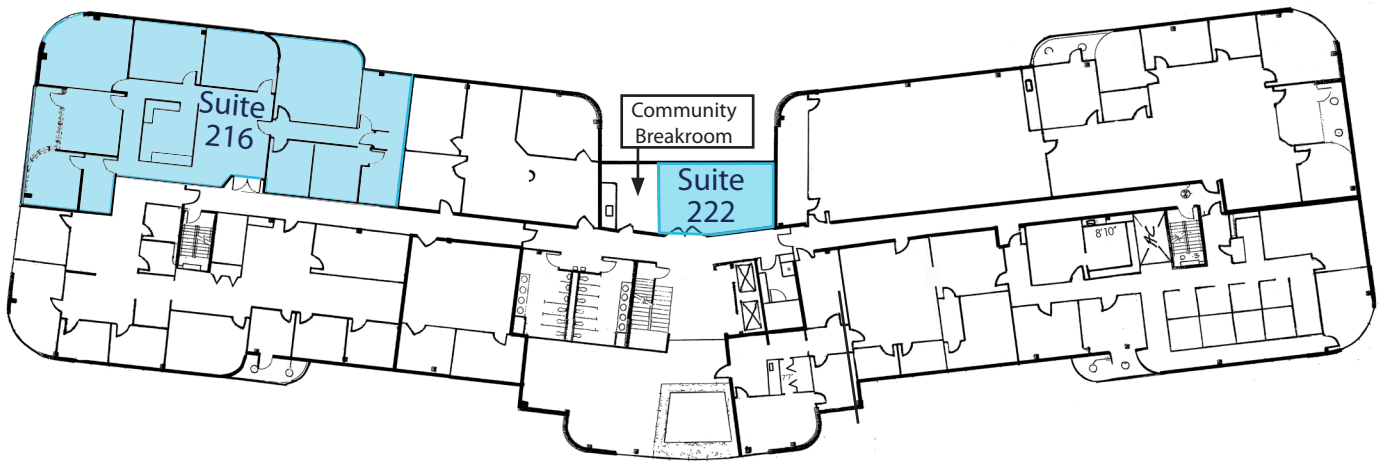
109 - 1,357 SF



SECOND FLOOR SPACE AVAILABLE

216 - 3,762 SF

222 - 433 SF



THIRD FLOOR SPACE AVAILABLE

302 B - 2,940 SF

