

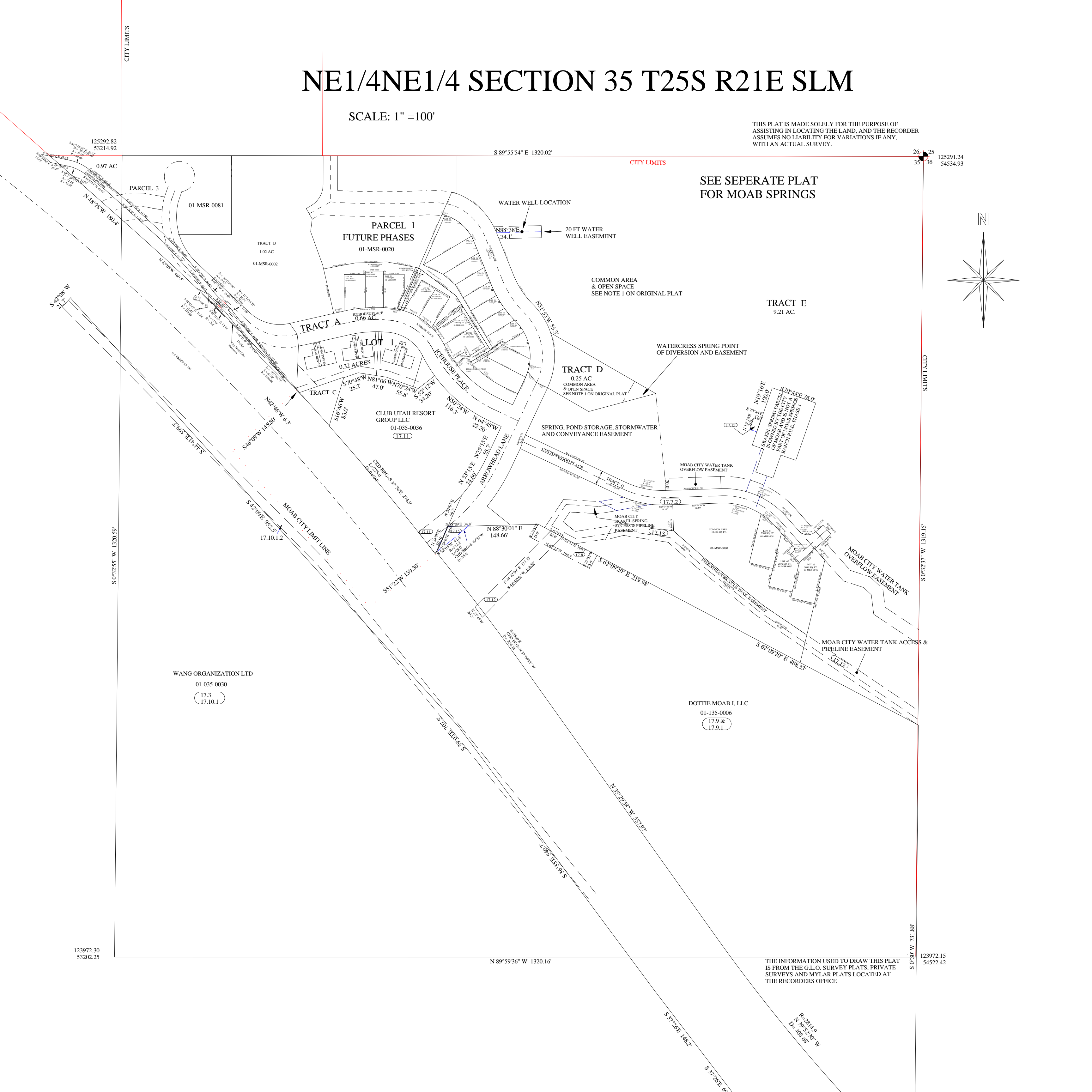
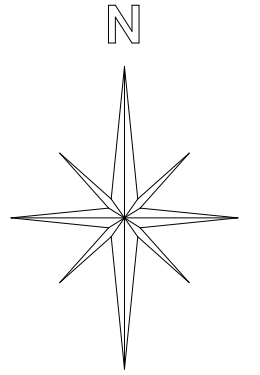




# NE1/4NE1/4 SECTION 35 T25S R21E SLM

SCALE: 1" = 100'

THIS PLAT IS MADE SOLELY FOR THE PURPOSE OF ASSISTING IN LOCATING THE LAND, AND THE RECORDER ASSUMES NO LIABILITY FOR VARIATIONS IF ANY, WITH AN ACTUAL SURVEY.



SEE SEPERATE PLAT FOR MOAB SPRINGS

COMMON AREA & OPEN SPACE  
SEE NOTE 1 ON ORIGINAL PLAT

TRACT E  
9.21 AC.

WATERCRESS SPRING POINT OF DIVERSION AND EASEMENT

TRACT D  
0.25 AC  
COMMON AREA & OPEN SPACE  
SEE NOTE 1 ON ORIGINAL PLAT

SPRING, POND STORAGE, STORMWATER AND CONVEYANCE EASEMENT

MOAB CITY WATER TANK OVERFLOW EASEMENT

MOAB CITY SKARDEL SPRING ACCESS & PIPELINE EASEMENT

MOAB CITY WATER TANK OVERFLOW EASEMENT

MOAB CITY WATER TANK ACCESS & PIPELINE EASEMENT

WANG ORGANIZATION LTD  
01-035-0030  
17.3  
17.10.1

DOTTIE MOAB I, LLC  
01-135-0006  
17.9 &  
17.9.1

THE INFORMATION USED TO DRAW THIS PLAT IS FROM THE G.L.O. SURVEY PLATS, PRIVATE SURVEYS AND MYLAR PLATS LOCATED AT THE RECORDERS OFFICE.

CITY LIMITS

CITY LIMITS

CITY LIMITS

CITY LIMITS

CITY LIMITS

S 89°55'54" E 1320.02'

125291.24  
54534.93

125292.82  
53214.92

123972.30  
53202.25

N 89°59'36" W 1320.16'

123972.15  
54522.42

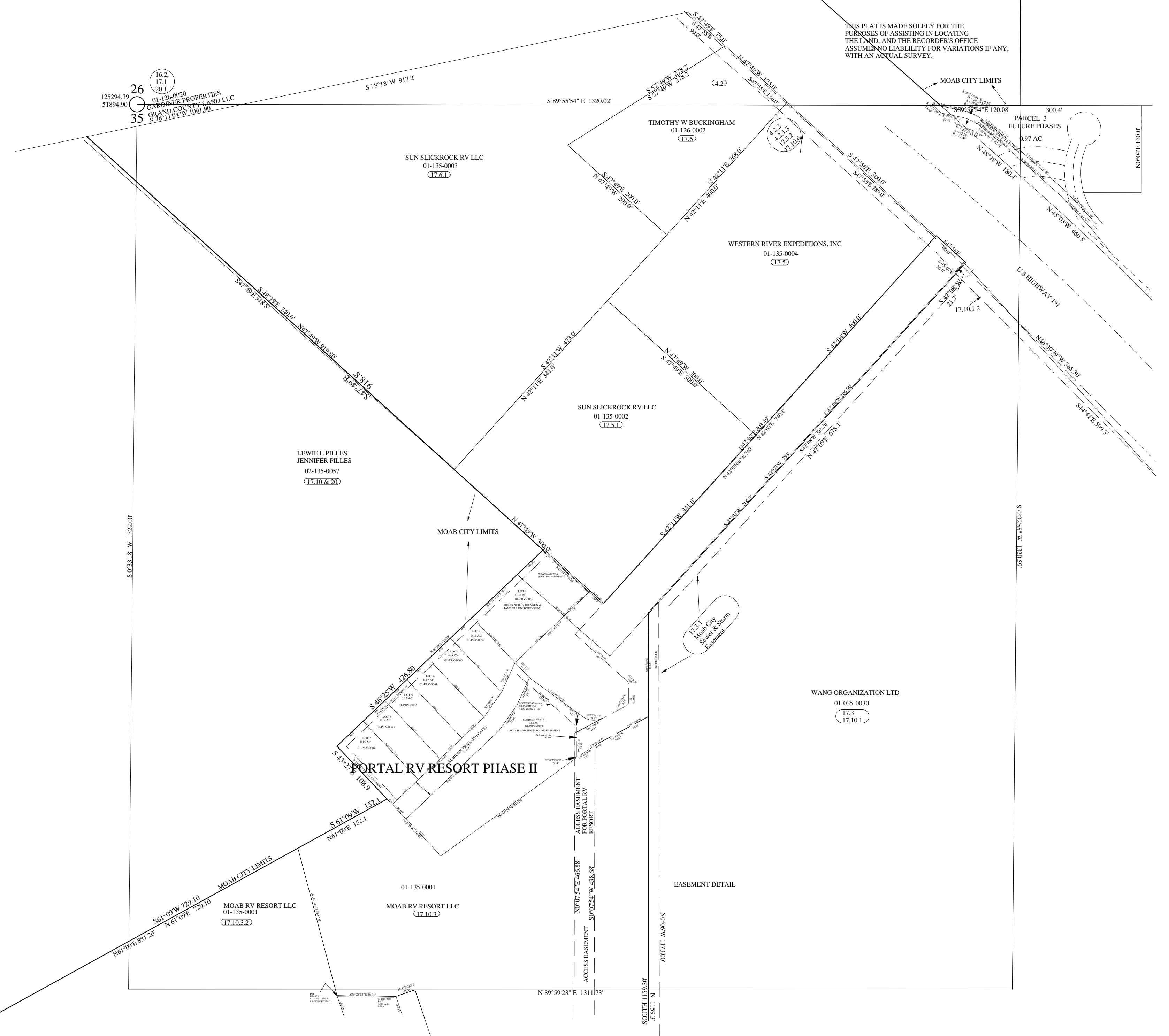
R=2014.9  
N=39°23'30" W  
D=408.68'

S 37°26' E 148.2'

S 37°26' E 69'

# NW1/4NE1/4 SECTION 35 T25S R21E SLM

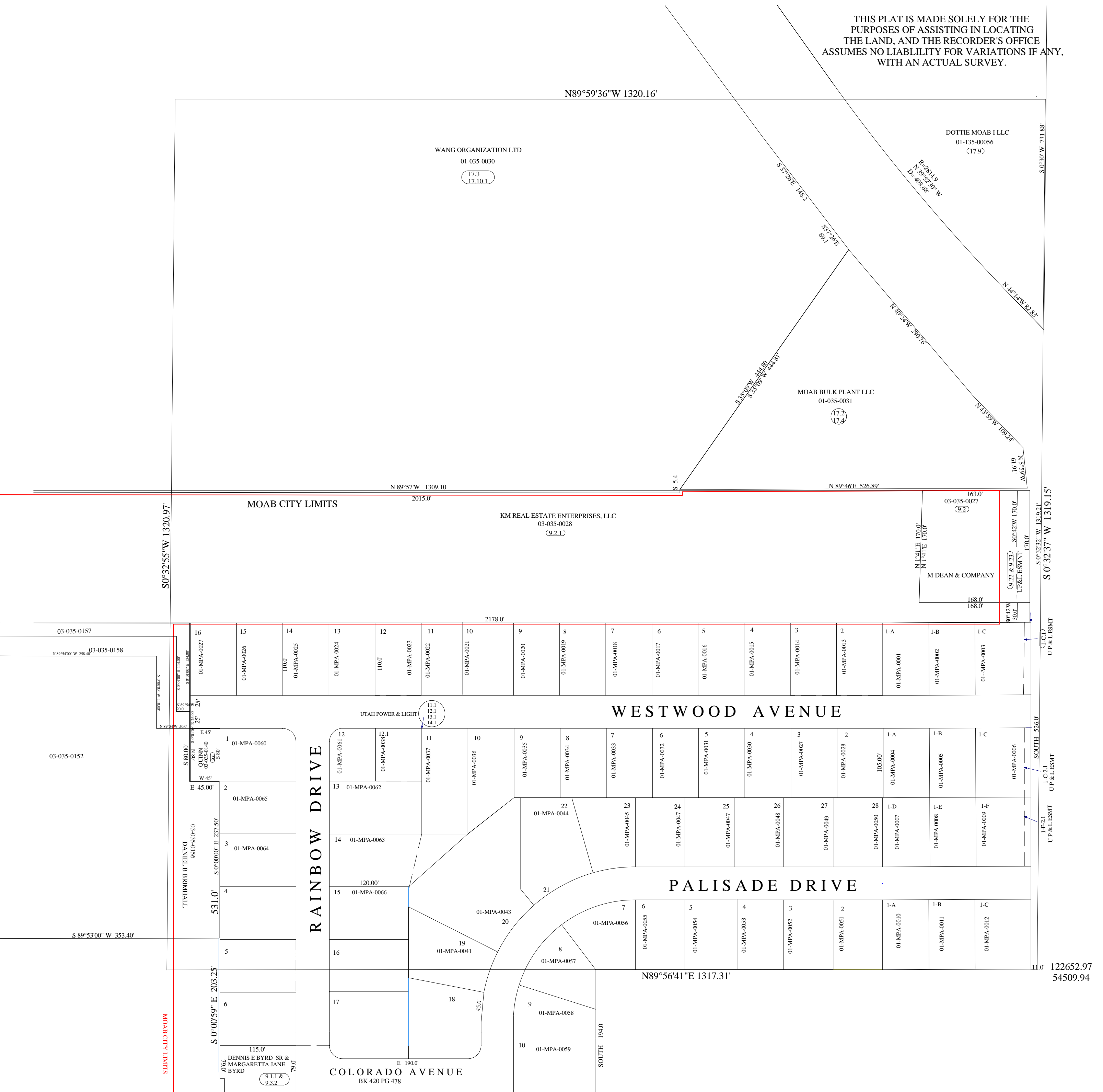
THIS PLAT IS MADE SOLELY FOR THE PURPOSES OF ASSISTING IN LOCATING THE LAND, AND THE RECORDER'S OFFICE ASSUMES NO LIABILITY FOR VARIATIONS IF ANY, WITH AN ACTUAL SURVEY.





# SE1/4NE1/4 SECTION 35 T25S R21E SLM

THIS PLAT IS MADE SOLELY FOR THE PURPOSES OF ASSISTING IN LOCATING THE LAND, AND THE RECORDER'S OFFICE ASSUMES NO LIABILITY FOR VARIATIONS IF ANY, WITH AN ACTUAL SURVEY.



WANG ORGANIZATION LTD  
01-035-0030  
17.3  
17.10.1

DOTTIE MOAB I LLC  
01-135-00056  
17.9

MOAB BULK PLANT LLC  
01-035-0031  
17.2  
17.4

KM REAL ESTATE ENTERPRISES, LLC  
03-035-0028  
9.2.1

03-035-0027  
163.0'  
9.2

M DEAN & COMPANY  
168.0'  
168.0'  
80.42' W  
30.0'

MOAB CITY LIMITS

MOAB CITY LIMITS

WESTWOOD AVENUE

PALISADE DRIVE

RAINBOW DRIVE

COLORADO AVENUE  
BK 420 PG 478

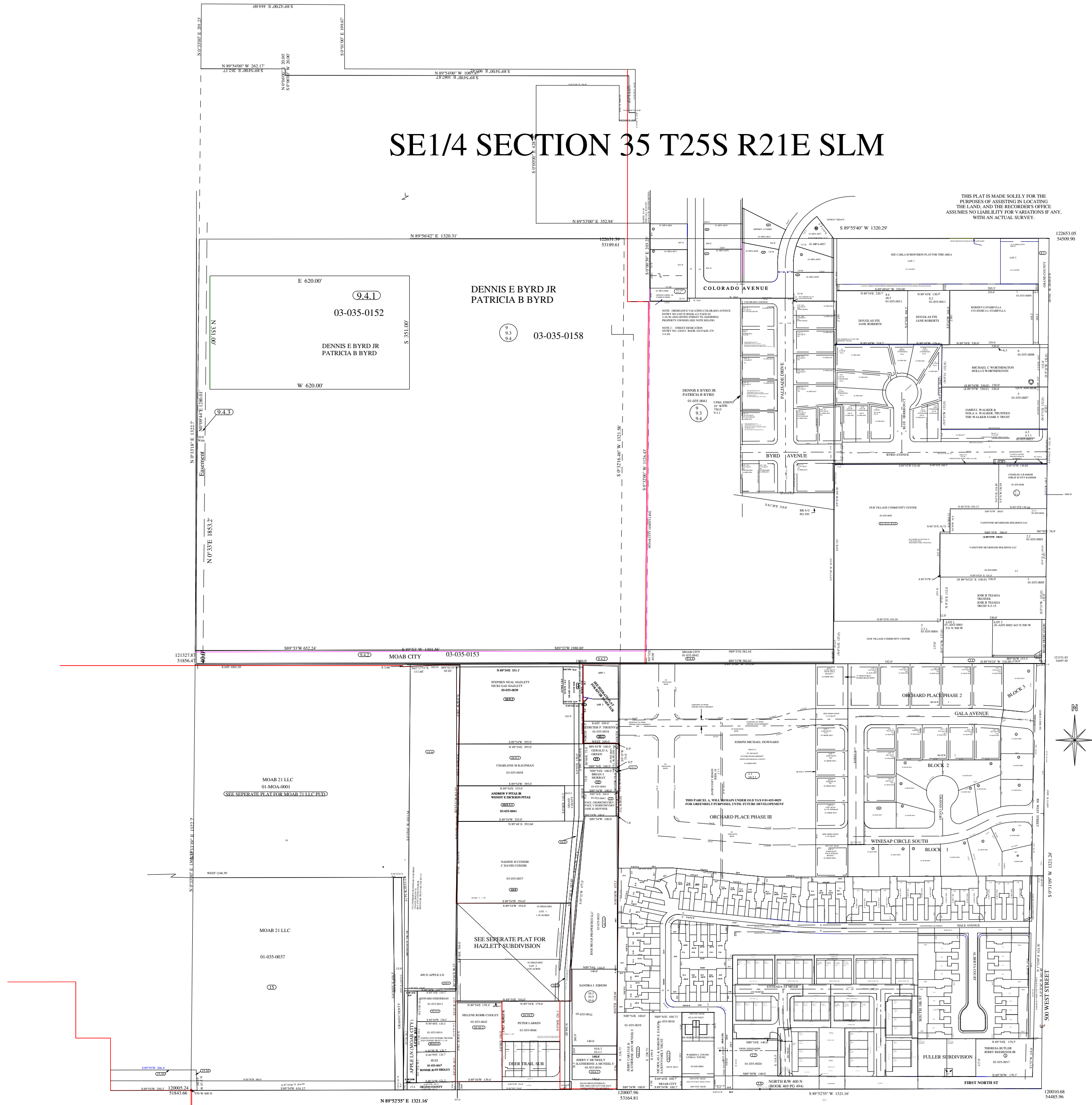
122652.97  
54509.94





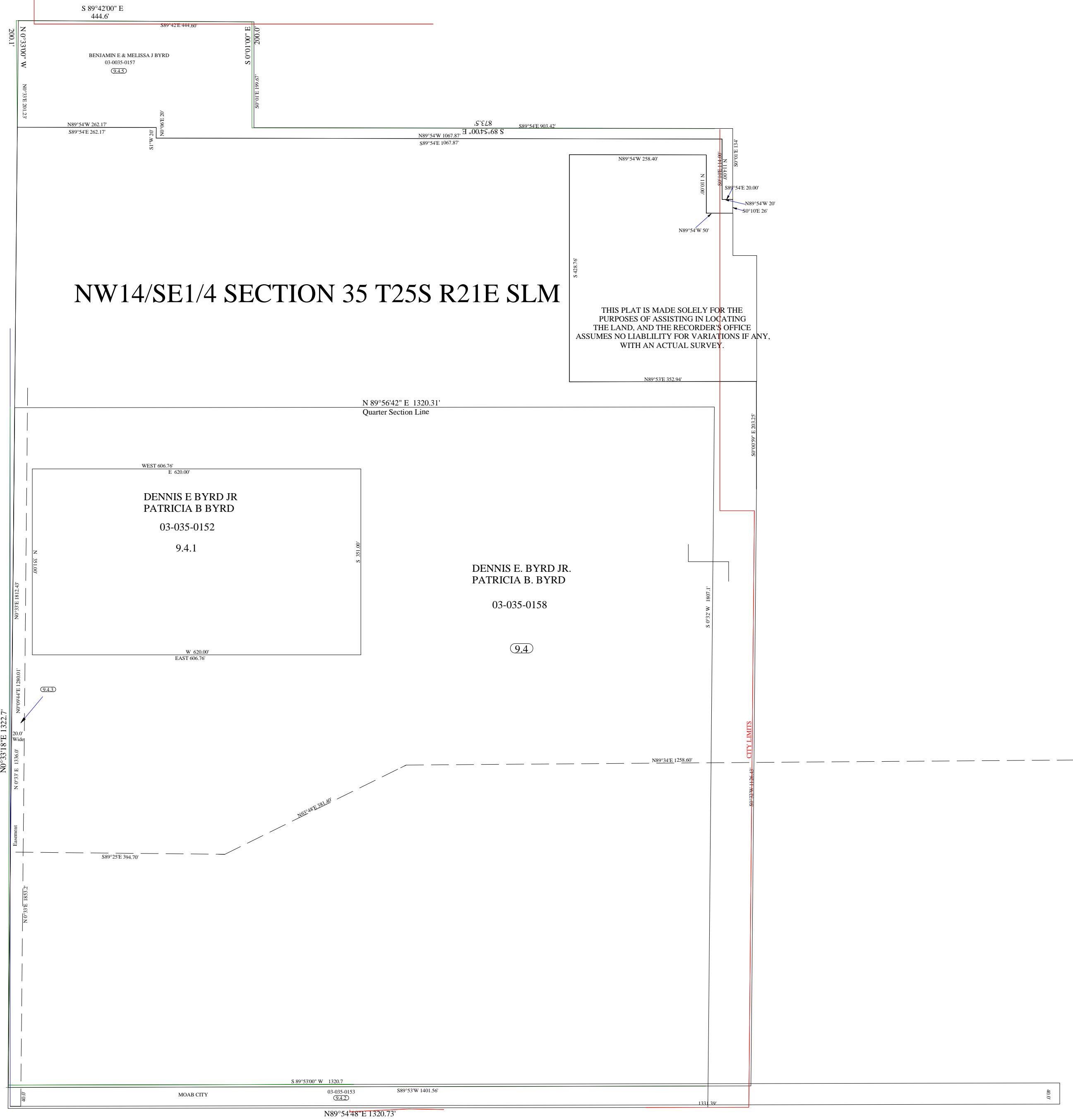
# SE1/4 SECTION 35 T25S R21E SLM

THIS PLAT IS MADE SOLELY FOR THE PURPOSES OF ASSISTING IN LOCATING THE LAND, AND THE RECORDERS OFFICE ASSUMES NO LIABILITY FOR VARIATIONS IF ANY, WITH AN ACTUAL SURVEY.



THE INFORMATION USED TO DRAW THIS PLAT IS FROM THE G.L.O. SURVEY PLATS, PRIVATE SURVEYS AND MEYAR PLATS LOCATED AT THE RECORDERS OFFICE.





S 89°42'00" E  
444.6'

BENJAMIN E & MELISSA J BYRD  
03-0035-0157  
9.3.3

N89°54'W 262.17'  
S89°54'E 262.17'

S10°06'E 20'

S 0°01'00" E  
200.0'

S89°42'E 444.60'

S 0°01'00" E

N89°54'W 1067.87'  
S89°54'E 1067.87'

S89°54'E 903.47'

N89°54'W 258.40'

N89°54'W 50'

S 428.76'

S89°54'E 20.00'

N89°54'W 20'

S0°10'E 26'

N89°53'E 352.94'

N 89°56'42" E 1320.31'  
Quarter Section Line

WEST 606.76'  
E 620.00'

DENNIS E BYRD JR  
PATRICIA B BYRD

03-035-0152

9.4.1

S 351.00'

W 620.00'  
EAST 606.76'

DENNIS E. BYRD JR.  
PATRICIA B. BYRD

03-035-0158

9.4

S 0°32'W 1807.1'

CITY LIMITS

N89°34'E 1258.60'

N03°49'E 281.00'

S89°25'E 394.70'

S 89°53'00" W 1320.7'

03-035-0153  
9.4.2

S89°53'W 1401.56'

N89°54'48" E 1320.73'

40.0'



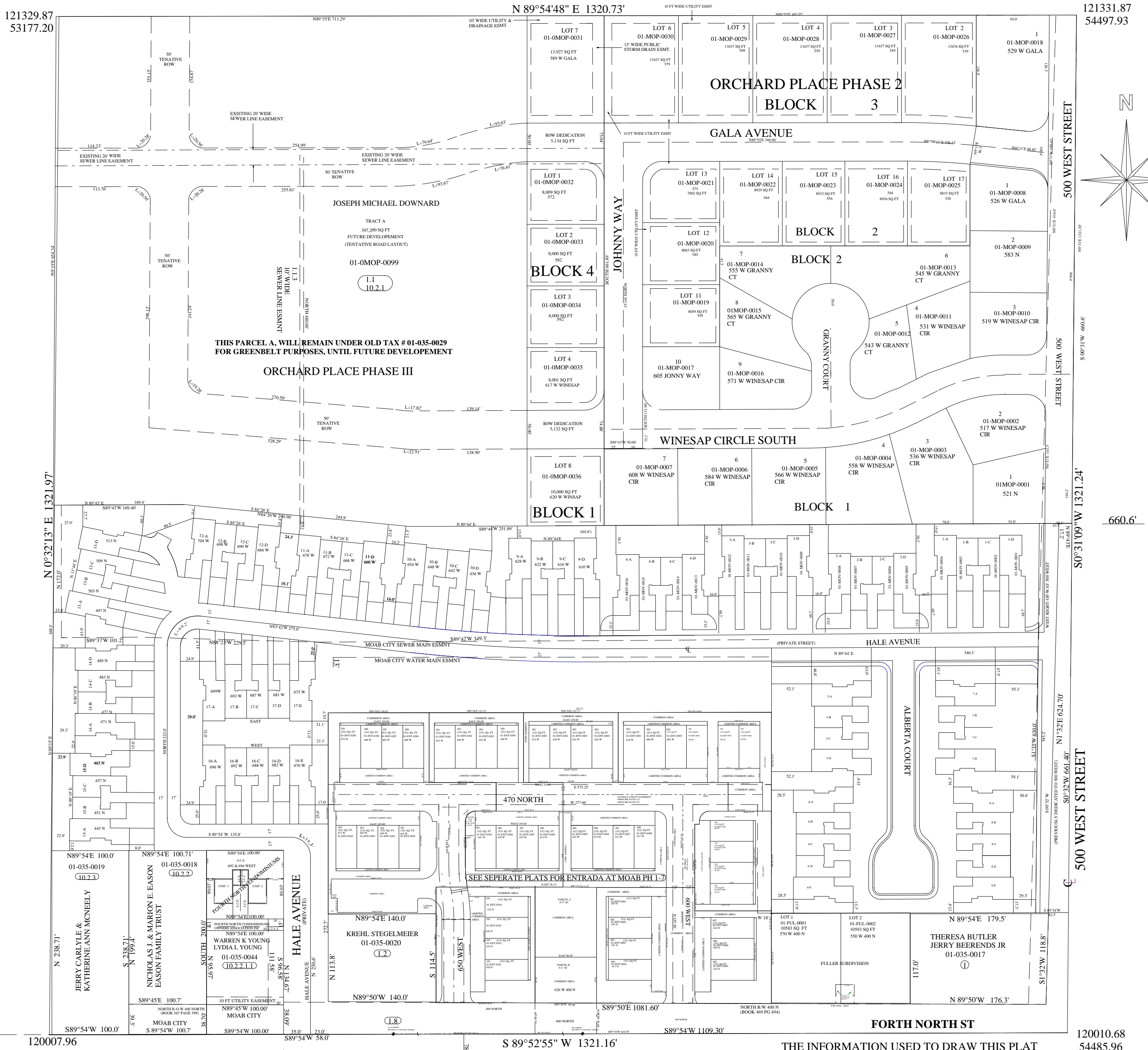
# SE1/4SE1/4 SECTION 35 T25S R21E SLM

SCALE: 1" = 100'

THIS PLAT IS MADE SOLELY FOR THE PURPOSE OF ASSISTING IN LOCATING THE LAND, AND THE RECORDER ASSUMES NO LIABILITY FOR VARIATIONS IF ANY, WITH AN ACTUAL SURVEY.

121329.87  
53177.20

121331.87  
54497.93



N 0°32'13" E 1321.97'

S 0°31'09" W 1321.24'

660.6'

120007.96  
53164.81

S 89°52'55" W 1321.16'

120010.68  
54485.96

THE INFORMATION USED TO DRAW THIS PLAT IS FROM THE G.L.O. SURVEY PLATS, PRIVATE SURVEYS AND MYLAR PLATS LOCATED AT THE RECORDERS OFFICE

EASON  
698 W 400 N  
MOAB UT 84532

ROUSER  
270 STEWART LN  
MOAB UT 84532

1017.30'

