



4533 Sunbeam

4533 Sunbeam Road
Jacksonville, FL 32257

Property Features

- › Street frontage with visibility and signage on Sunbeam Road
- › 20,000 daily traffic count on Sunbeam Road
- › Strong demographics with many residential developments in the immediate area, ideal for small retail, office or service businesses
- › Corner dry cleaners located on the endcap draws traffic into the property



AVAILABLE SF:	1,424 SF
LEASE RATE:	\$1,300 per month (plus utilities)
LOT SIZE:	0.29 Acres
BUILDING SIZE:	4,918 SF

Demographics

	1 MILE	3 MILES	5 MILES
TOTAL HOUSEHOLDS:	3,928	27,407	59,761
TOTAL POPULATION:	9,559	64,103	143,535
AVERAGE HH INCOME:	\$57,560	\$64,526	\$74,215

For more information:



Carmen Mantay

904 553 5238
cm@naihallmark.com



Luke Feldman

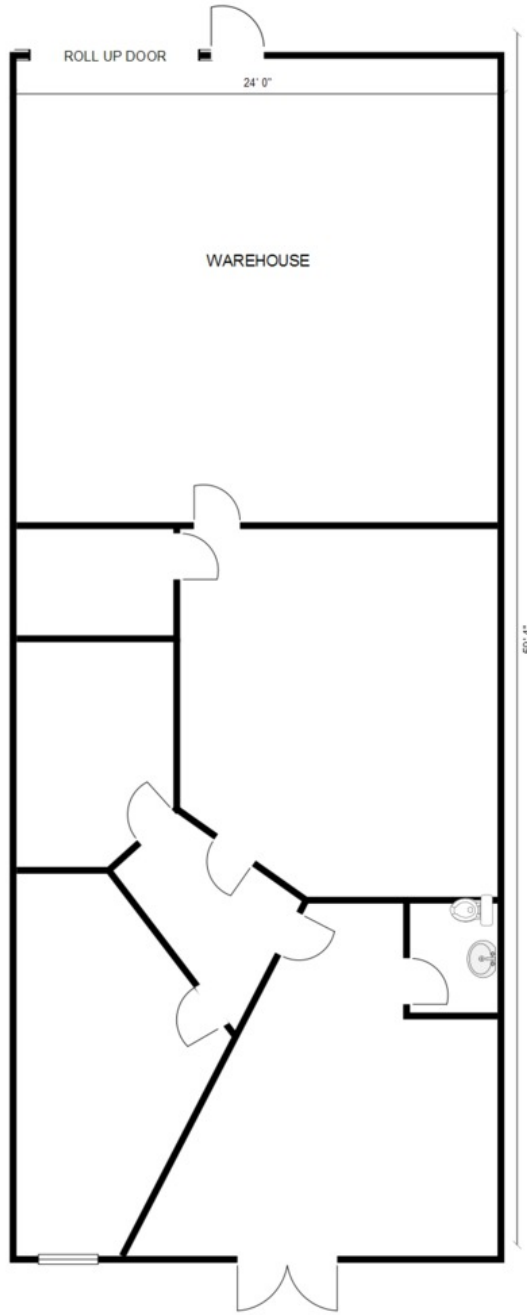
904 404 4461
lf@naihallmark.com

NO WARRANTY OR REPRESENTATION, EXPRESS OR IMPLIED, IS MADE AS TO THE ACCURACY OF THE INFORMATION CONTAINED HEREIN, AND THE SAME IS SUBMITTED SUBJECT TO ERRORS, OMISSIONS, CHANGE OF PRICE, RENTAL OR OTHER CONDITIONS, PRIOR SALE, LEASE OR FINANCING, OR WITHDRAWAL WITHOUT NOTICE, AND OF ANY SPECIAL LISTING CONDITIONS IMPOSED BY OUR PRINCIPALS NO WARRANTIES OR REPRESENTATIONS ARE MADE AS TO THE CONDITION OF THE PROPERTY OR ANY HAZARDS CONTAINED THEREIN ARE ANY TO BE IMPLIED.

6675 Corporate Center Parkway, Suite 100
Jacksonville, FL 32216
+1 904 363 9002

naihallmark.com

For Lease
1,424 SF
Unit 803



For Lease
Retail
1,424 SF

