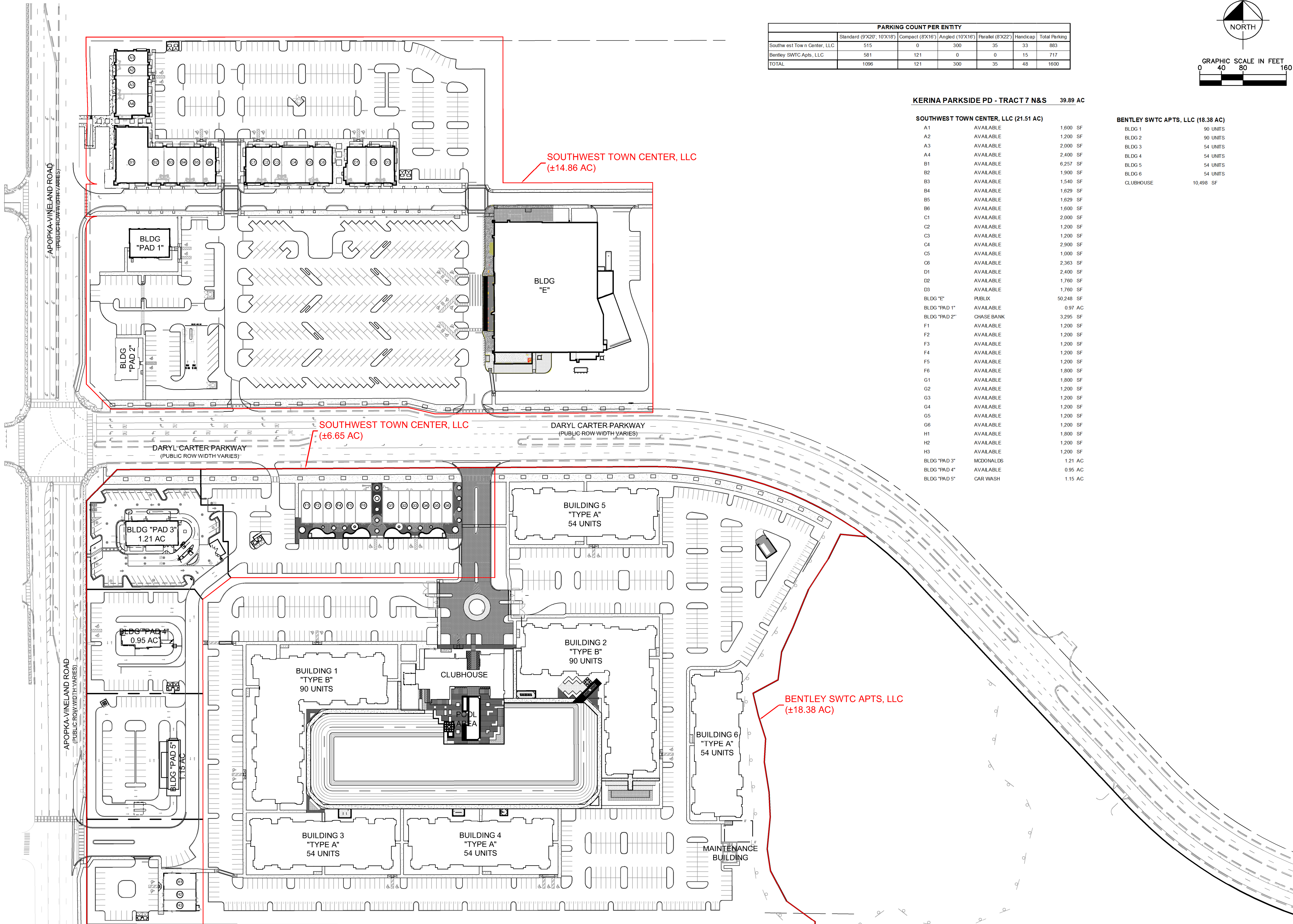
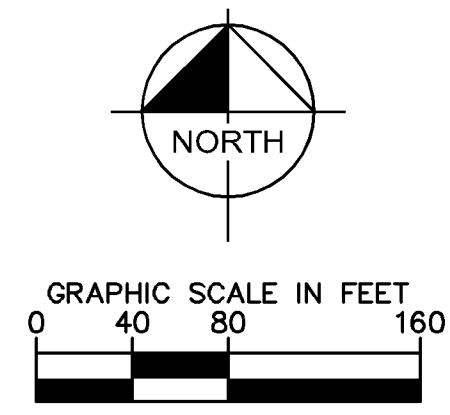


Plotted By: Gonzalez, Randy - Sheet: Ssk-Tract 7 - North - Towncenter - CD - Layout: Overall - April 30, 2020 - 11:05:09am - K:\ORL\GVA\145181023-kerina\GADD_EXHIBITS\Leasing Exhibit\2020-04-08 - Overall Leasing Exhibit.dwg
 This document, together with the concepts and designs presented herein, is intended only for the specific purpose and client for which it was prepared. Reuse of and improper reliance on this document without written authorization and adaptation by Kimley-Horn and Associates, Inc. shall be without liability to Kimley-Horn and Associates, Inc.



	PARKING COUNT PER ENTITY					
	Standard (9'X20', 10'X18')	Compact (8'X16')	Angled (10'X16')	Parallel (8'X22')	Handicap	Total Parking
Southwest Town Center, LLC	515	0	300	35	33	883
Bentley SWTC Apts, LLC	581	121	0	0	15	717
TOTAL	1096	121	300	35	48	1600



KERINA PARKSIDE PD - TRACT 7 N&S 39.89 AC

SOUTHWEST TOWN CENTER, LLC (21.51 AC)		
A1	AVAILABLE	1,800 SF
A2	AVAILABLE	1,200 SF
A3	AVAILABLE	2,000 SF
A4	AVAILABLE	2,400 SF
B1	AVAILABLE	6,257 SF
B2	AVAILABLE	1,900 SF
B3	AVAILABLE	1,540 SF
B4	AVAILABLE	1,629 SF
B5	AVAILABLE	1,629 SF
B6	AVAILABLE	1,600 SF
C1	AVAILABLE	2,000 SF
C2	AVAILABLE	1,200 SF
C3	AVAILABLE	1,200 SF
C4	AVAILABLE	2,900 SF
C5	AVAILABLE	1,000 SF
C6	AVAILABLE	2,363 SF
D1	AVAILABLE	2,400 SF
D2	AVAILABLE	1,760 SF
D3	AVAILABLE	1,760 SF
BLDG "E"	PUBLIX	50,248 SF
BLDG "PAD 1"	AVAILABLE	0.97 AC
BLDG "PAD 2"	CHASE BANK	3,295 SF
F1	AVAILABLE	1,200 SF
F2	AVAILABLE	1,200 SF
F3	AVAILABLE	1,200 SF
F4	AVAILABLE	1,200 SF
F5	AVAILABLE	1,200 SF
F6	AVAILABLE	1,800 SF
G1	AVAILABLE	1,800 SF
G2	AVAILABLE	1,200 SF
G3	AVAILABLE	1,200 SF
G4	AVAILABLE	1,200 SF
G5	AVAILABLE	1,200 SF
G6	AVAILABLE	1,200 SF
H1	AVAILABLE	1,800 SF
H2	AVAILABLE	1,200 SF
H3	AVAILABLE	1,200 SF
BLDG "PAD 3"	MCDONALDS	1.21 AC
BLDG "PAD 4"	AVAILABLE	0.95 AC
BLDG "PAD 5"	CAR WASH	1.15 AC

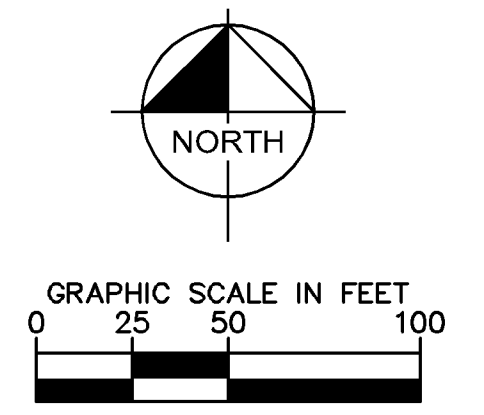
BENTLEY SWTC APTS, LLC (18.38 AC)	
BLDG 1	90 UNITS
BLDG 2	90 UNITS
BLDG 3	54 UNITS
BLDG 4	54 UNITS
BLDG 5	54 UNITS
BLDG 6	54 UNITS
CLUBHOUSE	10,498 SF

Kimley»Horn	© 2020 KIMLEY-HORN AND ASSOCIATES, INC. 189 S. ORANGE AVENUE, SUITE 1000, ORLANDO, FL 32801 PHONE: 407-898-1511 WWW.KIMLEY-HORN.COM CA 00000696			
	KHA PROJECT 149581023	DATE 04/29/2020	SCALE AS SHOWN	DESIGNED BY JJS
TRACT 7 OVERALL LEASING EXHIBIT	DRAWN BY EGS	CHECKED BY RMG	DATE 04/29/2020	REVISIONS No.
KERINA PARKSIDE PD/TRACT 7 N&S	FLORIDA	ORANGE COUNTY	SHEET NUMBER EX1.0	DATE BY

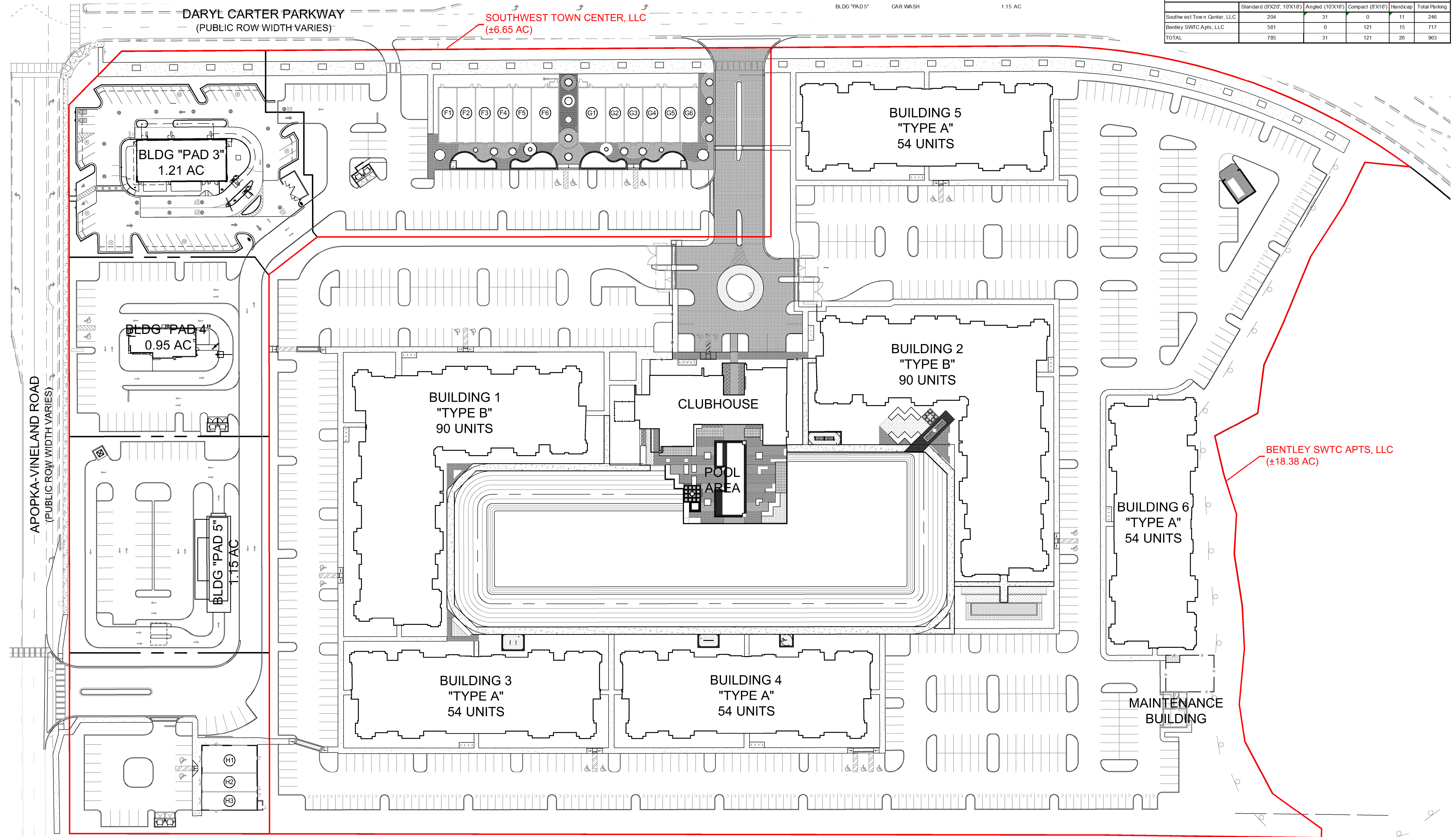
Plotted By: Gonzalez, Randy - Sheet: Ssk-Tract 7 - North - Towncenter - CD - Layout: South - Bentley - April 30, 2020 - 11:10:25am - K:\DR - Civil\149581023-Kerina\CADD\EXHIBITS-Leastina\Exhibit1\2020-04-08 - Overall: Leastina - Exhibitor: Kimley-Horn and Associates, Inc. This document, together with the concepts and designs presented herein, is intended only for the specific purpose and client for which it was prepared. Reuse of and improper reliance on this document without written authorization and adaptation by Kimley-Horn and Associates, Inc. shall be without liability to Kimley-Horn and Associates, Inc.

KERINA PARKSIDE PD - TRACT 7 SOUTH 25.03 AC

SOUTHWEST TOWN CENTER, LLC (6.65 AC)			BENTLEY SWTC APTS, LLC (18.38 AC)		
F1	AVAILABLE	1,200 SF	BLDG 1	90 UNITS	
F2	AVAILABLE	1,200 SF	BLDG 2	90 UNITS	
F3	AVAILABLE	1,200 SF	BLDG 3	54 UNITS	
F4	AVAILABLE	1,200 SF	BLDG 4	54 UNITS	
F5	AVAILABLE	1,200 SF	BLDG 5	54 UNITS	
F6	AVAILABLE	1,800 SF	BLDG 6	54 UNITS	
G1	AVAILABLE	1,800 SF	CLUBHOUSE	10,498 SF	
G2	AVAILABLE	1,200 SF			
G3	AVAILABLE	1,200 SF			
G4	AVAILABLE	1,200 SF			
G5	AVAILABLE	1,200 SF			
G6	AVAILABLE	1,200 SF			
H1	AVAILABLE	1,800 SF			
H2	AVAILABLE	1,200 SF			
H3	AVAILABLE	1,200 SF			
BLDG "PAD 3"	MCDONALDS	1.21 AC			
BLDG "PAD 4"	AVAILABLE	0.95 AC			
BLDG "PAD 5"	CAR WASH	1.15 AC			



	PARKING COUNT PER ENTITY				
	Standard (9'X20', 10'X18')	Angled (10'X16')	Compact (8'X16')	Handicap	Total Parking
Southwest Town Center, LLC	204	31	0	11	246
Bentley SWTC Apts, LLC	581	0	121	15	717
TOTAL	785	31	121	26	963



NO.	REVISIONS	DATE	BY

Kimley»Horn
 © 2020 KIMLEY-HORN AND ASSOCIATES, INC.
 189 S. ORANGE AVENUE, SUITE 1000, ORLANDO, FL 32801
 PHONE: 407-898-1511
 WWW.KIMLEY-HORN.COM CA 00000696

KHA PROJECT 149581023
 DATE 04/29/2020
 SCALE AS SHOWN
 DESIGNED BY JJS
 DRAWN BY EGS
 CHECKED BY RMG
 DATE 04/29/2020

TRACT 7 SOUTH LEASING EXHIBIT

KERINA PARKSIDE PD/TRACT 7 N&S
 ORANGE COUNTY FLORIDA
 SHEET NUMBER EX1.2