

**FOR SUBLEASE**  
±79,533 RSF AVAILABLE  
DIVISIBLE TO ±26,511 RSF  
*(LED: 05/31/2027)*



# 10375

PROFESSIONAL CIRCLE, RENO NV 89521

**Matt Grimes**  
First Vice President  
+1 775 356 6290  
matt.grimes@cbre.com  
Lic S.0072644.LLC.  
[www.cbre.us/matt.grimes](http://www.cbre.us/matt.grimes)  
[www.cbre.us/reno](http://www.cbre.us/reno)

**David Woods, CCIM**  
First Vice President  
+1 775 321 4459  
david.woods@cbre.com  
Lic S.0072655.LLC.  
[www.cbre.us/david.woods](http://www.cbre.us/david.woods)  
[www.cbre.us/reno](http://www.cbre.us/reno)

**Leahna Chapman**  
Associate  
+1 775 823 6937  
leahna.chapman@cbre.com  
Lic S.0183267.LLC.  
[www.cbre.us/leahna.chapman](http://www.cbre.us/leahna.chapman)  
[www.cbre.us/reno](http://www.cbre.us/reno)

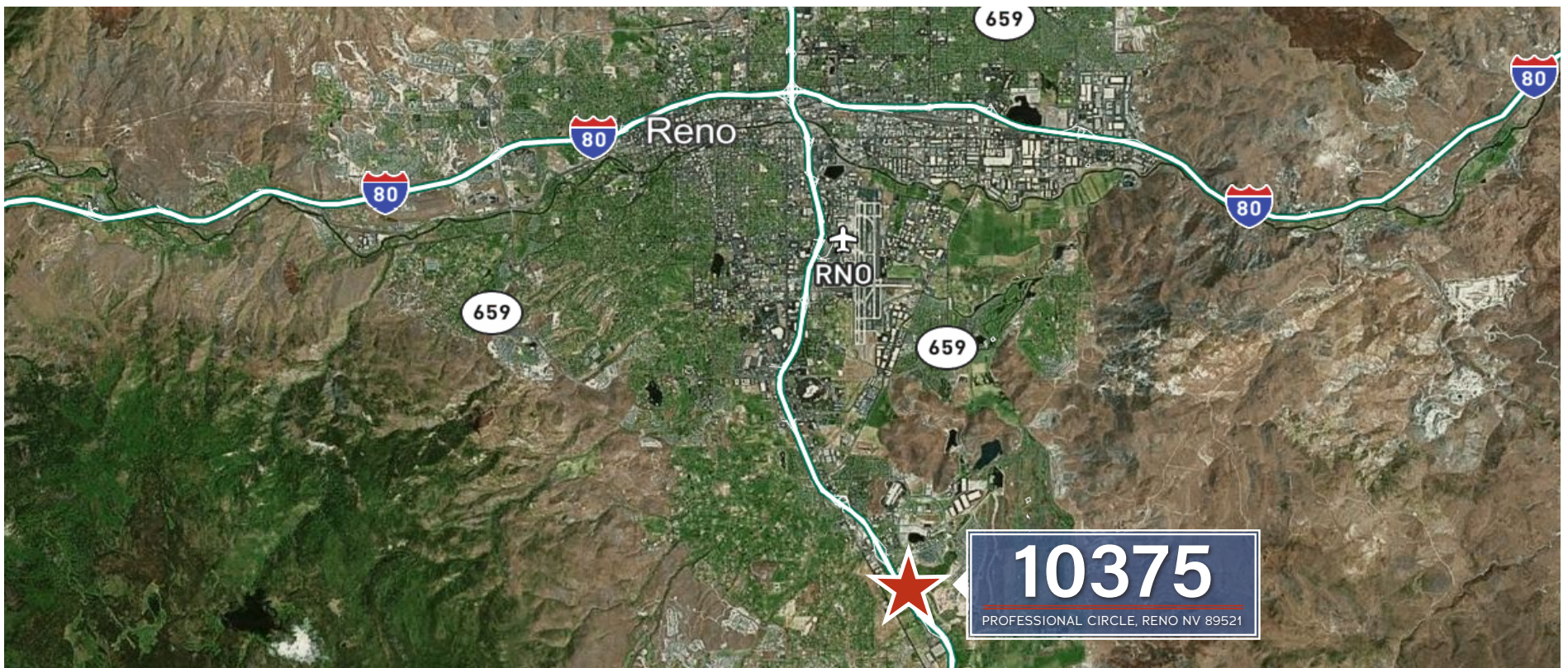
**CBRE**

Plug & Play

## PROPERTY DESCRIPTION

Three story freeway fronting office building located in the heart of the Reno Tahoe Technology Center in the South Reno Submarket. The three story Class A office building offers abundant natural light with recently renovated modern finishes throughout. This location along the I580 Freeway provides excellent visibility and branding opportunities with sweeping views of the surrounding Sierra Nevada mountain range.

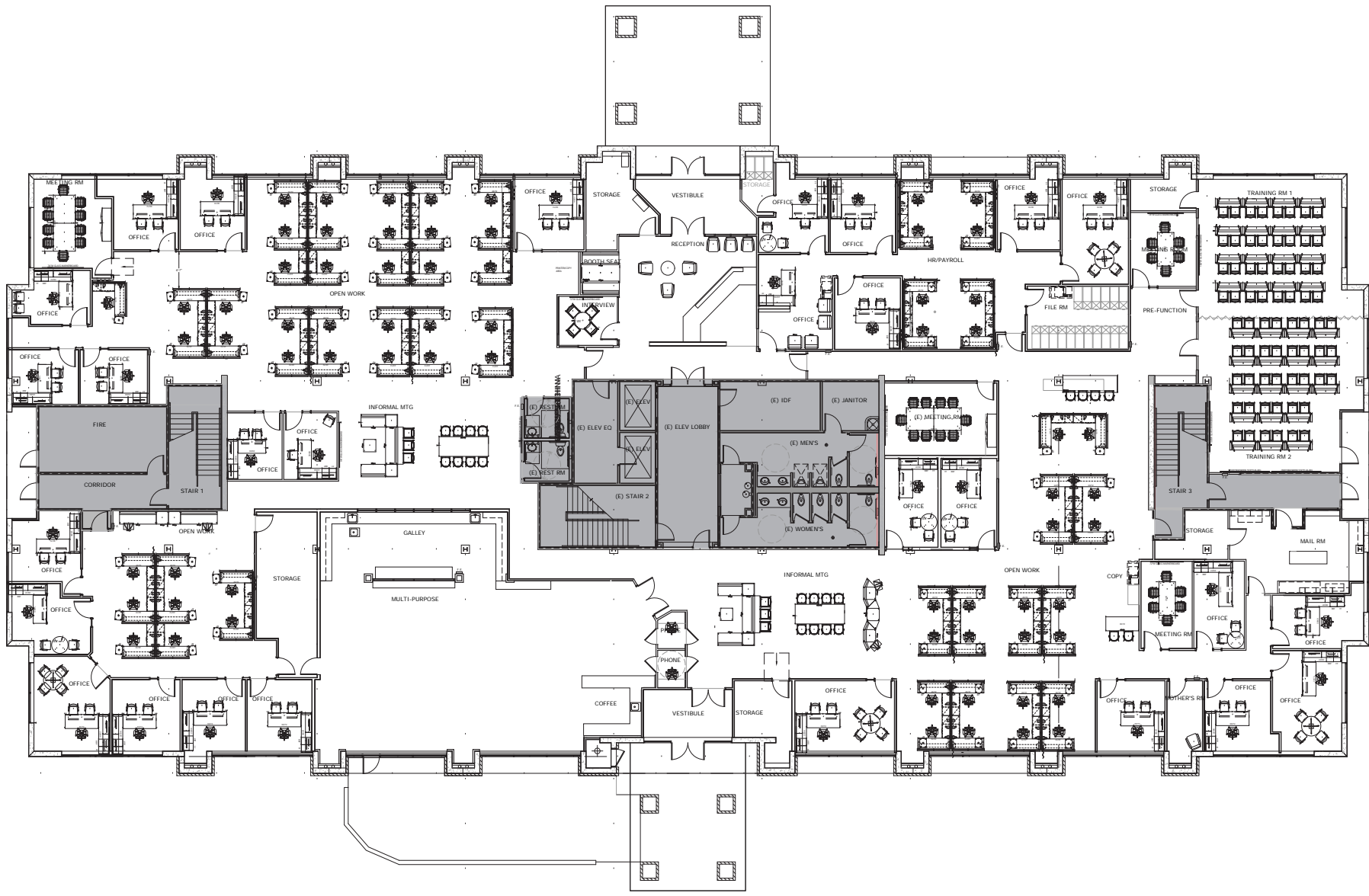
The property is available for sublease through May 31, 2027. The building can be demised to one or two floors. Furniture, fixtures and equipment is negotiable.



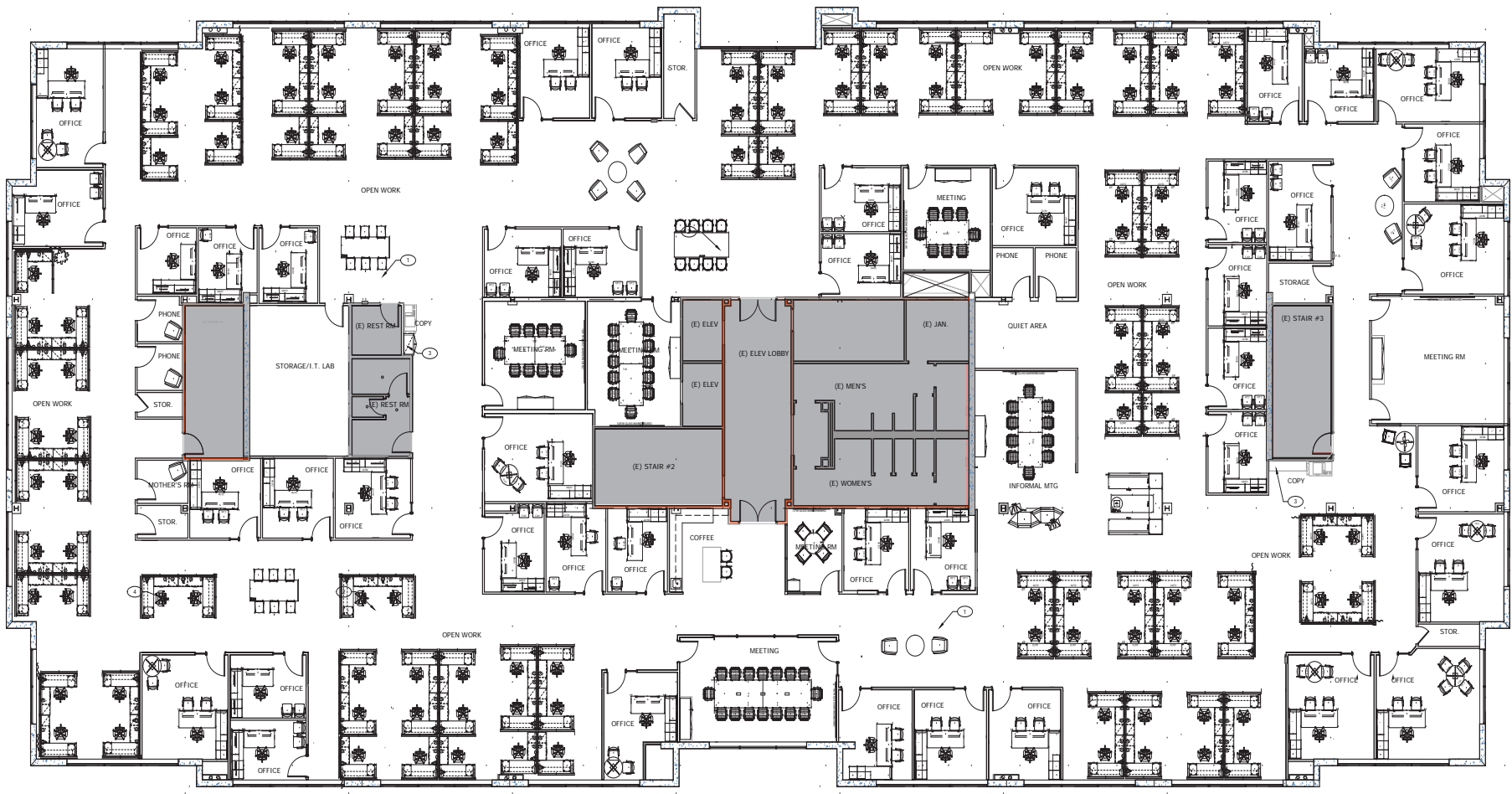
# 10375

PROFESSIONAL CIRCLE, RENO NV 89521

# FIRST FLOOR



# SECOND FLOOR

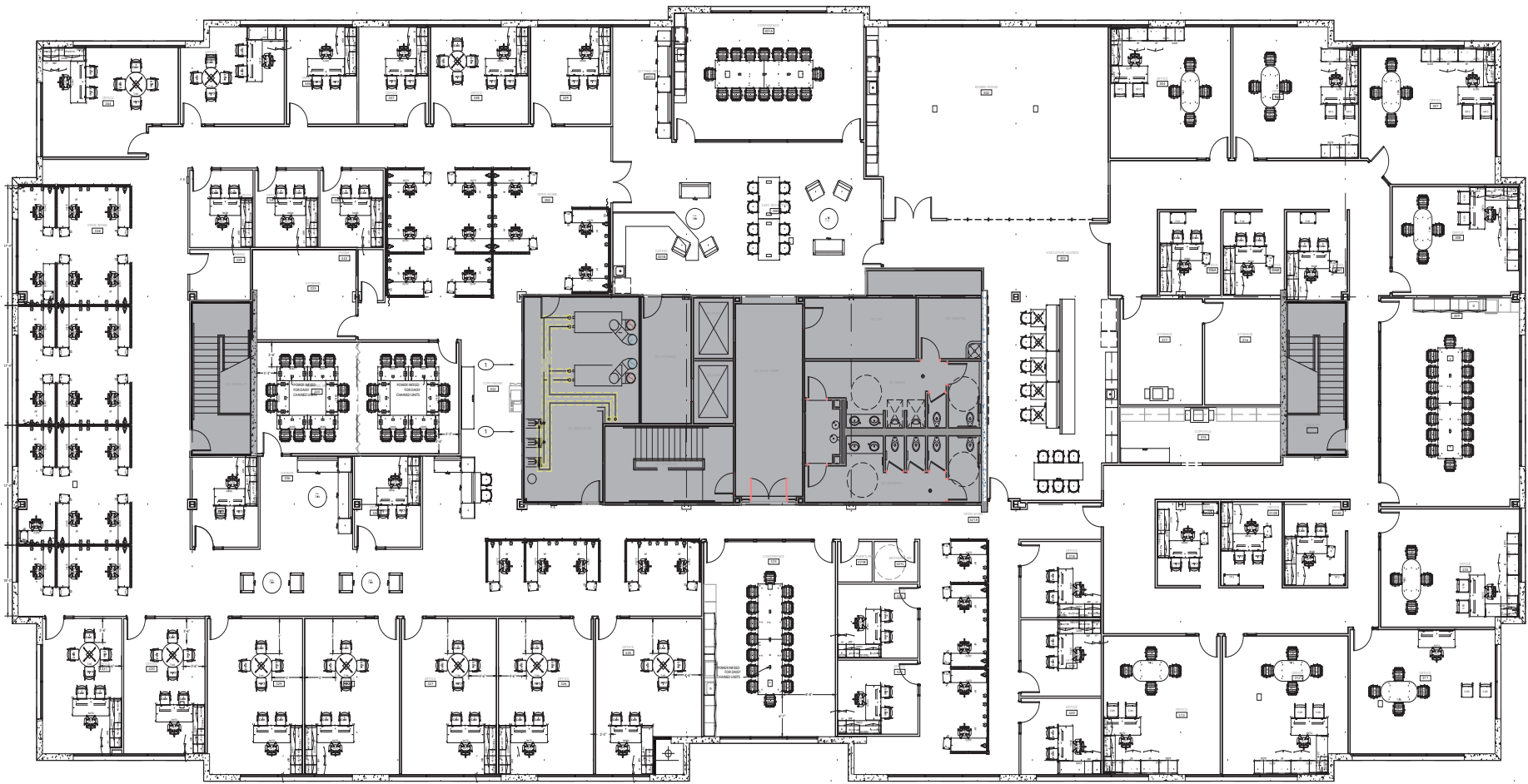


Floor Plans

# 10375

PROFESSIONAL CIRCLE, RENO NV 89521

THIRD FLOOR



Floor Plans

10375

PROFESSIONAL CIRCLE, RENO NV 89521



Interior Photos

10375

PROFESSIONAL CIRCLE, RENO NV 89521



Interior Photos

10375

PROFESSIONAL CIRCLE, RENO NV 89521



**10375**  
PROFESSIONAL CIRCLE, RENO NV 89521

Double R Blvd

Damonte Ranch Pkwy



Property Aerial

**10375**

PROFESSIONAL CIRCLE, RENO NV 89521



# 10375

PROFESSIONAL CIRCLE, RENO NV 89521

**Matt Grimes**

First Vice President  
+1 775 356 6290  
matt.grimes@cbre.com  
Lic. S.0072644.LLC  
www.cbre.us/matt.grimes  
www.cbre.us/reno

**David Woods, CCIM**

First Vice President  
+1 775 321 4459  
david.woods@cbre.com  
Lic S.0072655.LLC.  
www.cbre.us/david.woods  
www.cbre.us/reno

**Leahna Chapman**

Associate  
+1 775 823 6937  
leahna.chapman@cbre.com  
Lic S.0183267.LLC.  
www.cbre.us/leahna.chapman  
www.cbre.us/reno

© 2022 CBRE, Inc. All rights reserved. This information has been obtained from sources believed reliable, but has not been verified for accuracy or completeness. You should conduct a careful, independent investigation of the property and verify all information. Any reliance on this information is solely at your own risk. CBRE and the CBRE logo are service marks of CBRE, Inc. All other marks displayed on this document are the property of their respective owners, and the use of such logos does not imply any affiliation with or endorsement of CBRE. Photos herein are the property of their respective owners. Use of these images without the express written consent of the owner is prohibited.PMStudio\_January2022

**CBRE**