

CESAR CHAVEZ / ST. LOUIS PRIME RETAIL/OFFICE

2109-2111 Cesar Chavez Ave., Los Angeles, CA 90033



LEASING AGENTS:

ASHER PERGAMENT (818) 626-5770

asher@illicre.com · DRE#01922775

SEAN MARTIN (818) 697-9383

sean@illicre.com · DRE#01068450



17547 Ventura Blvd., Ste. 304 · Encino CA 91316 · 818.501.2212/Phone · 818.501.2202/Fax · www.illicre.com · DRE #01834124

This information has been secured from sources we believe to be reliable, but we make no representations or warranties, expressed or implied, as to the accuracy of the information. References to square footage are approximate. References to neighboring retailers are subject to change, and may not be adjacent to the vacancy being marketed either prior to, during, or after leases are signed. Lessee must verify the information and bears all risk for any inaccuracies.

CESAR CHAVEZ / ST. LOUIS PRIME RETAIL/OFFICE

2109-2111 Cesar Chavez Ave., Los Angeles, CA 90033

PROPERTY FEATURES

- Prime Storefront opportunity to lease 22,050 SF
- South of the corner of Cesar Chavez Ave and St. Louis
- Office or Retail use
- 44 Parking spaces

AREA AMENITIES

- Boyle Heights main shopping and retail location
- Abundant housing
- New apartment developments
- Metro Gold Line
- Vibrant community with disposable income
- Very densely populated



DEMOS	1 mile	3 mile	5 mile
Population	49,989	305,805	1,012,398
Avg. HH Income	\$50,546	\$68,113	\$67,277
Daytime Pop.	38,847	245,444	806,569
Traffic Count	± 30,917 cars per day		

LEASING AGENTS:

ASHER PERGAMENT (818) 626-5770

asher@illicre.com · DRE#01922775

SEAN MARTIN (818) 697-9383

sean@illicre.com · DRE#01068450



17547 Ventura Blvd., Ste. 304 · Encino CA 91316 · 818.501.2212/Phone · 818.501.2202/Fax · www.illicre.com · DRE #01834124

This information has been secured from sources we believe to be reliable, but we make no representations or warranties, expressed or implied, as to the accuracy of the information. References to square footage are approximate. References to neighboring retailers are subject to change, and may not be adjacent to the vacancy being marketed either prior to, during, or after leases are signed. Lessee must verify the information and bears all risk for any inaccuracies.

CESAR CHAVEZ / ST. LOUIS PRIME RETAIL/OFFICE

2109-2111 Cesar Chavez Ave., Los Angeles, CA 90033



LEASING AGENTS:

ASHER PERGAMENT (818) 626-5770

asher@illicre.com · DRE#01922775

SEAN MARTIN (818) 697-9383

sean@illicre.com · DRE#01068450

17547 Ventura Blvd., Ste. 304 · Encino CA 91316 · 818.501.2212/Phone · 818.501.2202/Fax · www.illicre.com · DRE #01834124

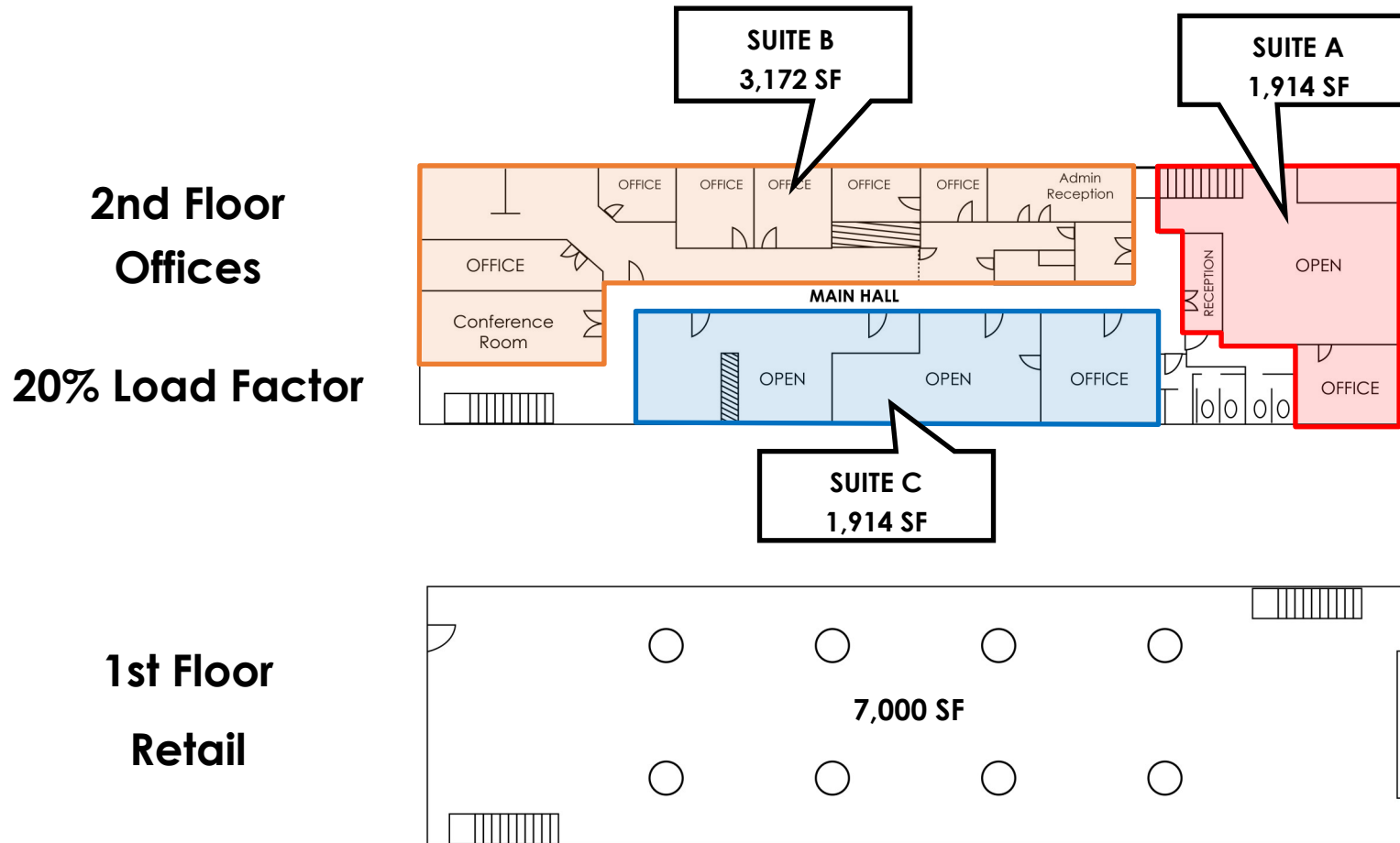
This information has been secured from sources we believe to be reliable, but we make no representations or warranties, expressed or implied, as to the accuracy of the information. References to square footage are approximate. References to neighboring retailers are subject to change, and may not be adjacent to the vacancy being marketed either prior to, during, or after leases are signed. Lessee must verify the information and bears all risk for any inaccuracies.



CESAR CHAVEZ / ST. LOUIS PRIME RETAIL/OFFICE

2109-2111 Cesar Chavez Ave., Los Angeles, CA 90033

ENTIRE FLOOR PLAN



LEASING AGENTS:

ASHER PERGAMENT (818) 626-5770

asher@illicre.com · DRE#01922775

SEAN MARTIN (818) 697-9383

sean@illicre.com · DRE#01068450



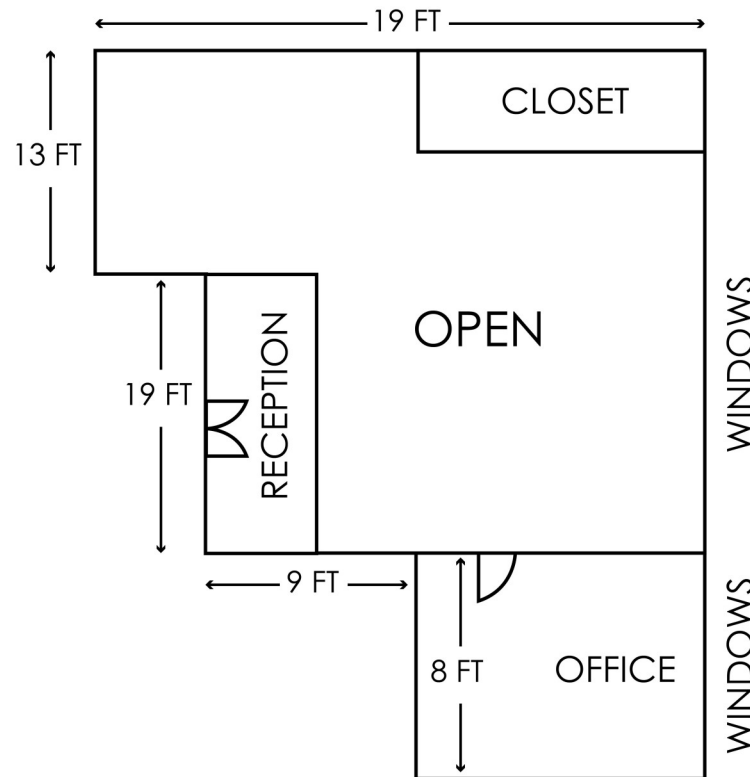
17547 Ventura Blvd., Ste. 304 · Encino CA 91316 · 818.501.2212/Phone · 818.501.2202/Fax · www.illicre.com · DRE #01834124

This information has been secured from sources we believe to be reliable, but we make no representations or warranties, expressed or implied, as to the accuracy of the information. References to square footage are approximate. References to neighboring retailers are subject to change, and may not be adjacent to the vacancy being marketed either prior to, during, or after leases are signed. Lessee must verify the information and bears all risk for any inaccuracies.

CESAR CHAVEZ / ST. LOUIS PRIME RETAIL/OFFICE

2109-2111 Cesar Chavez Ave., Los Angeles, CA 90033

SUITE A 1,914 SF



LEASING AGENTS:

ASHER PERGAMENT (818) 626-5770

asher@illicre.com · DRE#01922775

SEAN MARTIN (818) 697-9383

sean@illicre.com · DRE#01068450



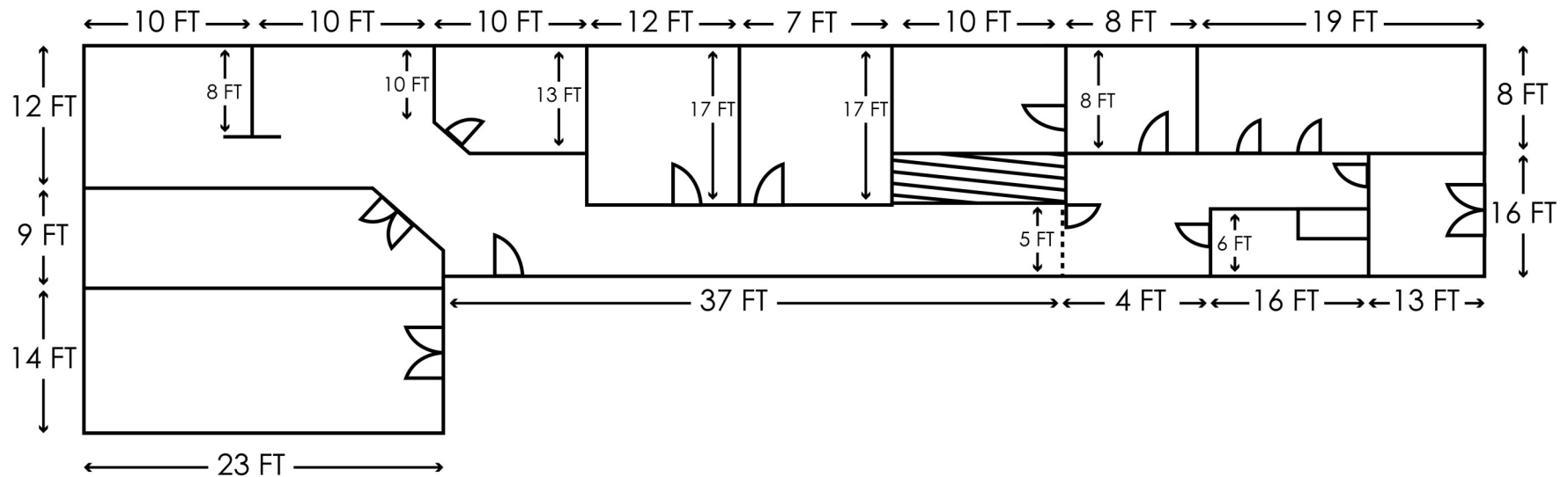
17547 Ventura Blvd., Ste. 304 · Encino CA 91316 · 818.501.2212/Phone · 818.501.2202/Fax · www.illicre.com · DRE #01834124

This information has been secured from sources we believe to be reliable, but we make no representations or warranties, expressed or implied, as to the accuracy of the information. References to square footage are approximate. References to neighboring retailers are subject to change, and may not be adjacent to the vacancy being marketed either prior to, during, or after leases are signed. Lessee must verify the information and bears all risk for any inaccuracies.

CESAR CHAVEZ / ST. LOUIS PRIME RETAIL/OFFICE

2109-2111 Cesar Chavez Ave., Los Angeles, CA 90033

SUITE B 3,172 SF



LEASING AGENTS:

ASHER PERGAMENT (818) 626-5770

asher@illicre.com · DRE#01922775

SEAN MARTIN (818) 697-9383

sean@illicre.com · DRE#01068450



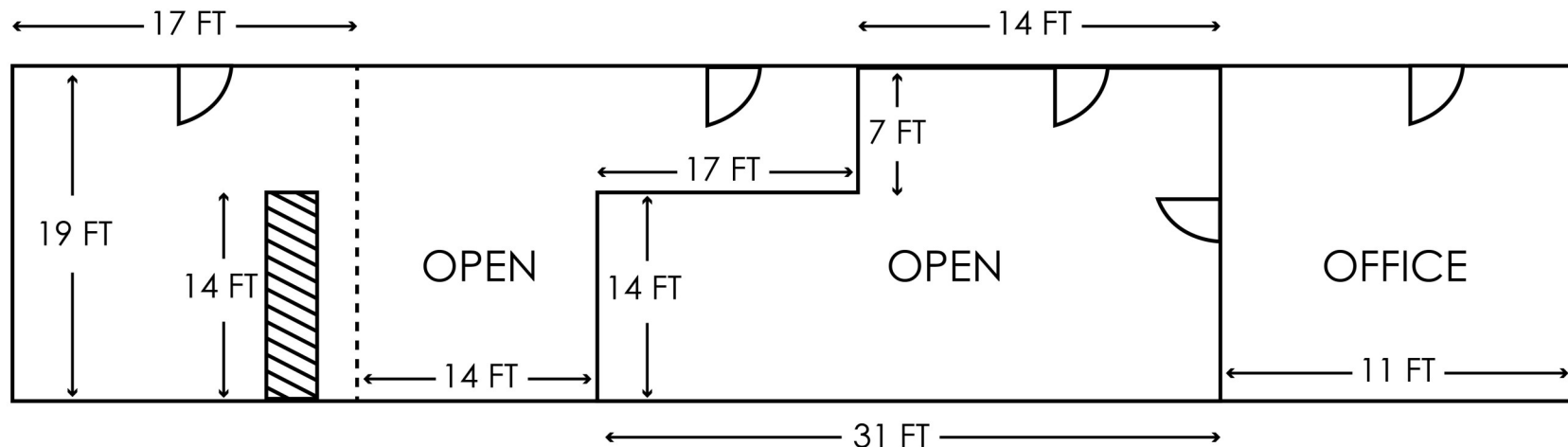
17547 Ventura Blvd., Ste. 304 · Encino CA 91316 · 818.501.2212/Phone · 818.501.2202/Fax · www.illicre.com · DRE #01834124

This information has been secured from sources we believe to be reliable, but we make no representations or warranties, expressed or implied, as to the accuracy of the information. References to square footage are approximate. References to neighboring retailers are subject to change, and may not be adjacent to the vacancy being marketed either prior to, during, or after leases are signed. Lessee must verify the information and bears all risk for any inaccuracies.

CESAR CHAVEZ / ST. LOUIS PRIME RETAIL/OFFICE

2109-2111 Cesar Chavez Ave., Los Angeles, CA 90033

SUITE C 1,914 SF



LEASING AGENTS: **ASHER PERGAMENT (818) 626-5770**
asher@illicre.com · DRE#01922775

SEAN MARTIN (818) 697-9383
sean@illicre.com · DRE#01068450



17547 Ventura Blvd., Ste. 304 · Encino CA 91316 · 818.501.2212/Phone · 818.501.2202/Fax · www.illicre.com · DRE #01834124

This information has been secured from sources we believe to be reliable, but we make no representations or warranties, expressed or implied, as to the accuracy of the information. References to square footage are approximate. References to neighboring retailers are subject to change, and may not be adjacent to the vacancy being marketed either prior to, during, or after leases are signed. Lessee must verify the information and bears all risk for any inaccuracies.

CESAR CHAVEZ / ST. LOUIS PRIME RETAIL/OFFICE

2109-2111 Cesar Chavez Ave., Los Angeles, CA 90033



LEASING AGENTS:

ASHER PERGAMENT (818) 626-5770

asher@illicre.com · DRE#01922775

SEAN MARTIN (818) 697-9383

sean@illicre.com · DRE#01068450



17547 Ventura Blvd., Ste. 304 · Encino CA 91316 · 818.501.2212/Phone · 818.501.2202/Fax · www.illicre.com · DRE #01834124

This information has been secured from sources we believe to be reliable, but we make no representations or warranties, expressed or implied, as to the accuracy of the information. References to square footage are approximate. References to neighboring retailers are subject to change, and may not be adjacent to the vacancy being marketed either prior to, during, or after leases are signed. Lessee must verify the information and bears all risk for any inaccuracies.