

667 Lighthouse Ave.

Pacific Grove, CA 93950

FOR LEASE



Property Overview

Light and bright downtown office space overlooking a lively portion of Lighthouse Ave.

Spaces are serviced by an elevator and of course stairs. Nearby street parking is abundant. Spaces can be combined or separate.

Built out with reception, private offices and supply room and conference room .

Property Details

Building Size: 8,623 SF Year Built: 1985

Lot Size: 0.13 AC

SPACE	SIZE	RATE
3rd Fl, Ste 3-Z	222SF	\$1.50 SF
3rd Fl, Ste 3-C	230-425 SF	\$1.50 SF

Contact Information :

Anthony Davi, Jr.
Email: agjr@agdavi.com
Phone : (831)313-2299
CAL BRE #: 01036716

A.G. DAVI

REAL ESTATE & PROPERTY MANAGEMENT

www.MontereyCommercial.com

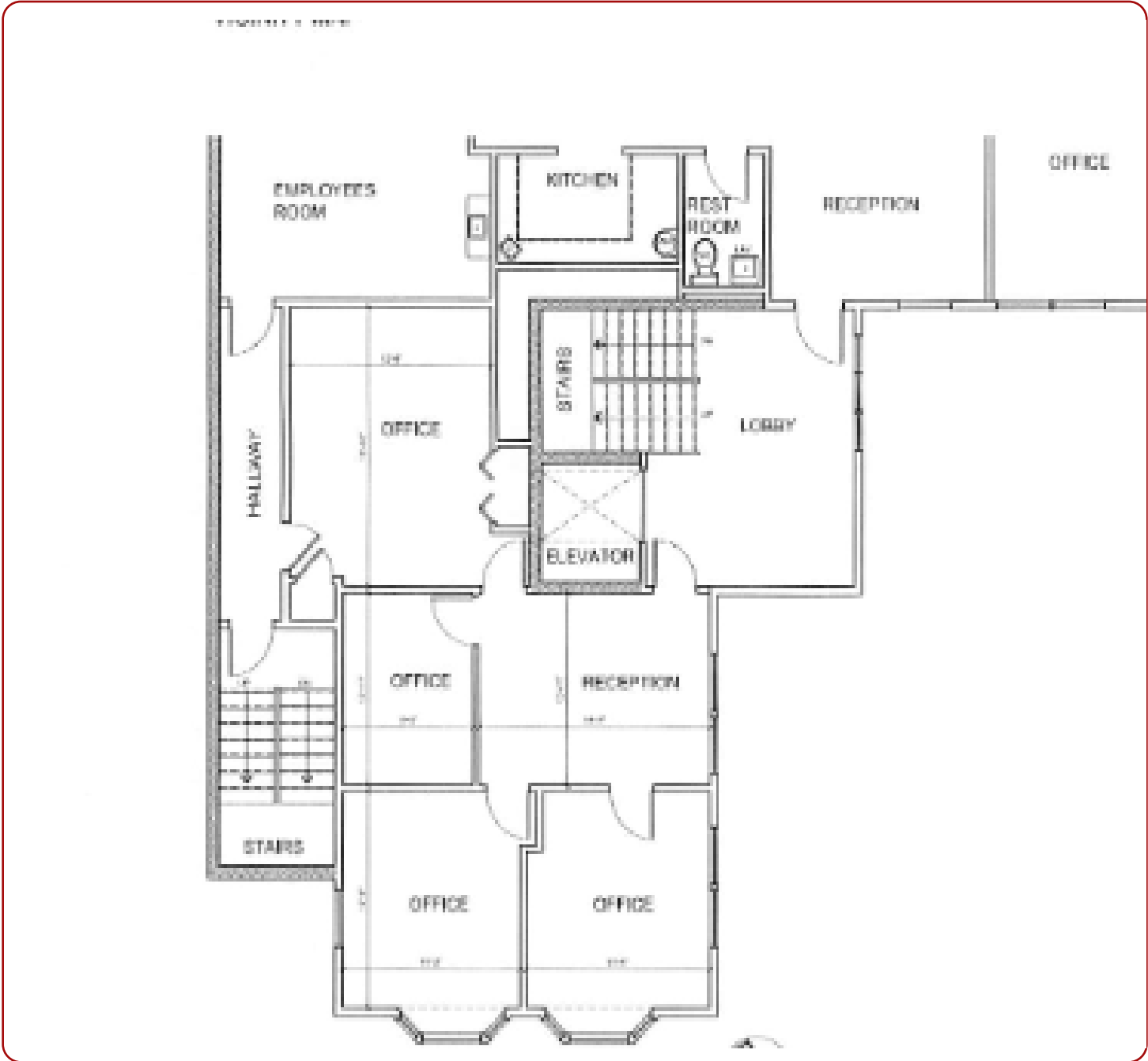
484 Washington Street Ste. D
Monterey, CA 93940

831-373-2222

667 Lighthouse Ave.

Pacific Grove, CA 93950

FOR LEASE



Contact Information :

Anthony Davi, Jr.
Email: agjr@agdavi.com
Phone : (831)313-2299
CAL BRE #: 01036716

A.G. DAVI
REAL ESTATE & PROPERTY MANAGEMENT

www.MontereyCommercial.com

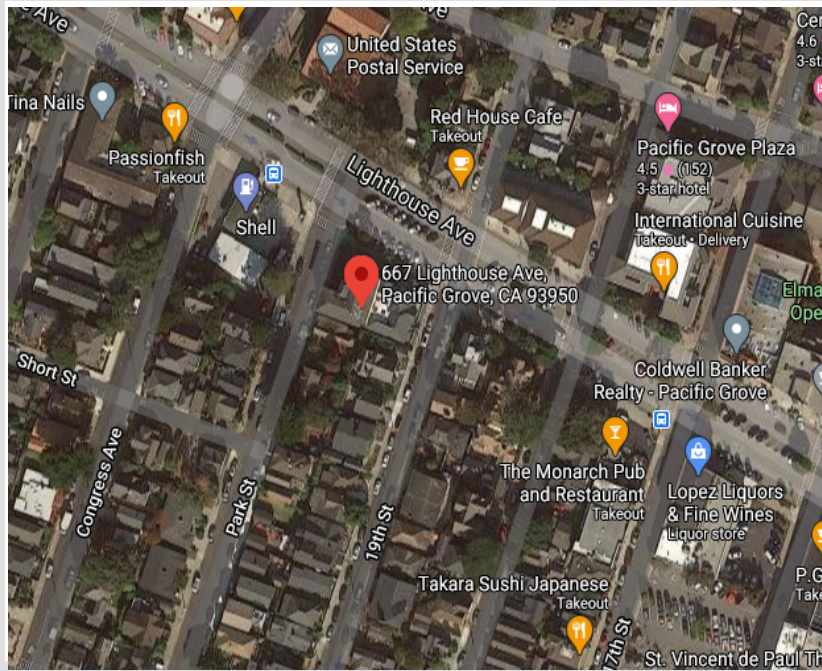
484 Washington Street Ste. D
Monterey, CA 93940

831-373-2222

667 Lighthouse Ave.

Pacific Grove, CA 93950

FOR LEASE



Contact Information :

Anthony Davi, Jr.
Email: agjr@agdavi.com
Phone : (831)313-2299
CAL BRE #: 01036716



www.MontereyCommercial.com

484 Washington Street Ste. D
Monterey, CA 93940
831-373-2222