

FOR SALE > LAND "MOTIVATED SELLER"



Two Parcels - 3.45 & 2.39 Acres

MARGRACE RD. & CHESTERFIELD CT., KINGS MOUNTAIN, NC 28086



Margrace Road & Chesterfield Court >

Two parcels situated on Margrace Road and Chesterfield Court in Kings Mountain, North Carolina available for sale. Currently zoned R-10 both with a sewer easement with the adjacent property.

Street	Traffic Count
Margrace Road	4,600 VPD
S. Battleground Ave.	4,900 VPD

Site Summary >

- > Two Parcels:
 - > 3.45 Acres
 - > 2.39 Acres
- > Parcel IDs:
 - > 3.45 Acres - 51909
 - > 2.39 Acres - 51910
- > Corner of Margrace Rd. & Chesterfield Court
- > Sewer Easement with Adjacent Property
- > Zoned R-10
- > Asking Price \$49,000 (3.45 AC.)
- > Asking Price \$39,000 (2.39 AC.)



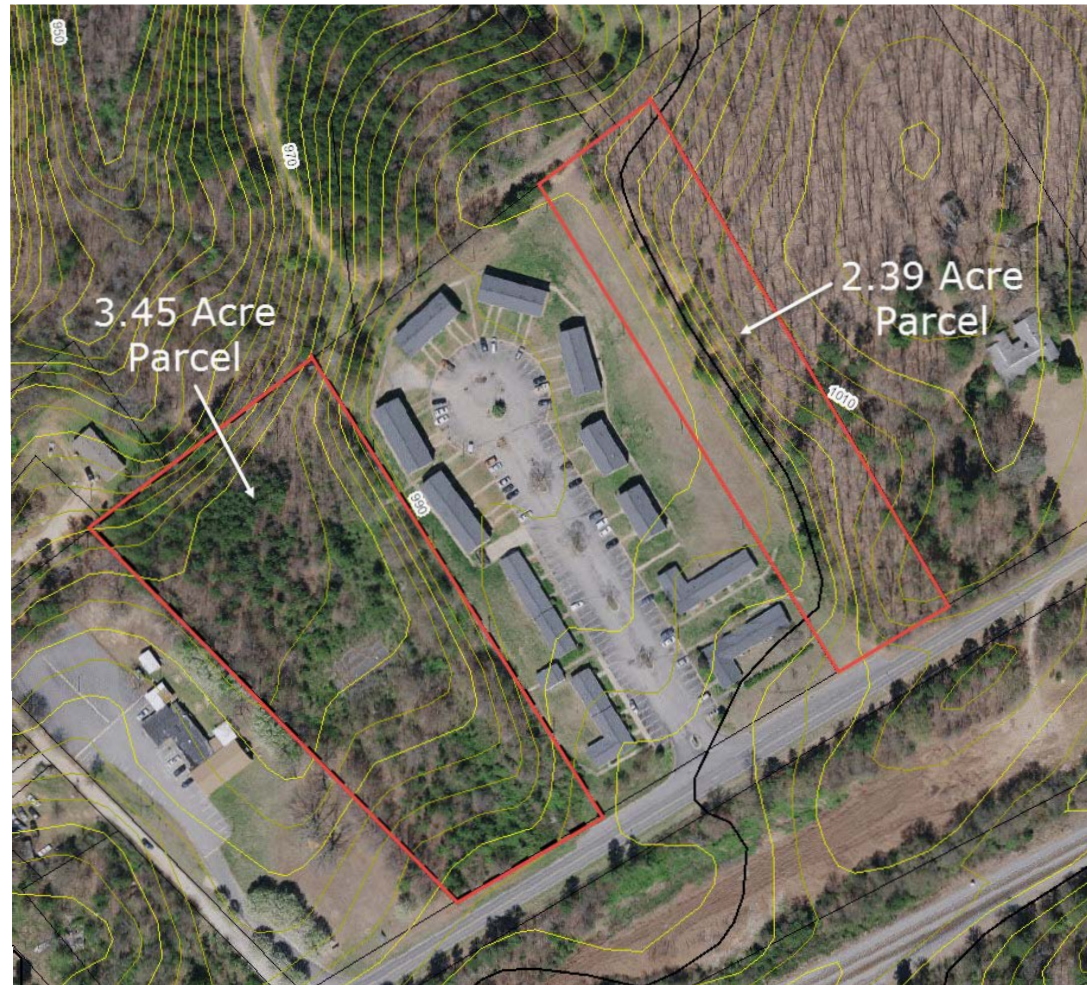
STEVE RICH, CCIM
+1 704 409 2375
CHARLOTTE, NC
STEVE.RICH@COLLIERS.COM

COLLIERS INTERNATIONAL
301 S. College St, Suite 3350
Charlotte, NC 28202
www.colliers.com

FOR SALE > LAND

Two Parcels - 3.45 & 2.39 Acres

MARGRACE RD. & CHESTERFIELD CT., KINGS MOUNTAIN, NC 28086



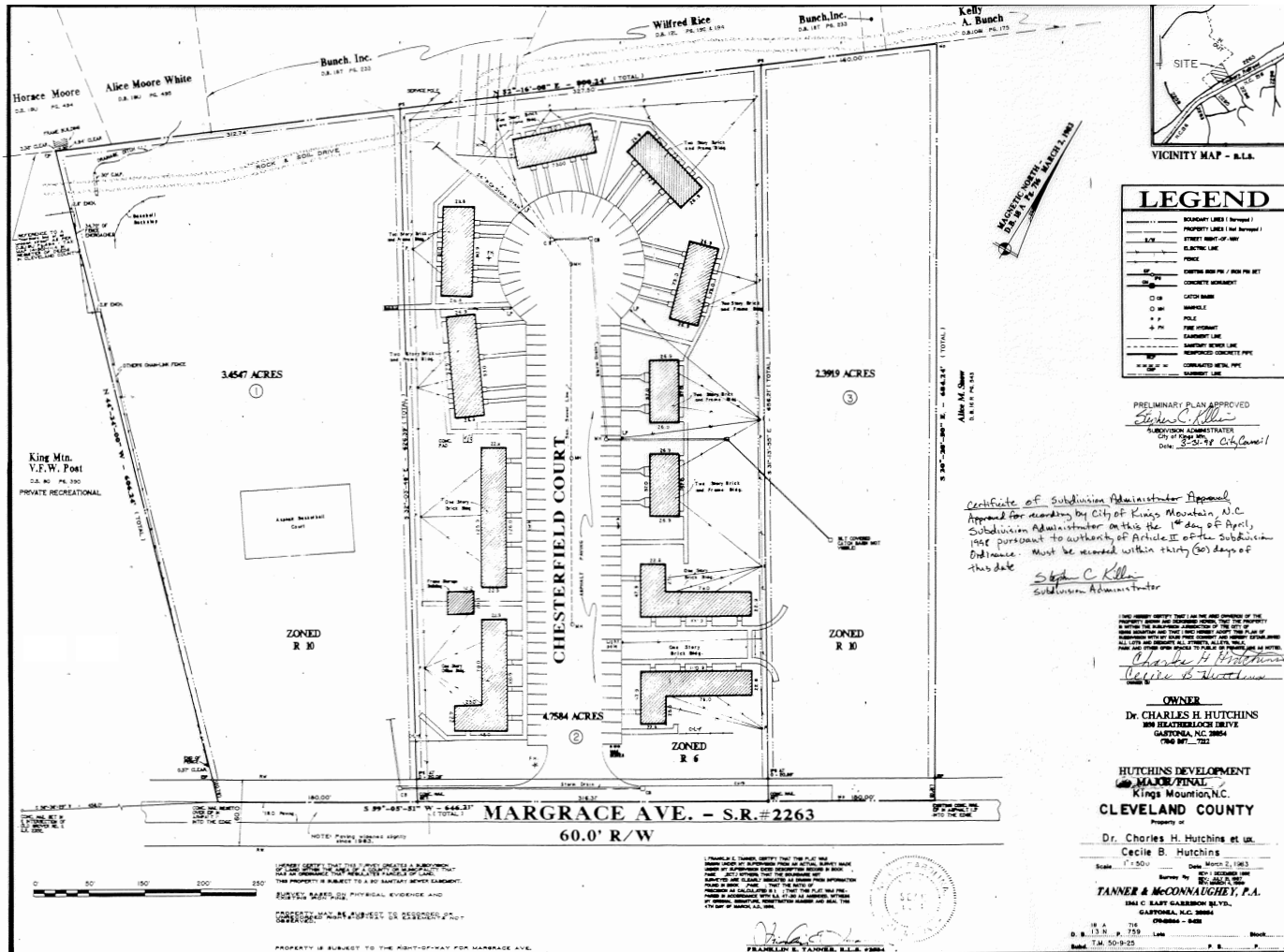
STEVE RICH, CCIM
+1 704 409 2375
CHARLOTTE, NC
STEVE.RICH@COLLIERS.COM

COLLIERS INTERNATIONAL
301 S. College St, Suite 3350
Charlotte, NC 28202
www.colliers.com

FOR SALE > LAND

Two Parcels - 3.45 & 2.39 Acres

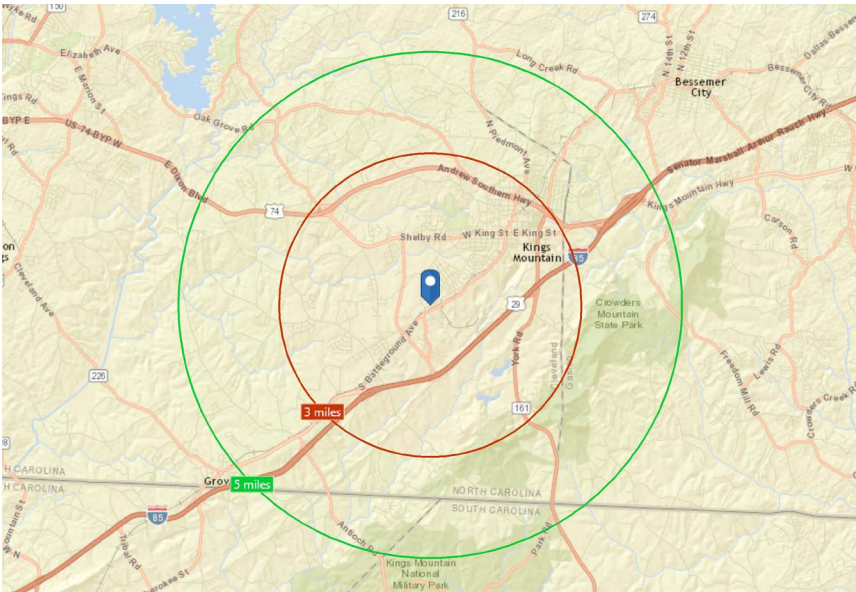
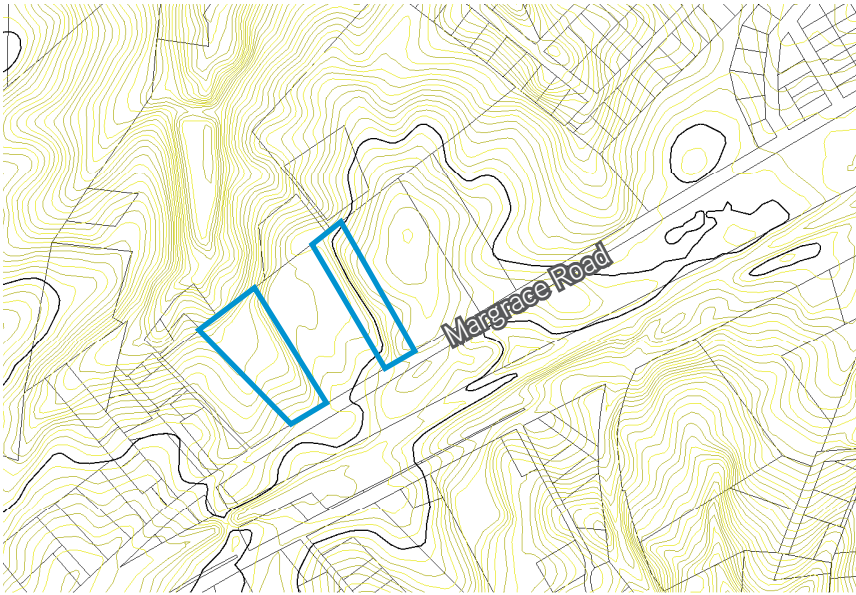
MARGRACE RD. & CHESTERFIELD CT., KINGS MOUNTAIN, NC 28086



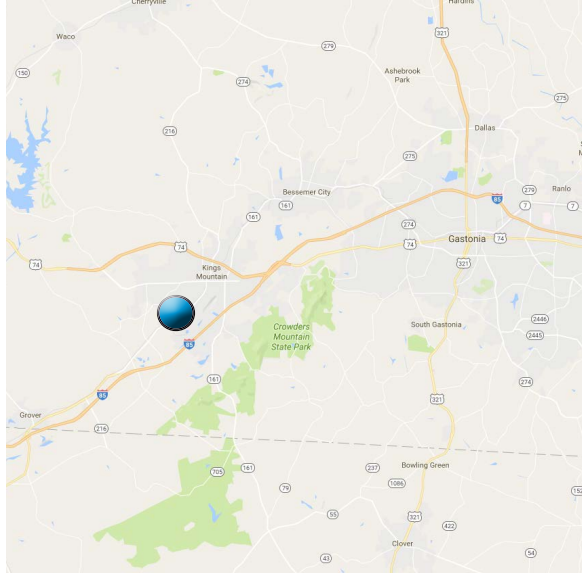
STEVE RICH, CCIM
+1 704 409 2375
CHARLOTTE, NC
STEVE.RICH@COLLIERS.COM

COLLIERS INTERNATIONAL
301 S. College St, Suite 3350
Charlotte, NC 28202
www.colliers.com

Margrace Road & Chesterfield Court >



Demographics	3 Mile Radius	5 Mile Radius
2015 Population	12,642	23,644
Avg. HH Income	\$53,033	\$78,426
Employees	6,245	8,705



Contact Us

STEVE RICH, CCIM
 +1 704 409 2375
 CHARLOTTE, NC
STEVE.RICH@COLLIERS.COM

COLLIERS INTERNATIONAL
 301 S. College St, Suite 3350
 Charlotte, NC 28202
www.colliers.com

The information contained herein has either been given to us by the owner of the property or has been obtained from sources that we deem reliable. We have no reason to doubt its accuracy, but we do not guarantee it. This property is subject to prior sale, lease, price change or withdrawal without notice. Note: Broker participation is welcomed. Compensation is offered to buyer/tenant agent.

