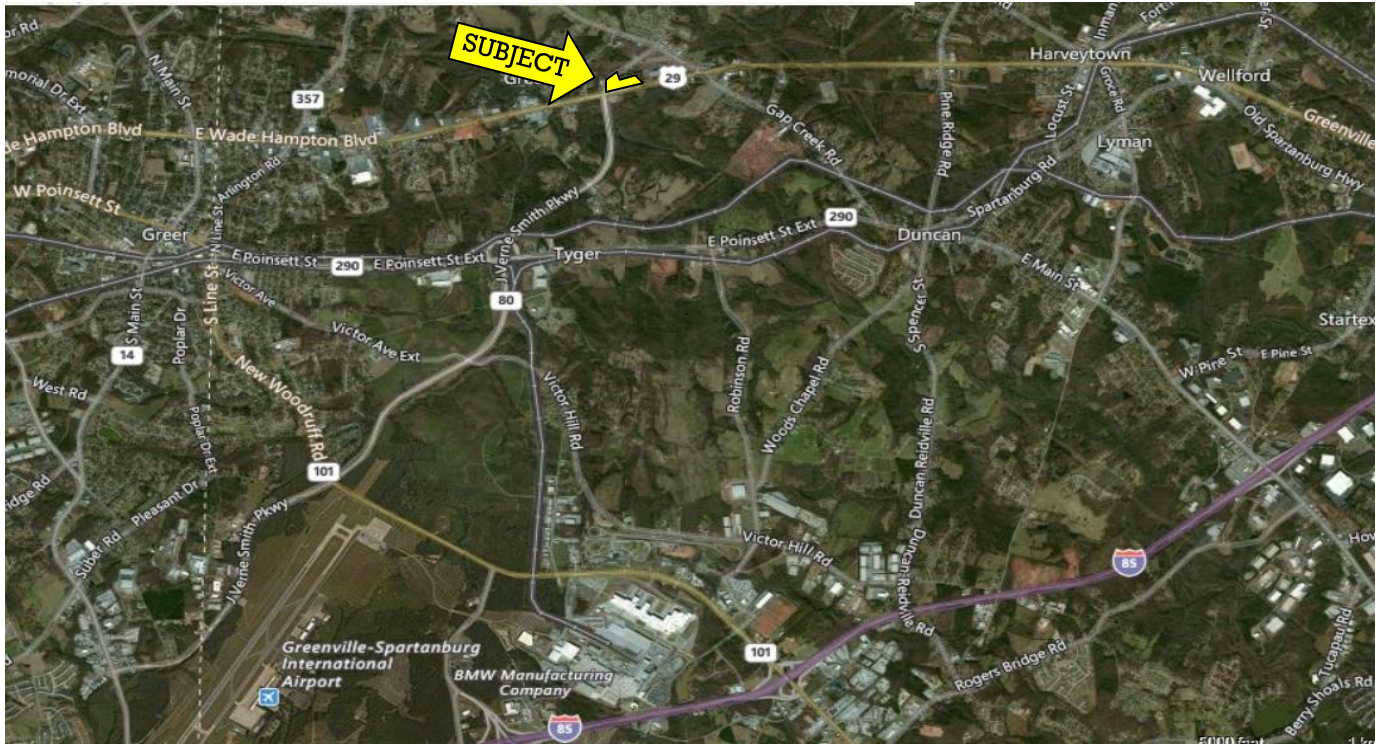


AVAILABLE

E. Wade Hampton Blvd. @ intersection of
J. Verne Smith Pkwy & Gary Armstrong Road
Greer, SC 29651

Commercial
Sales
Leasing &
Investment



- 12.03± acres located on Wade Hampton Boulevard.
- 13150, 13180, & 13190 E. Wade Hampton Boulevard, Greer, SC
- Subdividable
- Will sell whole or part
- Great location for automotive dealership, grocery store, or mixed-use development
- High visibility and exposure on E. Wade Hampton Blvd.
- Spartanburg County Tax Map #s 5-14-00-102.00; 5-14-00-102.01; 5-14-00-102.03

Call for Pricing



No warranty or representation, expressed or implied, is made to the accuracy of the information contained herein, and the same is submitted subject to errors, omissions, change of price, rental or other conditions, imposed by the principles.

DALE SEAY

380 S. Pine Street

Spartanburg, SC 29302

Tel 864.583.1001 C 864.590.7658

Fax 864.585.6188

daleseay@spencerhines.com

www.spencerhines.com

CoStar
POWERBROKER
2015 Top Broker Award