



COMMERCE 429

LOGISTICS PARK

SCAN
FOR MORE
INFORMATION



1290 Ocoee-Apopka Rd
Ocoee, FL 32218

AVAILABLE IMMEDIATELY
194,678 SF



CBRE

Contact Us:

David Murphy
Vice Chairman
+1 407 404 5020
david.murphy@cbre.com

Monica Wonus
Executive Vice President
+1 407 404 5042
monica.wonus@cbre.com

Gaby Gissy
Associate
+1 407 404 5012
gaby.gissy@cbre.com

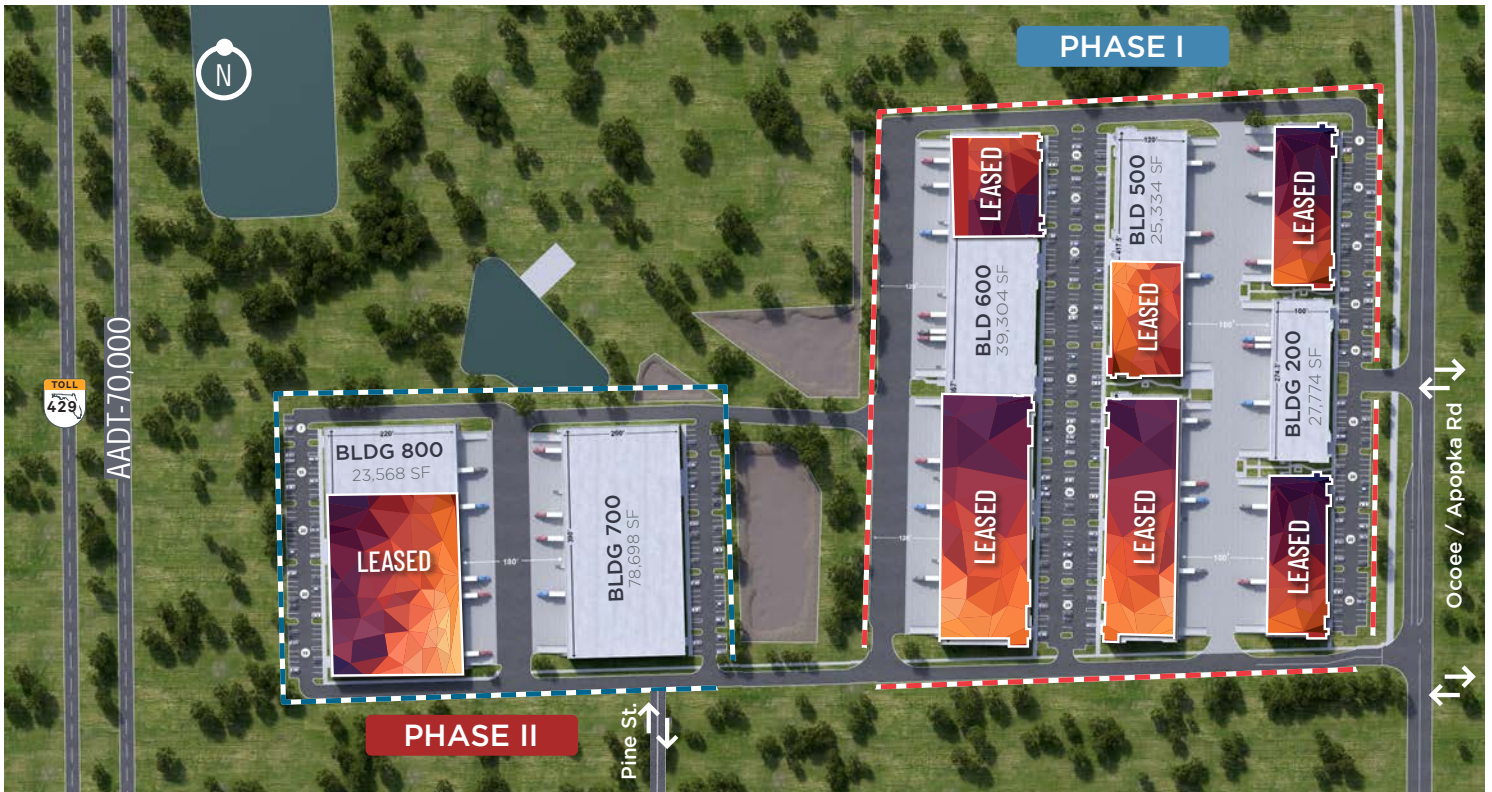
Sharif Baker
Associate
+1 407 404 5018
sharif.baker@cbre.com

PROPERTY OVERVIEW



Commerce 429 is your future-proof decision, convenient to Orlando's Beltway and Florida's Turnpike, and offers a host of purposeful design features.

This park provides a significant advantage with small to medium sized buildings, thus offering a wide variety of configurations.



NOW AVAILABLE!



12,750 - 194,678 SF
AVAILABLE



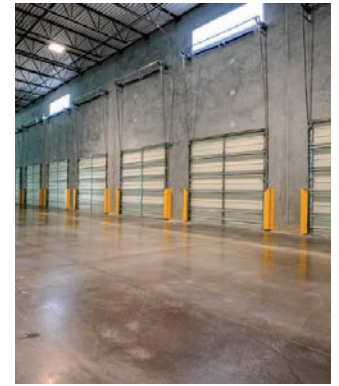
IMMEDIATE ACCESS
TO 429



28' - 32'
CLEAR HEIGHT



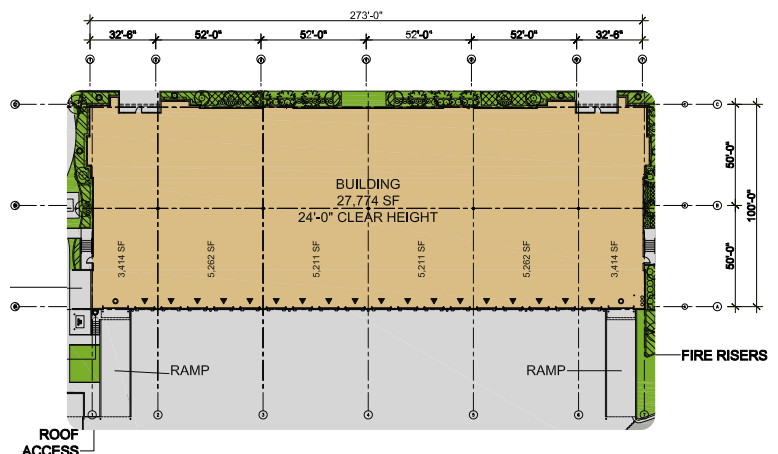
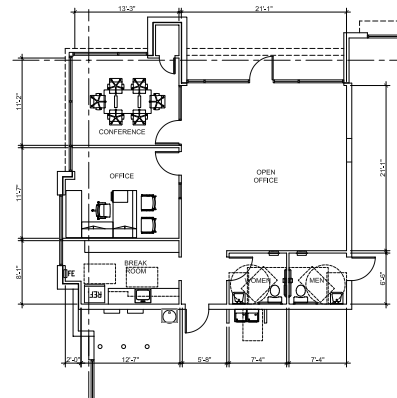
AMPLE
EMPLOYEE PARKING



Building 200: 27,774 SF

1100 Ocoee Apopka Road

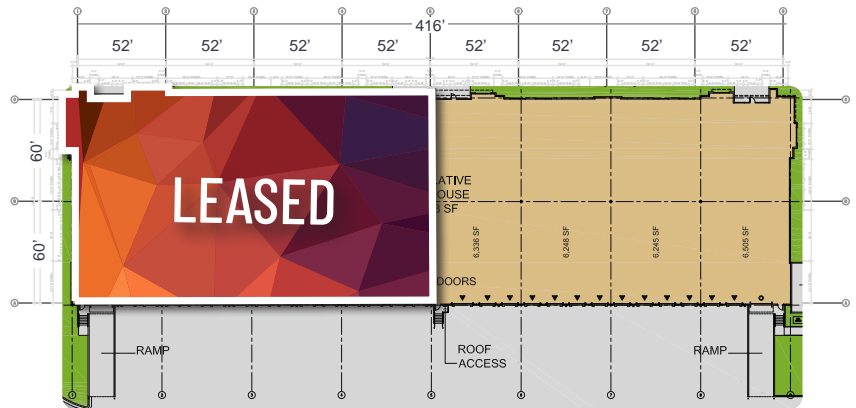
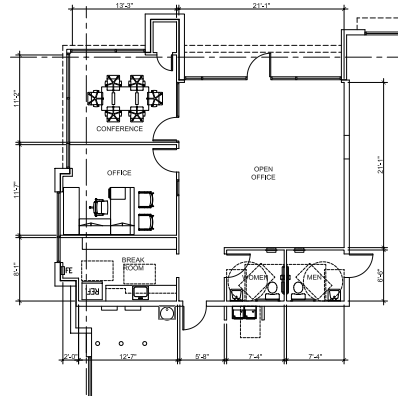
BUILDING 200	
Total SF	27,774 SF
Office SF	1,107 SF
Clear Height	24'
Building Depth	100'
Column Space	52' x 50'
Dock Doors	18
Drive-In Doors	2
Truck Court	150' (Shared)
Parking	54 (1.94/1,000 SF)
Sprinklers	ESFR
Lighting	LED (Motion)
Power	1,200 amp main service at 277/480v
Fiber	AT&T



Building 500: 12,750 - 25,334 SF

453 Prosperity Farm Road

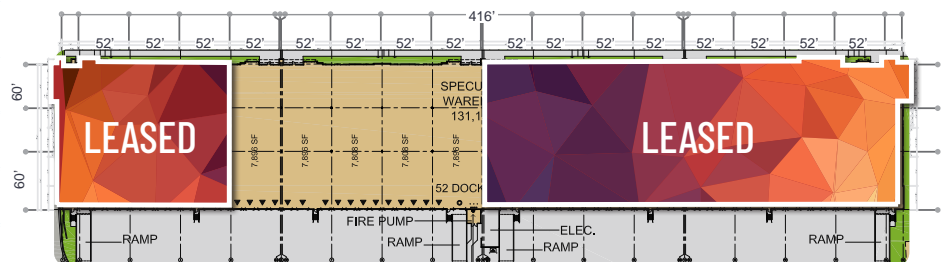
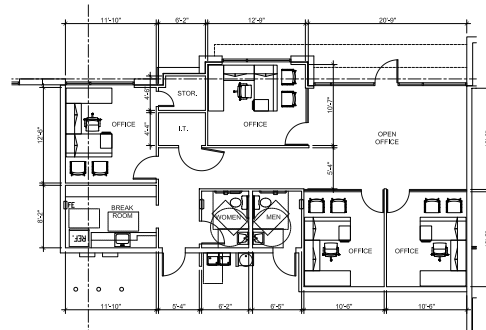
BUILDING 500	
Total SF	25,334 SF
Office SF	1,107 SF
Clear Height	28'
Building Depth	120'
Column Space	52' x 60'
Dock Doors	27
Drive-In Doors	2
Truck Court	150' (Shared)
Parking	40 Spaces
Sprinklers	ESFR
Lighting	LED (Motion)
Power	1,200 amp main service at 277/480v
Fiber	AT&T



Building 600: 39,304 SF

475 Prosperity Farm Road

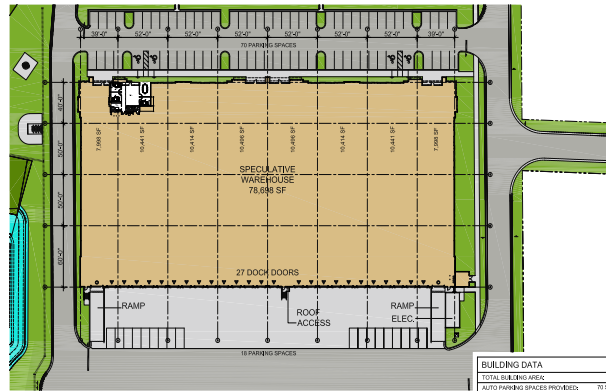
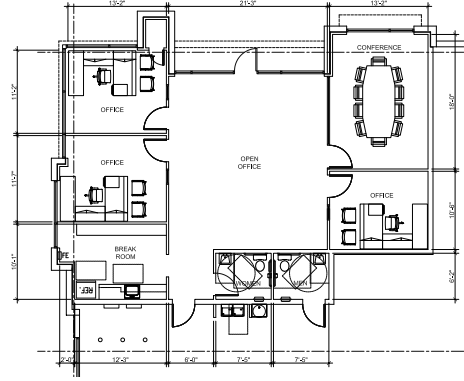
BUILDING 600	
Total SF	39,304 SF
Office SF	1,327 SF
Clear Height	32'
Building Depth	150'
Column Space	52' x 45'
Dock Doors	16
Drive-In Doors	1
Truck Court	120'
Parking	35 Spaces
Sprinklers	ESFR
Lighting	LED (Motion)
Power	1,600 amp remaining at 277/480v
Fiber	AT&T



Building 700: 18,439 - 78,698 SF

525 Prosperity Farm Road

BUILDING 700	
Total SF	78,698 SF
Office SF	1,626 SF
Clear Height	32'
Building Depth	200'
Column Space	52' x 50'
Dock Doors	25
Drive-In Doors	4
Truck Court	180'
Parking	70 Spaces
Sprinklers	ESFR
Lighting	LED (Motion)
Power	1,600 amp main service at 277/480v
Fiber	AT&T



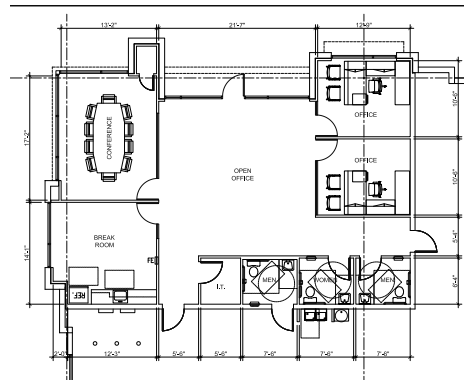
BUILDING DATA	
TOTAL BUILDING AREA	78,698 SF
AUTO PARKING SPACES PROVIDED	70 SPACES (240'X100')*
TRUCKHEAD DOOR DOORS PROVIDED	27 DOORS
DRIVE-IN DOORS PROVIDED	4 DOORS

FLOOR PLAN
32'-0" CLEAR HEIGHT

Building 800: 23,568 SF

537 Prosperity Farm Road

BUILDING 800	
Total SF	23,568 SF
Office SF	1,578 SF
Clear Height	32'
Building Depth	220'
Column Space	52' x 40'
Dock Doors	6
Drive-In Doors	1
Truck Court	180'
Parking	20 Spaces
Sprinklers	ESFR
Lighting	LED (Motion)
Power	400 amp 277/480v
Fiber	AT&T

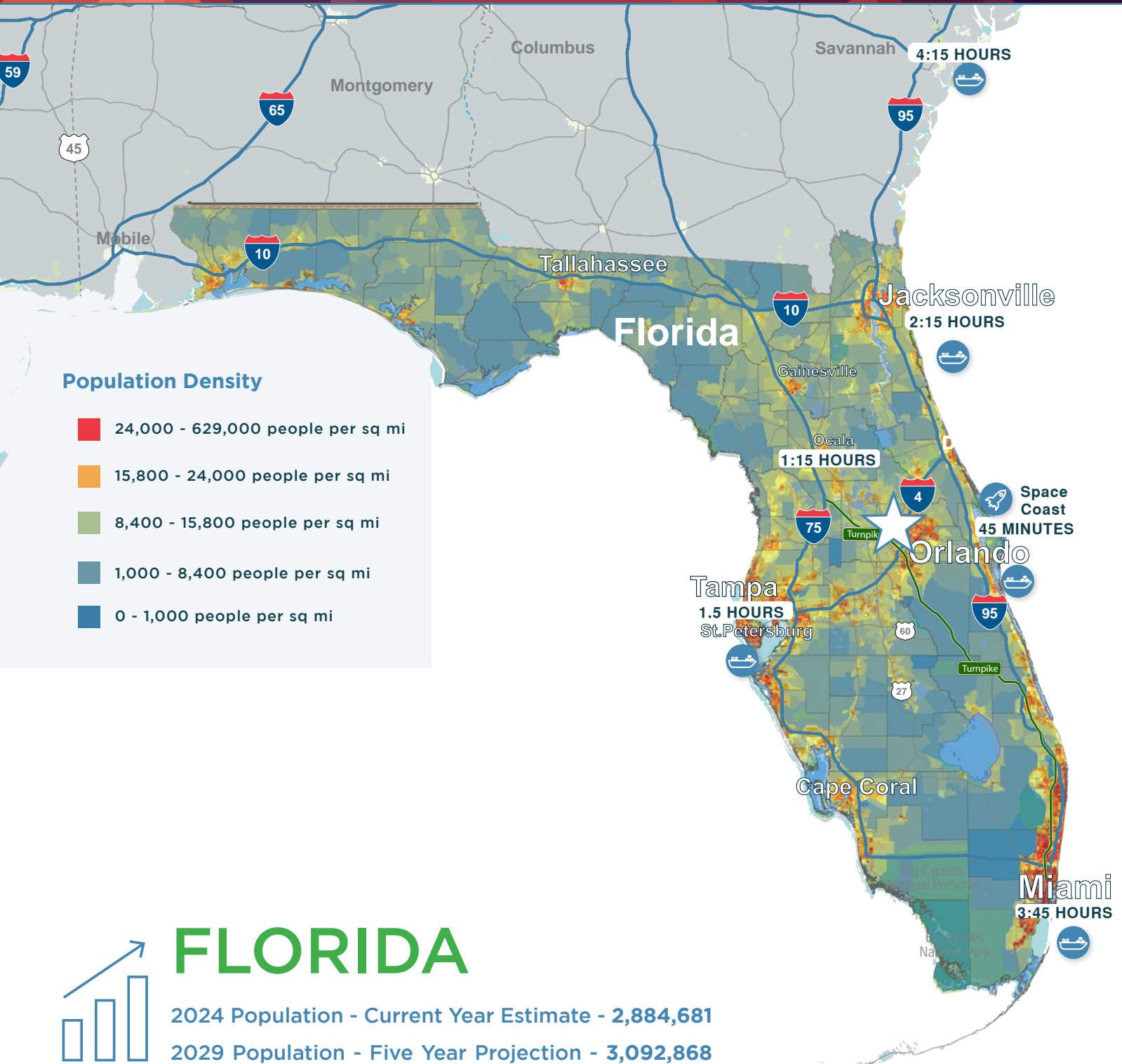


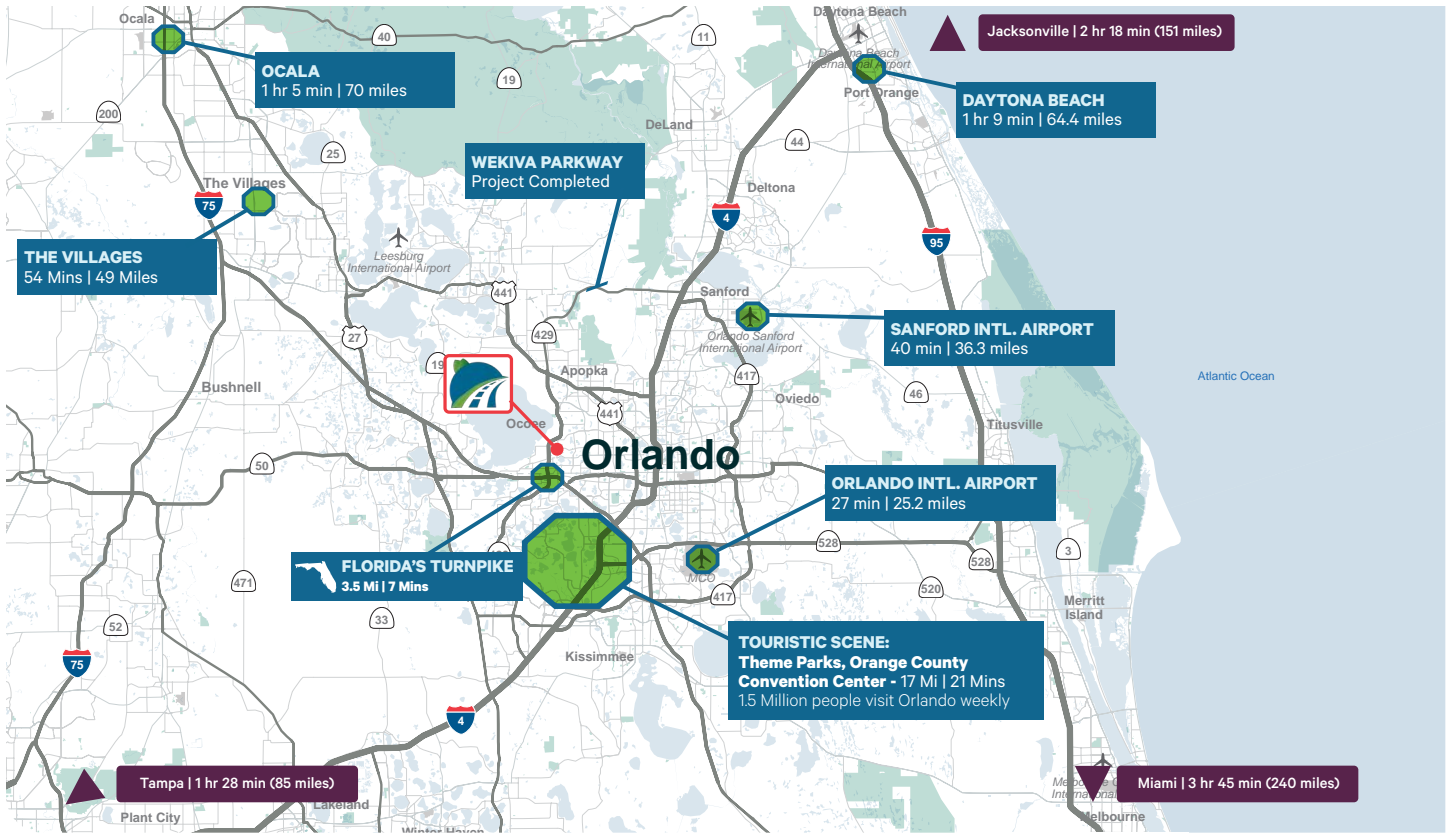
BUILDING DATA	
TOTAL BUILDING AREA	23,568 SF
AUTO PARKING SPACES PROVIDED	20 SPACES (240'X100')*
TRUCKHEAD DOOR DOORS PROVIDED	6 DOORS
DRIVE-IN DOORS PROVIDED	1 DOOR

FLOOR PLAN
32'-0" CLEAR HEIGHT

STRATEGIC LOCATION

With unparalleled connectivity to major routes—less than 5 miles from Florida’s Turnpike (via SR-429)—this is an ideal site for local and regional distribution.

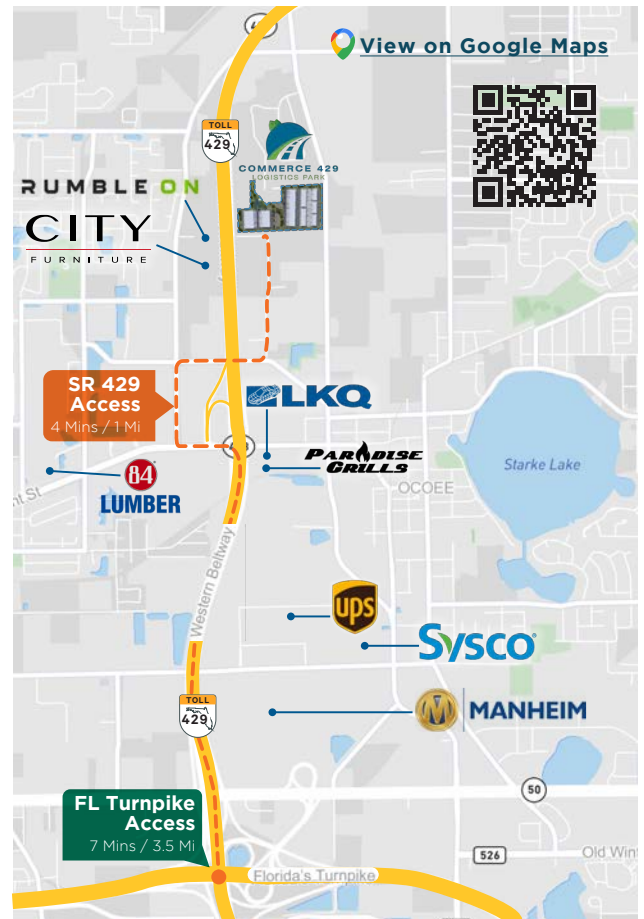




- ▶ Frontage directly on SR-429 and Ocoee-Apopka Road
- ▶ 3.5 miles (7 minutes) to Florida's Turnpike, the closest new construction
- ▶ 4 minutes to the SR-429 on-ramp
- ▶ 19 min (18.8 miles) to Walt Disney World
- ▶ 21 min (16.2 miles) to Universal Studios
- ▶ 18,831 Rooftops within 3 Miles

KEY DISTANCES

SR 429	1 Mi / 4 Mins
Florida Turnpike	3.5 Mi / 7 Mins
SR 408	6 Mi / 8 Mins
Interstate 4	12 Mi / 13 Mins
SR 528	16 Mi / 16 Min
Orlando Airport (MCO)	23.7 Mi / 24 Min





COMMERCE 429 LOGISTICS PARK

1290 Ocoee Apopka Rd | Ocoee, FL 32218



Contact Us:

David Murphy
Vice Chairman
+1 407 404 5020
david.murphy@cbre.com

Monica Wonus
Executive Vice President
+1 407 404 5042
monica.wonus@cbre.com

Gaby Gissy
Associate
+1 407 404 5012
gaby.gissy@cbre.com

Sharif Baker
Associate
+1 407 404 5018
sharif.baker@cbre.com

© 2026 CBRE, Inc. All rights reserved. This information has been obtained from sources believed reliable, but has not been verified for accuracy or completeness. You should conduct a careful, independent investigation of the property and verify all information. Any reliance on this information is solely at your own risk. CBRE and the CBRE logo are service marks of CBRE, Inc. All other marks displayed on this document are the property of their respective owners, and the use of such logos does not imply any affiliation with or endorsement of CBRE. Photos herein are the property of their respective owners. Use of these images without the express written consent of the owner is prohibited.



CBRE