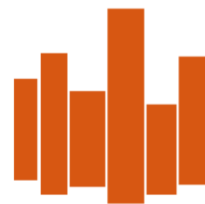


## The Troy Centre: Office Space For Lease

2095 West 6<sup>th</sup> Ave., Broomfield, CO 80020



### Property Highlights

- Building signage available
- 2 common conference rooms available
- Open spacious restrooms w/ showers on both levels
- T-1, DSL & Comcast available
- On site management
- Just west of Hwy. 287, easy access
- Easy access to Hwy. 36, Hwy 287 and NW Parkway

### Availability:

Unit:  
200

Square Footage:  
1,119

### Lease Details:

Space available:

Please see below

Max contiguous:

1,089

Lease Rate:

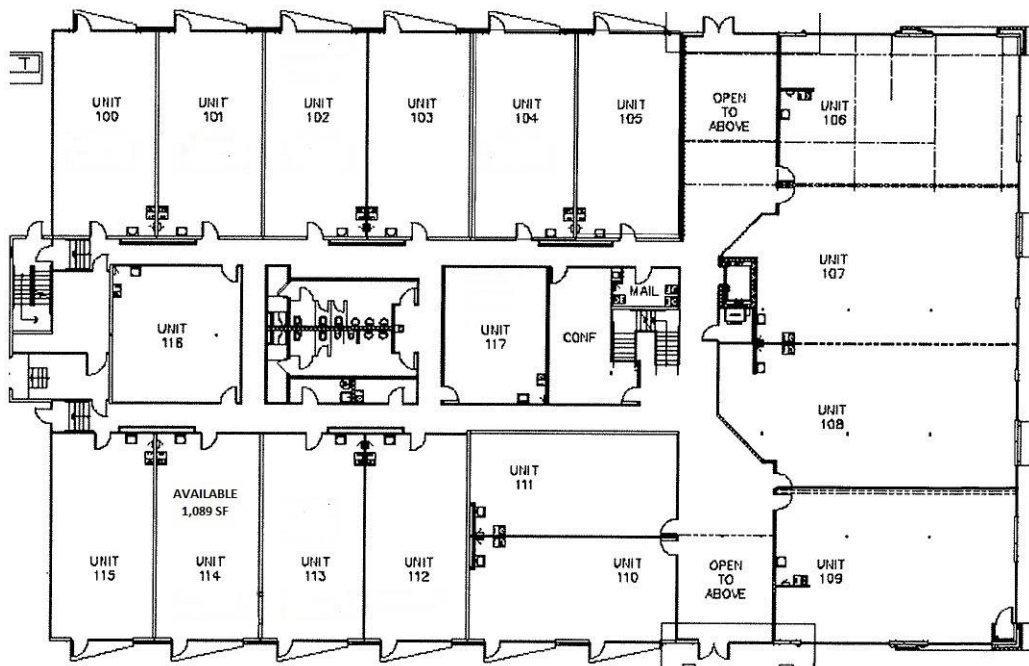
\$19.50/SF Modified Gross

Lease Term:

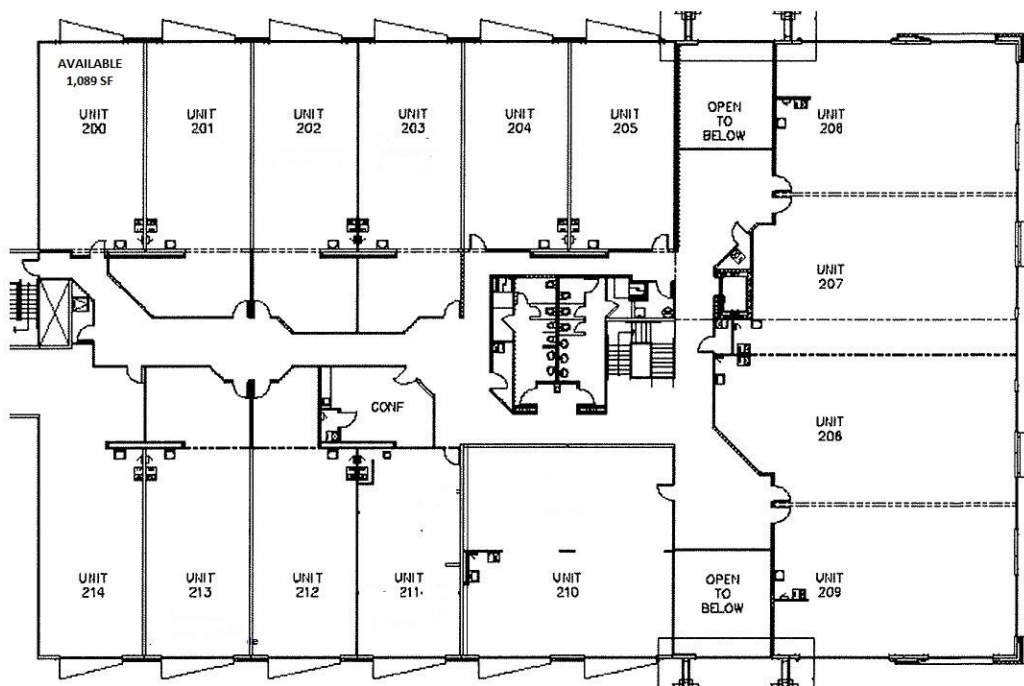
3-5 years



*Exclusively represented by Vista Commercial Advisors: Chip McReynolds  
303-974-7600 ext. 102 or [mcreynolds@vistacommercial.com](mailto:mcreynolds@vistacommercial.com)*



## First Floor



## Second Floor

130 Old Laramie Trail, Suite 200  
Lafayette, Colorado 80026

303-974-7600  
[www.vistacommercial.com](http://www.vistacommercial.com)

1434 Spruce Street, Suite 100  
Boulder, Colorado 80302

Vista Commercial Advisors, Inc. obtained information contained herein from sources believed to be reliable. The verification/accuracy is not guaranteed. It is submitted subject to errors, omissions, price change, rate, prior sale, lease or financing, or withdrawal without notice. You and your tax, broker and legal advisors should conduct your own investigation to confirm information. All marks displayed on this document are the property of their respective owners.