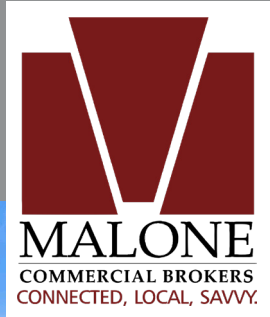


FOR LEASE | INDUSTRIAL SPACE

12 Grays Lane | Biddeford, ME



3,000± SF INDUSTRIAL SPACE

- Layout consists of warehouse space with mezzanine and small office
- Located right off of the Maine Turnpike and Biddeford Connector
- One overhead door and one loading dock
- Ample on-site parking

LEASE RATE: \$9.00/SF NNN



BRANDON MITCHELL
207.358.7057 D
207.415.7982 C
brandon@malonecb.com

MALONE COMMERCIAL BROKERS
5 Moulton Street • Suite 3
Portland, ME 04101
207.772.2422 • malonecb.com

PROPERTY SUMMARY

12 Grays Lane | Biddeford, ME



OWNER: Grain Architectural Millwork

DEED: Book 18823, Page 535

ASSESSOR: Map 12, Lot 12

LOT SIZE: 2.87± AC

BUILDING SIZE: 7,560± SF

AVAILABLE SPACE: 3,000± SF

YEAR BUILT: 1988

CONSTRUCTION: Masonry

ROOF: Metal

SIDING: Metal

CEILING HEIGHT: 14'±

HVAC: Forced hot air; oil

UTILITIES: Municipal water & sewer

RESTROOM: One (1)

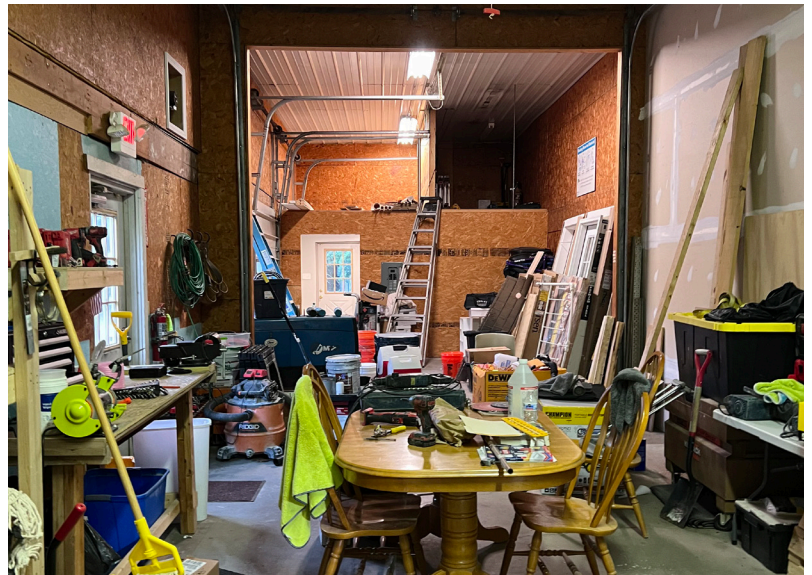
LOADING: One (1) overhead door and one (1) loading dock

SIGNAGE: Pylon at street

PARKING: Ample on-site

ZONING: I1 - General Industrial
B2 - Highway Business

LEASE RATE: \$9.00/SF NNN



FOR LEASE | INDUSTRIAL SPACE

12 Grays Lane | Biddeford, ME



This document has been prepared by Malone Commercial Brokers for advertising and general information only. Malone Commercial Brokers makes no guarantees, representations or warranties of any kind, expressed or implied, regarding, but not limited to, warranties of content, accuracy, and reliability. Any interested party should undertake their own inquiries as to the accuracy of the information. Malone Commercial Brokers excludes unequivocally all informed or implied terms, conditions and warranties arising out of this document and excludes all liability for loss and damages there from. All data is subject to change of price, error, omissions, other conditions or withdrawal without notice. Malone Commercial Brokers is acting as the Seller's/Lessor's agent in the marketing of this property.



BRANDON MITCHELL
207.358.7057 D
207.415.7982 C
brandon@malonecb.com

MALONE COMMERCIAL BROKERS
5 Moulton Street • Suite 3
Portland, ME 04101
207.772.2422 • malonecb.com