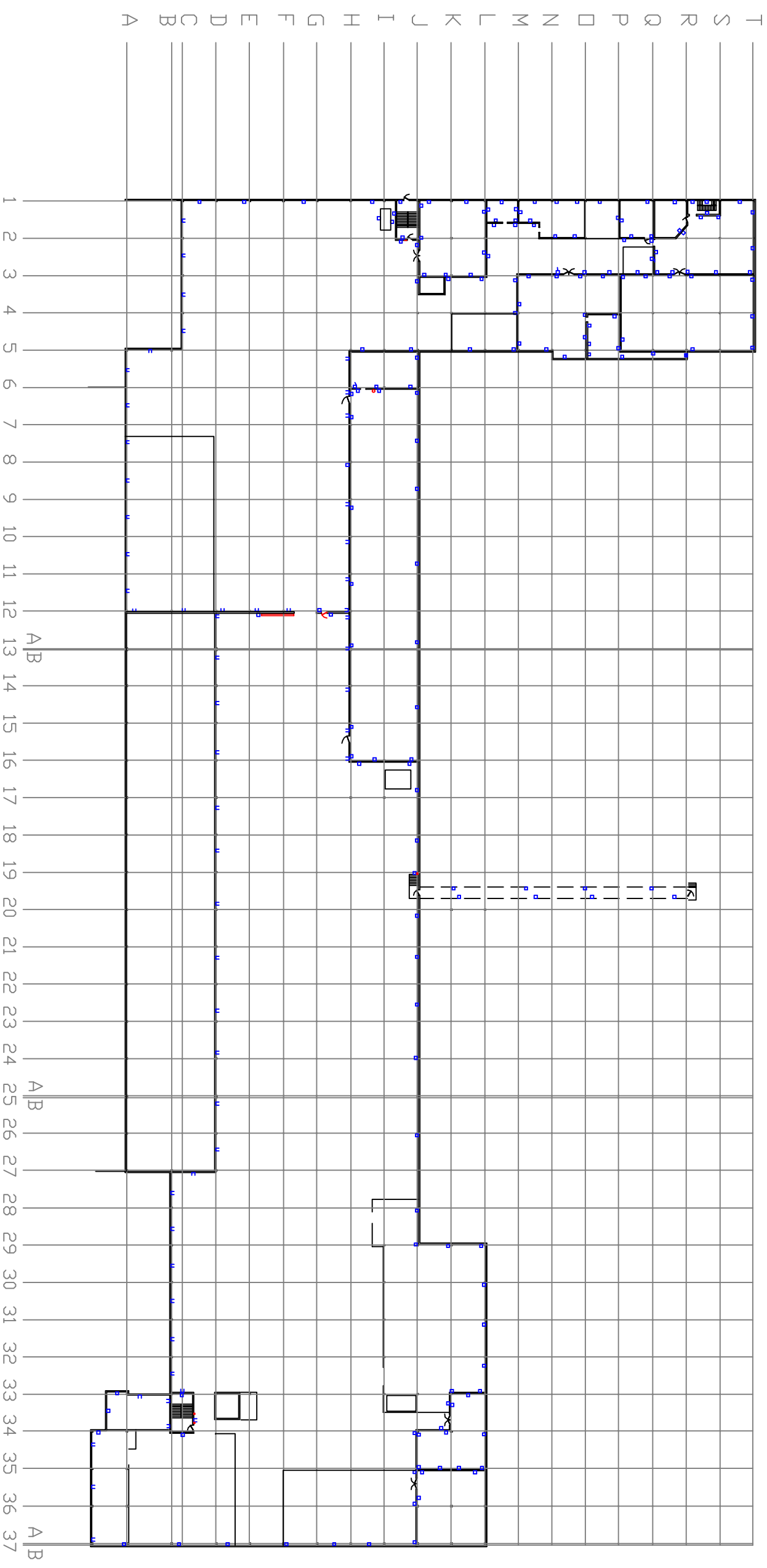


# Basement



3700 VICTORY DRIVE COLUMBUS, GA. 31903 <small>DRAWINGS GENERATED BY IN-LINE AUTOCAD/PLT GROUP, INC.          BIRMINGHAM, AL 35244 205-988-1500</small>		<b>REVISIONS:</b> B. REV. TRIPLE S CONV. C. ADD'D REV. PACKING AREA D. REV. FLOOR LAYOUT E. REV. LN-4 LOCATION		F. ADD'D LN-2 DVEN G. REV. LN-2 LAYOUT H. REV. LN-2 CUTTING LAYOUT I. REV. LN-2 PACKING & DVEN CENTER LINE K. REV. UPDATE ENTIRE LINE LAYOUT		L. ADD'D NEW BALLASTING SYSTEM M. ADD'D GRAHAM GRINDER SYSTEM N. REMODELED OFFICES		<b>NOTES</b> UNLESS OTHERWISE SPECIFIED: 1. BREAK ALL SHARP CORNERS 2. 1/8"x45° CHAMFER ON ALL HOLES 3. STAMP PART NUMBER ON PART		<b>TOLERANCES</b> UNLESS OTHERWISE SPECIFIED ALL DECIMAL DIMENSIONS SHALL BE HELD WITHIN ± .005 AND ALL COMMON FRACTIONAL DIMENSIONS TO ± 1/64		<b>Scale:</b> NTS Drawn By: C. CALDWELL	<b>Basement Index</b> CEA Number: ACAD File Name 98-0043-J	<b>3</b>
Date: 12/15/00														