

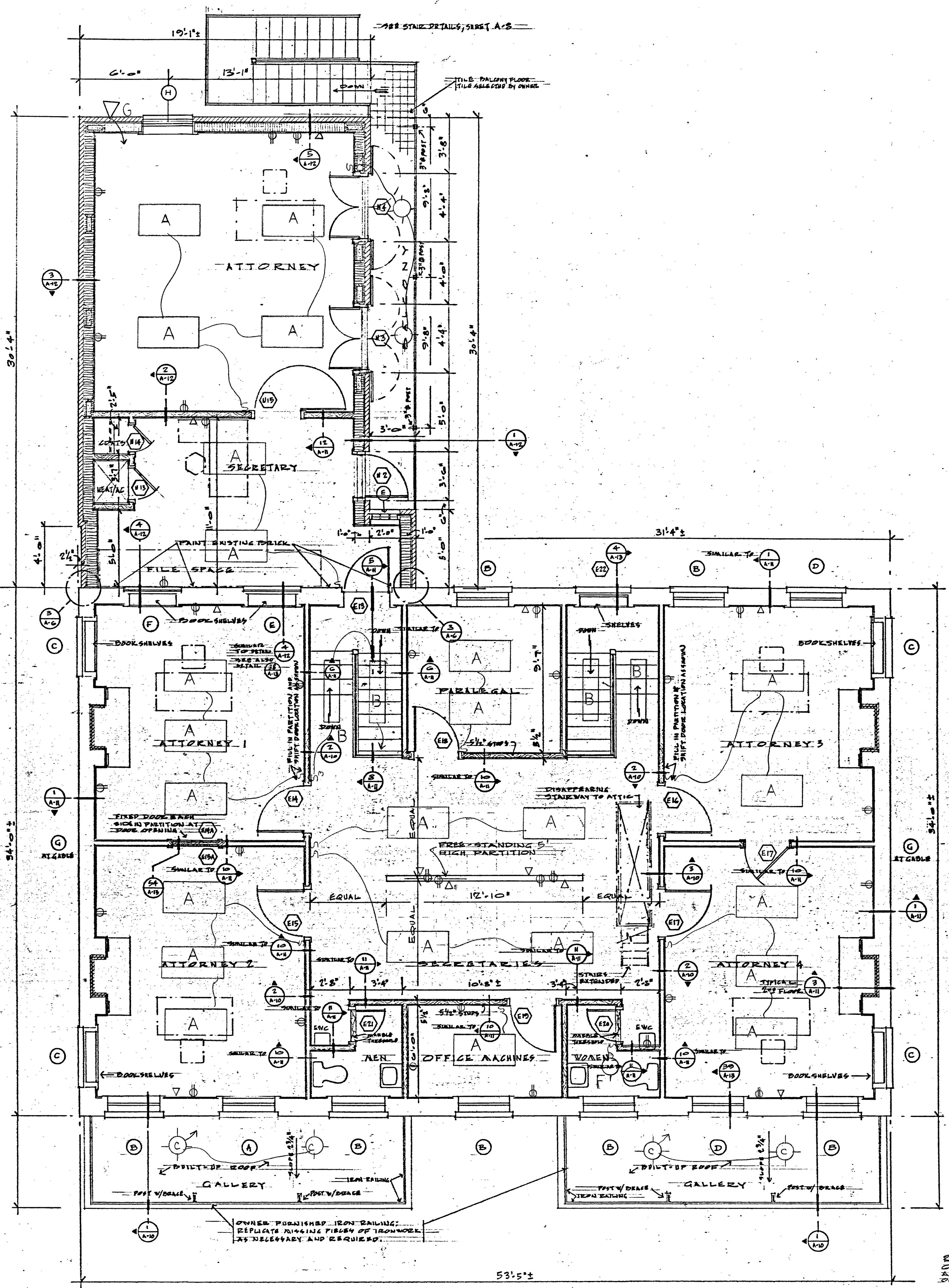
**FIRST FLOOR PLAN**

SCALE: 1/8" = 1'-0"

- LEGEND**
- EXISTING BRICK WALL WITH NEW INTERIOR FINISH (WINDOW 2400W)
  - NEW BRICK AND CONCRETE MASONRY UNIT WALL
  - EXISTING BRICK WALL WITH MATCHING INTERIOR FINISH
  - EXISTING STEPS WITH NEW FINISH EACH SIDE
  - NEW STUD PARTITION
  - WINDOW SYMBOL AND TYPE - SEE SCHEDULE
  - DOOR SYMBOL AND TYPE - SEE SCHEDULE

NOTE: FORM 2 TEN (10) LB. TRI-CLASS GENERAL PURPOSE DRY CHEMICAL PORTABLE FIRE EXTINGUISHERS IN RECESSED WALL CABINETS ONE ON EACH FLOOR.

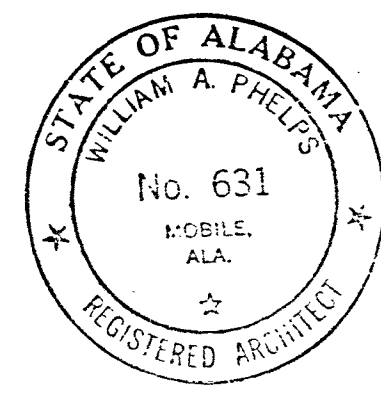
NOTE: REFER ALSO TO EXISTING FLOOR PLANS, SHEET A-2, AND DEMOLITION AND RENOVATION PLANS, SHEET A-3.



**SECOND FLOOR PLAN**

SCALE: 1/8" = 1'-0"

NOTE: REFER ALSO TO EXISTING FLOOR PLANS, SHEET A-2, AND DEMOLITION AND RENOVATION PLANS, SHEET A-3.



**LAW OFFICES FOR PATE AND PETERS ATTORNEYS**  
 56-58 SOUTH CONCLON ST. MOBILE, ALA.

WILLIAM A. PHELPS ARCHITECT  
 1000 BEL AIR BOULEVARD, SUITE 137 MOBILE, ALA.

DATE: MAR. 1, 1983 APPROVED BY: [Signature] DRAWING NUMBER: A-4 of 13