



FOR LEASE

Kalihi Warehouse for Lease

287 Kalihi St.
Honolulu, HI 96819

PROPERTY SUMMARY

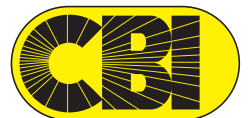
Building Size:	5,336 SF
Land Size:	7,100 SF
TMK:	1-1-2-4-26
Zoning:	I-2
Base Rent:	\$1.75 per SF
Estimated CAM:	\$0.56
Annual Property Tax:	\$29,543



Ka'ala Shea (S)
RS-77820
808-372-1188
kshea@cbi-hawaii.com

Jasper Jay D. Marcelo (S)
RS-84512
808-222-5165
jmarcelo@cbi-hawaii.com

NAI CBI Hawaii
1712 S. King Street Suite 201
Honolulu, HI 96826
808.942.7100 | www.cbi-hawaii.com





PROPERTY DESCRIPTION

287 Kalihi St. offers 5,336 SF of flexible industrial space on 7,100 SF of land size. This versatile warehouse offers a highly functional layout, ideal for a wide range of commercial and industrial uses.

The property provides generous interior space complemented by a fenced front gate, an outdoor yard area, allowing both operational efficiency and flexibility.

There are multiple offices, roll-up door, large upper mezzanine, upper loft space, and lower parking stalls.

Centrally located in Kalihi, near Honolulu harbor, Nimitz Highway, HNL Airport and Downtown Honolulu.

PROPERTY HIGHLIGHTS

Industrial and Commercial

- Ample space to hold your Industrial and/or Commercial Operations

Prime Location

- Central Kalihi area, near Honolulu Harbor, Nimitz Highway, HNL Airport, and Downtown Honolulu



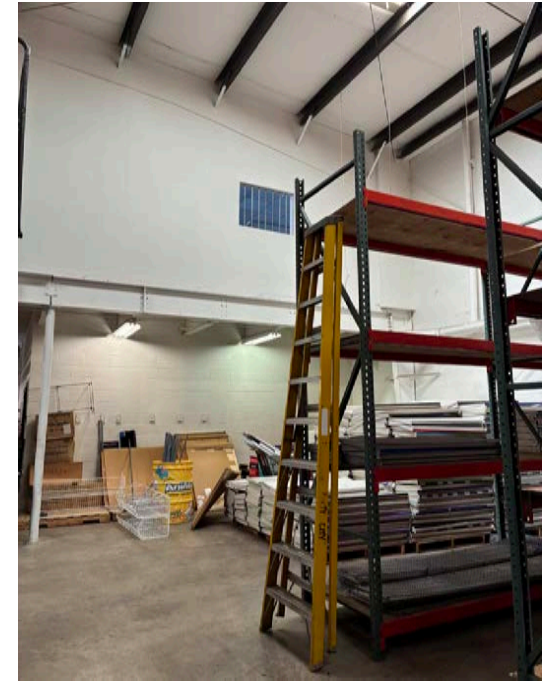
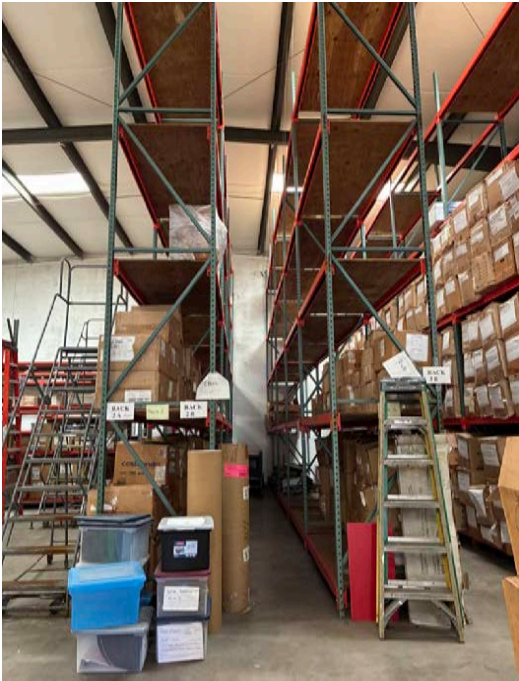
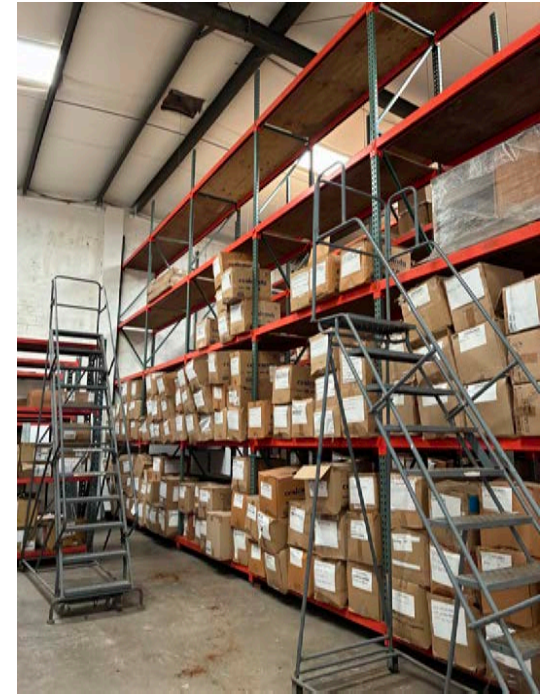
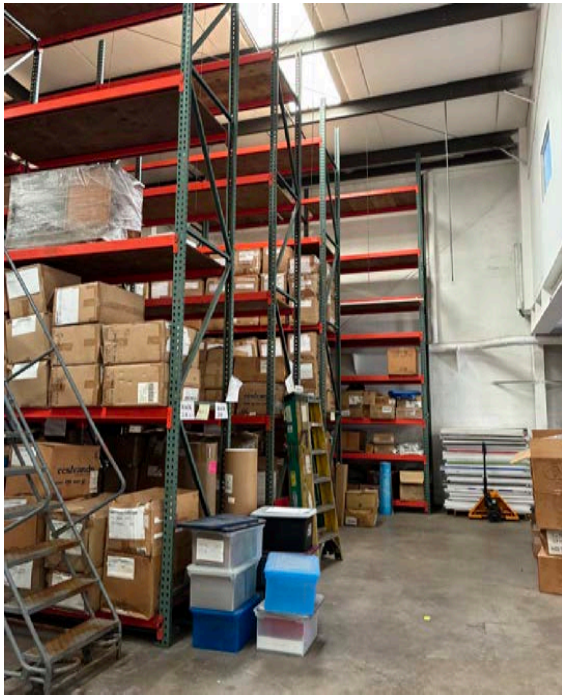
Ka'ala Shea (S)
RS-77820
808-372-1188
kshea@cbi-hawaii.com

Jasper Jay D. Marcelo (S)
RS-84512
808-222-5165
jmarcelo@cbi-hawaii.com

NAI CBI Hawaii

1712 S. King Street Suite 201
Honolulu, HI 96826
808.942.7100 | www.cbi-hawaii.com





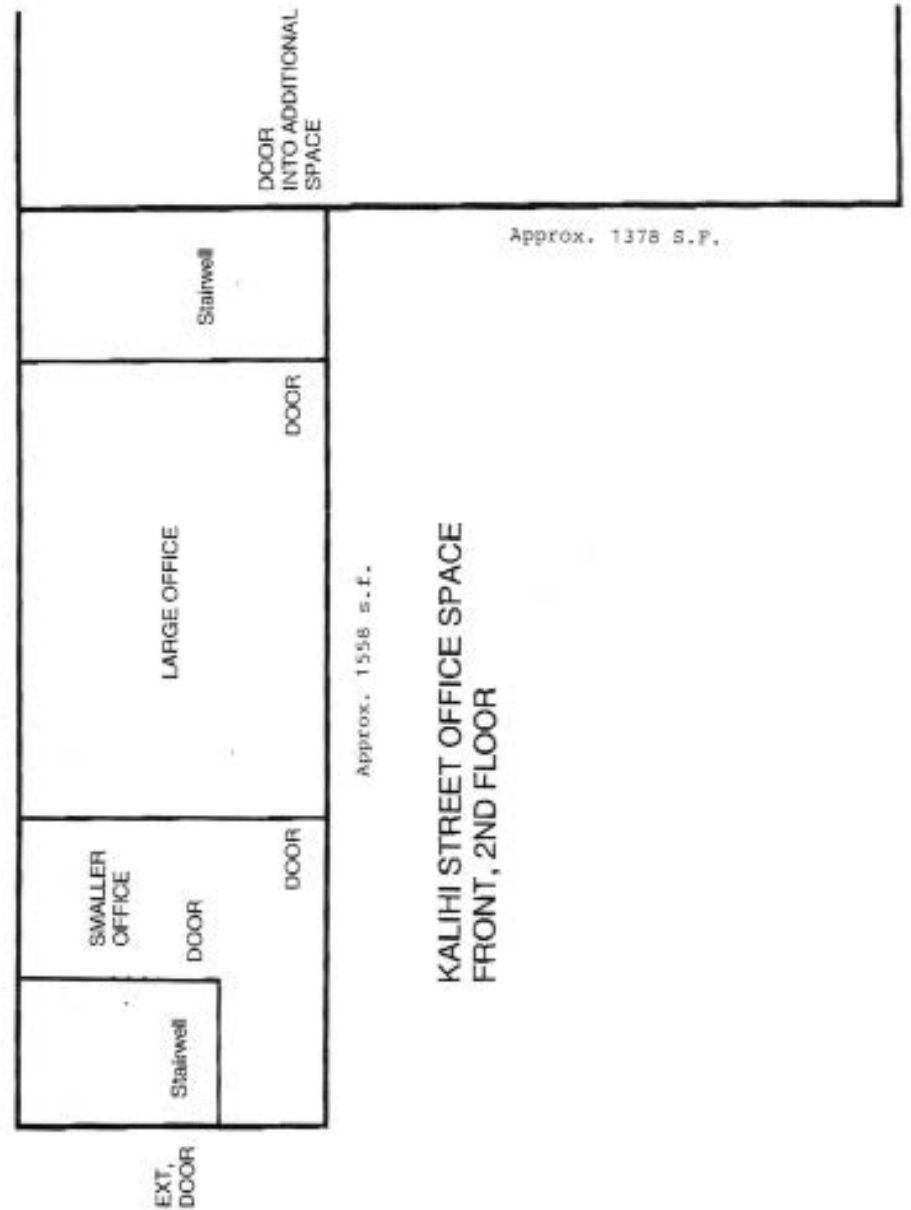
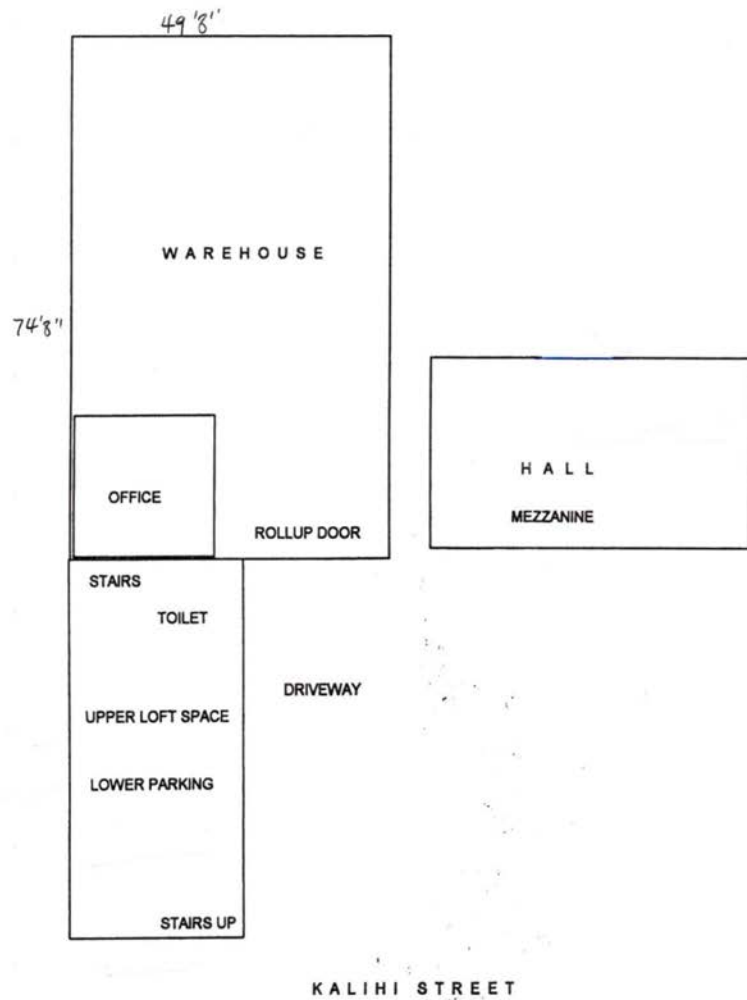
Ka'ala Shea (S)
RS-77820
808-372-1188
kshea@cbi-hawaii.com

Jasper Jay D. Marcelo (S)
RS-84512
808-222-5165
jmarcelo@cbi-hawaii.com

NAI CBI Hawaii

1712 S. King Street Suite 201
Honolulu, HI 96826
808.942.7100 | www.cbi-hawaii.com





Ka'ala Shea (S)
 RS-77820
 808-372-1188
 kshea@cbi-hawaii.com

Jasper Jay D. Marcelo (S)
 RS-84512
 808-222-5165
 jmarcelo@cbi-hawaii.com

NAI CBI Hawaii
 1712 S. King Street Suite 201
 Honolulu, HI 96826
 808.942.7100 | www.cbi-hawaii.com

