

5 PEGUES PLACE
LONGVIEW, TEXAS 75601



Offered Exclusively by:
Beer Wells Real Estate Services
East Texas, Inc.
P. O. Box 3449
Longview, TX 75606
www.beerwellseasttexas.com

For more information contact:
Walter R. Northcutt
(903) 753-2191
wnorthcutt@beerwellseasttexas.com



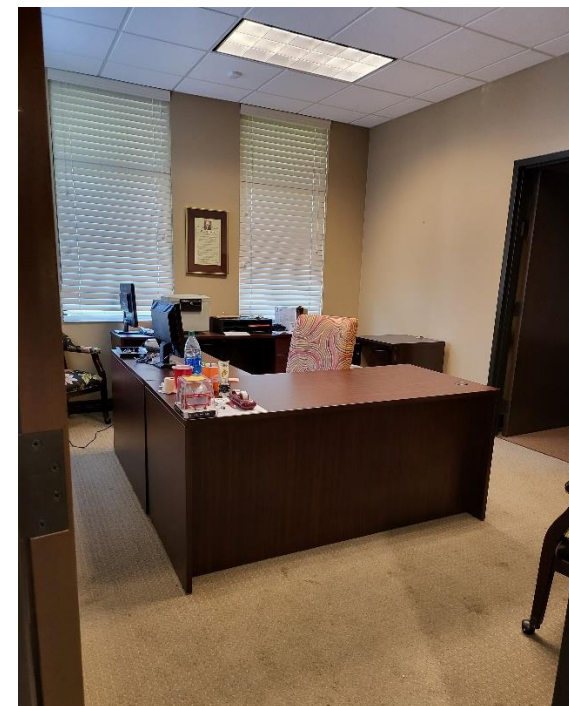
PROPERTY INFORMATION

Location:	Corner of Pegues Place and Judson Road
General Access:	Judson Road
Gross Leasable Area:	Office is approximately 5,239 SF Shop is approximately 1,664 SF Land is approximately 2.9 Acres
Amenities:	High visibility, conveniently located, ample parking, training/meeting room
Zoning:	Office

5 PEGUES PLACE
LONGVIEW, TEXAS 75601



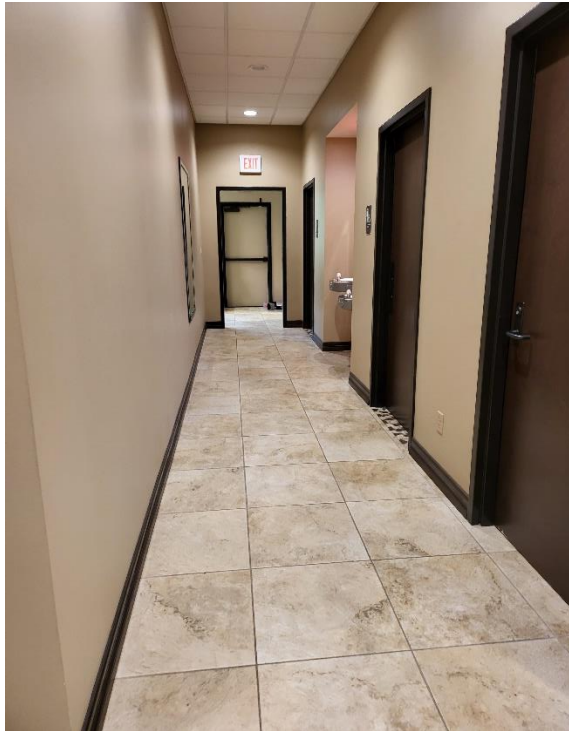
ADDITIONAL PHOTOS



This information has been secured from sources we believe to be reliable, but we make no representations or warranties, expressed or implied, as to the accuracy of the information. References to square footage or age are approximate.



5 PEGUES PLACE
LONGVIEW, TEXAS 75601



This information has been secured from sources we believe to be reliable, but we make no representations or warranties, expressed or implied, as to the accuracy of the information. References to square footage or age are approximate.

5 PEGUES PLACE
LONGVIEW, TEXAS 75601



This information has been secured from sources we believe to be reliable, but we make no representations or warranties, expressed or implied, as to the accuracy of the information. References to square footage or age are approximate.

5 PEGUES PLACE
LONGVIEW, TEXAS 75601

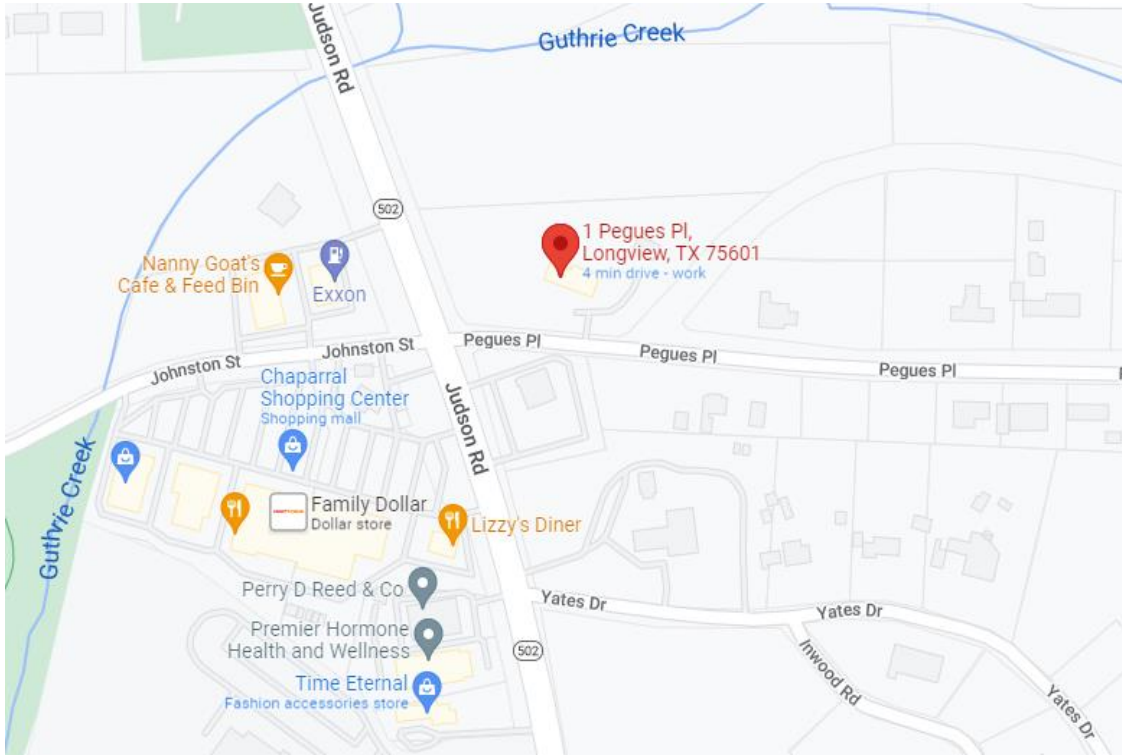


This information has been secured from sources we believe to be reliable, but we make no representations or warranties, expressed or implied, as to the accuracy of the information. References to square footage or age are approximate.

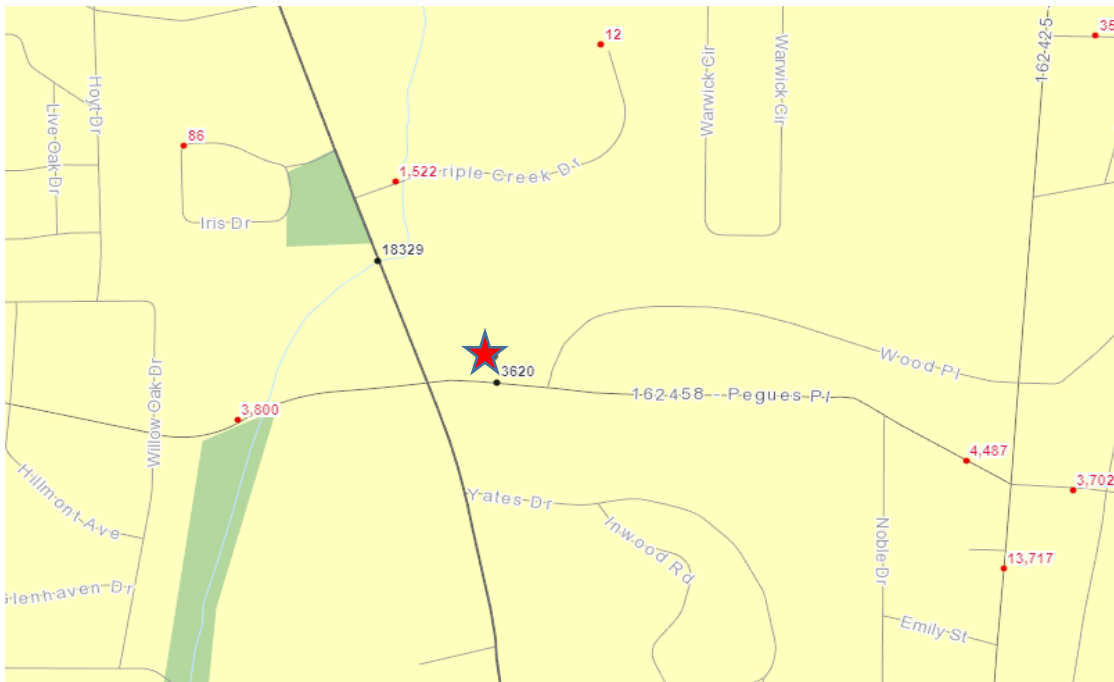
5 PEGUES PLACE
LONGVIEW, TEXAS 75601



MAP



TRAFFIC COUNTS



This information has been secured from sources we believe to be reliable, but we make no representations or warranties, expressed or implied, as to the accuracy of the information. References to square footage or age are approximate.