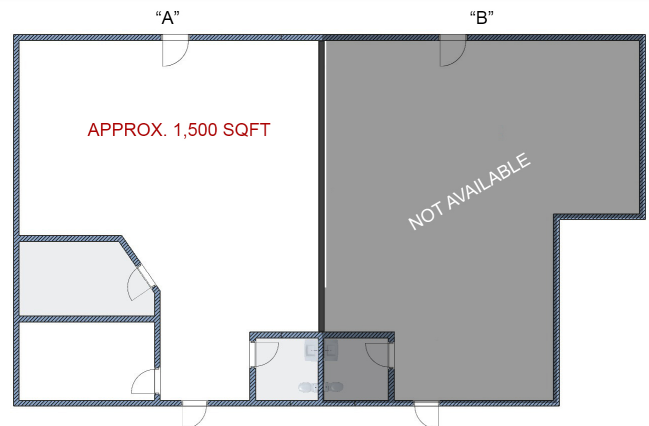


FOR LEASE | APPROX. 1,500 SF



Property Highlights

- ▶ Excellent trade area servicing residential as well as High Pointe Business Park.
- ▶ Unit "A" Available.
- ▶ Prior Hair Salon.
- ▶ Spacious Interior.
- ▶ Air conditioning.
- ▶ Monument signage available.
- ▶ Please contact Eileen to tour.



CONTACT INFORMATION:

Eileen Doody

Senior Vice President Healthcare Services

949.390.5506 | CalBRE 00965140

Eileen.Doody@madisonmarquette.com

The information contained herein has been gathered from sources deemed reliable. Though we have no reason to doubt the accuracy, we do not guarantee it.

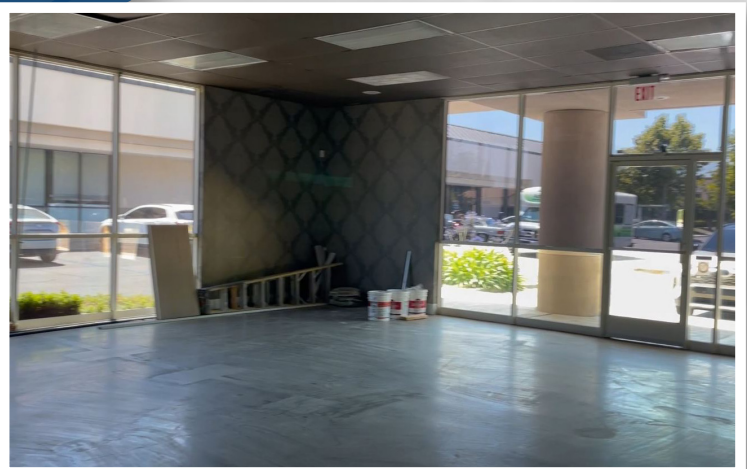
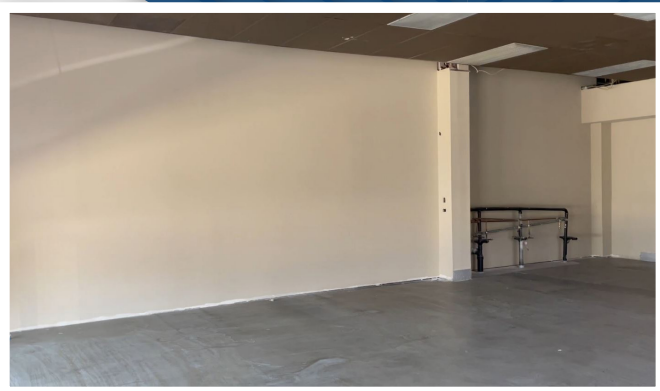
Medical Office Space

23691 VIA LINDA | MISSION VIEJO, CA 92691



MadisonMarquette
A Capital Guidance Company

FOR LEASE | APPROX. 1,500 SF



CONTACT INFORMATION:

Eileen Doody

Senior Vice President Healthcare Services

949.390.5506 | CaIBRE 00965140

Eileen.Doody@madisonmarquette.com

The information contained herein has been gathered from sources deemed reliable.
Though we have no reason to doubt the accuracy, we do not guarantee it.

2020 Main Street | Suite 800 | Irvine, CA 92614 | P. 949.390.5506 | C. 714.803.5560

madisonmarquette.com | CaIBRE 01522492