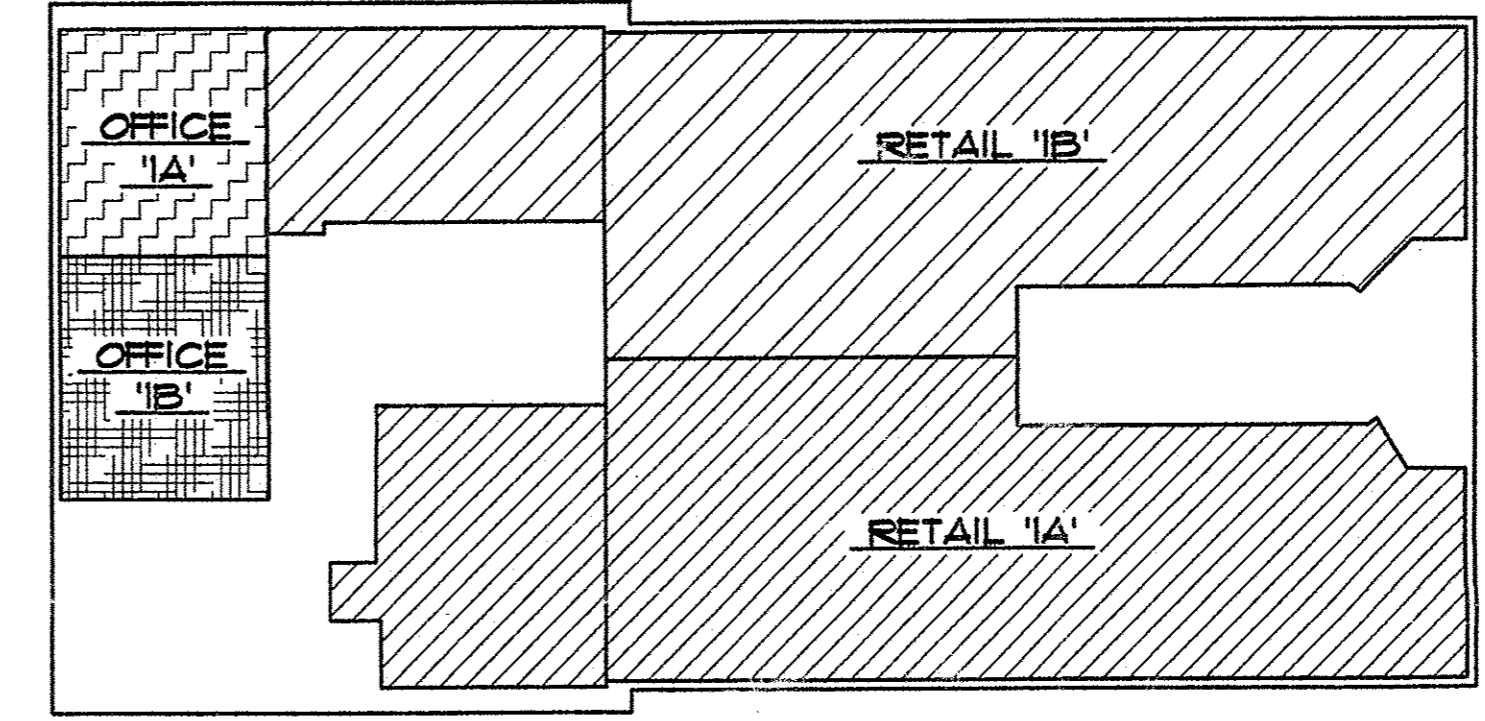


PRELIMINARY ONLY
NOT FOR CONSTRUCTION

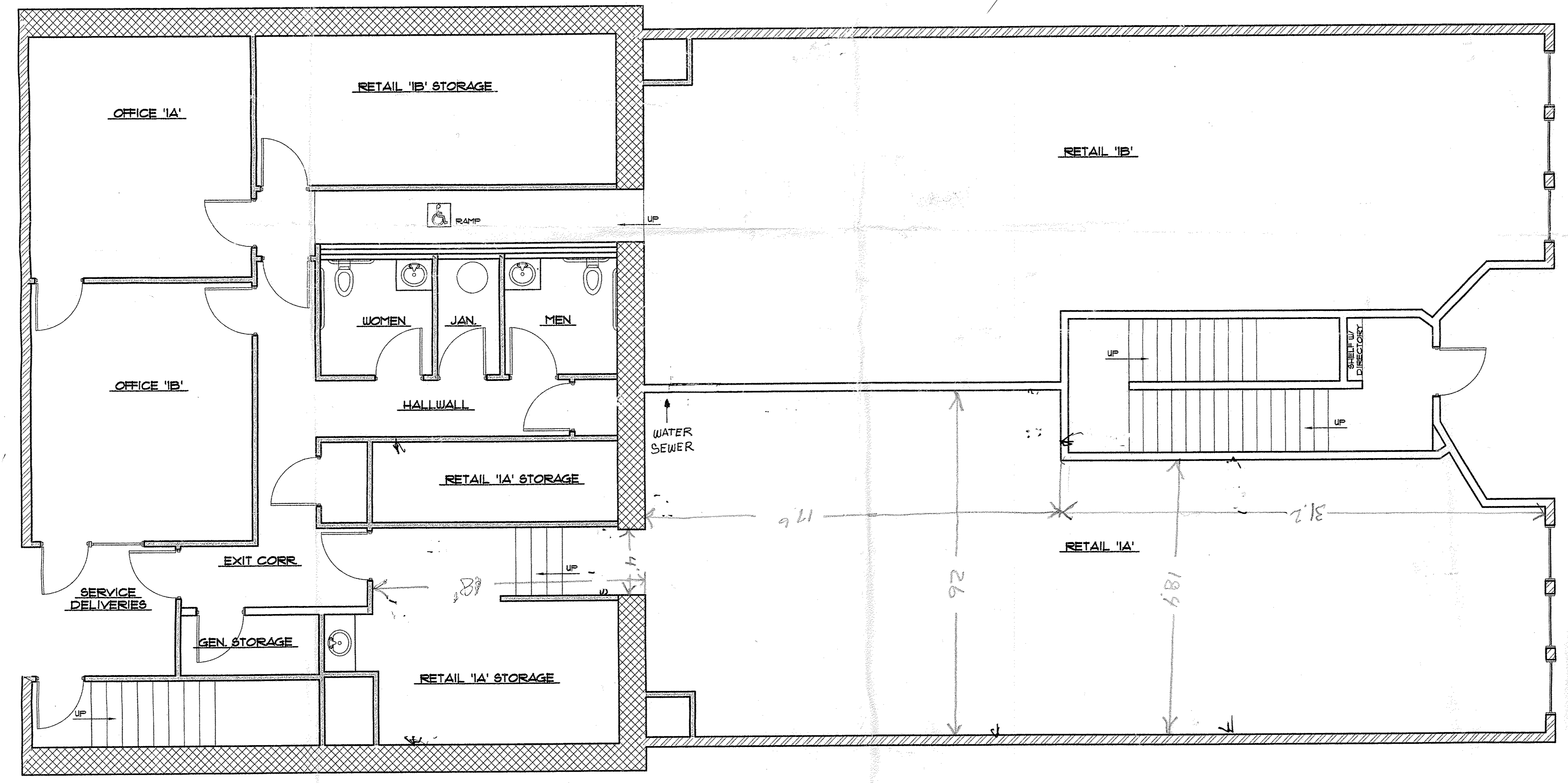
© 2003, PARTIN AND HILL
ARCHITECTS & PLANNERS, P.C.

Partin and Hill
ARCHITECTS & PLANNERS, P.C.
209 N.E. LINCOLN, HILLSBORO, OR. 97124
PHONE: 640-1216
FAX: 640-8552

AS BUILT DRAWINGS FOR:
THE INGLES PORTER BUILDING
2036 MAIN STREET
FOREST GROVE, OREGON



FIRST FLOOR KEY PLAN
SCALE: N.T.S.



FIRST FLOOR PLAN
SCALE: 1/4" = 1'-0"

FIRST FLOOR AREA LEGEND:

TOTAL FLOOR	4,650 SQ. FT.
RETAIL '1A' W/ STORAGE	1,492 SQ. FT.
RETAIL '1B' W/ STORAGE	1,479 SQ. FT.
OFFICE '1A'	223 SQ. FT.
OFFICE '1B'	242 SQ. FT.
COMMON AREA	1,214 SQ. FT.

LINE IS 2 INCHES
AT FULL SCALE
(IF NOT 2 INCHES THEN
SCALE ACCORDINGLY)

date: 9-11-2003
drawn by: PDR
checked: JLP

job no.: 03140

Sheet
A1
of 1