

FOR LEASE



Manaña 35 Business Center

10712 | 10730 | 10768 | 10800 N Stemmons Fwy, Dallas, TX 75220

DETAILS

- Can accommodate space sizes from 3,000-27,000 SF
- Easy Access to Major Thoroughfares
- 18'ft clear height
- Professionally Landscaped
- Security Lighting
- Ample Parking

SUITE 10712

- 3,842 Total SF
- 1 Semi Dock Door
- 1 Dock High Door
- 100% HVAC

SUITE 10730

- 4,906 SF (2 offices)
- 1 Ramp

SUITE 10768

- 3,300 SF (505 SF office)
- 2 dock high

SUITE 10800

- 27,515 SF (2,314 SF Office)
- 3 Dock High Doors
- 1 Ramp



FOR LEASING INFORMATION

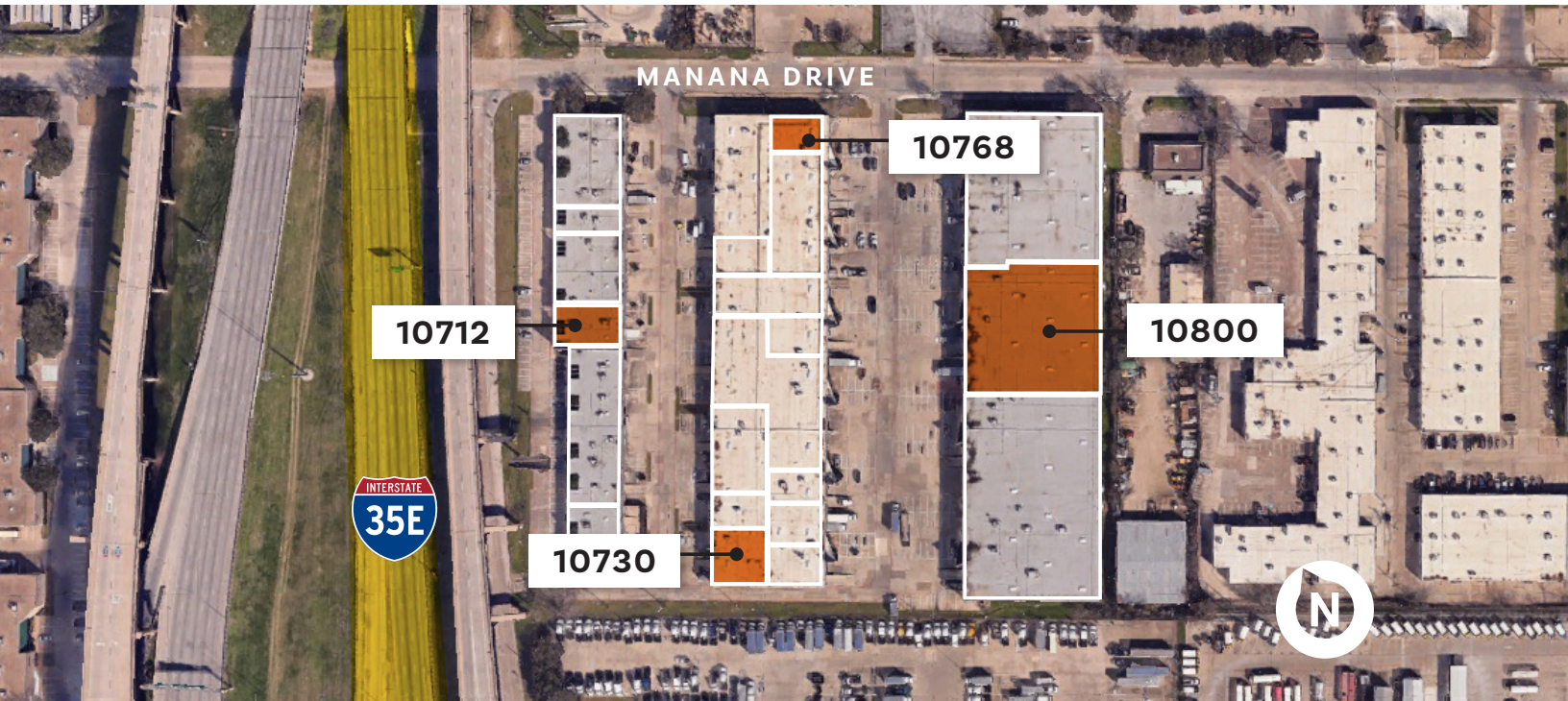
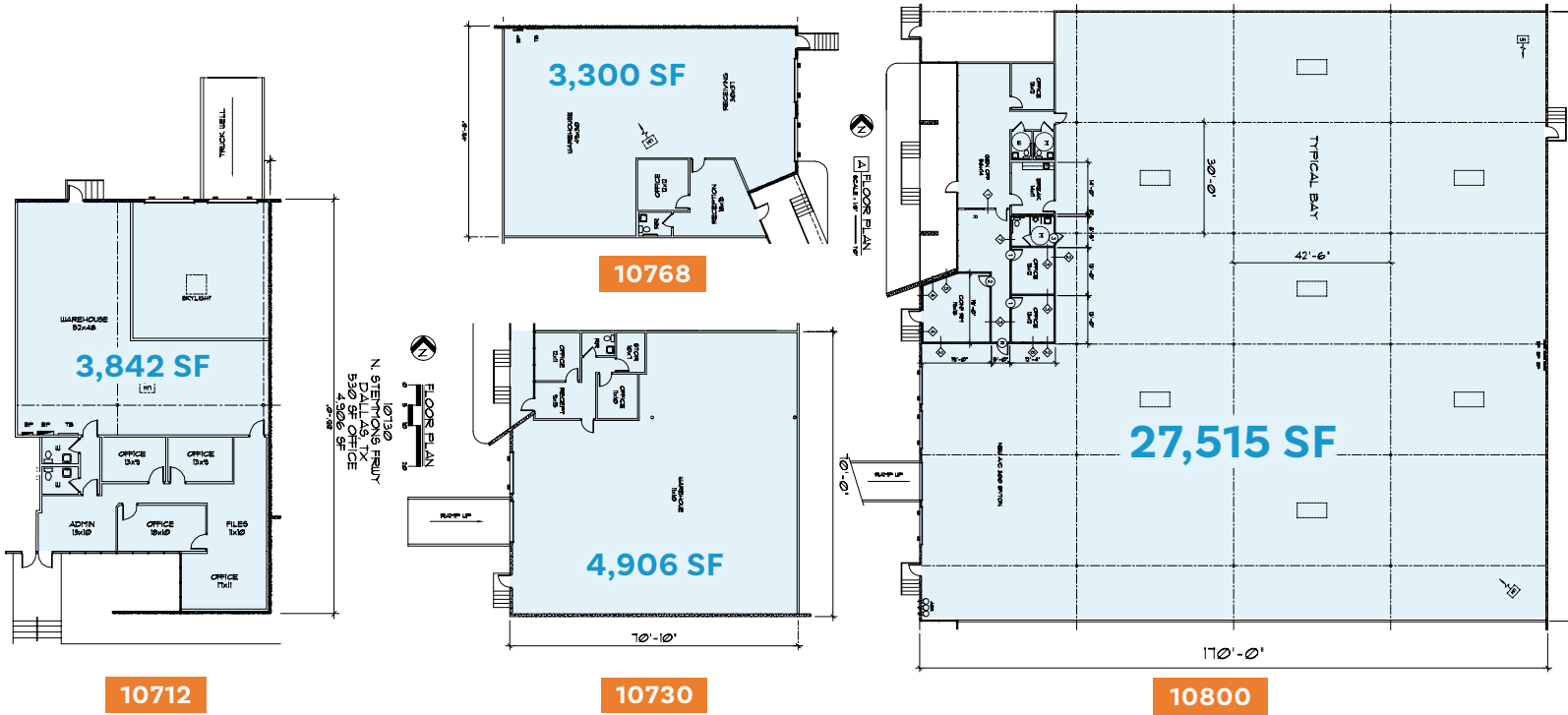
Giovanni Scardino
847.612.8488
giovanni.scardino@streamrealty.com

William Faulhaber
214.560.5189
william.faulhaber@streamrealty.com



Manaña 35 Business Center

10712 | 10730 | 10768 | 10800 N Stemmons Fwy, Dallas, TX 75220



Giovanni Scardino
847.612.8488
giovanni.scardino@streamrealty.com

William Faulhaber
214.560.5189
william.faulhaber@streamrealty.com

