

LANDSCAPE PLAN
TCA CLINIC
PHASE II
PANAMA CITY, FLORIDA

SOURCE DATA FOR SITE INFORMATION PROVIDED BY:

NO.	DATE	INITIALS	REVISION DESCRIPTION
01	11/05/15	-	CLIENT REVIEW
02	02/24/16	-	CLIENT REVIEW
03	03/10/16	-	CLIENT REVIEW
04			
05			
06			
07			

FLORIDA LANDSCAPE ARCHITECT #666925
SEAN P. DALY

PROJECT NUMBER:

SCALE: 1" = 20'

SHEET NUMBER

L1

DESIGN BY:
CHECKED BY:
OF ONE

TREE REMOVAL SCHEDULE

SPECIES	QUANTITY	CALIPER	MITIGATION REQUIRED
BAY	4	8"	8" (ONE (1) OUTSIDE OF DEVELOPMENT FOOTPRINT)
BAY	2	9"	WITHIN DEVELOPMENT FOOTPRINT - NONE REQUIRED
BAY	3	10"	WITHIN DEVELOPMENT FOOTPRINT - NONE REQUIRED
BAY	1	13"	WITHIN DEVELOPMENT FOOTPRINT - NONE REQUIRED
BAY	1	15"	WITHIN DEVELOPMENT FOOTPRINT - NONE REQUIRED
BAY	1	16"	16" (OUTSIDE DEVELOPMENT AREA)
BAY	2	21"	WITHIN DEVELOPMENT FOOTPRINT - NONE REQUIRED
CAMPHOR	3	9"	NUSIANCE - NONE REQUIRED
CAMPHOR	4	10"	NUSIANCE - NONE REQUIRED
CAMPHOR	1	13"	NUSIANCE - NONE REQUIRED
CYPRESS	1	12"	WITHIN DEVELOPMENT FOOTPRINT - NONE REQUIRED
CYPRESS	2	13"	WITHIN DEVELOPMENT FOOTPRINT - NONE REQUIRED
CYPRESS	1	14"	14" (OUTSIDE DEVELOPMENT AREA)
CYPRESS	3	15"	WITHIN DEVELOPMENT FOOTPRINT - NONE REQUIRED
CYPRESS	1	17"	WITHIN DEVELOPMENT FOOTPRINT - NONE REQUIRED
CYPRESS	1	18"	WITHIN DEVELOPMENT FOOTPRINT - NONE REQUIRED
OAK	3	8"	WITHIN DEVELOPMENT FOOTPRINT - NONE REQUIRED
OAK	1	8.5"	WITHIN DEVELOPMENT FOOTPRINT - NONE REQUIRED
OAK	4	9"	9" (ONE (1) OUTSIDE OF DEVELOPMENT FOOTPRINT)
OAK	1	9.5"	WITHIN DEVELOPMENT FOOTPRINT - NONE REQUIRED
OAK	7	10"	WITHIN DEVELOPMENT FOOTPRINT - NONE REQUIRED
OAK	1	11"	WITHIN DEVELOPMENT FOOTPRINT - NONE REQUIRED
OAK	1	11.5"	WITHIN DEVELOPMENT FOOTPRINT - NONE REQUIRED
OAK	3	12"	WITHIN DEVELOPMENT FOOTPRINT - NONE REQUIRED
OAK	1	13"	WITHIN DEVELOPMENT FOOTPRINT - NONE REQUIRED
OAK	1	13.5"	WITHIN DEVELOPMENT FOOTPRINT - NONE REQUIRED
OAK	1	14"	WITHIN DEVELOPMENT FOOTPRINT - NONE REQUIRED
OAK	4	15"	WITHIN DEVELOPMENT FOOTPRINT - NONE REQUIRED
OAK	2	15.5"	WITHIN DEVELOPMENT FOOTPRINT - NONE REQUIRED
OAK	1	16.5"	WITHIN DEVELOPMENT FOOTPRINT - NONE REQUIRED
OAK	2	19"	WITHIN DEVELOPMENT FOOTPRINT - NONE REQUIRED
OAK	2	20"	WITHIN DEVELOPMENT FOOTPRINT - NONE REQUIRED
OAK	1	21"	WITHIN DEVELOPMENT FOOTPRINT - NONE REQUIRED
OAK	1	23"	WITHIN DEVELOPMENT FOOTPRINT - NONE REQUIRED
OAK	1	24"	WITHIN DEVELOPMENT FOOTPRINT - NONE REQUIRED
OAK	1	29"	WITHIN DEVELOPMENT FOOTPRINT - NONE REQUIRED
OAK	1	34"	34" (HERITAGE)
OAK	1	38"	38" (HERITAGE)
OAK	1	42"	42" (HERITAGE)
PALM	1	15"	NONE REQUIRED
PINE	1	18"	WITHIN DEVELOPMENT FOOTPRINT - NONE REQUIRED
PINE	1	25"	WITHIN DEVELOPMENT FOOTPRINT - NONE REQUIRED
PINE	1	26"	WITHIN DEVELOPMENT FOOTPRINT - NONE REQUIRED
PINE	1	30"	30" (HERITAGE)
POPLAR	2	10"	WITHIN DEVELOPMENT FOOTPRINT - NONE REQUIRED
POPLAR	1	11"	WITHIN DEVELOPMENT FOOTPRINT - NONE REQUIRED
POPLAR	1	12"	WITHIN DEVELOPMENT FOOTPRINT - NONE REQUIRED
POPLAR	2	13"	WITHIN DEVELOPMENT FOOTPRINT - NONE REQUIRED
POPLAR	1	14"	14" (OUTSIDE DEVELOPMENT AREA)
POPLAR	1	15"	WITHIN DEVELOPMENT FOOTPRINT - NONE REQUIRED
POPLAR	1	17"	WITHIN DEVELOPMENT FOOTPRINT - NONE REQUIRED
POPLAR	1	18"	18" (OUTSIDE DEVELOPMENT AREA)

TOTAL HERITAGE & OUTSIDE DEVELOPMENT FOOTPRINT CALIPER INCHES REMOVED: 214 CALIPER INCHES

TREE MITIGATION SCHEDULE

PROPOSED SPECIES	QUANTITY	CALIPER PER TREE	MITIGATION PROVIDED
MUSKOGEE CRAPE MYRTLE	11	2" (ABOVE REQUIRED PARKING LOT TREE CALIPER)	22"
RED MAPLE	8	2" (ABOVE REQUIRED PARKING LOT TREE CALIPER)	16"
BALD CYPRESS	20	4" CALIPER	80"
RED MAPLE	11	4" CALIPER	44"
SWEETGUM	13	4" CALIPER	52"

MITIGATION PROVIDED: 214 CALIPER INCHES (TREE REPLACEMENT)

LANDSCAPE NOTES:

- ALL UTILITIES TO BE LOCATED PRIOR TO LANDSCAPE INSTALLATION.
- ALL PLANT MATERIAL TO BE FLORIDA #1 OR BETTER.
- ALL BED AREAS TO RECEIVE A 2" MINIMUM THICKNESS PINE STRAW MULCH APPLICATION.
- ALL TREES, SHRUBS, AND GROUNDCOVERS TO RECEIVE A SLOW RELEASE FERTILIZER UPON INITIAL INSTALLATION.
- QUANTITIES ARE PROVIDED FOR CONVENIENCE ONLY AND SHOULD BE VERIFIED BY THE CONTRACTOR.
- ALL PROPOSED SOD AREAS TO BE ZOYSIA.

LANDSCAPE REQUIREMENT CHART
PER CITY OF PANAMA CITY CODE

FRONTAGE BUFFERS - ONE (1) TREE PER 25'

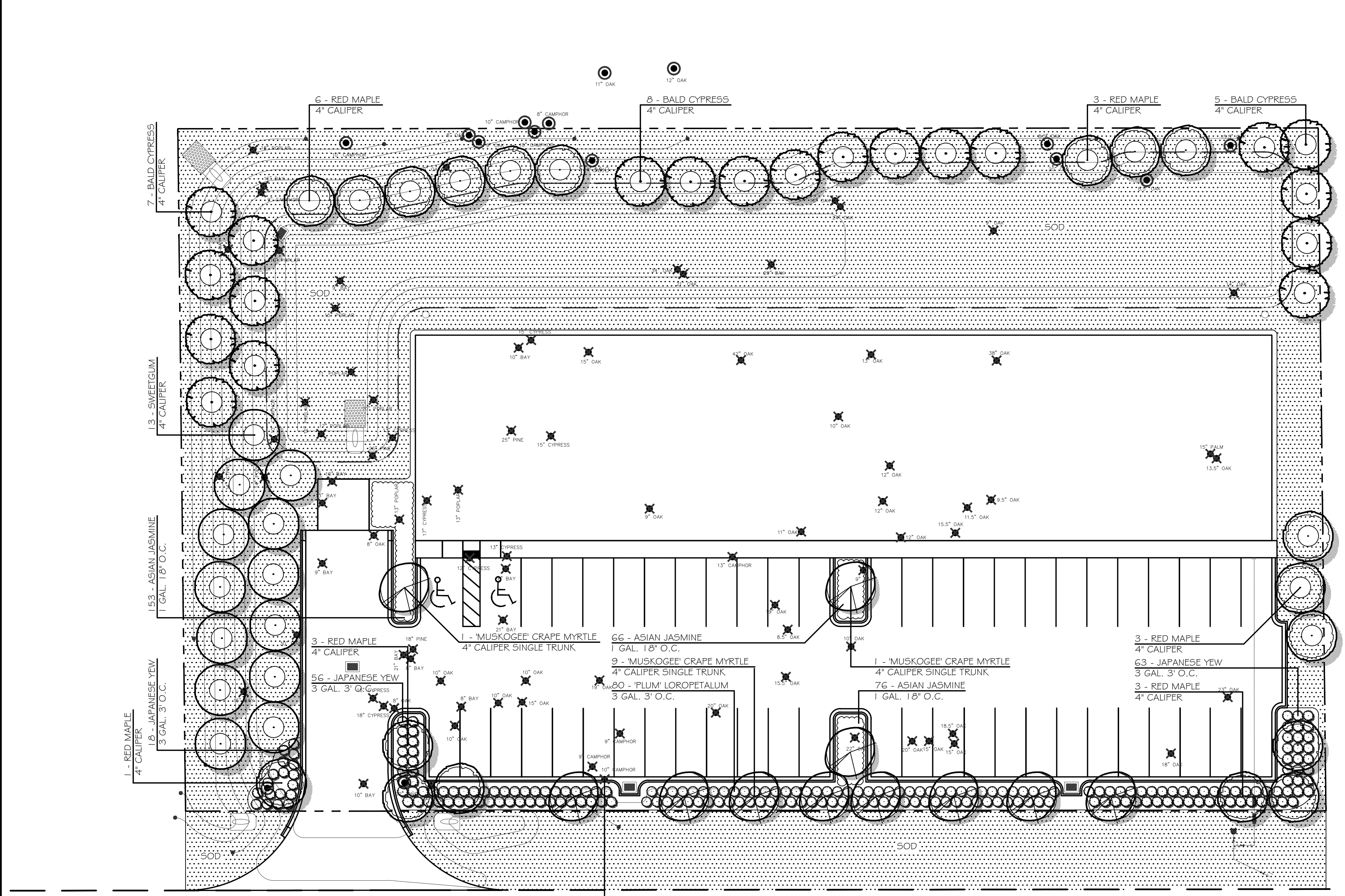
BOUNDARY	LENGTH	PROVIDED
NORTHERN	-	-
SOUTHERN	-	-
EASTERN	-	-
WESTERN	332.88'	13 TREES

INTERIOR REQUIREMENTS

REQUIREMENT	PROVIDED
PARKING ISLANDS & TERMINATIONS	PROVIDED
MISCELLANEOUS BUFFERS	6

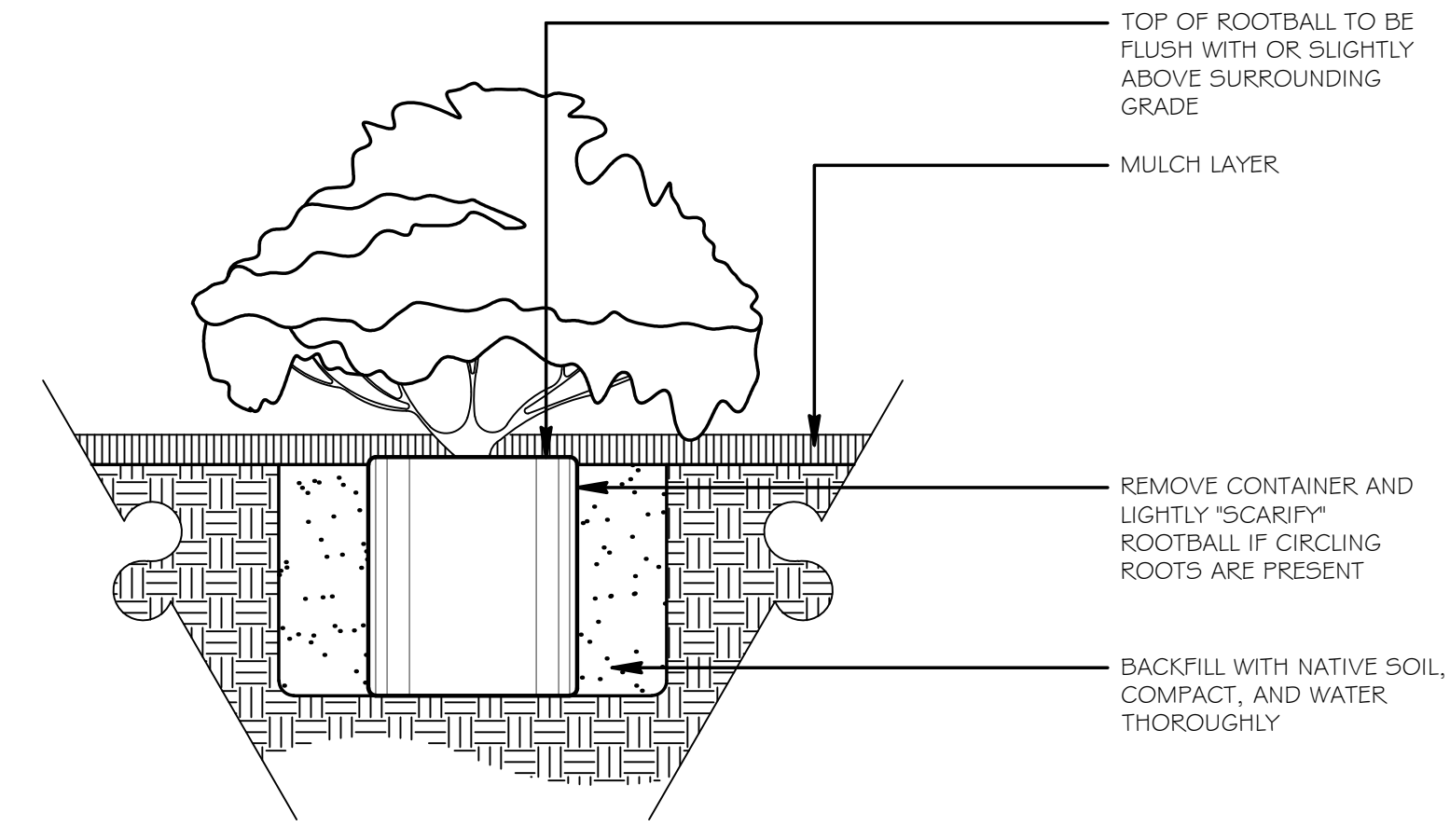
MISCELLANEOUS BUFFERS

DESCRIPTION	PROVIDED
18" PARKING SCREEN ALONG HARRISON AVENUE FRONTAGE	



HARRISON AVENUE

EXISTING TREE TO BE REMOVED, NOT WITHIN PROPERTY BOUNDARIES, NO MITIGATION REQUIRED (TYPICAL FOR ELEVEN)



CONTAINER SHRUB PLANTING
NOT TO SCALE