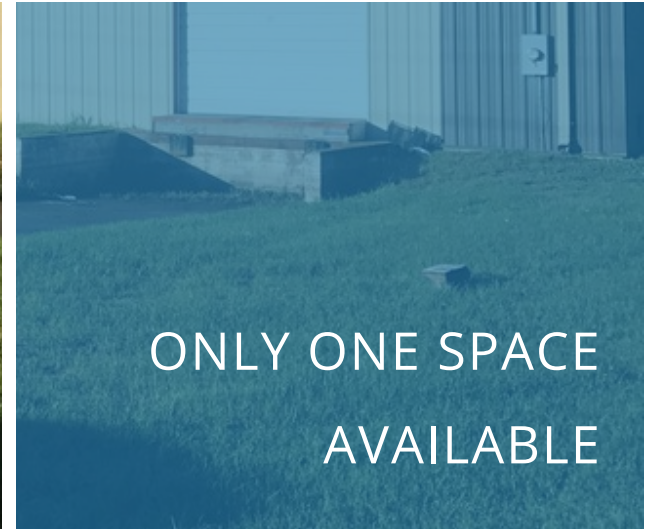


INDUSTRIAL  
PROPERTY FOR LEASE



ONLY ONE SPACE  
AVAILABLE

*Exclusively Presented By*

**GEORGE S. MEETZE**

803.900.8016

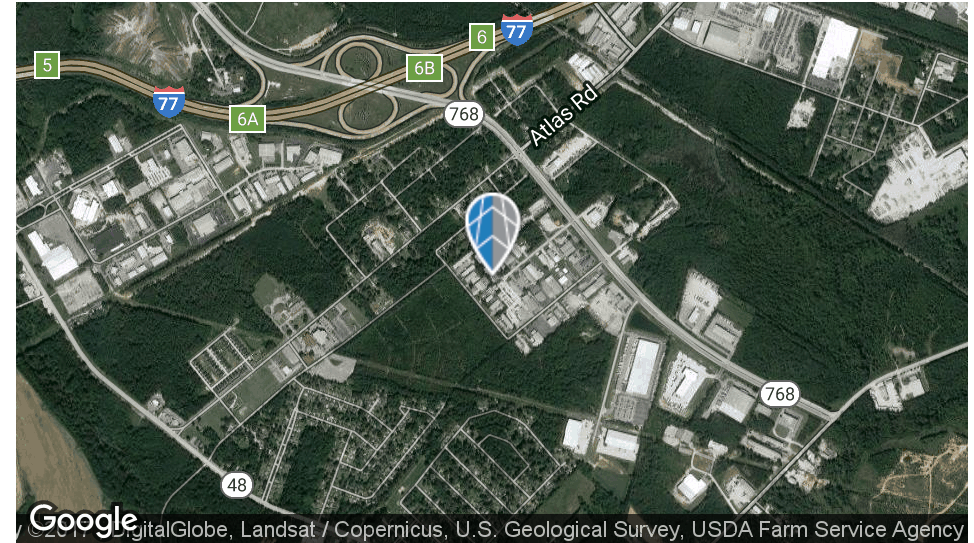
[gmeetze@roicommercialsc.com](mailto:gmeetze@roicommercialsc.com)

**ROI COMMERCIAL, LLC**

1300 Sumter Street

Columbia, SC 29201

803.900.8020



### PROPERTY SUMMARY

<b>Available SF:</b>	1,900 SF
<b>Lease Rate:</b>	\$850 per month (Net of Utilities)
<b>Lot Size:</b>	0.84 Acres
<b>Building Size:</b>	11,000 SF
<b>Ceiling Height:</b>	13.0 FT
<b>Year Built:</b>	1990
<b>Zoning:</b>	M-1, Light Industrial
<b>Market:</b>	Columbia
<b>Sub Market:</b>	Southeast Columbia
<b>Cross Streets:</b>	Shop Road and Leventis Drive

### PROPERTY OVERVIEW

+/-1900 square foot unit available. Unit has one 10'x10' roll up door. The location is convenient to downtown Columbia and I-77.

### PROPERTY HIGHLIGHTS

- 1- 1,900 Square foot suite available
- Suite has one 10'x10' grade level door
- Interstate 77 (Exit 6) approximately 1 mile away via Shop Road
- Zoned: M-1, Light Industrial

# LOCATION MAPS

