

ROGERS PARK

6725 N CLARK / CHICAGO, IL



END-CAP SPACE AVAILABLE FOR LEASE

SITE DETAILS

AVAILABILITY

- 1,942 SF AVAILABLE

FEATURES

- Prime end-cap location offering excellent visibility along Clark Street
- High pedestrian and vehicular traffic in dense Rogers Park neighborhood
- Dedicated on-site parking providing convenient customer access
- Less than one mile from Loyola University Chicago and close to CTS bus routes and CTA Red Line (Morse, Jarvis, Loyola stations)
- Existing multi-tenant monument signage available at property entrance

DEMOGRAPHICS WITHIN 3 MILES



Avg Household Income
\$108,761



Population
326,060

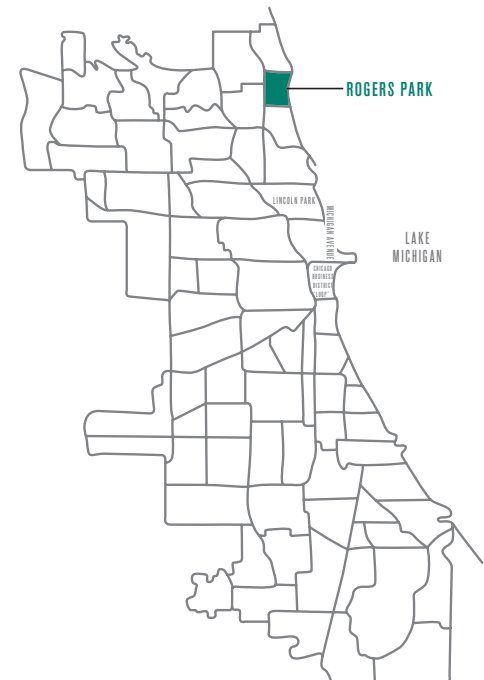


Daytime Population
264,529

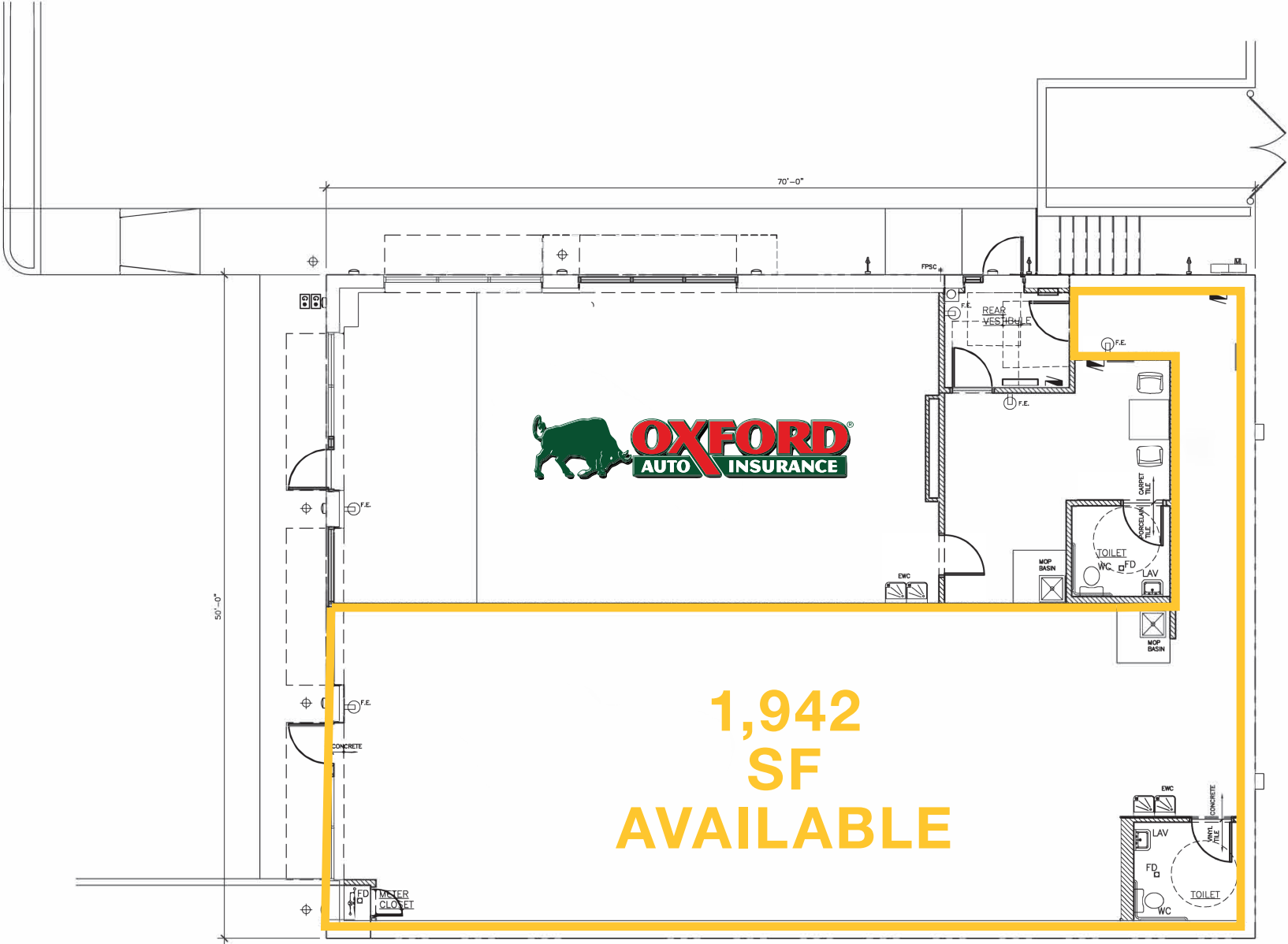
ADDRESS

6725 N. Clark
Chicago, IL

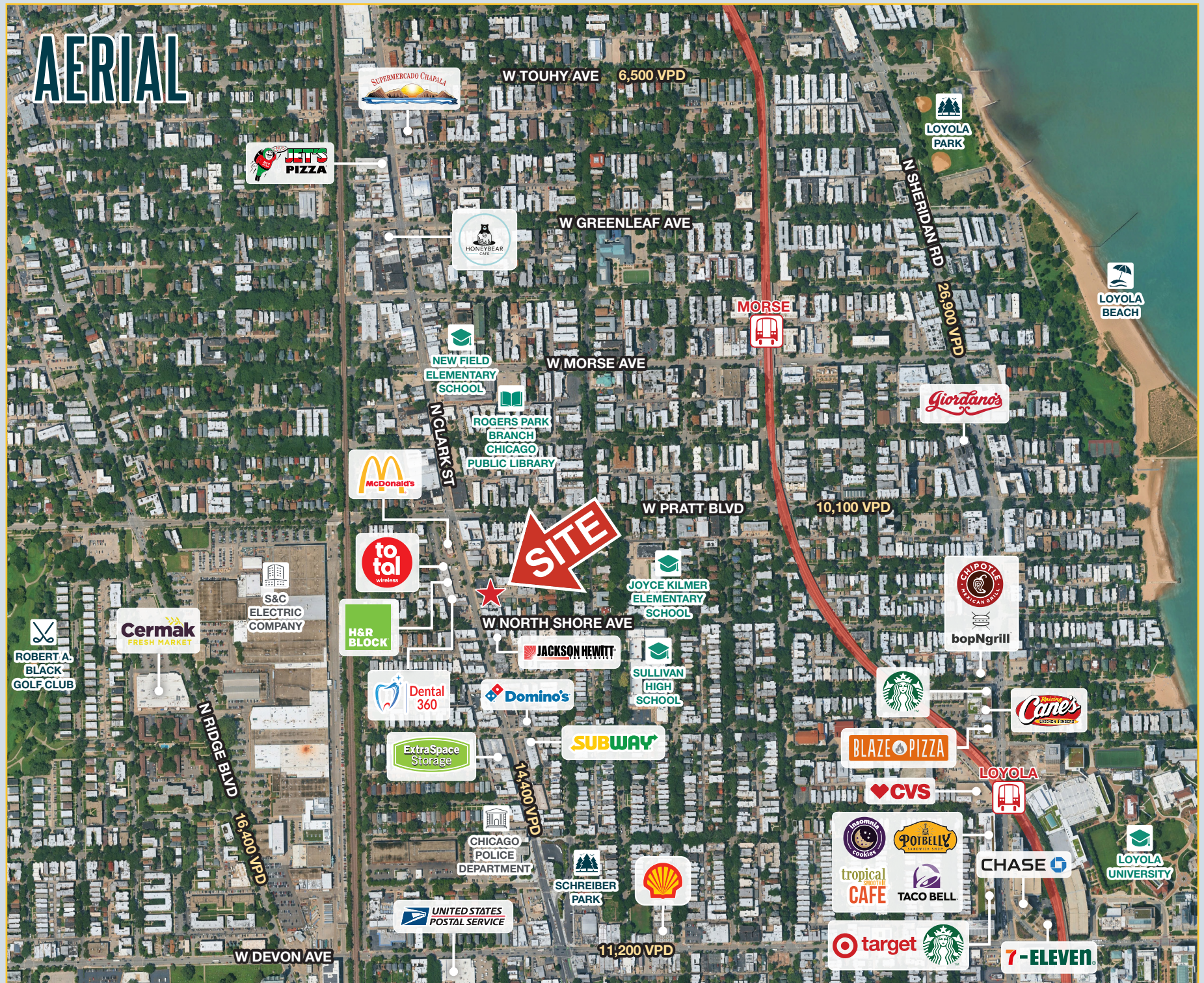
NEIGHBORING TENANTS



FLOOR PLAN



AERIAL



ROGERS PARK

6725 N CLARK CHICAGO, IL

BRENDAN REEDY

630.954.7390

BReedy@MidAmericaGrp.com

JIMMY DANAHER

630.954.7238

JDanaher@MidAmericaGrp.com

GRIFFIN FLEMING

630.954.7320

GFleming@MidAmericaGrp.com

