

801 Warrenville Road

Suite 185

801 Warrenville Rd, Lisle, IL 60532

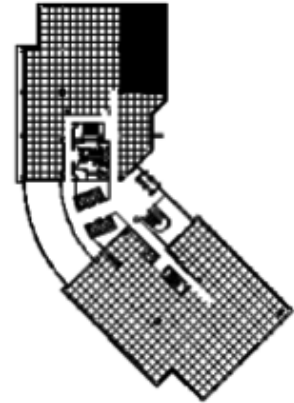
HAMILTON PARTNERS  
www.hamiltonpartners.com



### SUITE FEATURES

- Available Immediately!
- Corner location
- Three window private offices with sidelites
- Full kitchen
- Glass entry door at end of hallway
- Glass walled conference room

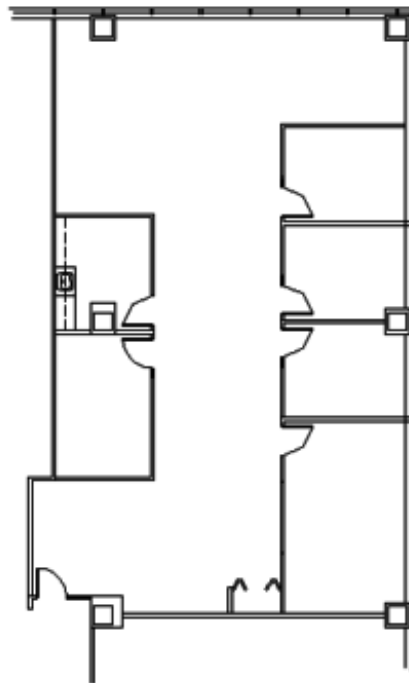
### FIRST FLOOR PLAN



### DETAILS

**Square Feet:** 2,808 S.F.  
**Net Rent:** \$15.00/S.F.  
**OP. Expense:** \$7.94/S.F.  
**Tax:** \$2.84/S.F.  
**Gross Rent:** \$25.78/S.F.

### SPACE PLAN



### CONTACT INFORMATION

**Gary Mori**

✉ [gary\\_mori@hpre.com](mailto:gary_mori@hpre.com)

P 630-719-5560

F 630-719-5570

**Philip Sheridan**

✉ [phil\\_sheridan@hpre.com](mailto:phil_sheridan@hpre.com)

P 630-719-5567

F 630-719-5570

**David Andrews**

✉ [da@hpre.com](mailto:da@hpre.com)

P 630-719-5565

F 630-719-5570