

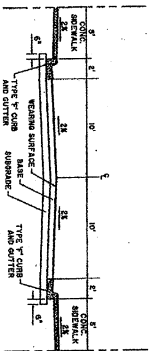


Conceptual  
7 AC SITE

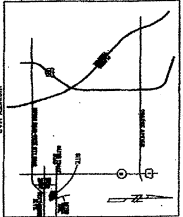
8th Hole

7th Hole

- LEGEND**
- EXISTING FLOOR ELEVATION
  - CATCH BASIN TYPE 'V' AND 'PE'
  - CATCH BASIN TYPE 'V' AND 'PE'
  - SURFACE WATER FLOW
  - PAVEMENT FINISH POINT



- NOTES**
1. THE FINISH FLOOR ELEVATION IS TO BE FROM 177.0 FT. M.A.S.L.
  2. THE FINISH FLOOR ELEVATION IS TO BE FROM 177.0 FT. M.A.S.L.
  3. THE FINISH FLOOR ELEVATION IS TO BE FROM 177.0 FT. M.A.S.L.
  4. THE FINISH FLOOR ELEVATION IS TO BE FROM 177.0 FT. M.A.S.L.
  5. THE FINISH FLOOR ELEVATION IS TO BE FROM 177.0 FT. M.A.S.L.
  6. THE FINISH FLOOR ELEVATION IS TO BE FROM 177.0 FT. M.A.S.L.
  7. THE FINISH FLOOR ELEVATION IS TO BE FROM 177.0 FT. M.A.S.L.
  8. THE FINISH FLOOR ELEVATION IS TO BE FROM 177.0 FT. M.A.S.L.
  9. THE FINISH FLOOR ELEVATION IS TO BE FROM 177.0 FT. M.A.S.L.
  10. THE FINISH FLOOR ELEVATION IS TO BE FROM 177.0 FT. M.A.S.L.
  11. THE FINISH FLOOR ELEVATION IS TO BE FROM 177.0 FT. M.A.S.L.
  12. THE FINISH FLOOR ELEVATION IS TO BE FROM 177.0 FT. M.A.S.L.
  13. THE FINISH FLOOR ELEVATION IS TO BE FROM 177.0 FT. M.A.S.L.
  14. THE FINISH FLOOR ELEVATION IS TO BE FROM 177.0 FT. M.A.S.L.
  15. THE FINISH FLOOR ELEVATION IS TO BE FROM 177.0 FT. M.A.S.L.
  16. THE FINISH FLOOR ELEVATION IS TO BE FROM 177.0 FT. M.A.S.L.
  17. THE FINISH FLOOR ELEVATION IS TO BE FROM 177.0 FT. M.A.S.L.
  18. THE FINISH FLOOR ELEVATION IS TO BE FROM 177.0 FT. M.A.S.L.
  19. THE FINISH FLOOR ELEVATION IS TO BE FROM 177.0 FT. M.A.S.L.
  20. THE FINISH FLOOR ELEVATION IS TO BE FROM 177.0 FT. M.A.S.L.



DATE 12/23/06	SCALE 1" = 50'	DRAWN BY MDV	PROJECT GATOR TRACE CONDOMINIUMS PARCELS 3-A(5) AND 3-A(6)
SHEET NO. 1	REVISIONS	DATE	DESCRIPTION
OFF/CPD	1-20-06 REV. SEE PLAN		
	12-01-06 GENERAL SITE PLAN REV.		

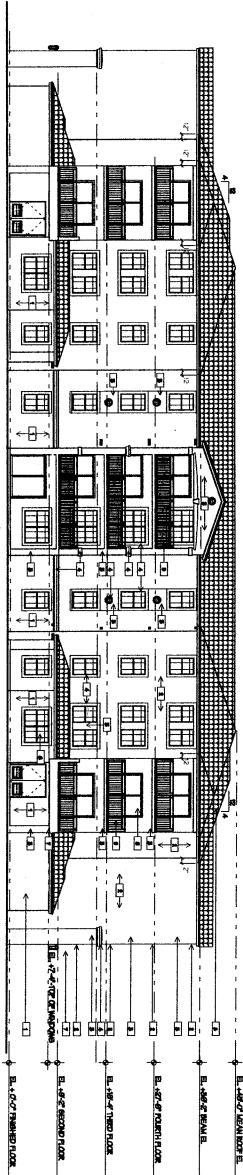
**PROJECT:**  
GATOR TRACE CONDOMINIUMS  
PARCELS 3-A(5) AND 3-A(6)

**DESCRIPTION:**  
CONCEPTUAL PAVING AND DRAINAGE PLAN

**MICHAEL B. SCHORAH & ASSOCIATES, INC.**  
ENGINEERS • DEVELOPMENT CONSULTANTS • PLANNERS

120 S.W. 24th St.  
Tel: (561) 666-0200  
Fax: (561) 666-0708

200 FOREST HILL BLVD.  
WEST PALM BEACH, FLORIDA 33406

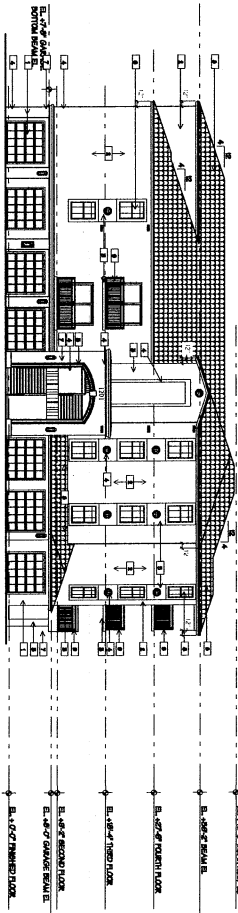


TYPICAL REAR ELEVATION

SCALE 1/8"=1'-0"

TYPICAL 22 UNIT BUILDING

© 2006 MARC WIENER, A.S.A.



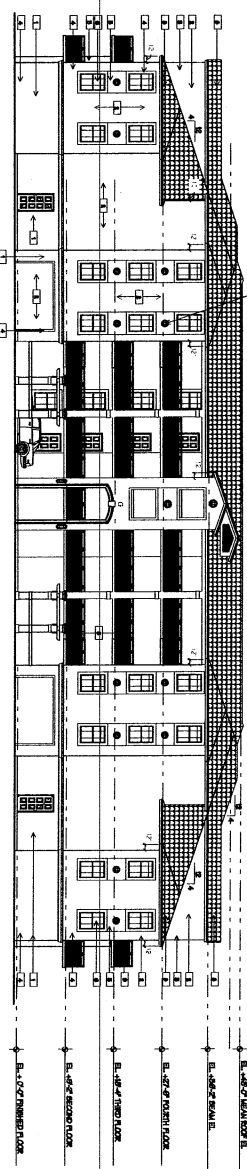
TYPICAL END ELEVATION

SCALE 1/8"=1'-0"

MATERIAL SCHEDULE			
QMS	DESCRIPTION	UNIT	FINISH
0000	CONCRETE	UNIVERSAL	UNIVERSAL
0001	WOOD	UNIVERSAL	UNIVERSAL
0002	PAINT	UNIVERSAL	UNIVERSAL
0003	GLASS	UNIVERSAL	UNIVERSAL
0004	ROOFING	UNIVERSAL	UNIVERSAL
0005	CEILING	UNIVERSAL	UNIVERSAL
0006	FLOORING	UNIVERSAL	UNIVERSAL
0007	MECHANICAL	UNIVERSAL	UNIVERSAL
0008	ELECTRICAL	UNIVERSAL	UNIVERSAL
0009	PLUMBING	UNIVERSAL	UNIVERSAL
0010	FINISHES	UNIVERSAL	UNIVERSAL

TYPICAL FRONT ELEVATION

SCALE 1/8"=1'-0"



LINKSIDE B-1 (BUILT)

AND SOLD OUT



OWNER  
 SYMPHONY BUILDERS  
 1700 UNIVERSITY DRIVE  
 CORAL SPRINGS, FLORIDA

MARC WIENER  
 ARCHITECTURE/PLANNING  
 20 S.W. 4TH STREET SUITE 501  
 BOCA RATON, FLORIDA 33486  
 561-762-4811 FAX 561-762-6886

MARC WIENER, A.S.A.  
 ARCHITECTURE/PLANNING  
 20 S.W. 4TH STREET SUITE 501  
 BOCA RATON, FLORIDA 33486  
 561-762-4811 FAX 561-762-6886

A3.01