

575 Corporate Drive  
Mahwah, New Jersey

2,398 SF - 18,881 SF  
OFFICE | MEDICAL FOR LEASE



## Property Information

Building Size:	144,570 SF
Available Space:	Office   Medical   Warehouse
Ceiling Height:	24' clear throughout
Highway Access:	Easy access to Route 17, US-202, I-287 & I-87
Nearby Amenities:	Retail shops, eateries and more
Transportation:	NJ Transit rail service available from Mahwah station & Short Line Bus offers service to the Port Authority Bus Terminal

## Available Units

• Suite 102:	Lobby 1	5,939 SF
• Unit 101:	Warehouse	4,346 SF
• Suite 3205:	Lobby 3	2,833 SF
• Suite 4205:	Lobby 4	3,365 SF
• Suite 520:	Lobby 5	2,398 SF

For more information or to schedule a tour:

Jessica Curry, CCIM  
Associate  
201 488 5800 x199  
jcurry@naihanson.com

Andrew Somple, SIOR  
Senior Vice President  
201 488 5800 x151  
asomple@naihanson.com






Darren M. Lizzack, MSRE  
Principal  
201 906 4376  
dlizzack@theclinicalgroup.com

Randy Horning, MSRE, SIOR  
Principal  
201 739 9311  
rhorning@theclinicalgroup.com

**NAI James E. Hanson**  
COMMERCIAL REAL ESTATE SERVICES, WORLDWIDE

The **CLINICAL**  
Group

 Team  
Lizzack-Horning

FOLLOW US!      | Offices: Teterboro | Parsippany | Allentown • naihanson.com | naisummit.com • Member of NAI Global with 325+ Offices Worldwide

### SERVICES OFFERED

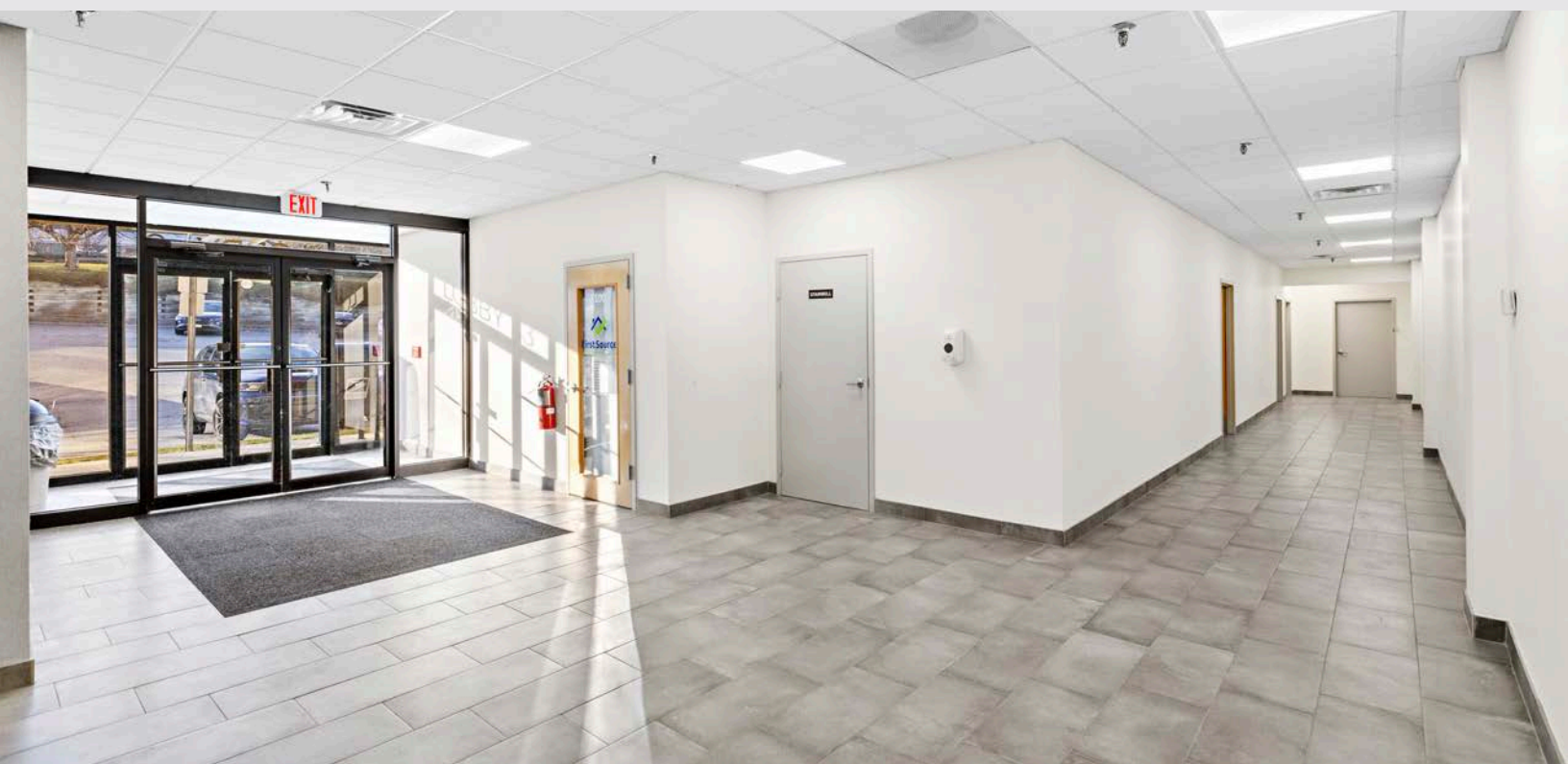
Brokerage • Property Management • Corporate Services • Financing • Tenant Representation • Cold Storage • Investment Services

The information contained herein has been obtained from sources considered to be reliable, but no guarantee of its accuracy is made by NAI James E. Hanson



575 Corporate Drive  
Mahwah, New Jersey

Property  
PHOTOS



**NAI James E. Hanson**  
COMMERCIAL REAL ESTATE SERVICES, WORLDWIDE

**The CLINICAL**  
Group

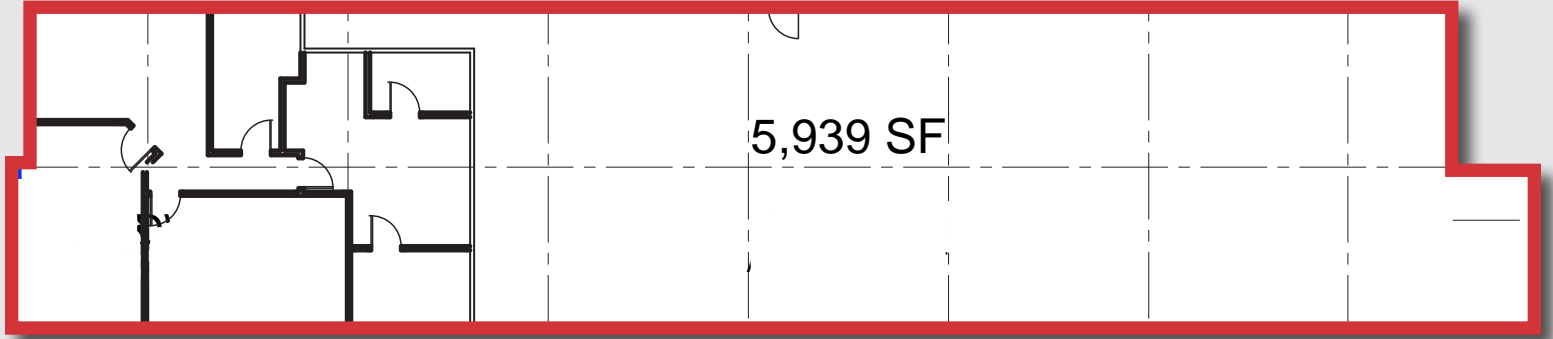
**Team**  
**Lizzack-Horning**

**SERVICES OFFERED**

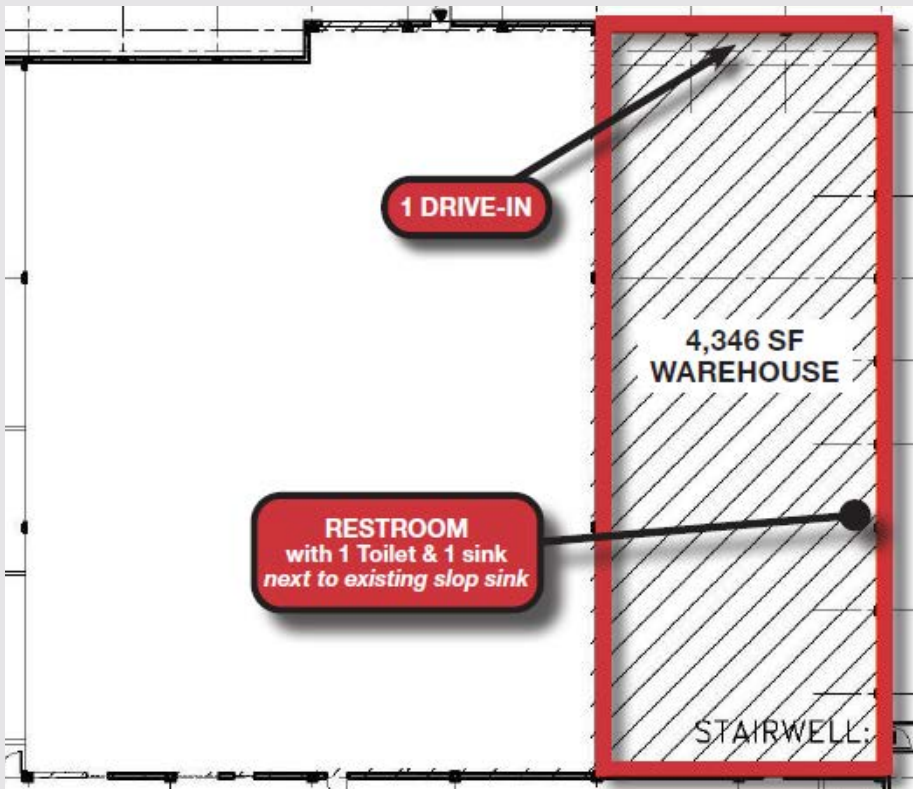
Brokerage • Property Management • Corporate Services • Financing • Tenant Representation • Cold Storage • Investment Services

The information contained herein has been obtained from sources considered to be reliable, but no guarantee of its accuracy is made by NAI James E. Hanson

Suite 102: 5,939 SF OFFICE

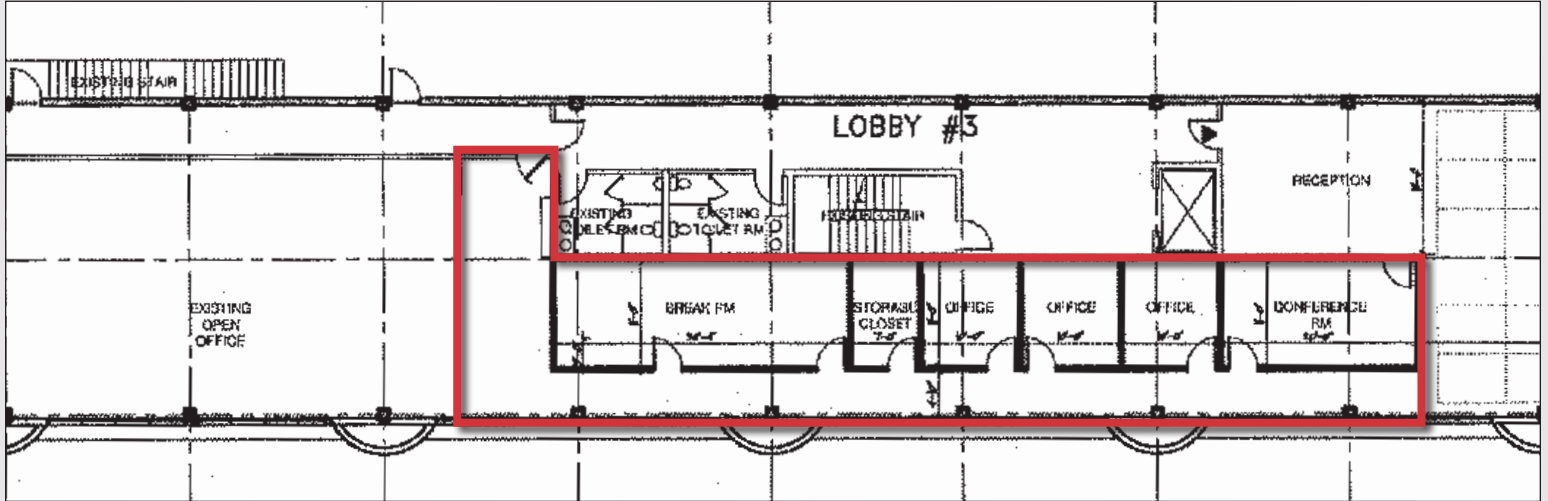


Unit 101: 4,346 SF WAREHOUSE

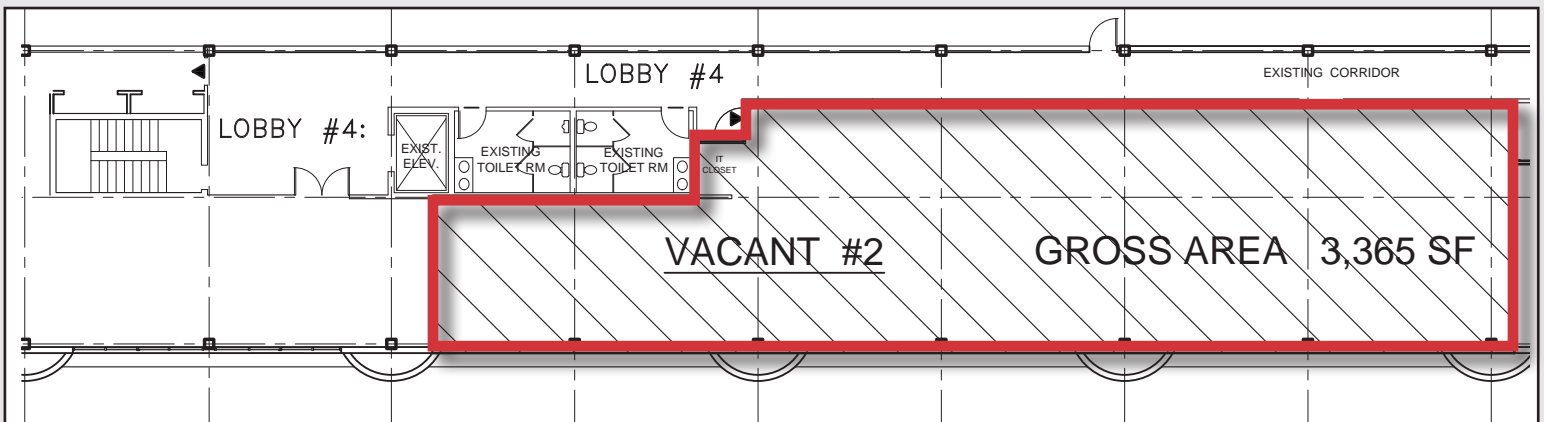




Suite 3205: 2,833 SF OFFICE



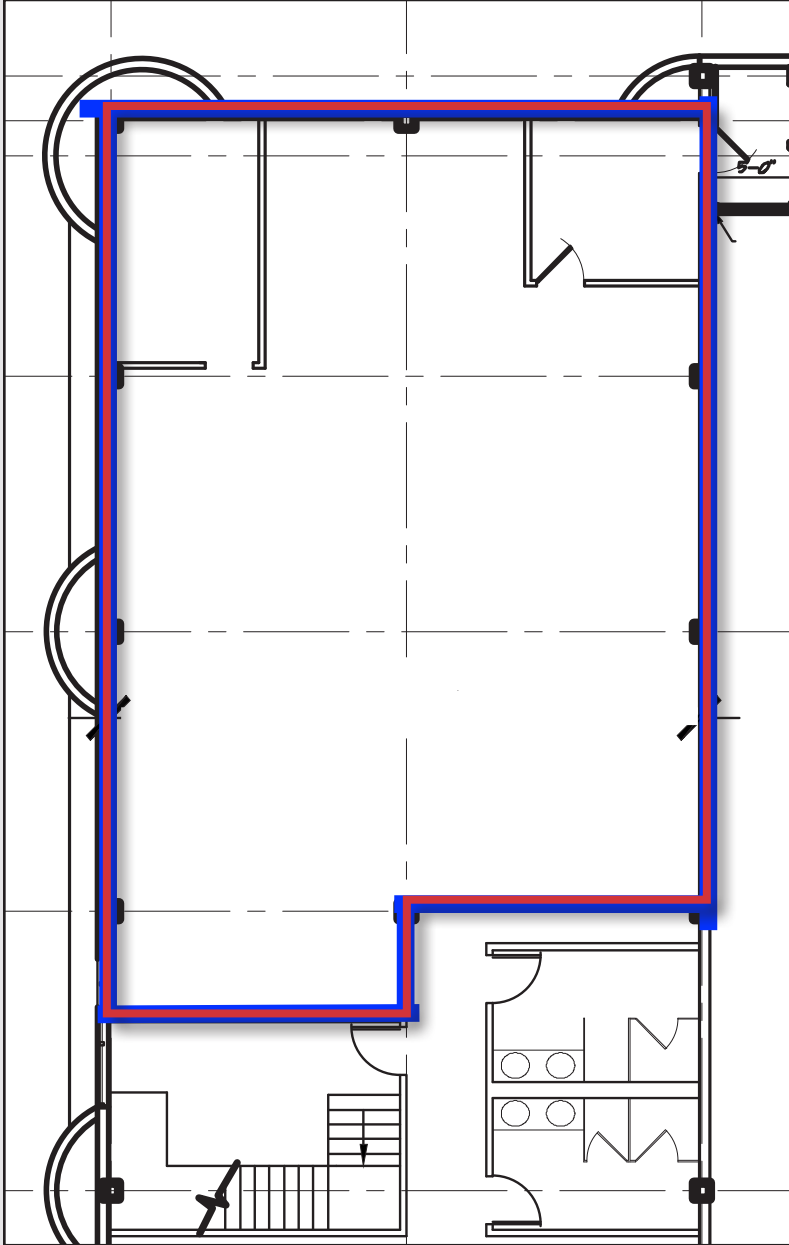
Suite 4205: 3,365 SF OFFICE



575 Corporate Drive  
Mahwah, New Jersey

Floor  
PLANS

Suite 520: 2,398 SF OFFICE



SERVICES OFFERED

Brokerage • Property Management • Corporate Services • Financing • Tenant Representation • Cold Storage • Investment Services

The information contained herein has been obtained from sources considered to be reliable, but no guarantee of its accuracy is made by NAI James E. Hanson



# 575 Corporate Drive Mahwah, New Jersey

# Aerial & MAP



**NAI James E. Hanson**  
COMMERCIAL REAL ESTATE SERVICES, WORLDWIDE

**The CINICAL**  
Group

**Team Lizzack-Horning**

### SERVICES OFFERED

Brokerage • Property Management • Corporate Services • Financing • Tenant Representation • Cold Storage • Investment Services

The information contained herein has been obtained from sources considered to be reliable, but no guarantee of its accuracy is made by NAI James E. Hanson