

AVAILABLE  
FOR LEASE

# 8800 ANTIOCH HILLS MEDICAL BUILDING

8800 W 75TH STREET | MERRIAM, KS 66204



OWNED AND MANAGED BY **welltower**

**CBRE**

[www.cbre.us/kansascity](http://www.cbre.us/kansascity)

**KEITH BAKER, CCIM**

First Vice President  
+1 816 968 5883  
[keith.baker@cbre.com](mailto:keith.baker@cbre.com)

**COLLEEN MCPHERSON ROBLE**

Investment Properties, Healthcare  
+1 816 968 5859  
[colleen.mcpherson@cbre.com](mailto:colleen.mcpherson@cbre.com)

**ELIZABETH TILSON**

Client Service Coordinator  
+1 816 968 5809  
[elizabeth.tilson@cbre.com](mailto:elizabeth.tilson@cbre.com)

**LAUREN STINDT**

Client Service Assistant  
+1 816 968 5853  
[lauren.stindt@cbre.com](mailto:lauren.stindt@cbre.com)



**AVAILABLE SUITES:**

2,058 SF & 7,426 SF

**BUILDING SIZE:**

46,095 SF

**PROPERTY DESCRIPTION:**

- On-Campus Medical Office Building
- Immediate Access to I-35 off 75th Street
- Hospital Campus That Serves All of North Johnson County
- 2,058 SF - First Floor & 7,426 SF - Third Floor
- Join These Specialty Practices:
  - Audiology
  - Eye Care
  - Pediatrics
  - Internal Medicine
  - Orthopaedics

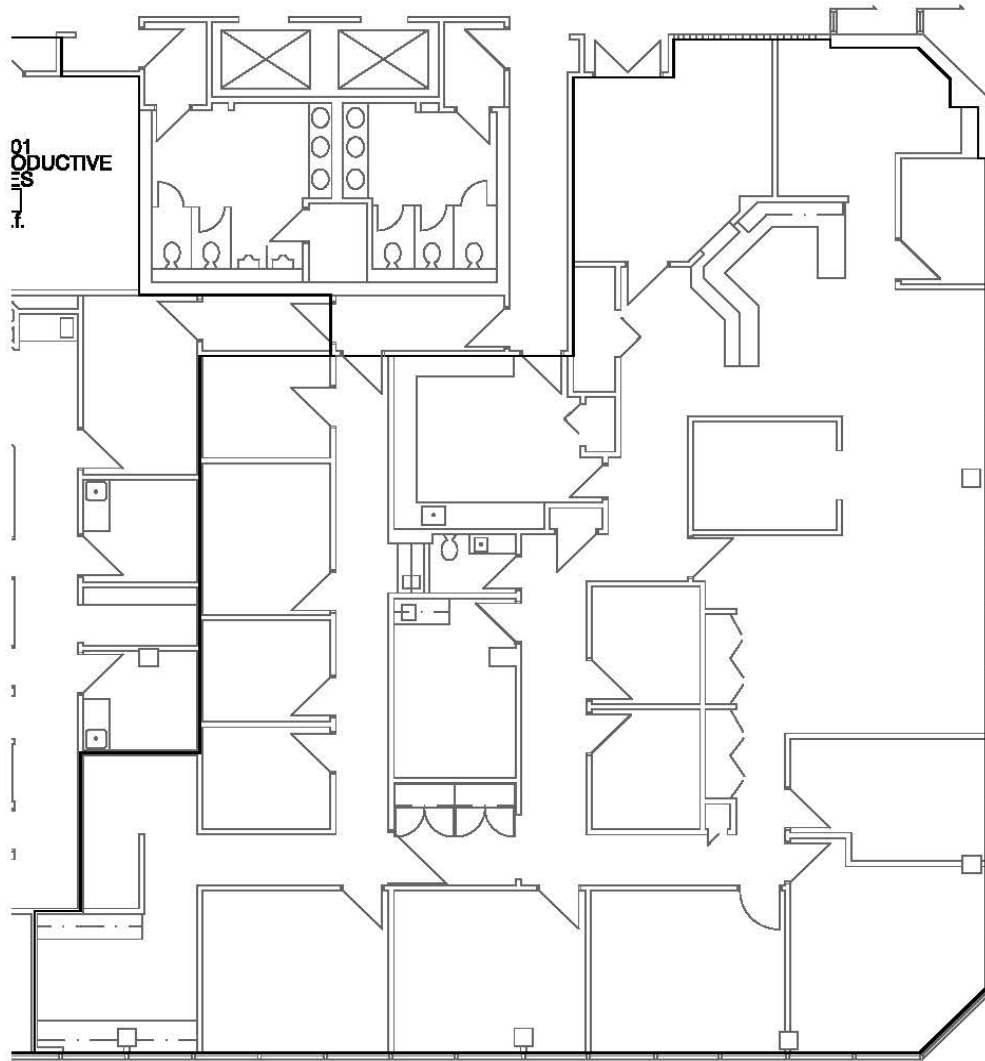


# AERIAL



# FLOOR PLAN

## ANTIOCH HILLS BUILDING - SUITE 100

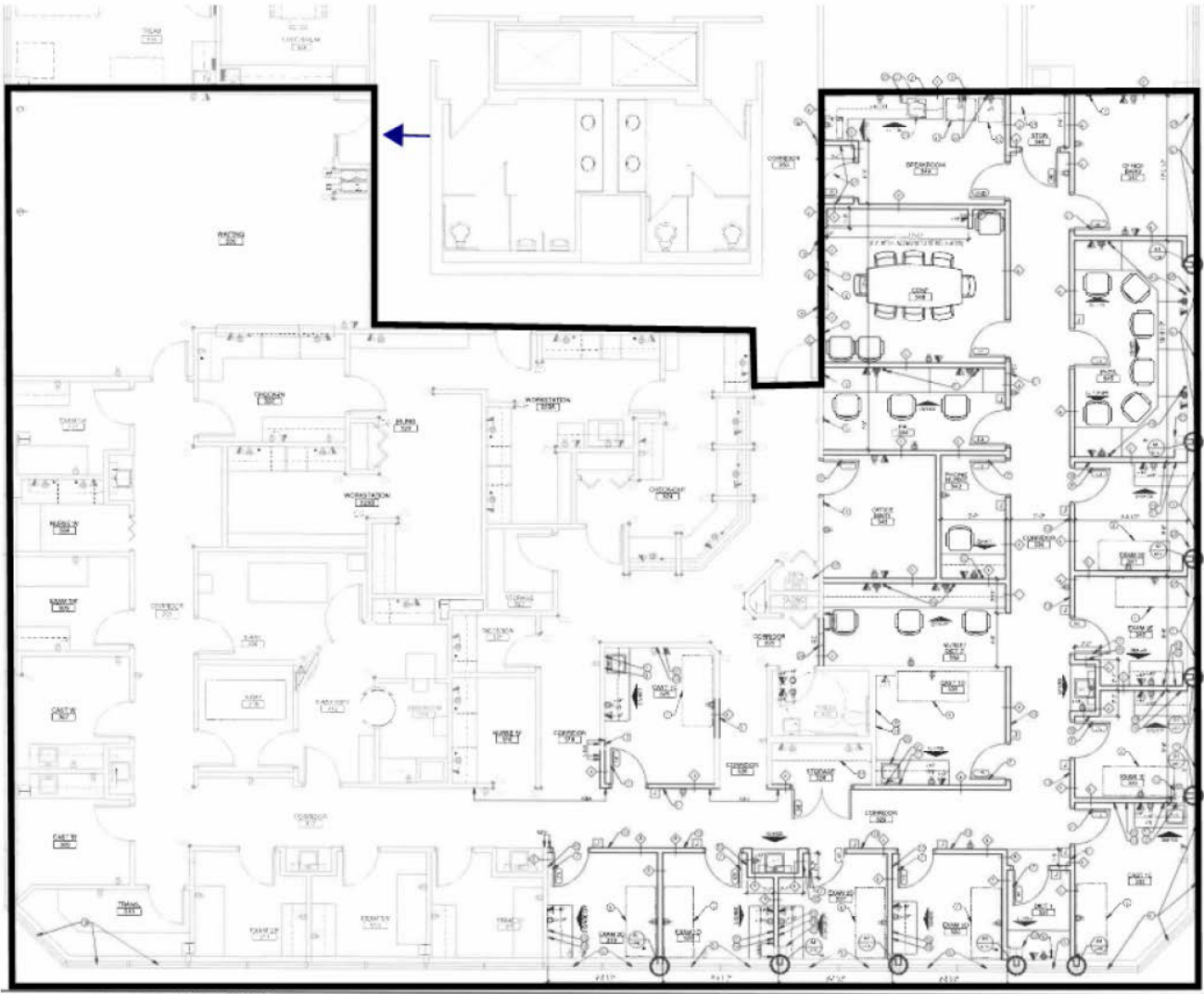


2,058 RSF



# FLOOR PLAN

## ANTIOCH HILLS BUILDING - SUITE 350



**7,426 RSF**

© 2020 CBRE, Inc. All rights reserved. This information has been obtained from sources believed reliable, but has not been verified for accuracy or completeness. You should conduct a careful, independent investigation of the property and verify all information. Any reliance on this information is solely at your own risk. CBRE and the CBRE logo are service marks of CBRE, Inc. All other marks displayed on this document are the property of their respective owners, and the use of such logos does not imply any affiliation with or endorsement of CBRE. Photos herein are the property of their respective owners. Use of these images without the express written consent of the owner is prohibited.

**KEITH BAKER, CCIM**

First Vice President  
+1 816 968 5883  
keith.baker@cbre.com

**COLLEEN MCPHERSON ROBLE**

Investment Properties, Healthcare  
+1 816 968 5859  
colleen.mcpherson@cbre.com

**ELIZABETH TILSON**

Client Service Coordinator  
+1 816 968 5809  
elizabeth.tilson@cbre.com

**LAUREN STINDT**

Client Service Assistant  
+1 816 968 5853  
lauren.stindt@cbre.com