



TRIBECA

NEW YORK  
NY

51  
**MURRAY**  
STREET

RKF

# SPACE DETAILS

## LOCATION

North block between Church Street and West Broadway

## APPROXIMATE SIZE

Ground Floor	1,547 SF
Mezzanine	515 SF
Sub Basement	500 SF
Total	2,562 SF

## FRONTAGE

16 FT on Murray Street

## TERM

Negotiable

## SITE STATUS

Formerly Subway

## POSSESSION

Immediate

## NEIGHBORS

Equinox Fitness Club, Club Pilates, Rosa Mexicano, Whole Foods Market, Target, Vin Sur Vingt, Mulberry and Vine, Juice Press, Los Tacos No. 1 (coming soon), Bluemercury and Korin

## COMMENTS

Clean space with high ceilings and large grandfathered flag signage

HVAC, two walk-in boxes, two bathrooms and grease trap in place

Natural light in the rear of space on the Ground Floor and Mezzanine

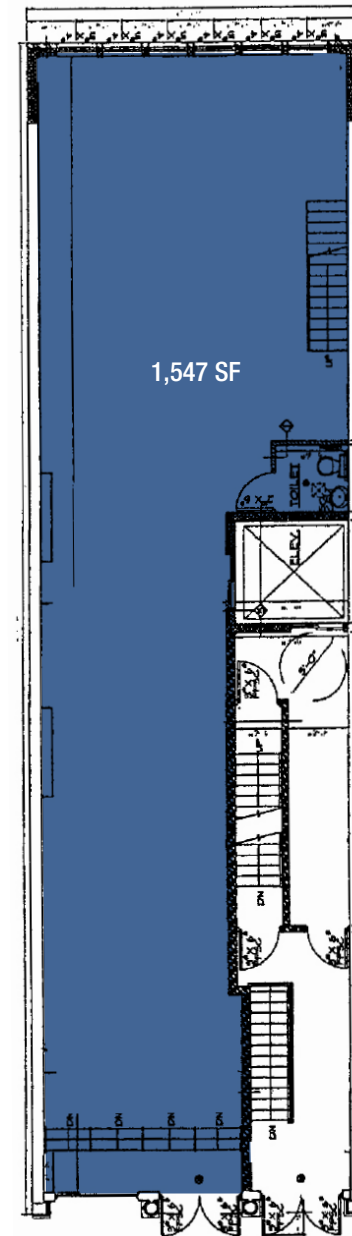
All quality uses considered

Across the street from Equinox Fitness Club and entrance to Tribeca House with 389 apartments

Strong office and residential mix

Three blocks from the World Trade Center, and steps from the **A C E 1 2 3** subway lines

## GROUND FLOOR



16 FT  
MURRAY STREET



# INTERIOR PHOTOS



# AREA RETAIL



51  
**MURRAY**  
STREET  
NEW YORK NY

**CONTACT**  
EXCLUSIVE  
AGENTS

**RAVI IDNANI**  
212.916.2938  
ridnani@rkf.com

**ANDREW STERN**  
212.351.9353  
astern@rkf.com



**521 FIFTH AVENUE**  
**FLOOR 7**  
**NEW YORK, NY 10175**  
212.599.3700  
INFO@RK F.COM  
RK F.COM

© 2019 ROBERT K. FUTTERMAN & ASSOCIATES, LLC  
All information is from sources believed reliable, not independently verified, and thus subject to errors, omissions, and modifications such as price, listing, square footage, rates and commissions. All information, estimates and projections subject to change, market assumptions, unknown facts and conditions, and future potentialities. RK F makes no express or implied representations or warranties, as facts and results may vary materially from all information, estimates and projections.

All renderings presented are conceptual.

COMING SOON