

Wilson Mills Road

1.68 ± Acres - Development Opportunity

Chardon, Ohio 44024 (Geauga County)

*Parcel Lines are Approximate



PRICE REDUCED!!
WAS \$89,000
NOW \$79,000

Wilson Mills Rd., Chardon, OH 44024

Property Details:

100± Foot of Frontage

600± Foot Depth

Water & Sewer at Street

Site Layout and
Office Building Plans Also Available

Zoned C-3 —Traditional Commercial



**Global Real Estate
Advisors Inc.**
Office: 440.255.5552

Nancy Stark Zangerle
Office: 440.255.5552 x.229
Nancy@GlobalCommercialRE.com

Neil Sawicki, SIOR, Broker
Office: 440.255.5552 x.221
Neil@GlobalCommercialRE.com



www.GlobalCommercialRE.com

8585 East Ave., Mentor, Ohio 44060

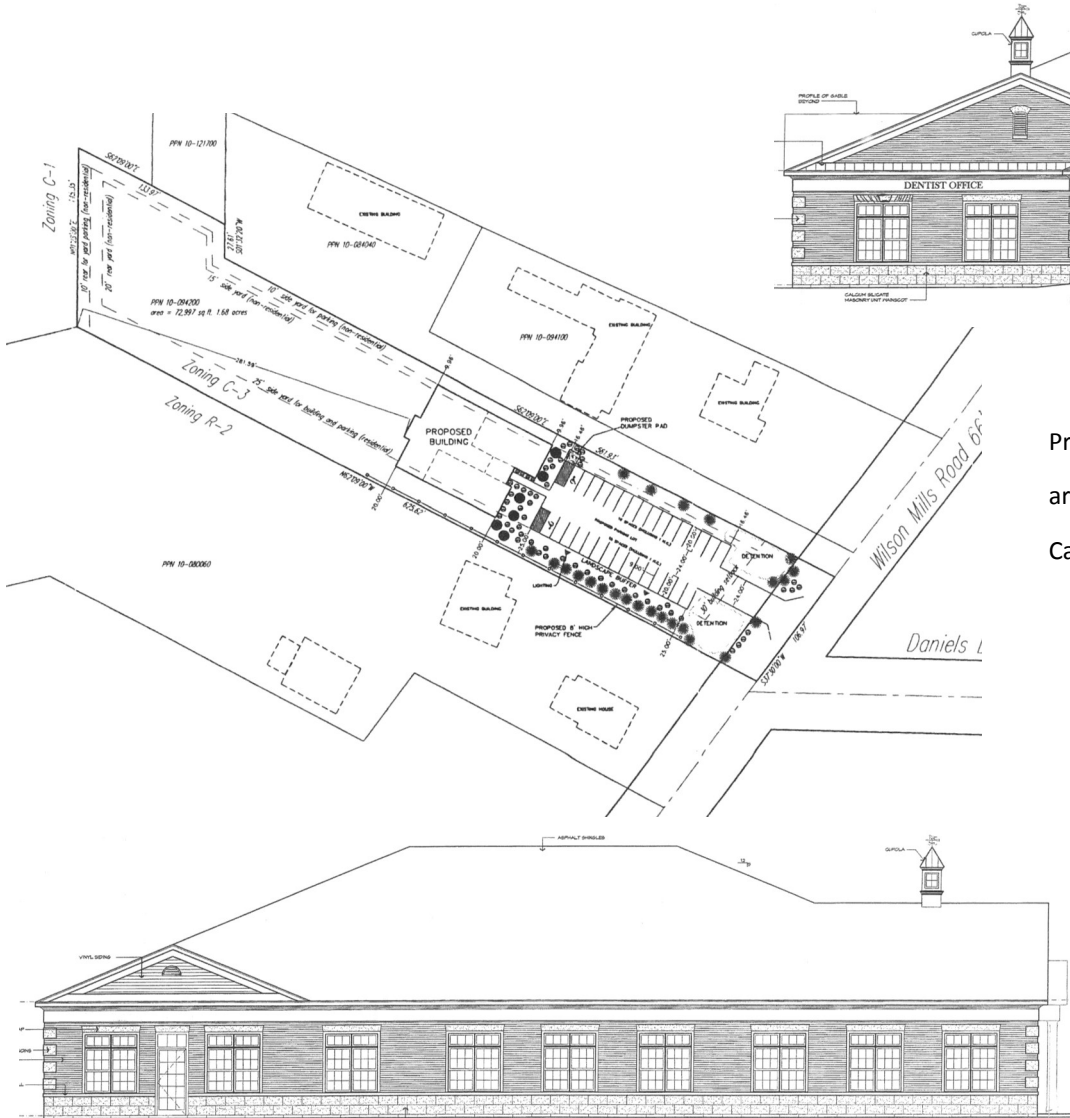
GLOBAL Real Estate Advisors Inc.
Broker

This information has been secured from sources we believe are reliable, but we make no representations or warranties, expressed or implied, as to the accuracy of the information. References to condition, square footage or age are approximate. Buyer or Tenant acknowledges that they are relying on their own investigations and are not relying on Broker provided information. Procuring broker shall only be entitled to a commission, calculated in accordance with the rates approved by our principal only if such procuring broker executes a brokerage agreement acceptable to us and our principal and the conditions as set forth in the brokerage agreement are fully and unconditionally satisfied. Although all information furnished regarding property for sale, rental, or financing is from sources deemed reliable, such information has not been verified and no express representation is made nor is any to be implied as to the accuracy thereof and it is submitted subject to errors, omissions, change of price, rental or other conditions, prior sale, lease or financing, or withdrawal without notice and to any special conditions imposed by our principal.

Wilson Mills Road

1.68+ Acres - Development Opportunity

Chardon, Ohio 44024 (Geauga County)



Prospective Site Plan and Building Plan are available for this site.
Call for additional information.



www.GlobalCommercialRE.com

8585 East Ave., Mentor, Ohio 44060

GLOBAL Real Estate Advisors Inc. Broker

Global Real Estate
Advisors Inc.
Office: 440.255.5552

Nancy Stark Zangerle
Office: 440.255.5552 x.229
Nancy@GlobalCommercialRE.com

Neil Sawicki, SIOR, Broker
Office: 440.255.5552 x.221
Neil@GlobalCommercialRE.com

This information has been secured from sources we believe are reliable, but we make no representations or warranties, expressed or implied, as to the accuracy of the information. References to condition, square footage or age are approximate. Buyer or Tenant acknowledges that they are relying on their own investigations and are not relying on Broker provided information. Procuring broker shall only be entitled to a commission, calculated in accordance with the rates approved by our principal only if such procuring broker executes a brokerage agreement acceptable to us and our principal and the conditions as set forth in the brokerage agreement are fully and unconditionally satisfied. Although all information furnished regarding property for sale, rental, or financing is from sources deemed reliable, such information has not been verified and no express representation is made nor is any to be implied as to the accuracy thereof and it is submitted subject to errors, omissions, change of price, rental or other conditions, prior sale, lease or financing, or withdrawal without notice and to any special conditions imposed by our principal.