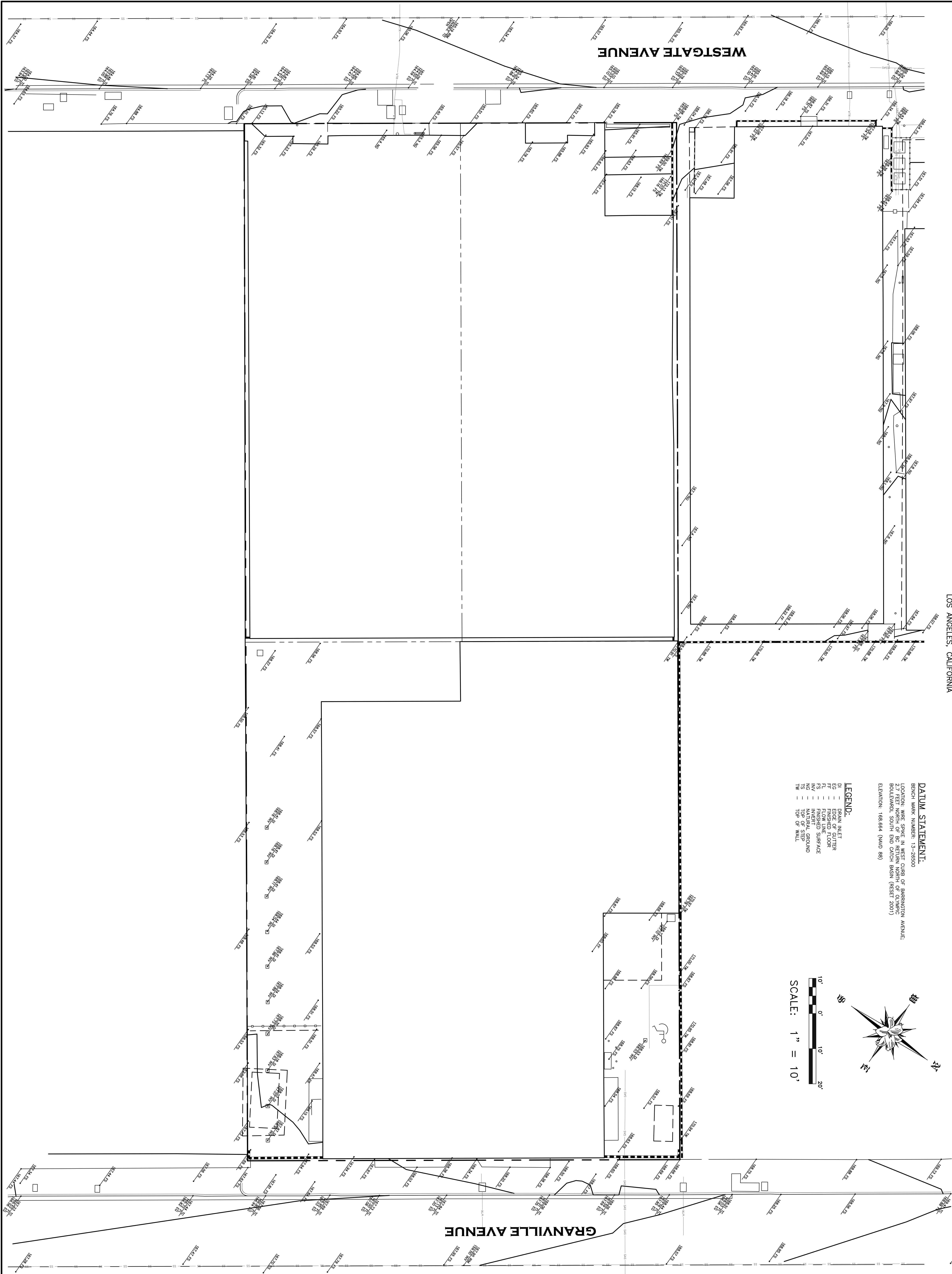
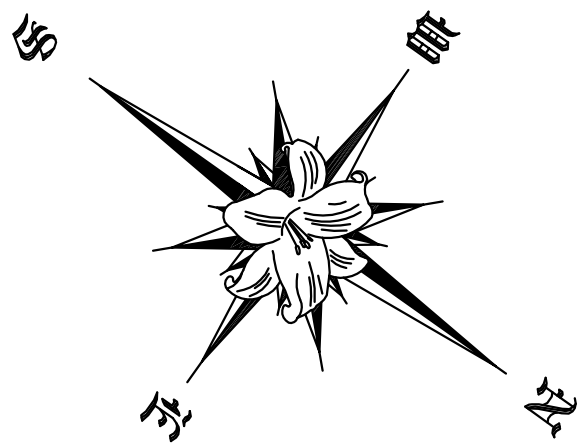


TOPOGRAPHIC SURVEY
2035 GRANVILLE AVE. & 2030 WESTGATE AVE.
LOS ANGELES, CALIFORNIA



DATUM STATEMENT:
BENCH MARK NUMBER: 13-28500
LOCATION: WIRE SPIKE IN WEST CURB OF BARRINGTON AVENUE;
2.7 FEET NORTH OF BC RETURN NORTH OF OLYMPIC
BOULEVARD, SOUTH END CATCH BASIN (RESET 2007)
ELEVATION: 168.664 (NAD 83)

LEGEND:
DI - DRAIN INLET
EG - EDGE OF GUTTER
FL - FLOW LINE
FS - FINISHED SURFACE
NG - NATURAL GROUND
TS - TOP OF STEP
TW - TOP OF WALL



SCALE: 1" = 10'

SHEET OF	2 3	SCALE: 1" = 20' DATE: 06/23/21		TOPOGRAPHIC SURVEY		JRN CIVIL ENGINEERS		REVISIONS	
FILE NO. 20157	DRAWN BY: JFC		ADDRESS: 2035 GRANVILLE AVE. & 2030 WESTGATE AVE. LOS ANGELES, CALIFORNIA	PHONE (949) 248-4685 FAX (949) 248-4687	232 AVENIDA FABRICANTE, STE. 107 SAN CLEMENTE, CALIFORNIA 92672	PROJECT COORDINATOR: JON CRAWLEY (JCRAWLEY@JRN.CIVIL.COM)			
	CHKD. BY: JRN								