

2409

BROADWAY



NORTHWEST CORNER OF 88TH & BROADWAY
UPPER WEST SIDE



2409

BROADWAY

NORTHWEST CORNER OF 88TH & BROADWAY
UPPER WEST SIDE

PROPERTY HIGHLIGHTS

- Newly white boxed space
- Corner location with great visibility
- 1,500 SF basement with conveyer belt
- Available as a "short term" deal or a New Direct Lease!

SIZE

Ground Floor 7,204 SF
+ Lower Level 1,495 SF

FRONTAGE

100'

CEILINGS

12'

ASKING RENT

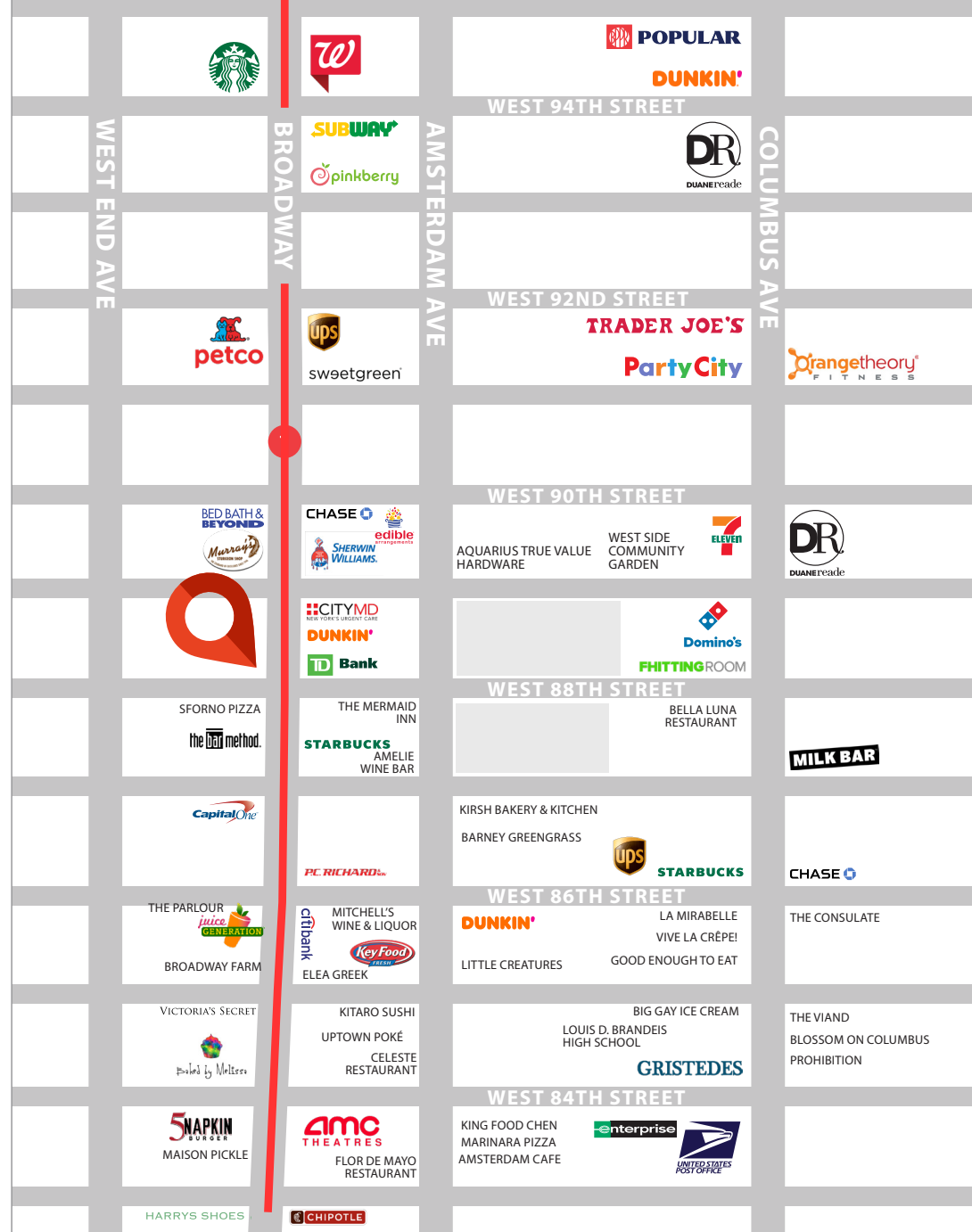
Upon Request

POSSESSION

Immediate

TRANSPORTATION

1 2 3



CONTACT OUR BROKERS FOR MORE INFORMATION

SAM CHERA
SChera@ksrny.com
718.614.1731

SOLOMON SHARABY
SSharaby@ksrny.com
718.986.7149



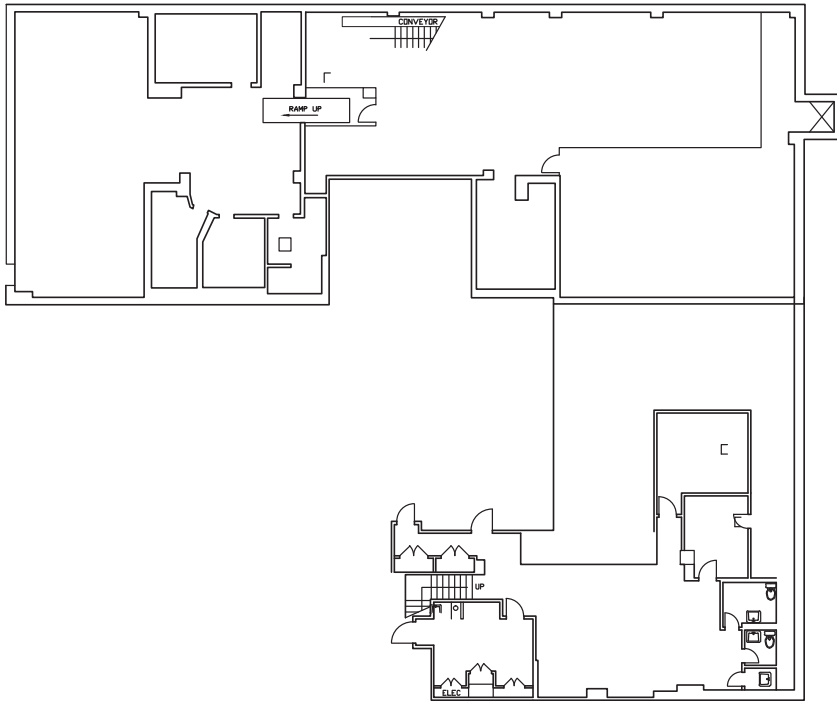
All information supplied in this marketing presentation and/or flyer is from sources deemed reliable and is furnished subject to errors, omissions, modifications, removal of listings from sale/lease and to any listing condition. Any square footage, dimensions, floor plans and/or technical data set forth are approximations and are subject to further elaboration/confirmation.

2409

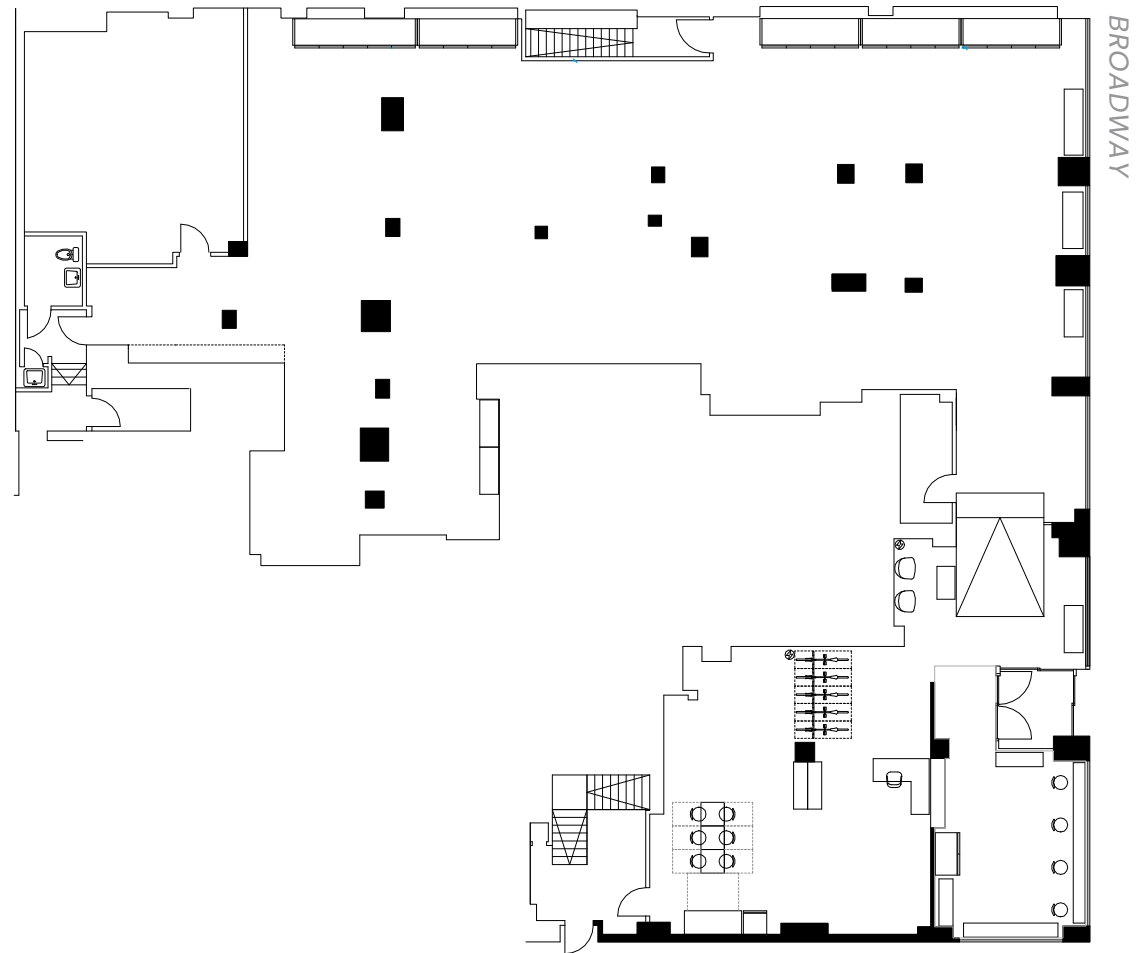
BROADWAY

NORTHWEST CORNER OF 88TH STREET & BROADWAY
UPPER WEST SIDE

LOWER LEVEL



GROUND FLOOR



WEST 88TH STREET

CONTACT OUR BROKERS FOR MORE INFORMATION

SAM CHERA
SChera@ksrny.com

718.614.1731

SOLOMON SHARABY
SSharaby@ksrny.com

718.986.7149



All information supplied in this marketing presentation and/or flyer is from sources deemed reliable and is furnished subject to errors, omissions, modifications, removal of listings from sale/lease and to any listing condition. Any square footage, dimensions, floor plans and/or technical data set forth are approximations and are subject to further elaboration/confirmation.