

▶ Executive Office Building

For Sale \$1,573,375

5732 NW 135th St.

Oklahoma City, OK 73142

*Exceptional
Location*

*Seller
Incentives
Available*

Property Information:

- 7,675 sf MOL (1st Floor 5,175 sf & 2nd Floor 2,500 sf)
- \$1,573,375 (\$205 psf)
- 15,961 sf lot
- New construction
- Executive office building with exceptional quality finishes

Property Highlights:

- Just South of Kilpatrick Turnpike off N. MacArthur Blvd. – rapid access to everything
- Well landscaped and maintained
- Combination stone, wood & carpet flooring

Elegant Entrance & Spacious Parking



*Great views & contemporary
light fixtures*



*Variety of office
sizes available*



*Open kitchen with
great storage*

Contact: Rod Baker, CCIM • bakerr@bakerfirst.com • Office: 405.947.7200 • Cell: 405.818.2800



BAKERfirst
COMMERCIAL REAL ESTATE

bakerfirst.com

2800 NW 36th St. • Oklahoma City, OK 73112

**5732 NW 135th St.
Oklahoma City, OK 73142
For Sale \$1,573,375**



Spacious 2 Stories



Secondary Entrance & Plenty of Parking



Conveniently located near Memorial and N. MacArthur Blvd.



Elegant Entrance with Room for Signage



Stylish Design



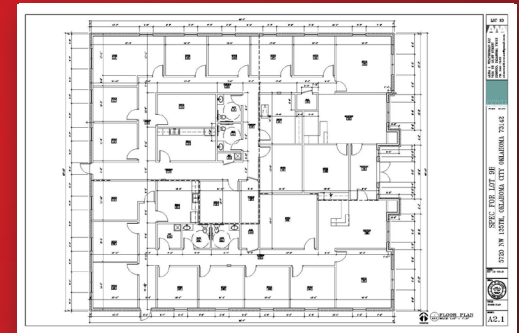
Exceptional Quality Finishes



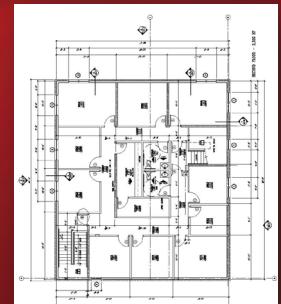
Kitchen & Storage

Additional Property Highlights:

- 2 stories
- New construction
- Ample parking
- Adjacent to restaurants, services, banking, medical & more
- Highest quality finishes
- Pre-wired and ready for occupancy
- Seller incentives available



- Duplex configuration with separate entrances



Call to Set Up Your Showing Today!

All offerings subject to change, sale, lease or withdrawal without prior notice. Details believed to be accurate at time of print.

Contact: Rod Baker, CCIM • bakerr@bakerfirst.com • Office: 405.947.7200 • Cell: 405.818.2800



BAKERfirst
COMMERCIAL REAL ESTATE

bakerfirst.com

2800 NW 36th St. • Oklahoma City, OK 73112