

The Royal Exchange, EC3

1st Floor - 6,358 sq ft

Offices to Let – Fully Fitted

SUBJECT TO CONTRACT

Location

The Royal Exchange is located in a prominent position, opposite the Bank of England.

The building benefits from excellent communication links with Moorgate, Liverpool Street, Cannon Street, St Pauls and Bank stations in close proximity, providing access to London via overground services, a wide range of underground lines and importantly, close proximity to the Elizabeth Line (Crossrail) due to open in 2020.

Description

A grade I listed landmark office building with a mixture of retail and offices.

The unit is available as fully fitted offices.

Amenities

- 56 open plan fitted desks
- 6 meeting rooms
- Excellent floor to ceiling heights
- Air conditioning
- Reception
- Royal Exchange retail amenities
- Outlook onto Bank of England and Royal Exchange shopping
- Shower facilities

Viewing

Viewing strictly by appointment through sole agents Cushman & Wakefield.

Lease

Available by way of a sublease until July 2022



Costs	Per sq ft exclusive
Guiding Rent	£52.50
Rates	£18.87
Service Charge	£13.50

Floors	Area (sq ft)	Area (sq m)
1 st	6,358	590
TOTAL	6,358	590

* Floor areas subject to verification.



**CUSHMAN &
WAKEFIELD**

The Royal Exchange, EC3

1st Floor - 6,358 sq ft

Offices to Let – Fully Fitted

For more information, contact:

Tom Fayers

+44 (0) 20 3296 4226

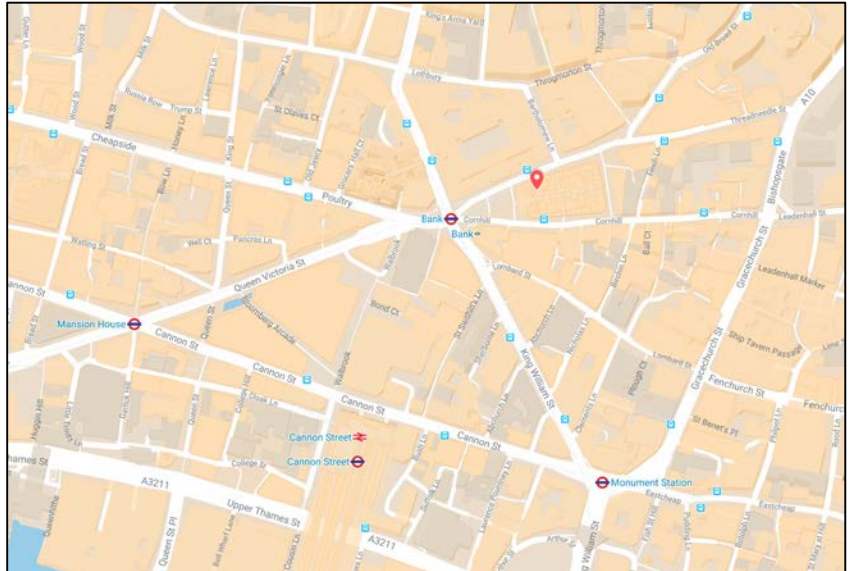
tom.fayers@cushwake.com

George Homer

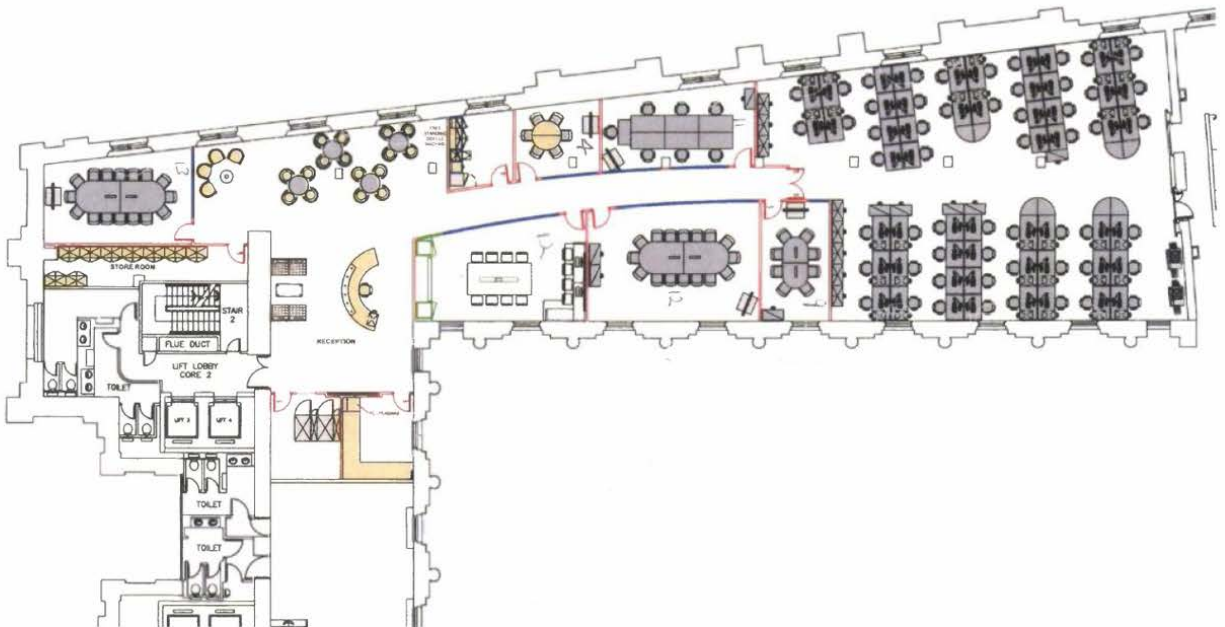
+44 (0) 20 3296 3160

George.homer@cushwake.com

Location



1st Floor Plan



cushmanwakefield.com

Cushman & Wakefield copyright 2018. No warranty or representation, express or implied, is made to the accuracy or completeness of the information contained herein, and same is submitted subject to errors, omissions, change of price, rental or other conditions, withdrawal without notice, and to any special listing conditions imposed by the property owner(s). As applicable, we make no representation as to the condition of the property (or properties) in question.