

FOR LEASE

233 PEARL ST

Somerville, MA 02145



PROPERTY DESCRIPTION

3,700 ± Sq ft commercial space in Somerville's Winter Hill neighborhood. Mostly open concept w/ two 9 foot drive-in doors at front and rear of the building. Conveniently located off Route 28 w/ easy access to I-93.

PROPERTY HIGHLIGHTS

- 1st floor: 10-foot ceilings / 3 bathrooms / 2,600 SF
- 2nd floor: 7.5 FT ceilings / 1,100 SF

OFFERING SUMMARY

| | |
|---------------|---------------------------|
| Lease Rate: | \$3,000.00 per month (MG) |
| Available SF: | 3,700 SF |
| Zoning: | UR |

| DEMOGRAPHICS | 0.5 MILES | 1 MILE | 1.5 MILES |
|-------------------|-----------|----------|-----------|
| Total Households | 7,505 | 23,429 | 49,347 |
| Total Population | 17,246 | 54,345 | 113,914 |
| Average HH Income | \$69,222 | \$69,300 | \$76,043 |

Albert Bouchie
617 908 6775

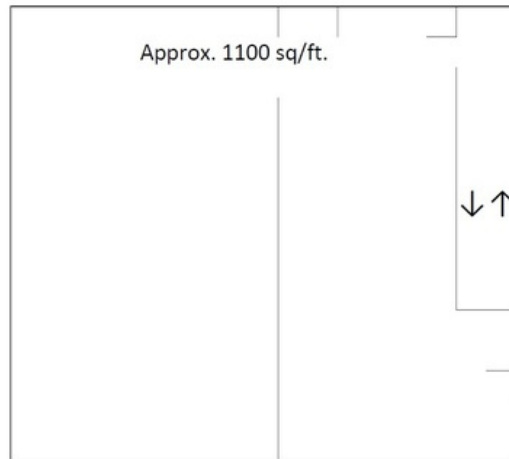
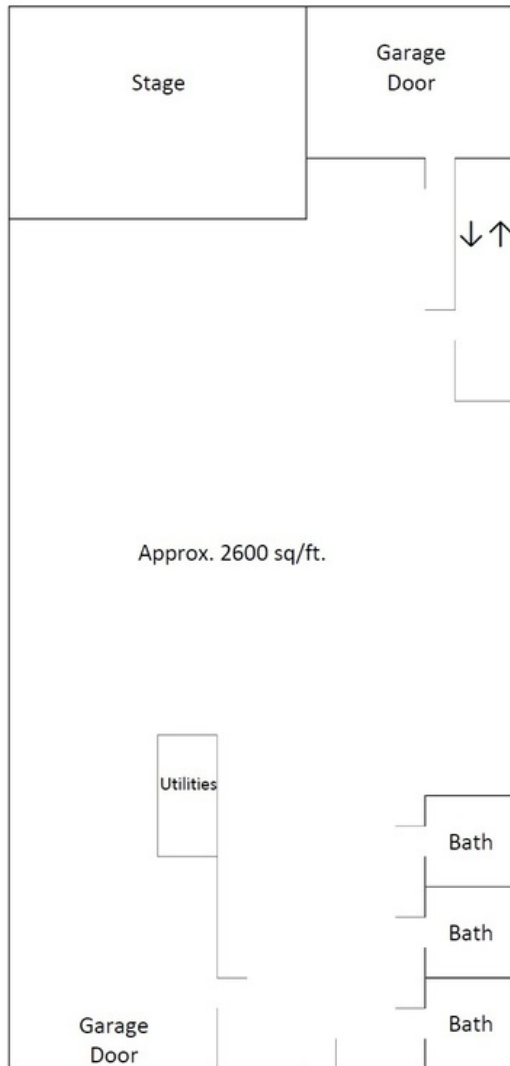
Ashley Morris
617 879 8974



COLDWELL BANKER
COMMERCIAL
REALTY

233 PEARL ST

Somerville, MA 02145



Albert Bouchie
617 908 6775

Ashley Morris
617 879 8974



COLDWELL BANKER
COMMERCIAL
REALTY