

**485 HURFFVILLE CROSSKEYS
ROAD, SEWELL, NJ**

DETAILED FLOOR PLANS •



ROOMINDERS • REAL ESTATE MARKETING

p 856.429.4233

web - www.roominders.com

f 856.429.8118

e jon@roominders.com

measured by Jon Hitchner 7.25.18

Revised -

* Actual measurements may vary

* Not to be used for construction purposes

* Position of walls and fixtures are approximate

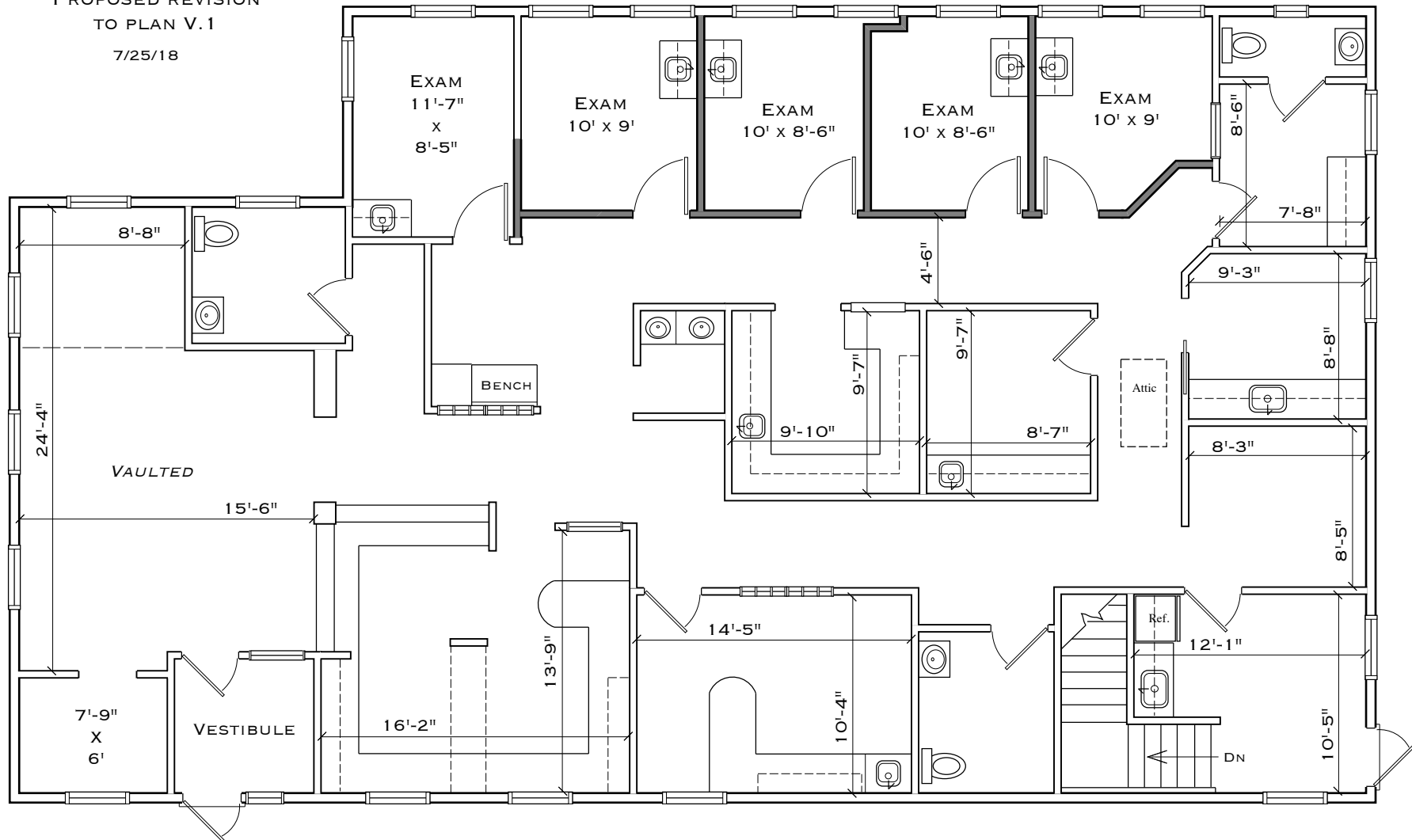
* Only to be used with written permission

APPROXIMATE
SQUARE FEET

5,010

(INCLUDES
LOWER LEVEL
2,180 SQ. FT.)

PROPOSED REVISION
TO PLAN V.1
7/25/18



**FIRST FLOOR
2,830 SQ. FT.**