

FOR SALE > INDUSTRIAL BUILDINGS

16002 W 110th Street

LENEXA, KANSAS



Building 1

- > Total Building Area: 100,000± SF
- > Office Area: 18,000± SF (2nd level)
- > Year Built: 1979
- > Land Area: 6.00 acres
- > Construction: exposed aggregate concrete tilt up (office and warehouse lower); metal (warehouse upper)
- > Clear Height: 21' in main warehouse; 9' under 2nd level office
- > Loading: 9 - (8'x 10') dock-high doors (7 with pit levelers); 1 - (12'x 18') interior dock well (with pit leveler); 1 - (22'x 14') drive-in door
- > Column Spacing: 40'x 50'
- > Parking: 124 plus additional land area
- > Lighting: T5 and fluorescent strip
- > Sprinkler System: wet system; 0.43 gpm over 2,000 SF
- > Roof: standing seam metal
- > Electric: heavy
- > Zoning: BP2
- > Location: Central Johnson County with easy access to I-435 and I-35
- > Taxes: \$146,083
- > Sale Price: \$6,050,000 (both buildings)

Building 2

- > Total Building Area: 19,920 SF
- > Office Area: none
- > Year Built: 2015
- > Construction Type: pre-engineered metal
- > Clear Height: 21' - 23'
- > Loading: 1 - (22'x 16') drive-in
- > Lighting: T5
- > Column Spacing: 30'x 55'4"
- > Building Dimension: 120'x 166'
- > Sprinkler: none (fire line provided to building)
- > Roof: standing seam metal
- > Electrical: 400 amps / 3phase

JOHN STAFFORD SIOR
+1 816 556 1184
KANSAS CITY, MO
john.stafford@colliers.com

COLLIERS INTERNATIONAL
4520 Main Street, Suite 1000
Kansas City, MO 64111
www.colliers.com

16002 W 110th Street, Lenexa, Kansas > Photographs



WEST SIDE



STREET VIEW



PRIVATE OFFICE



GLASS OFFICES



BREAK ROOM



TRAINING ROOM



CRANE BRIDGE SYSTEM



DOCK WELL



DOCKS



WAREHOUSE OFFICE & BREAKROOM



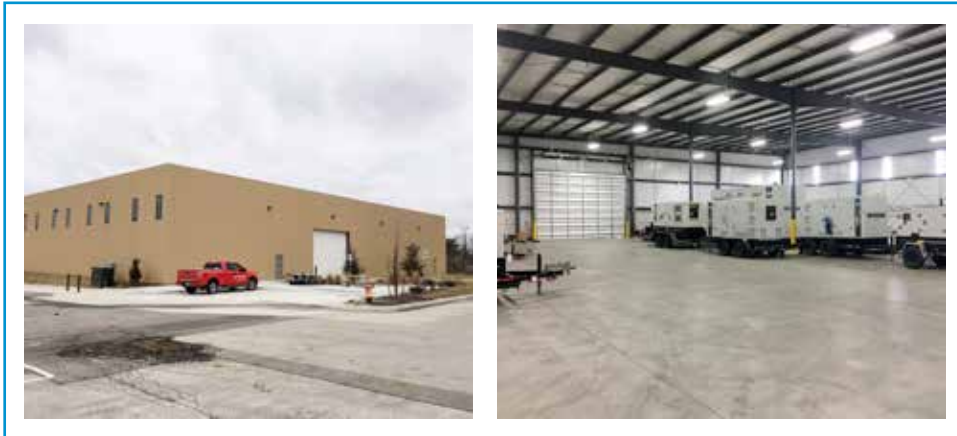
WAREHOUSE RACKING



WAREHOUSE UNDER 2ND LEVEL

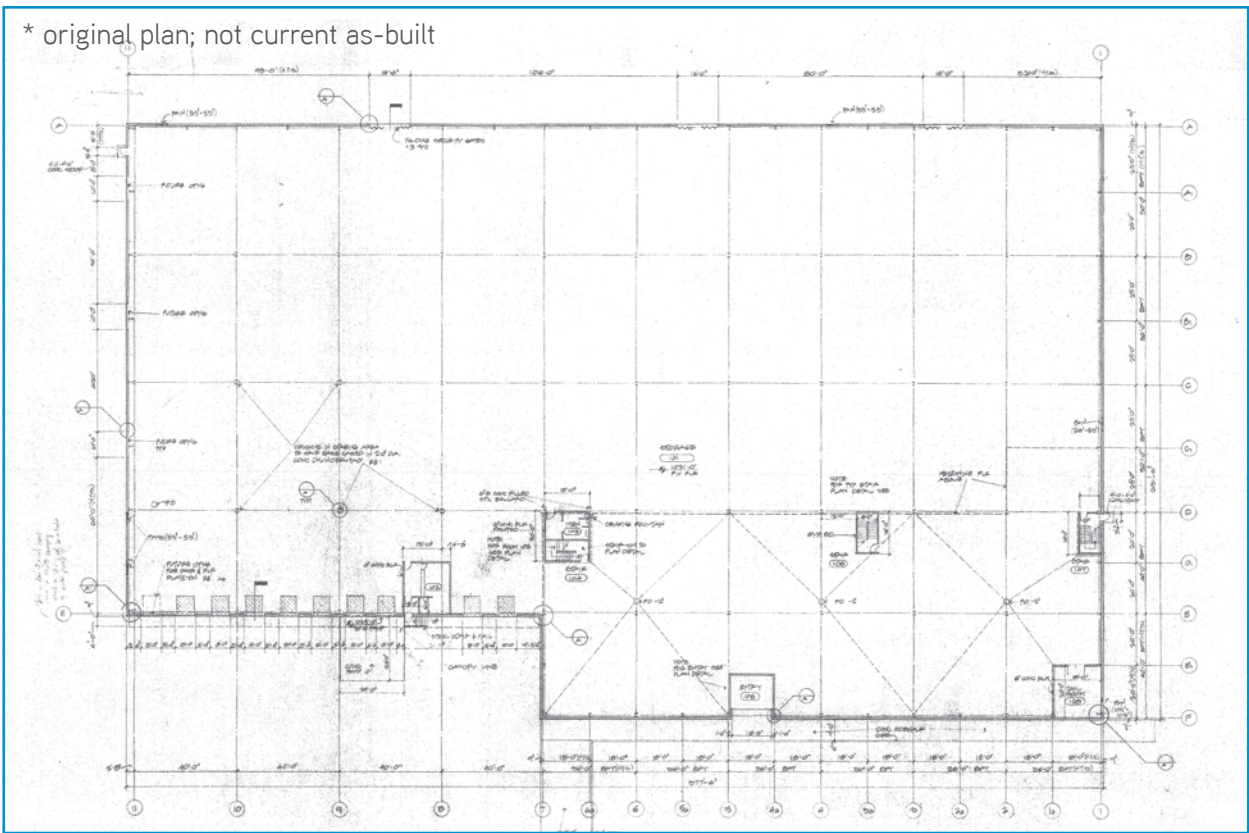


BUILDING 2

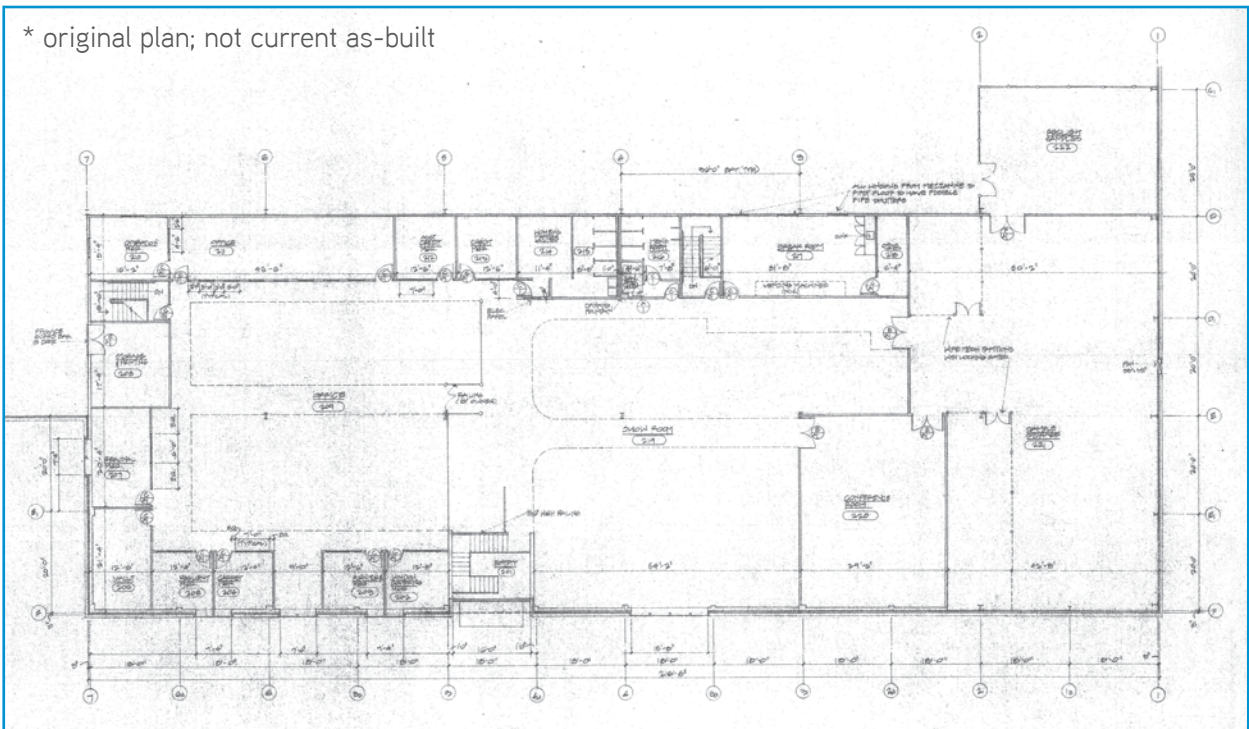


16002 W 110th Street, Lenexa, Kansas > Floor Plans

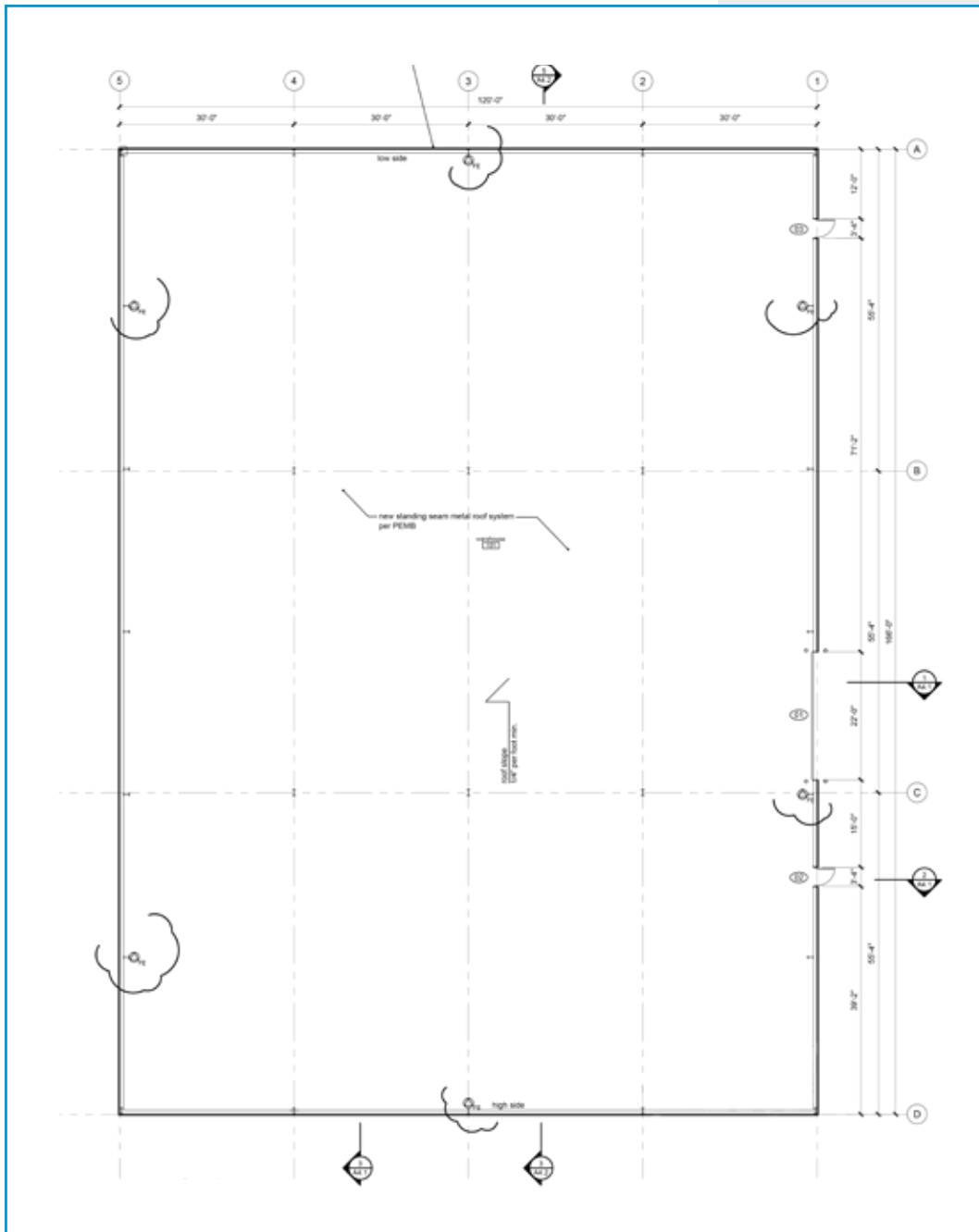
MAIN BUILDING > 1ST FLOOR PLAN



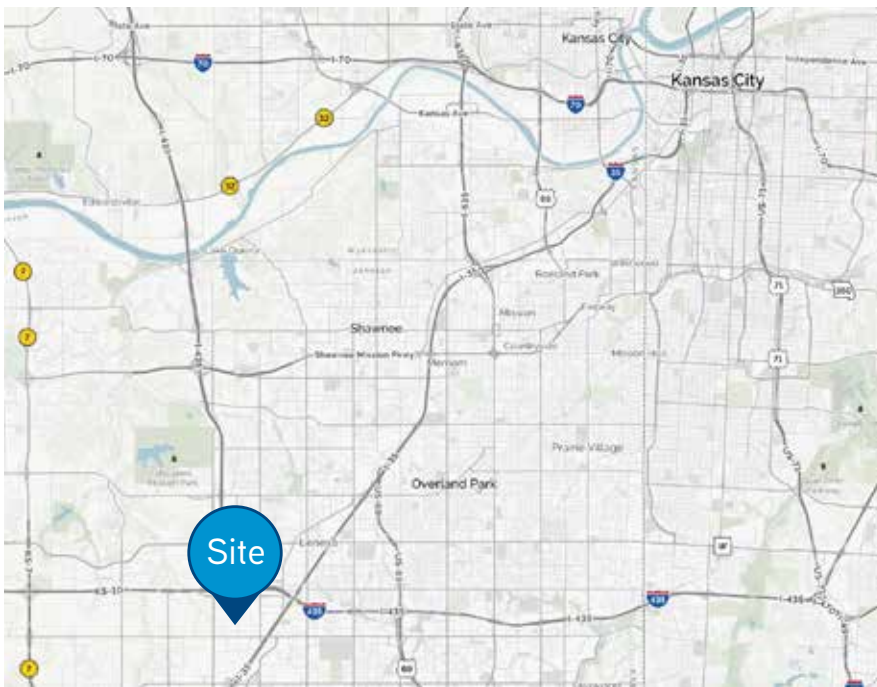
MAIN BUILDING > 2ND FLOOR PLAN



BUILDING 2 > FLOOR PLAN



16002 W 110th Street, Lenexa, Kansas > Aerial



JOHN STAFFORD SIOR
+1 816 556 1184
KANSAS CITY, MO
john.stafford@colliers.com

COLLIERS INTERNATIONAL
4520 Main Street, Suite 1000
Kansas City, MO 64111
www.colliers.com