

Office Space for Lease

2833 Dowd Drive, Santa Rosa



±1,823 Square Feet Available

I am pleased to offer the following space:

Rental Rate:
\$1.00/psf Gross

Tenant Pays Their Own Gas &
Electric

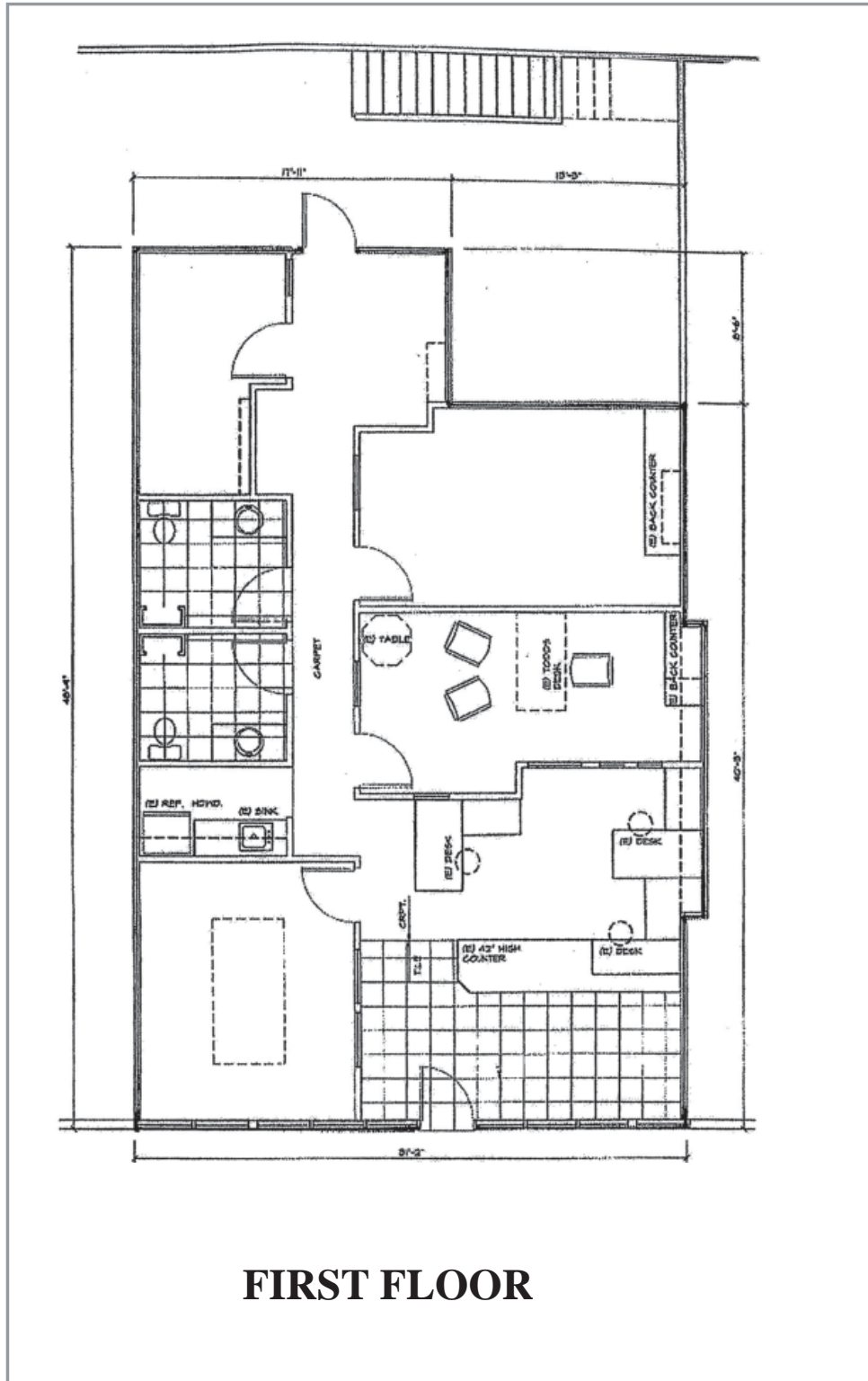
- ◆ Second Floor has Six Private Offices, Conference Room, Two Restrooms
- ◆ Furniture Available at No Extra Charge
- ◆ High Identity Building
- ◆ Great On-Site Parking
- ◆ Located on Dowd Drive behind Auto Row near Mead Clark
- ◆ Easy Access to Highway 101
- ◆ Pride of Ownership Building

Barry Palma, CCIM Sr Vice President 707.583.8410 bpalma@newmarkccarey.com CA RE License #00901364

**Newmark
Cornish & Carey** 2455 Bennett Valley Road, Suite C200, Santa Rosa, CA 95404 T 707.583.8400 www.newmarkccarey.com

Procuring broker shall only be entitled to a commission, calculated in accordance with the rates approved by our principal only if such procuring broker executes a brokerage agreement acceptable to us and our principal and the conditions as set forth in the brokerage agreement are fully and unconditionally satisfied. Although all information furnished regarding property for sale, rental, or financing is from sources deemed reliable, such information has not been verified and no express representation is made nor is any to be implied as to the accuracy thereof and it is submitted subject to errors, omissions, change of price, rental or other conditions, prior sale, lease or financing, or withdrawal without notice and to any special conditions imposed by our principal.

14-0632-04/14

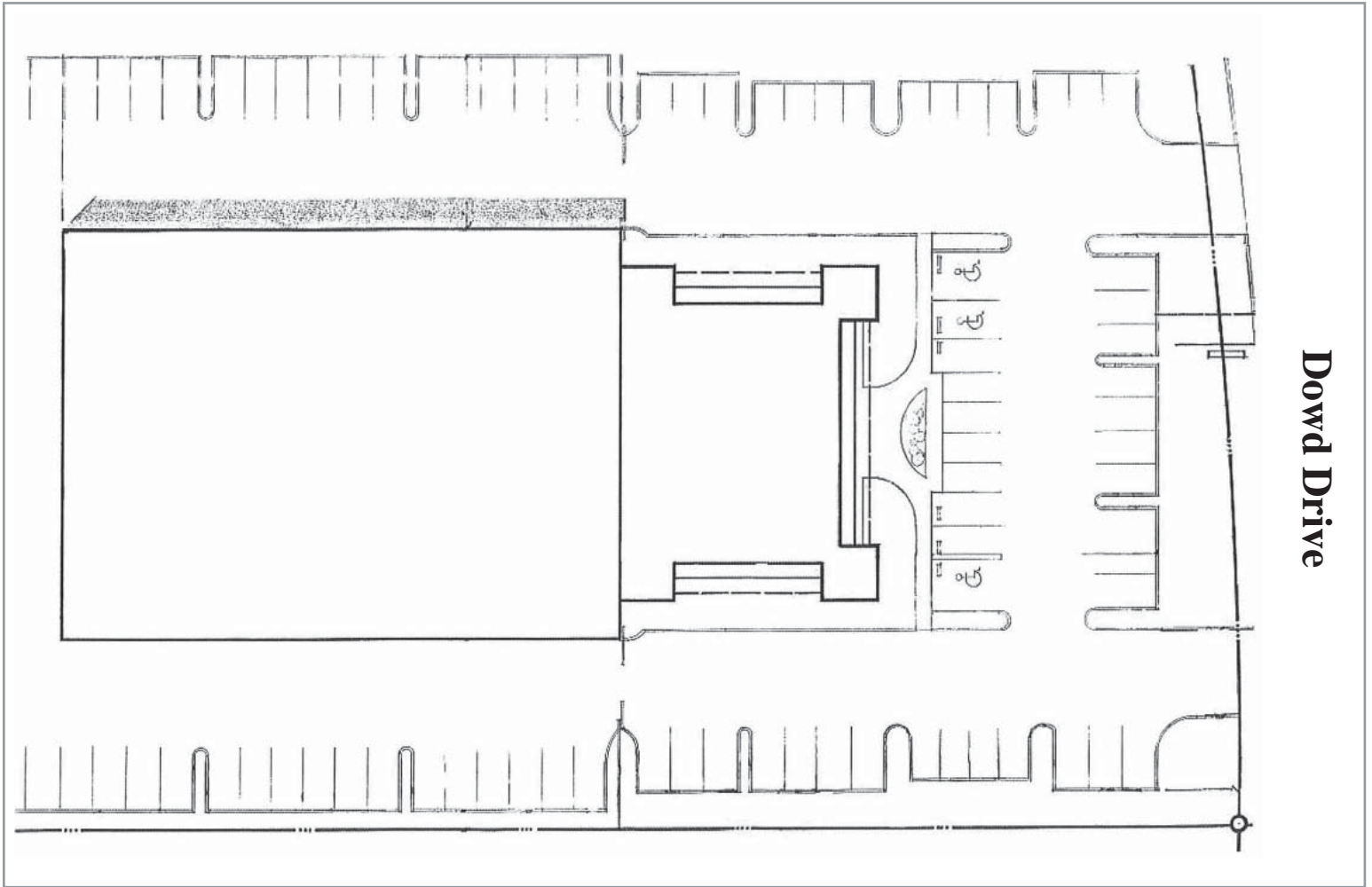


FIRST FLOOR

Barry Palma, CCIM Sr Vice President 707.583.8410 bpalma@newmarkccarey.com CA RE License #00901364

2833 Dowd Drive

Santa Rosa

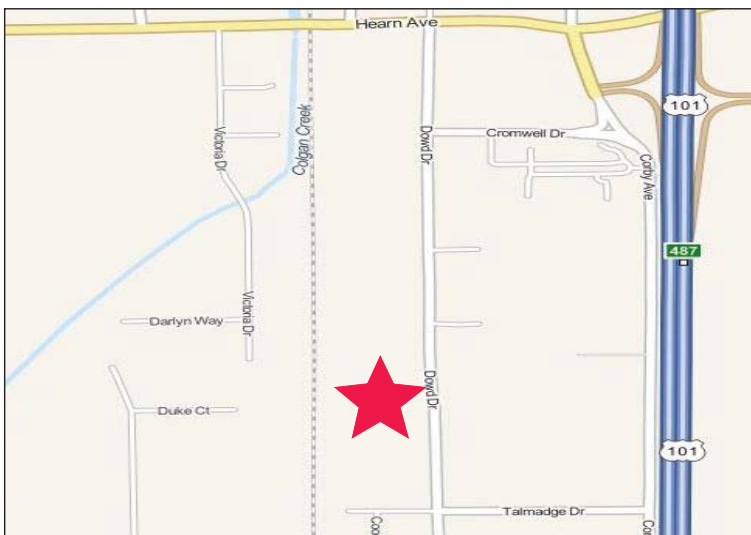
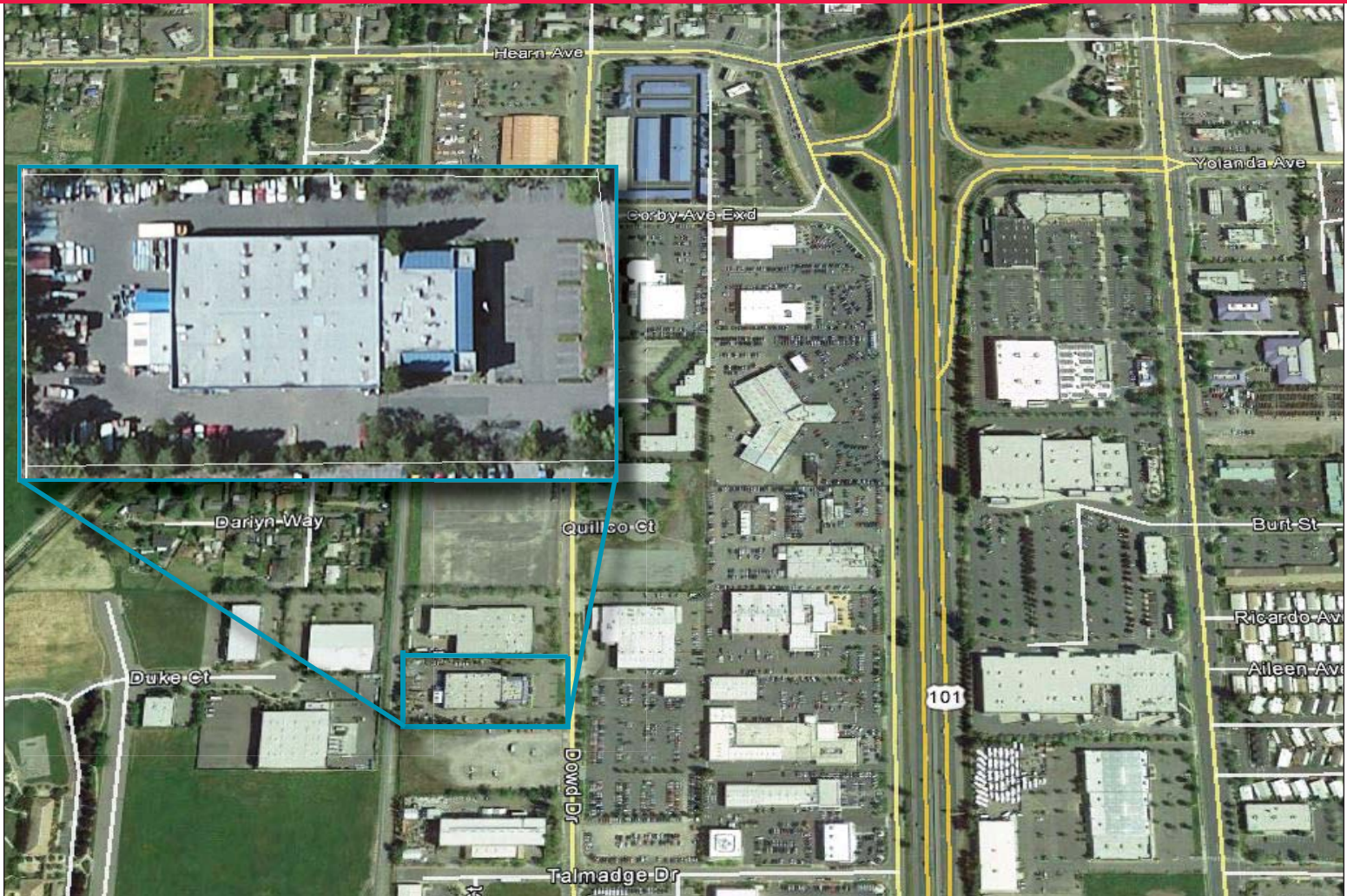


Barry Palma, CCIM Sr Vice President 707.583.8410 bpalma@newmarkccarey.com CA RE License #00901364

Newmark
Cornish & Carey 2455 Bennett Valley Road, Suite C200, Santa Rosa, CA 95404 T 707.583.8400 www.newmarkccarey.com

2833 Dowd Drive

Santa Rosa



Barry Palma, CCIM Sr Vice President 707.583.8410 bpalma@newmarkccarey.com CA RE License #00901364

**Newmark
Cornish & Carey**

2455 Bennett Valley Road, Suite C200, Santa Rosa, CA 95404 T 707.583.8400 www.newmarkccarey.com