

1014
LARKIN
STREET
SAN FRANCISCO

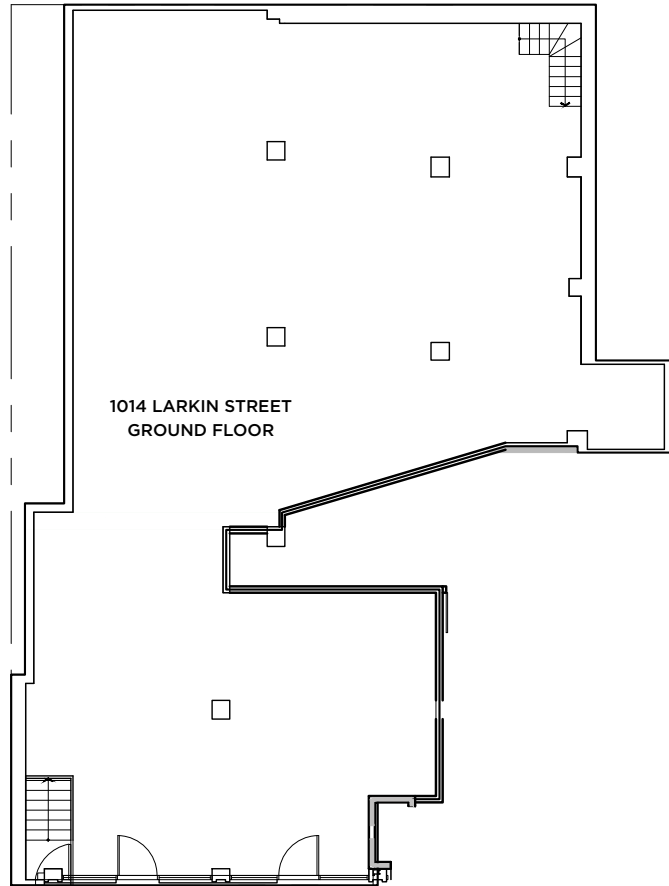
1014



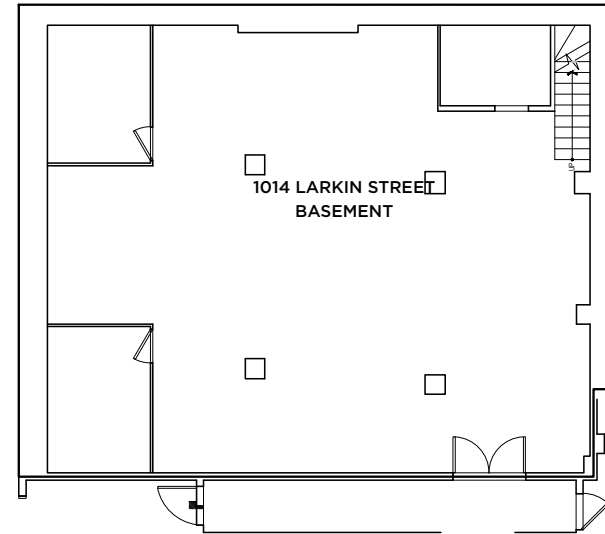
+/- 2,112 SF + 1,121 SF LOWER LEVEL
RETAIL/PROFESSIONAL OFFICES





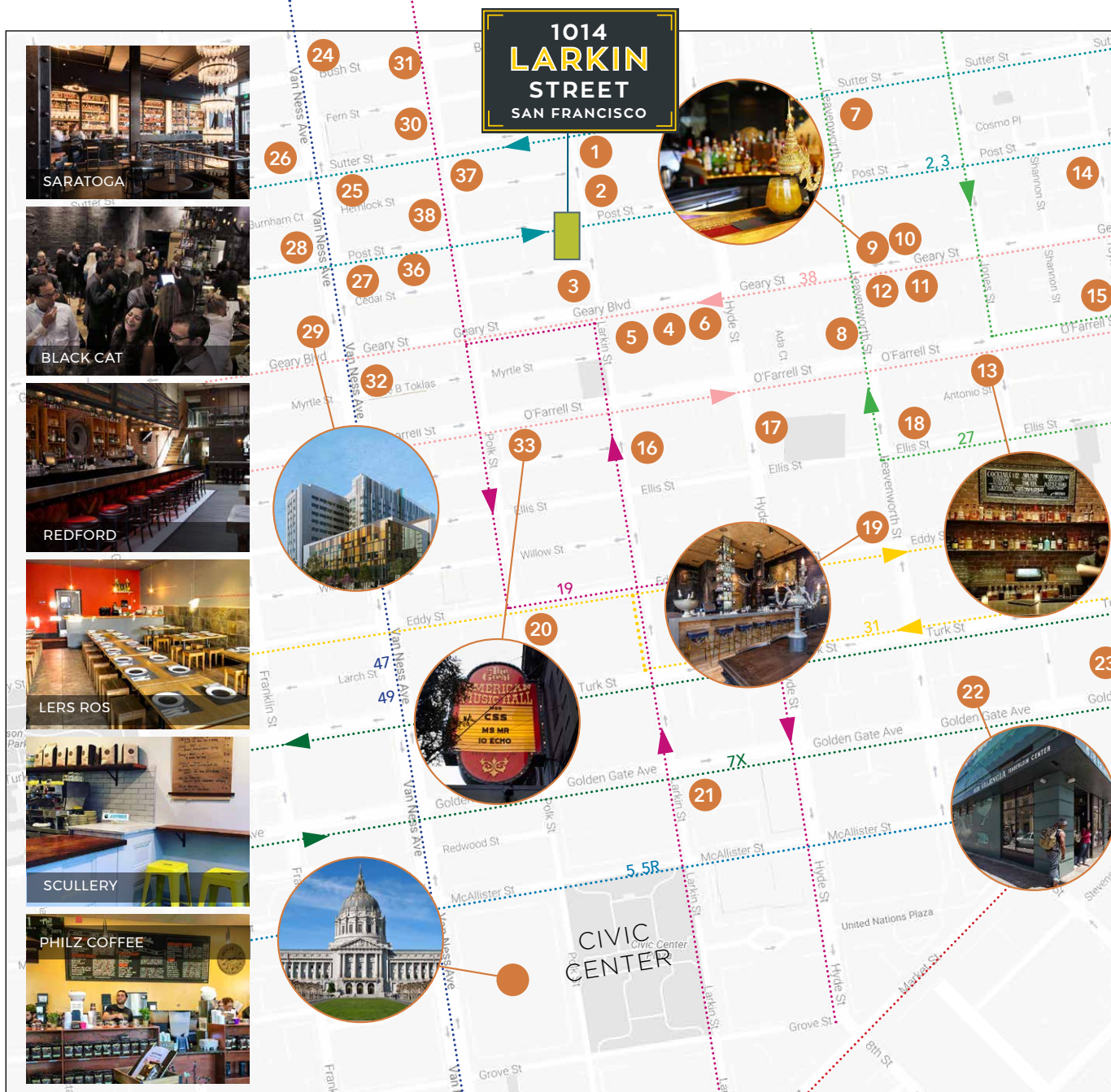


+/- 2,112 SF



+/- 1,121 SF

TENDERLOIN/LOWER NOB HILL



1. Mr. Holmes Bakehouse
2. The Saratoga
3. Jane
4. Whiskey Thieves
5. Moulin Rouge Cafe
6. Rum & Sugar
7. Liholiho Yacht Club
8. Elephant Sushi
9. Osha Thai
10. Mensho Ramen
11. Scullery
12. Redford
13. Bourbon & Branch
14. The Owl Tree
15. Napa Valley Exchange
16. Lers Ros
17. Hooker's Sweet Treats
18. Jessica Silverman Gallery
19. Black Cat
20. Brenda's French Soul Food
21. Philz Coffee
22. 826 Valencia
23. Golden Gate Theatre
24. Peet's Coffee
25. CVS Pharmacy
26. BevMo
27. 24 Hour Fitness
28. FedEx Office Print & Ship
29. CPMC Hospital Campus
30. Mayes Oyster House
31. Peoples Barber
32. AMC Van Ness
33. Great American Music Hall



maven
RETAIL • OFFICE • INDUSTRIAL

HALEY KLEIN

office 415.404.7330

haley@mavenproperties.com

BRE #01907308

NOTICE: This information has been secured from sources we believe to be reliable but we make no representations, warranties, express or implied, as to the accuracy of the information. Listing broker has been given enough information to provide only a preliminary interest in the property. The materials are not to be considered fact. The information contained herein is not a substitute for thorough due diligence investigation. References to square footage, zoning, use, or age are approximate. Please contact the San Francisco Planning Department to verify zoning at (415) 558-6378, as neither broker or landlord represent that this space is suitable for your use. Tenant or Buyer must verify the information at their own expense and bears all the risk for any inaccuracies. By receiving these materials you are agreeing to the disclaimers set forth herein. BRE#01878802

466 Green Street Suite #203 | San Francisco, CA 94133 | 415.781.7700