

Proctor Square

Presented by
Pivotal Forensic Accounting & Audits

2602 N Proctor St, Tacoma, WA 98407



Price: \$23.00 /SF/YR

Located in Tacoma's highly desirable Proctor District, this second-floor partial sublease provides a turnkey solution for professional users seeking proximity to thriving neighborhood amenities. The space offers two private offices and access to a shared reception, large conference room, and kitchen/break area within a professionally maintained suite. With a total of approximately 1,080 SF available within a 2,080 SF office, this configuration supports small firms or growing practices that value flexibility and a collaborative environment.

The property is ADA accessible, features an interior lobby entry with elevator service, and offers a secure environment with on-site cameras. Natural light fills the private offices and conference room, creating a welcoming atmosphere. All utilities, building services, and property expenses are included under a full-service gross structure. Surface parking for 26 vehicles is available, and the site benefits from walkable retail, dining, and essential services in the Proctor District.

Proctor Square

2602 N Proctor St, Tacoma, WA 98407



Beautiful Office space in the heart of Proctor District

Two private offices plus front desk available for your staff. Shared conference room, reception, and kitchen.

Prime location at N 26th Street & Proctor, steps from popular retailers and restaurants. Fully built-out professional services office with hardwood

Walkable neighborhood boasting an 80 Walk Score and easy access to local transit options.

Lease includes all utilities, building services, and property-related expenses.

Tamsyn Earsley

tamsyn@pivotalaccountant.com

(253) 752-3920

Pivotal Forensic Accounting & Audits

2602 N Proctor St
Tacoma, WA 98407

Exceptional office suite offering abundant natural light and a spacious, functional layout. The space features two private entrances—one from the main corridor and a separate rear entry—ideal for administrative staff and professionals arriving independently. A door separates the front reception and generous conference room from the private office wing, providing privacy and sound control. The large conference room is ideal for depositions, mediations, and client meetings. Well-suited for a law practice, the layout supports a staffed reception area and can accommodate an attorney plus one to two paralegals/legal assistants; fitting three staff in a single office is possible but would be tight. Must-see unit to fully appreciate the scale and daylight.

Proctor Square

2602 N Proctor St, Tacoma, WA 98407

Proctor Square

2602 N Proctor St, Tacoma, WA 98407



Shared Conference Room



Inside Office 1

Major Tenant Information

Tenant	SF Occupied	Lease Expired
Ackermann & Tilajef Pc	-	
Cueva Law Office	-	
Drager Architecture	-	
Megs & Mo	-	
Origin Medicine	-	
Pivotal Forensic Accounting & Audits	-	
Starbucks	-	
Toast Mi	-	
Valo Wine - Tasting Room	-	

2602 N Proctor St, Tacoma, WA 98407



Private Office 2

Listing space

2nd Floor Ste 201

Space Available	1,080 SF
Rental Rate	\$23.00 /SF/YR
Date Available	Now
Service Type	Full Service
Built Out As	Professional Services
Space Type	Sublet
Space Use	Office
Lease Term	Negotiable

Second-floor office sublease in Tacoma's Proctor District offering approximately 1,080 SF within a professionally maintained suite. The configuration includes two private offices, a reception area, and access to a shared conference room and kitchen. Amenities include central HVAC, ADA accessibility, and abundant natural light. Utilities and building services are included under a full-service structure.

Proctor Square

2602 N Proctor St, Tacoma, WA 98407

Property Photos



Shared Conference Room



Shared Work Area

Proctor Square

2602 N Proctor St, Tacoma, WA 98407

Property Photos



Private Office 1

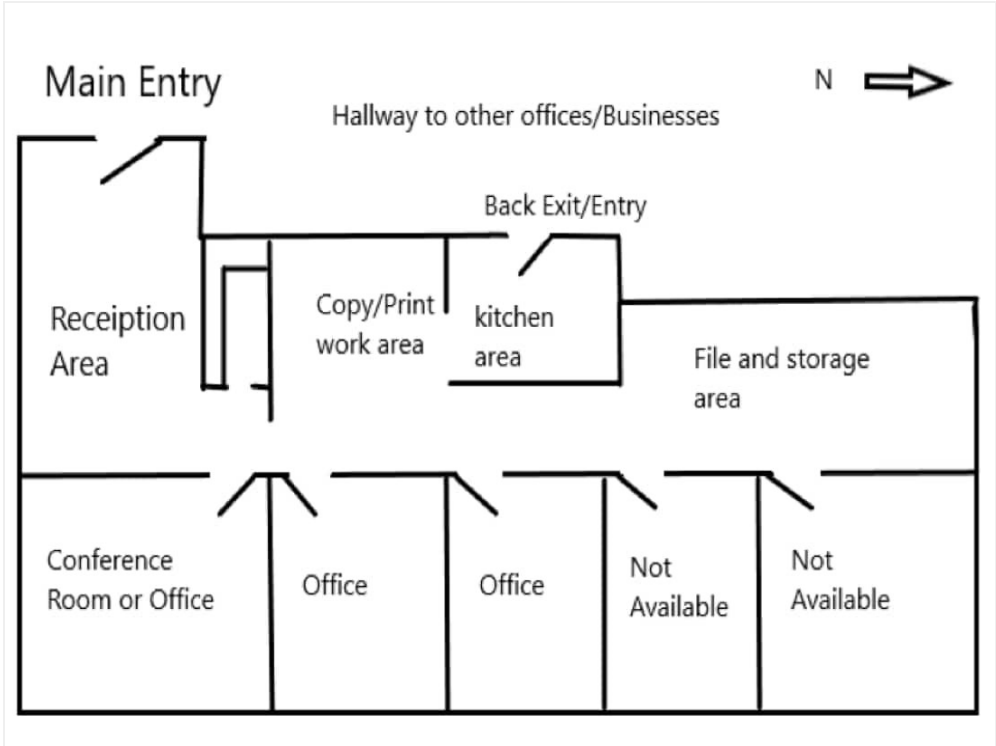


Private Office 2

Proctor Square

2602 N Proctor St, Tacoma, WA 98407

Property Photos



Floor Plan Suite 201



Shared Reception Area

Proctor Square

2602 N Proctor St, Tacoma, WA 98407

Property Photos



Building Photo

Proctor Square

2602 N Proctor St, Tacoma, WA 98407

Location

