



11,400 SF Multi-Tenant Retail For Lease

Demographics:	1 Miles	3 Miles	5 Miles
Total Population	3,815	33,822	58,288
Average HH Income	\$46,962	\$56,700	\$65,699
Median Age	40.8	34.1	36.2
Daytime Employment	11,529	28,543	35,511

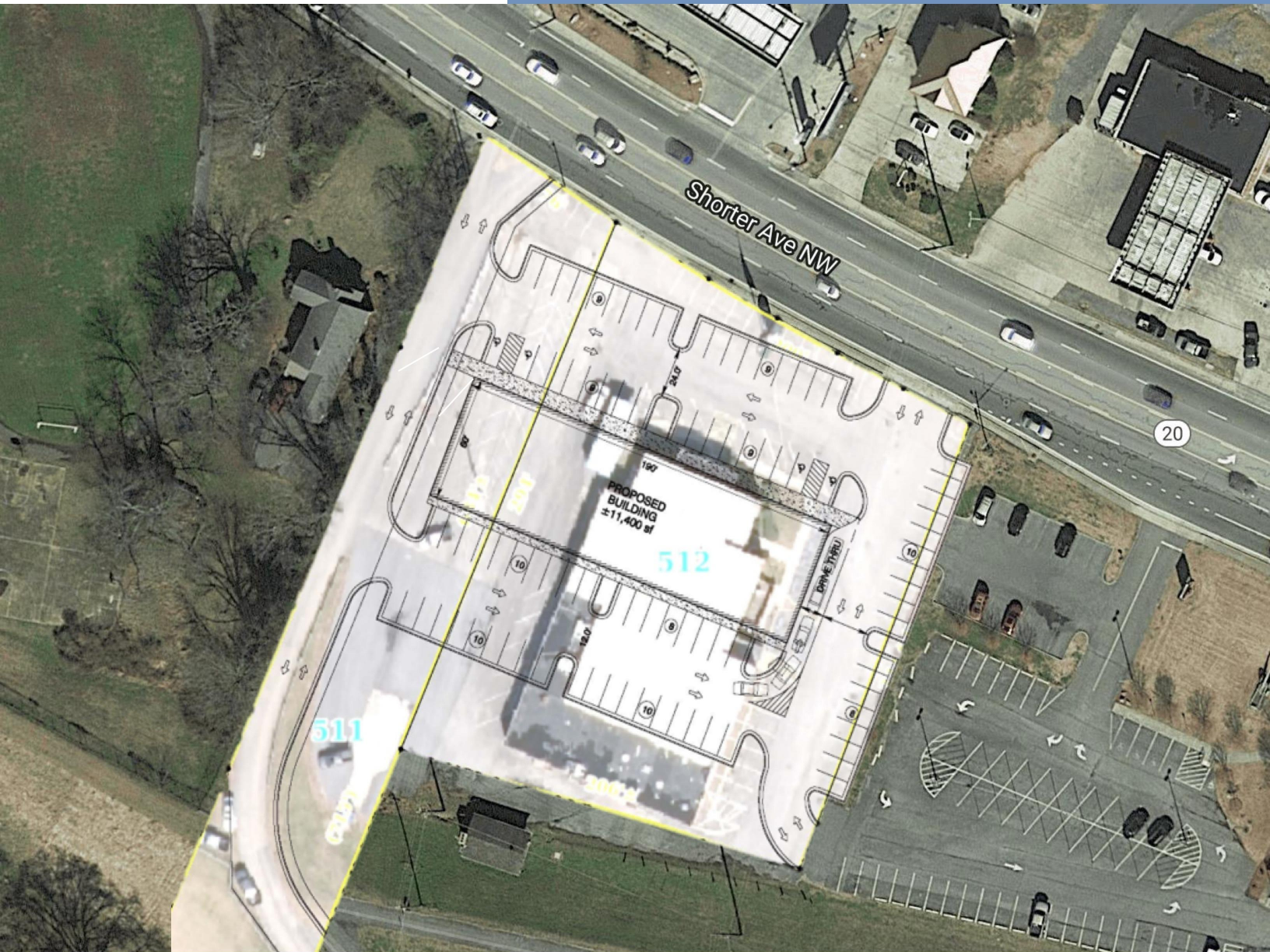
Traffic Counts: +/- 35,000 Turner McCall Blvd
+/- 27,000 N 2nd Avenue



Rocky Moore, CCIM
rocky@romogroupllc.com
(678) 986-2988



Brad Westbrook, CCIM
brad@westbrookre.com
(678) 384-7672



- Heart of Rome prime retail/restaurant site
- Adjacent to Floyd Medical Center (largest employer in Rome)
 - Adjacent to Shorter University
 - Across from Midtown Crossing Shopping Center
 - Within 1 mile of Berry College
- 35,000 CPD (cars per day) on Turner McCall Boulevard
- Full dedicated access off of Turner McCall Boulevard

SUMMARY PROFILE

2000-2010 Census, 2019 Estimates with 2024 Projections

Calculated using Weighted Block Centroid from Block Groups



Lat/Lon: 34.261/-85.1845

RS1

34.260984 -85.184527

		1 mi radius	3 mi radius	5 mi radius
POPULATION	2019 Estimated Population	3,815	33,822	58,288
	2024 Projected Population	4,055	35,980	61,612
	2010 Census Population	3,820	33,076	57,465
	2000 Census Population	4,488	32,696	54,642
	Projected Annual Growth 2019 to 2024	1.3%	1.3%	1.1%
	Historical Annual Growth 2000 to 2019	-0.8%	0.2%	0.4%
	2019 Median Age	40.8	34.1	36.2
HOUSEHOLDS	2019 Estimated Households	1,757	12,666	22,680
	2024 Projected Households	1,791	12,998	23,065
	2010 Census Households	1,681	11,879	21,383
	2000 Census Households	1,844	11,979	20,562
	Projected Annual Growth 2019 to 2024	0.4%	0.5%	0.3%
	Historical Annual Growth 2000 to 2019	-0.2%	0.3%	0.5%
RACE AND ETHNICITY	2019 Estimated White	48.1%	53.7%	63.1%
	2019 Estimated Black or African American	31.3%	29.2%	22.1%
	2019 Estimated Asian or Pacific Islander	1.4%	1.6%	2.3%
	2019 Estimated American Indian or Native Alaskan	0.6%	0.6%	0.5%
	2019 Estimated Other Races	18.6%	14.9%	12.0%
	2019 Estimated Hispanic	24.1%	19.9%	16.2%
INCOME	2019 Estimated Average Household Income	\$46,962	\$56,700	\$65,699
	2019 Estimated Median Household Income	\$29,203	\$42,363	\$49,363
	2019 Estimated Per Capita Income	\$21,808	\$21,787	\$26,001
EDUCATION (AGE 25+)	2019 Estimated Elementary (Grade Level 0 to 8)	13.6%	11.7%	8.9%
	2019 Estimated Some High School (Grade Level 9 to 11)	12.3%	14.2%	12.3%
	2019 Estimated High School Graduate	25.5%	28.8%	29.8%
	2019 Estimated Some College	20.1%	19.7%	20.1%
	2019 Estimated Associates Degree Only	5.5%	6.9%	7.4%
	2019 Estimated Bachelors Degree Only	12.6%	10.7%	12.4%
	2019 Estimated Graduate Degree	10.3%	8.0%	9.0%
BUSINESS	2019 Estimated Total Businesses	943	2,471	3,098
	2019 Estimated Total Employees	11,529	28,543	35,511
	2019 Estimated Employee Population per Business	12.2	11.6	11.5
	2019 Estimated Residential Population per Business	4.0	13.7	18.8

This report was produced using data from private and government sources deemed to be reliable. The information herein is provided without representation or warranty.