

**SITE DATA**

**SITE AREA:**  
 TOTAL SITE AREA: 1.69 A.C.  
 EXISTING BUILDING: .08 A.C. .04%  
 PROPOSED BUILDING: .12 A.C. .06%  
 EXISTING IMPERVIOUS: .71 A.C. 41%  
 PROPOSED IMPERVIOUS: .36 A.C. 20%  
 GREEN SPACE: .50 A.C. 29%  
 TOTAL: 1.69 A.C. 100%

FAR: .19 A.C.  
 ISR: .63 A.C.

**ZONING:**  
 C1 (COMMERCIAL)

**BUILDING:**  
 GENERAL COMMERCIAL 3,465 S.F.

**SETBACKS:**  
 REQUIRED:  
 FRONT (SOUTH) 50'  
 EASE SIDE 15'  
 WEST SIDE 0'  
 REAR (NORTH) 20'

**BICYCLE PARKING REQUIRED:**  
 2 SPACES / 151 10 REQUIRED VEHICLE SPACES  
 1 SPACE / 10 SPACES 8 MAX.  
 = 8 SPACES REQUIRED

**PROVIDED:**  
 1 8 BIKE HOOP RACK

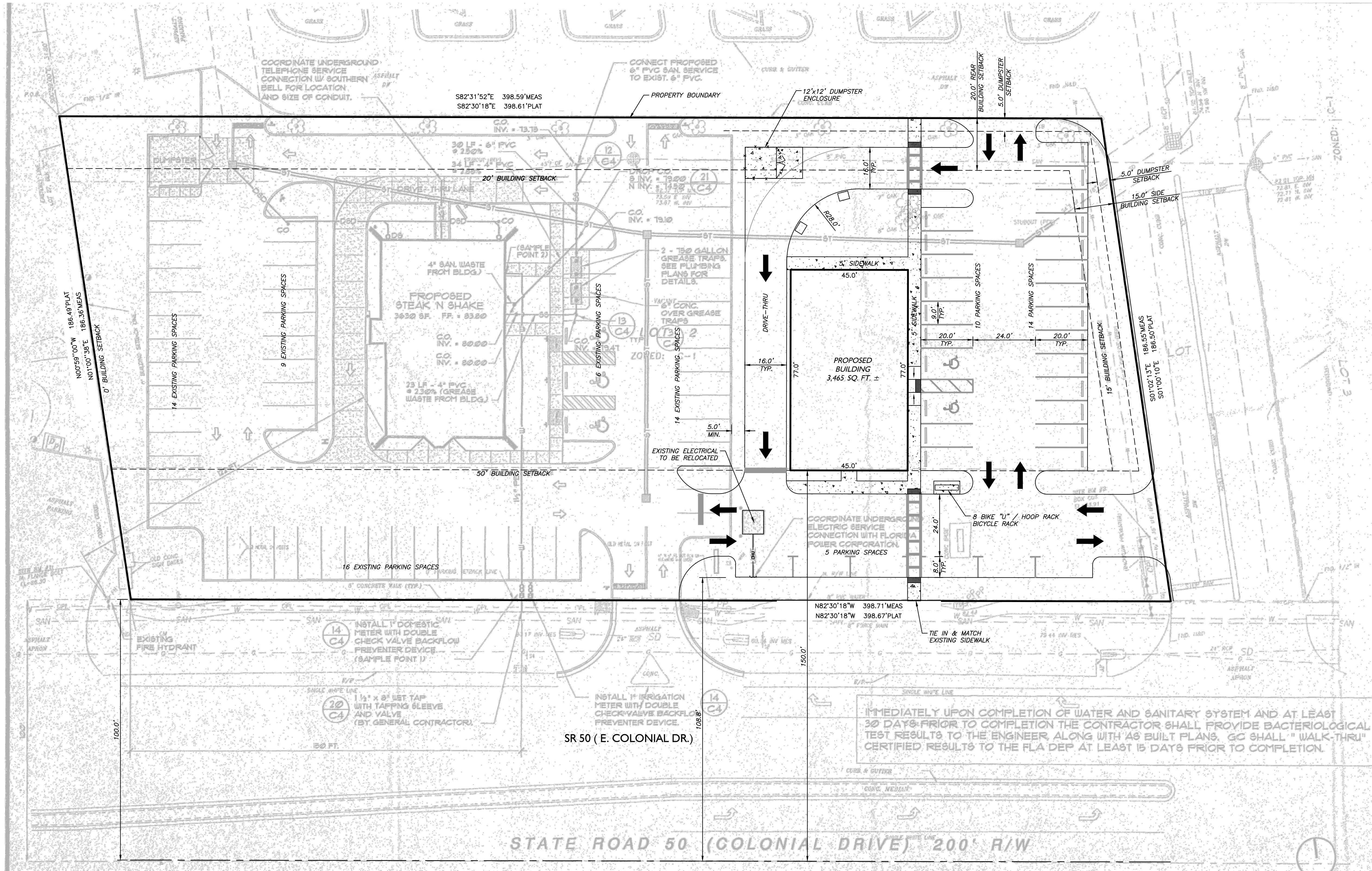
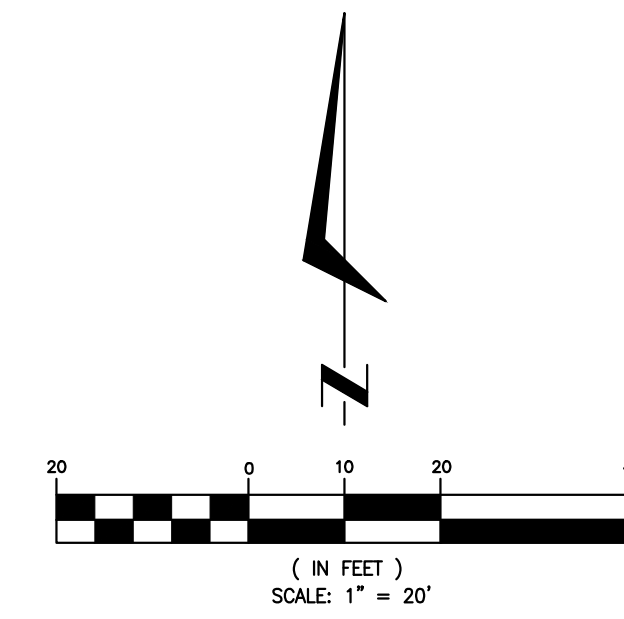
**EXISTING PARKING:**  
 REQUIRED: 1 SPACE / 4 SEATS PLUS 1 SPACE / 75 S.F. OF PATRON USE WHICH DOES NOT CONTAIN SEATS.  
 99 SEATS/4 = 24.75 + 2400 SF / 7 = 32 = 58 SPACES REQUIRED

**PROVIDED:**  
 56 STANDARD SPACES  
 +3 HANDICAP SPACES (2 REQUIRED)  
 59 SPACES PROVIDED

**PROPOSED PARKING:**  
 REQUIRED: GENERAL COMMERCIAL  
 1 SPACE / 300 SQUARE FEET OF GROSS FLOOR  
 3,465 S.F./300 = 12 PARKING SPACES REQUIRED

**PROVIDED:**  
 28 STANDARD SPACES  
 +2 HANDICAP SPACES  
 29 SPACES PROVIDED

**PER A.D.A.**  
 HANDICAP PARKING REQUIRED: 1 SPACE PER 25 SPACES (3 TOTAL REQUIRED)  
 EXISTING: 3 SPACES PROVIDED  
 PROPOSED: 2 SPACES PROVIDED  
 TOTAL PROVIDED: 5 SPACES



L:\SMALL OFFICE - ORLANDO.DWG\CONCEPTUAL\SO-ORL CONCEPT 5.dwg, 5/21/2020 9:52 AM, John Gillespie

DESIGNED BY: DK  
 DRAWN BY: JMG  
 CHECKED BY: JCM

REVISIONS

NO

DATE

NOT VALID WITHOUT SEAL

E. DOYLE LASETER, P.E. #41969

DATE

**CONCEPTUAL PLAN**

**PROPOSED OFFICE BUILDING  
 CITY OF ORLANDO  
 ORANGE COUNTY, FL.**

**ECON**  
 INNOVATIVE ENGINEERS, SURVEYORS & PLANNERS  
 6700 South Florida Avenue, Suite 13  
 Orlando, Florida 32819  
 (863) 686-0544 • Fax: (863) 683-6803  
 • SURVEYING AND MAPPING BUSINESS - LB 7454  
 • PROFESSIONAL ENGINEERING SERVICES - CA26683