



**UVO**  
UTAH'S VERY OWN



# RIVERBEND SHOPPING PLAZA

2936 WEST 12600 SOUTH  
RIVERTON, UTAH 84065



## RETAIL FOR LEASE COMING FALL 2023

9,450 SQFT. | MINIMUM DIVISIBLE 1,575 SQFT.  
\$32.00 PSF | NNN



### 2022 EST. POPULATION

1 MILE | 9,987  
3 MILE | 36,911  
5 MILE | 96,315



### 2022 EST. HOUSEHOLDS

1 MILE | 3,708  
3 MILE | 31,715  
5 MILE | 79,856



### 2022 EST. AVERAGE HH INCOME

1 MILE | \$110,221  
3 MILE | \$108,818  
5 MILE | \$137,984

**CENTURY 21**  
Everest

FERNANDO PETTY | REALTOR  
801.471.4121  
FERNANDO@UVOREALESTATE.COM

DEVELOPED BY





**UVO**  
UTAH'S VERY OWN

# PROPERTY SPECS

TOTAL SQFT. 9,450

MINIMUM DIVISIBLE 1,575 SQFT.

\$32.00 PSF | NNN

AADT 30,000 | CARS PER DAY

NEIGHBORING RIVERTON HIGH  
DENSELY POPULATED RESIDENTIAL  
AREA WITH FUTURE ECONOMIC  
GROWTH.

2936 WEST 12600 SOUTH

RIVERTON, UTAH 84065

CONTACT AGENT FOR DETAILS



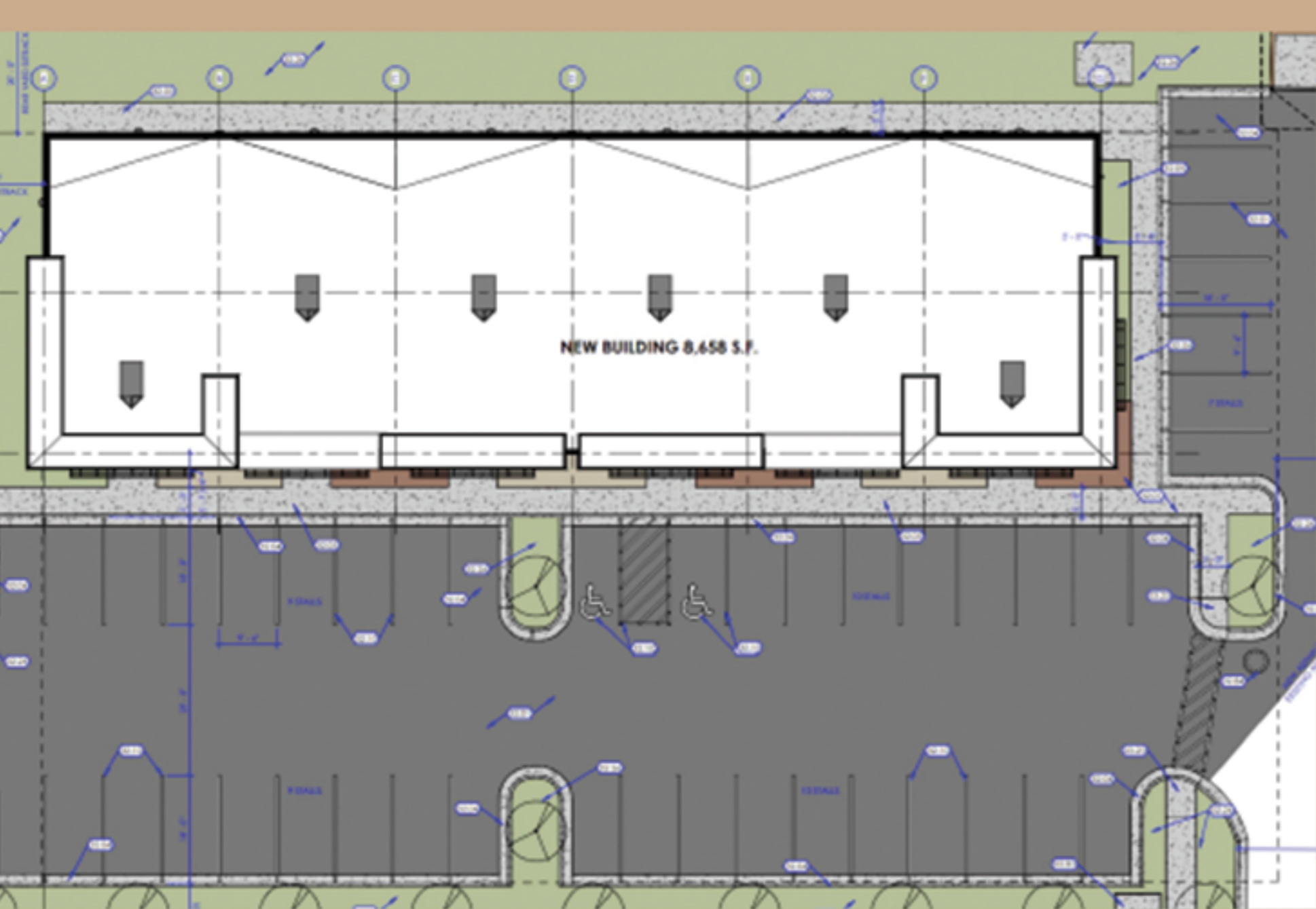
1 Isometric View Birdseye  
SCALE



2 Isometric View Left Side  
SCALE



3 Isometric View Right Side  
SCALE



**CENTURY 21**  
Everest

FERNANDO PETTY | REALTOR  
801.471.4121  
FERNANDO@UVOREALESTATE.COM

DEVELOPED BY



The information provided in this statement is subject to change and should be relied upon for reference purposes only. To ensure a transparent and efficient process, all negotiations pertaining to the purchase, renting, or leasing of the aforementioned property are to be exclusively conducted through our office. Although we have made efforts to gather information from reliable sources, we cannot guarantee its accuracy.