



THE RIVER GARDENS

BANNING STREET
GREENWICH
LONDON, SE10 0FE

AVAILABLE UNITS TO LET:

Unit 1/A3 restaurant: 2,531.45 sq ft
Unit 2/A3 restaurant: 1,789 sq ft

KALMARs

COMMERCIAL

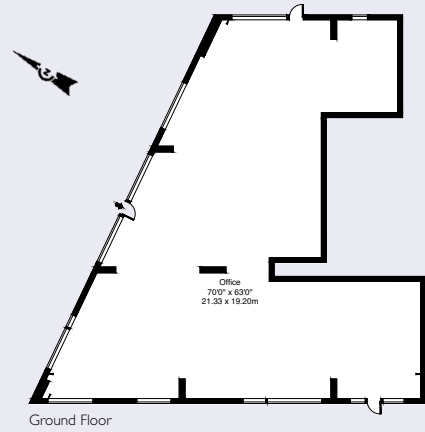
2 Shad Thames, SE1
020 7403 0600
KALMARS.COM

UNIT 1:

USAGE: A3 Restaurant

SIZE: 2,531.45 sq ft

RENT: £45,000



The two units are found on the Thames Path overlooking the River Thames and Canary Wharf. Part of a brand new development, the properties come in shell and core condition with capped services. They have floor to ceiling height windows on three aspects, access to a riser and unit 2 benefits from bi-folding doors at its front.

There are a number of new developments in the area including Enderby Wharf and new projects in the pipeline. The final building is currently under construction and due to launch in 2018 next door. It will expand the number of residential units in The River Gardens to 837.

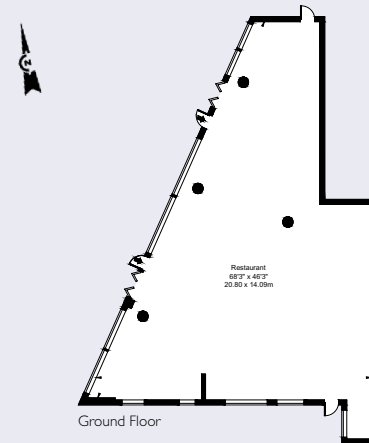
There are currently close to 400 residential units in River Gardens which have almost entirely sold. 50% of residential purchasers are couples and 10-15% of the occupants have children. A local community is beginning to grow within the other commercial units in River Gardens. They comprise of a creche, dry cleaners, local convenience store and local offices starting to take occupation over the course of the new year.

UNIT 2:

USAGE: A3 Restaurant

SIZE: 1,789 sq ft

RENT: £32,000



LOCATION

The River Gardens development is located a short distance along the Thames Path to the centre of Greenwich.

The River Gardens is 0.4 miles from Maze Hill station which is serviced by the Southeastern Line and has trains running to London Bridge and Cannon Street.

Contact: Greg Giessen
Email: gregg@kalmars.com
Tel: 020 7403 0600

KALMARS

COMMERCIAL

2 Shad Thames, SE1
020 7403 0600
KALMARS.COM