

Unit 7



For Lease

# High Visibility Retail Space

## Andrew M. Ward

Senior Associate  
+1 603 206 9655  
andy.ward@colliers.com

## Tim Braseth

Associate  
+1 310 720 9994  
tim.braseth@colliers.com



500 Market Street, Suite 9  
Portsmouth, NH 03801  
+1 603 433 7100  
colliersnh.com

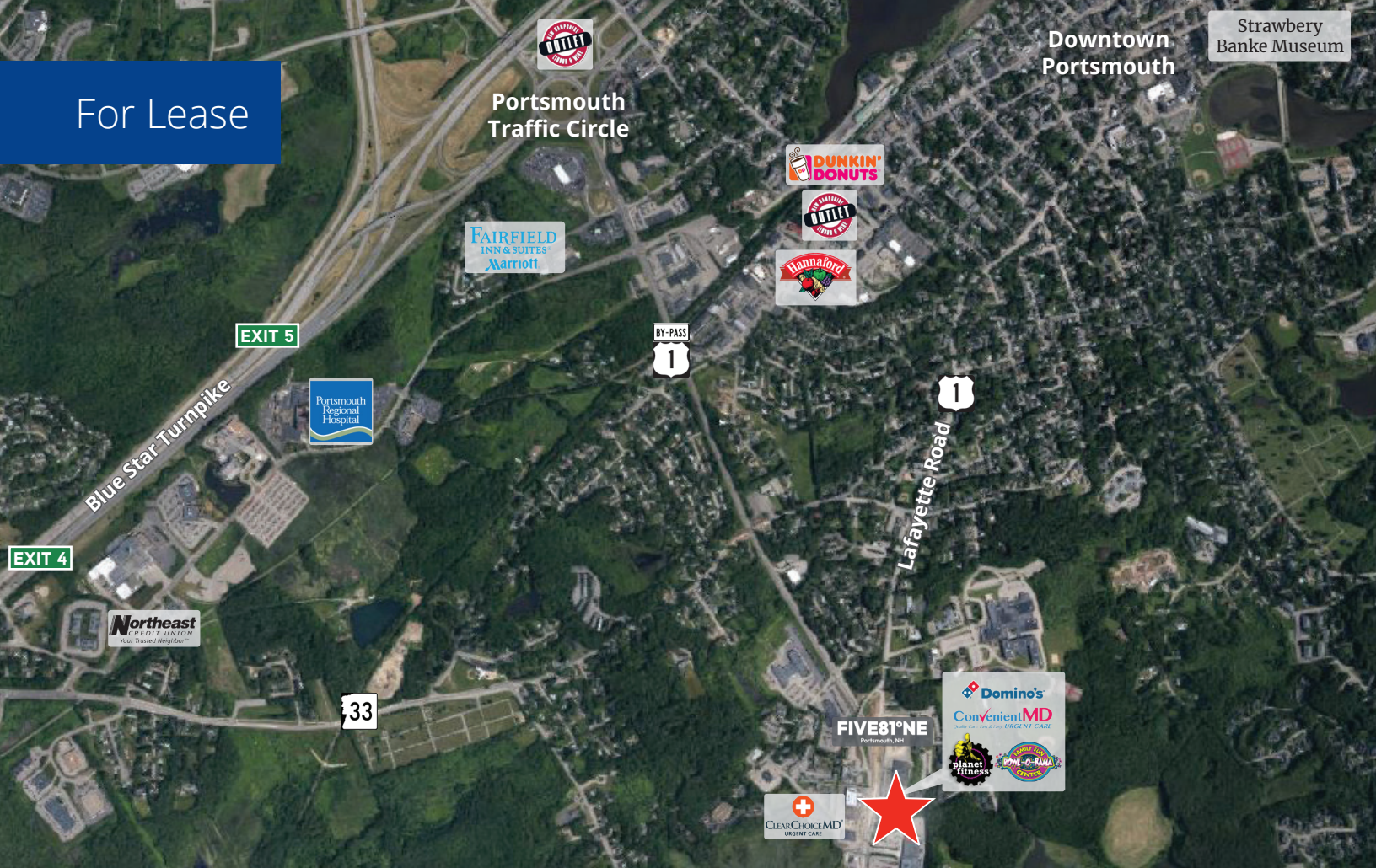
# 599 Lafayette Road, Unit 7 Portsmouth, NH

## Property Highlights

- One unit is available in a highly visible retail strip center located on Route 1/Lafayette Road, Portsmouth's central commercial corridor
- Unit 7 offers 2,836± SF of raw space, previously configured as an aquarium store, ready for new tenant fit-up with minimal to no demolition required
- Excellent signage opportunity and ample on-site parking
- Join high traffic national and regional retailers including ConvenientMD Urgent Care, Domino's, MacEdge, AAA, Bowl-O-Rama Family Fun Center, and more
- Neighbors include popular destination restaurants TOUR Golf & Grill and FIVE81°NE, as well as West Marine, Planet Fitness, Ethan Allen, and Harbor Freight

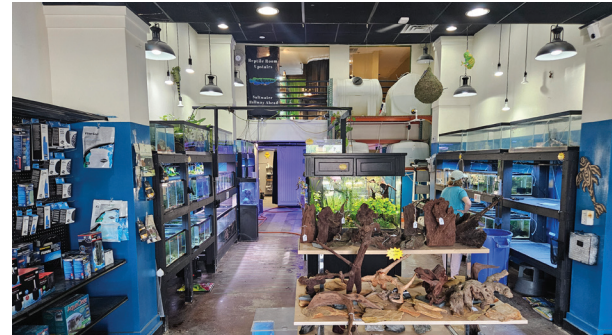
Information herein has been obtained from sources deemed reliable, however its accuracy cannot be guaranteed by Colliers International | New Hampshire & Maine. The user is required to conduct their own due diligence and verification. Colliers International | New Hampshire & Maine is independently owned and operated.

For Lease



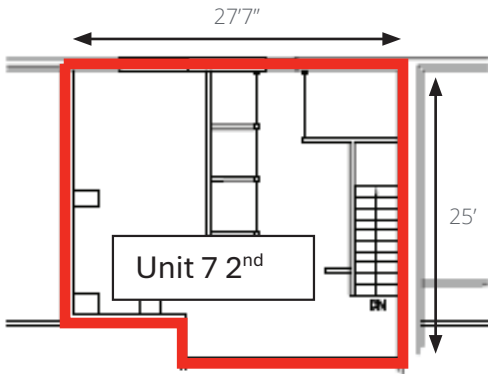
## Specifications

Address:	599 Lafayette Road
Location:	Portsmouth, NH 03801
Building Type:	Retail plaza
Year Built:	1972
Year Renovated:	2016
Total Building SF:	50,407±
Available SF:	Unit 7: 2,836±
Utilities:	Municipal water & sewer Natural gas
Zoning:	G1
Parking:	Ample on-site
2024 NNN Expenses:	\$5.40 PSF • CAM: \$3.05 • Taxes: \$2.35
Accessibility:	Highly visible location on Route 1, Portsmouth's central commercial corridor
Lease Rate:	\$15.00 NNN

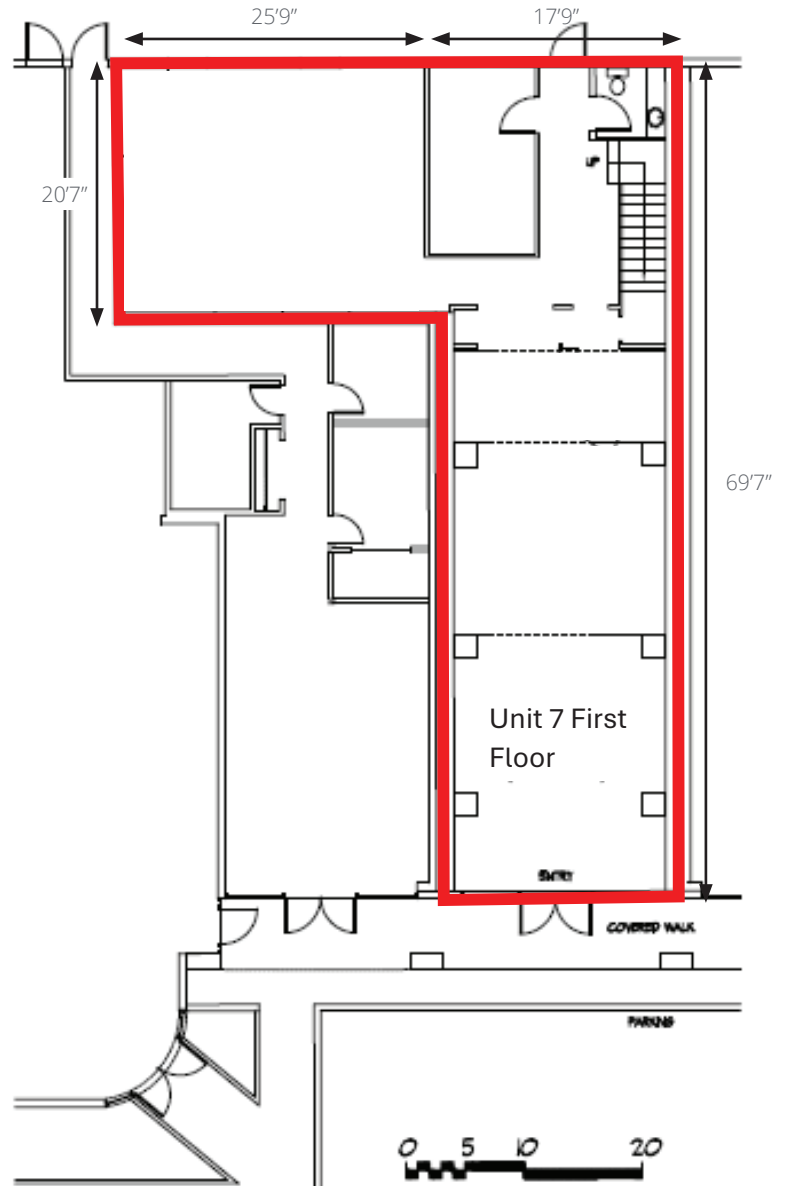


Colliers | 500 Market Street, Suite 9, Portsmouth, NH 03801  
+1 603 433 7100 | colliersnh.com

# Unit 7 Floor Plan



Unit 7 Second Floor



Unit 7 First Floor



Key Plan

