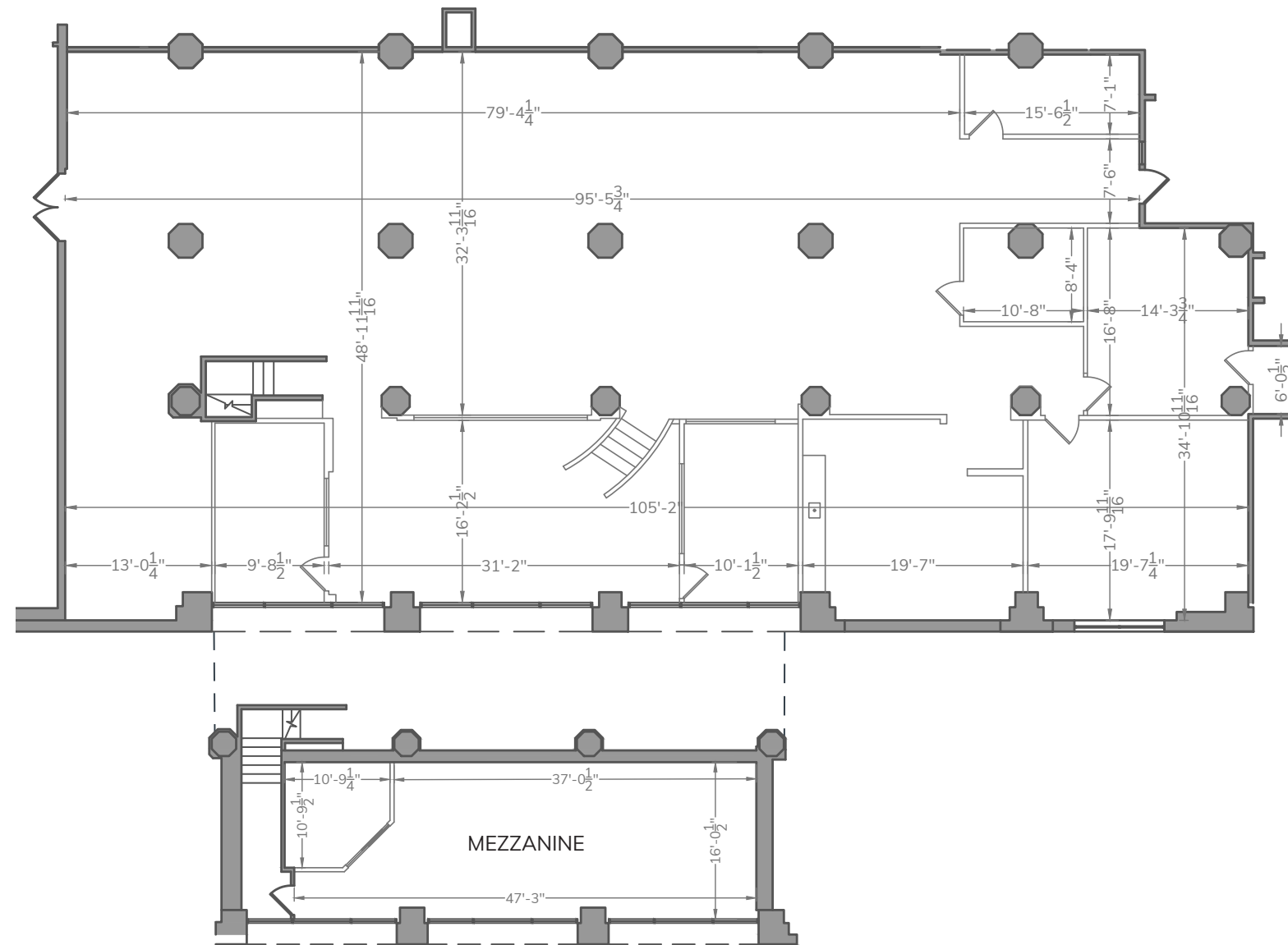


# 55 FRANCISCO

SUITE 100 | 6,507 SF | AVAILABLE NOW

5,615 SF GROUND + 892 SF MEZZANINE

- Private street entrance with exterior signage
- Consistent weekday traffic driven by surrounding office employees, medical patients and visitors
- Across from Hillstone with walkable access to the Embarcadero
- Dedicated parking lots with ample parking and easy access to multiple transit systems
- Ideal for office use, fitness and health & wellness



WATERFRONTPLAZA.NET



For leasing information, please contact:

**Therese Cron** | 805-878-1684 | [Therese.Cron@JamestownLP.com](mailto:Therese.Cron@JamestownLP.com)

**Alex Schwiebert** | 415-813-4945 | [Alex.Schwiebert@JamestownLP.com](mailto:Alex.Schwiebert@JamestownLP.com)