

College Center Building

4556 University Way NE Seattle



FOR LEASE

2nd Floor Professional Service Space

Josh Heyum

Principal

425.445.5799

josh@vistapacificgroupinc.com

Jake Staniszewski

Broker

425.284-4270 Ext. 1009

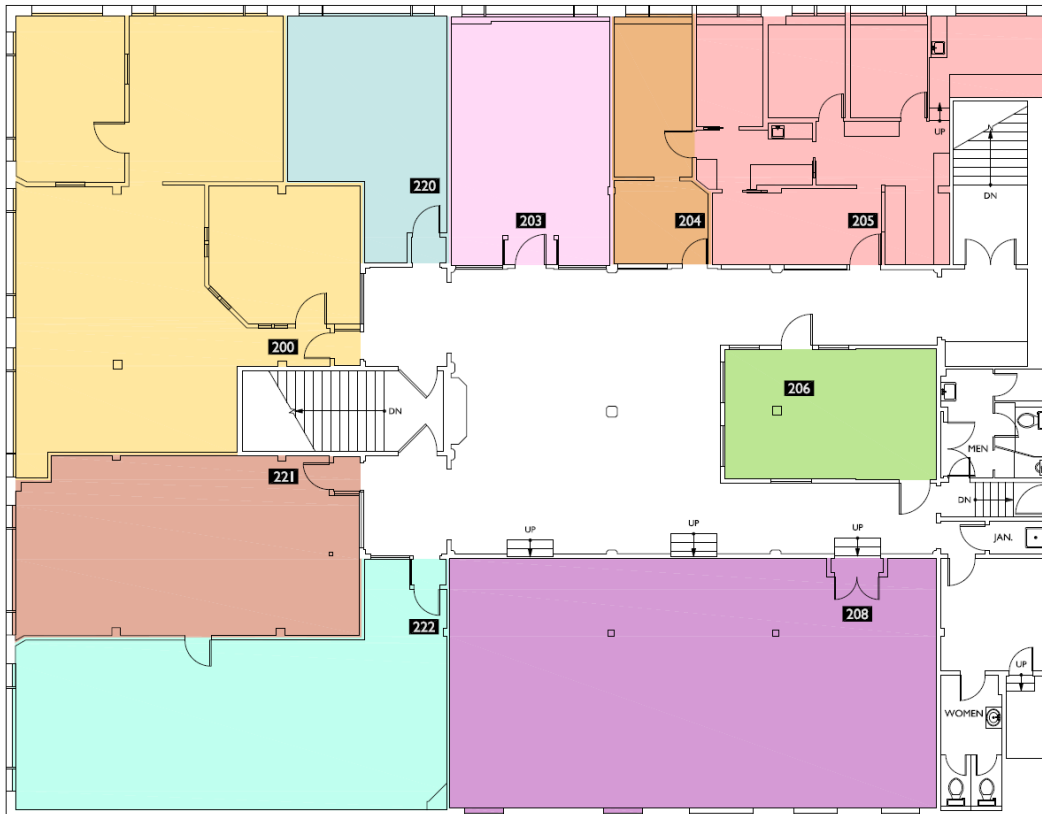
jake@vistapacificgroupinc.com



College Center Building

4556 University Way NE Seattle

Suite	SF	Rate	Availability
2nd Floor	410 RSF - 2,411 RSF	\$21/SF/Yr, MG	Now



Suite #	Occupant Area	Rentable Area	Suite #	Occupant Area	Rentable Area
Suite 200	1,256	1,539	Suite 208	1,180	1,446
Suite 203	394	483	Suite 220	335	410
Suite 204	210	257	Suite 221	605	741
Suite 205	683	837	Suite 222	788	965
Suite 206	266	326			

Rentable Area calculated using a Client provided Load Factor of 1.225

Josh Heyum
Principal
425.445.5799
josh@vistapacificgroupinc.com

Jake Staniszewski
Broker
425.284-4270 Ext. 1009
jake@vistapacificgroupinc.com

Building Features

- Preserved turn of the century architecture
- Key location in the heart of the University District
- Extensive glass-line with operable windows
- Great tenant mix of professional service, education, and recreation

