

SINGLE TENANT OFFERING

***436 US-27, Clermont, FL 34714
Clermont, Florida***



PRICE: \$1,066,000 | Cap Rate 4.50%

The subject property is a 1,500 square foot new NNN retail tenant building located at 436 US-27, Clermont, FL and sits on 0.48 acre parcel just north of the intersection of US 27 and US 192 in South Clermont, FL. The subject property is located in front of a SuperWalmart and new Orlando Health Hospital conveniently located in dense commercial corridor located just 5 miles west of Walt Disney World.

- New Construction, Built in 2017
- NOI \$48,000
- National Brand Name Tenant
- GME traded on NYSE
- Outparcel to SuperWalmart
- New Hospital under construction



CONTACT:

Amy Schuemann
407-575-5543
amy@blurockcommercial.com

BluRock Commercial Real Estate, LLC

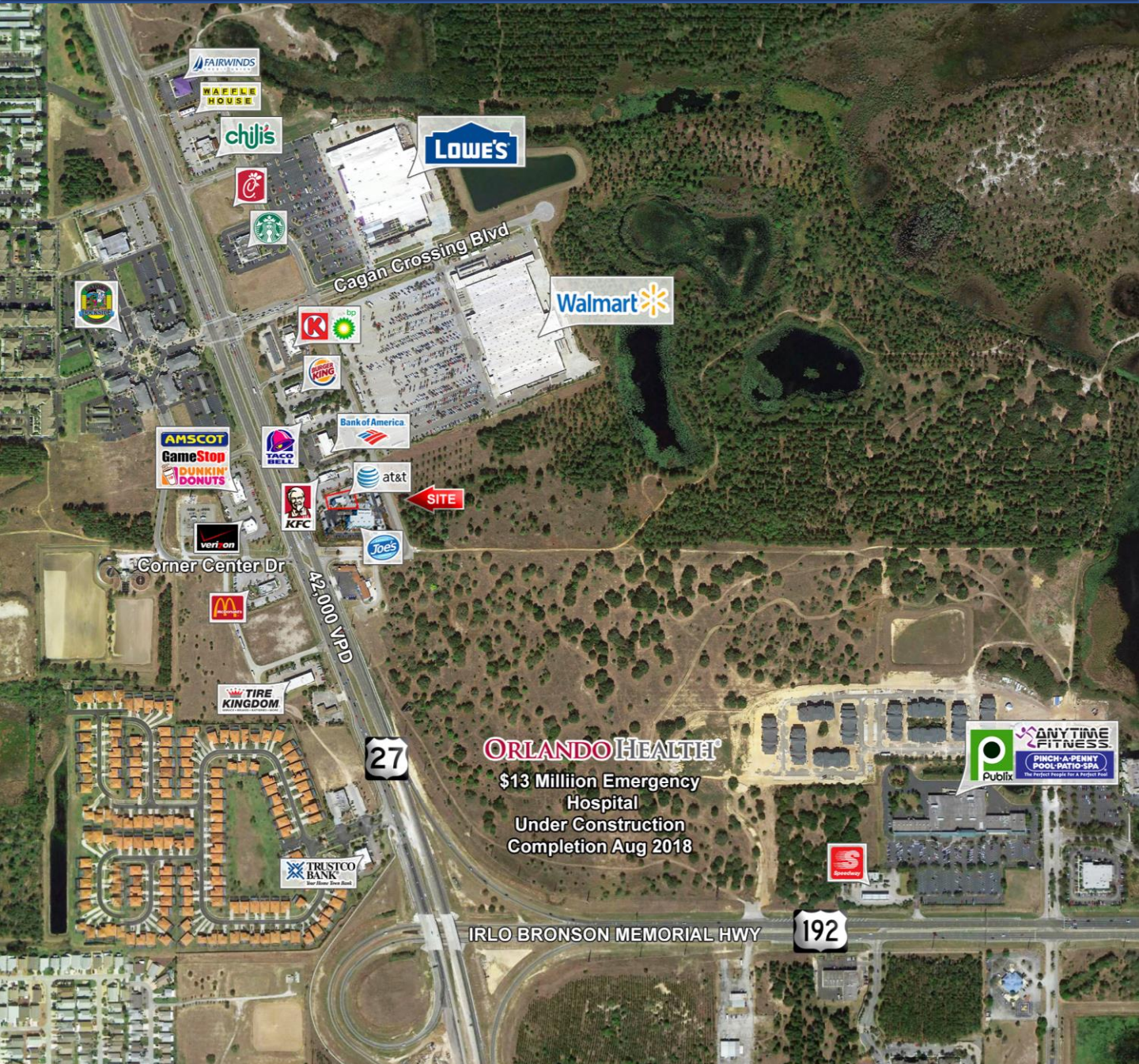
3408 S. Orange Avenue, Suite B
Orlando, FL 32806
Ofc: 407-641-5409
Fax: 407-583-4572

www.blurockcommercial.com



SINGLE TENANT OFFERING

436 US-27, Clermont, FL 34714
Clermont, Florida



BluRock Commercial Real Estate, LLC

- CONTACT:
- Amy Schuemann
- 407-575-5543
- amy@blurockcommercial.com

3408 S. Orange Avenue, Suite B
Orlando, FL 32806
Ofc: 407-641-5409
Fax: 407-583-4572

www.blurockcommercial.com



BluRock Commercial Real Estate, LLC is a Florida Licensed real estate broker license number 1033629.