



# 650 E FAIRPLAY BLVD

Fair Play, SC 29643

**JOHN RUFF**

Vice President

864.224.3503

[johnruff@mccoywright.com](mailto:johnruff@mccoywright.com)

**CARSON KELLY**

Associate

803.640.5600

[carson@mccoywright.com](mailto:carson@mccoywright.com)





**PROPERTY DESCRIPTION**

Available for lease +/- 9,100 SF warehouse space in Fair Play located at 650 E Fairplay Blvd. The property is located less than +/- 1.5 miles from both Exit 2 & Exit 4 off I-85. The floor plan is open with two restrooms and a small office space. Drive-in doors could easily be installed at the building. There is currently a 10' drop ceiling in the building but exposed ceiling heights are 13' at the eaves and 16' in the center. This is a great opportunity for any interstate-focused business looking for cheap warehouse space or retail user. Asking price for lease is \$3,800.00/Month Modified Gross. Please contact the listing agents with any questions regarding pricing or to set up a showing.

**OFFERING SUMMARY**

Lease Rate:	\$3,800.00/Month (Modified Gross)
Lot Size:	1.16 Acres
Building Size:	9,100 SF

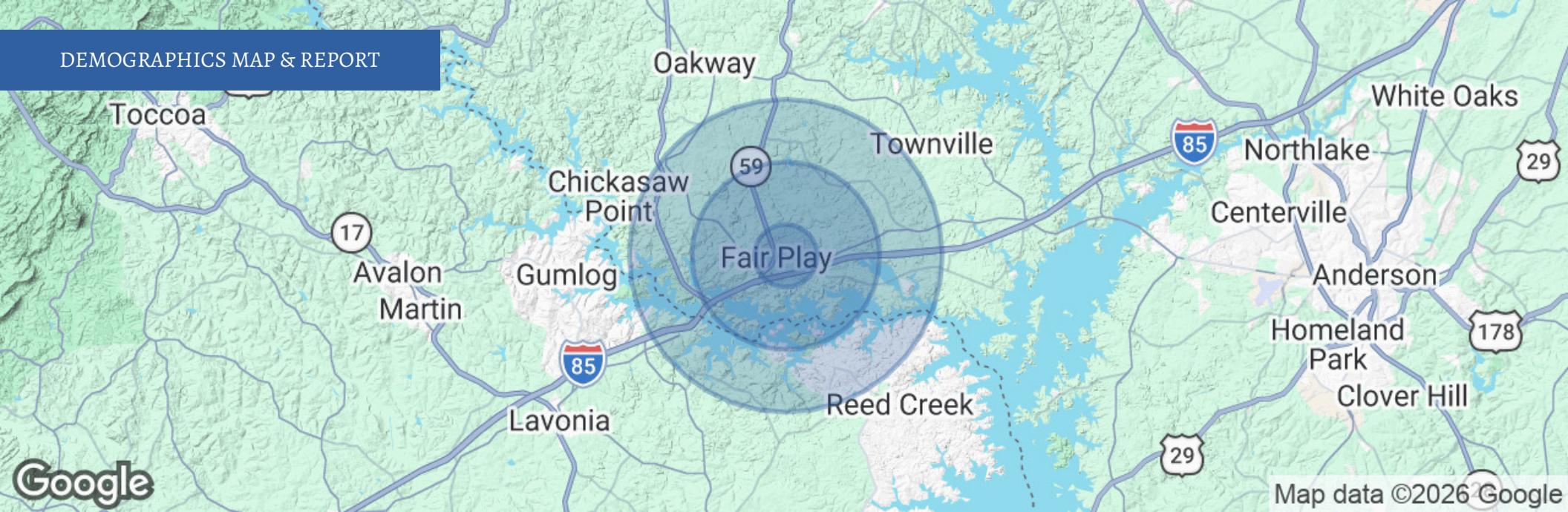
DEMOGRAPHICS	1 MILE	3 MILES	5 MILES
Total Households	150	947	3,031
Total Population	366	2,248	7,116
Average HH Income	\$93,488	\$93,456	\$91,641



**John Ruff**, Vice President | 864.224.3503 | johnruff@mccoywright.com  
**Carson Kelly**, Associate | 803.640.5600 | carson@mccoywright.com



John Ruff, Vice President | 864.224.3503 | johnruff@mccoywright.com  
Carson Kelly, Associate | 803.640.5600 | carson@mccoywright.com



POPULATION	1 MILE	3 MILES	5 MILES
Total Population	366	2,248	7,116
Average Age	44	46	47
Average Age (Male)	44	46	47
Average Age (Female)	44	46	47
HOUSEHOLDS & INCOME	1 MILE	3 MILES	5 MILES
Total Households	150	947	3,031
# of Persons per HH	2.4	2.4	2.3
Average HH Income	\$93,488	\$93,456	\$91,641
Average House Value	\$289,614	\$341,929	\$340,872

2020 American Community Survey (ACS)



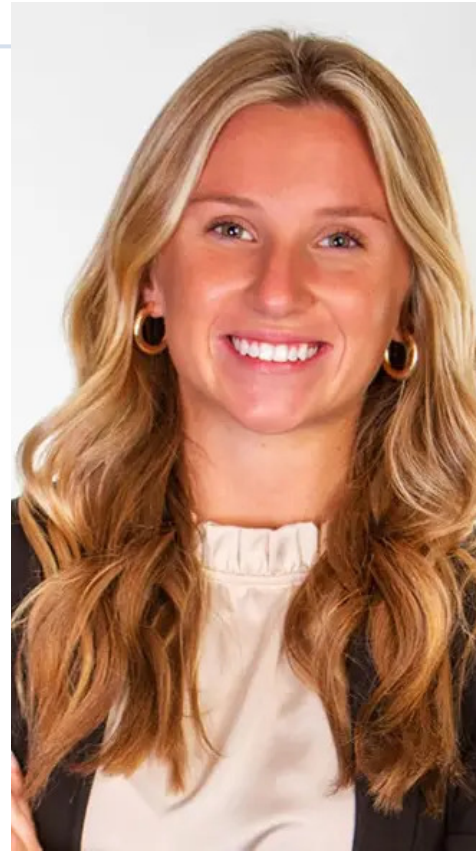
**John Ruff**, Vice President | 864.224.3503 | johnruff@mccoywright.com  
**Carson Kelly**, Associate | 803.640.5600 | carson@mccoywright.com



**JOHN RUFF**

Vice President

**Direct:** 864.224.3503  
johnruff@mccoywright.com



**CARSON KELLY**

Associate

**Direct:** 803.640.5600 **Cell:** 803.640.5600  
carson@mccoywright.com



**John Ruff**, Vice President | 864.224.3503 | johnruff@mccoywright.com  
**Carson Kelly**, Associate | 803.640.5600 | carson@mccoywright.com