

18264 - 18340 ALLEN ROAD
MELVINDALE, MICHIGAN

RETAIL FOR LEASE
1,876 – 4,000 Square Feet Available



**SIGNATURE
ASSOCIATES**
KNOW SIGNATURE | KNOW RESULTS

OAKWOOD PLAZA



PROPERTY FEATURES

- 29,822 total building square footage
- 4,000 maximum available square feet
- 1,876 minimum available square feet
- Lease Rate: \$19.00/sq.ft. NNN

Comments: Proposed 4,000 sq. ft. addition adjacent to the existing center. 1,876 sq. ft available in strip. Located in the heart of Melvindale's commercial shopping district, tenants may have the use of an existing pylon sign located at the hard corner, along with a pylon sign to be erected at the proposed building parking lot. Retailers in this center have historically enjoyed very strong sales volumes.

Major Tenants: Fancy Nails, Ming Sun, Check N' Go, Metro PCS, American Smokers, CVS Pharmacy and Happy Home Furniture.



For more information, please contact:

BRUCE BAJA
(248) 799 3177
bbaja@signatureassociates.com

SIGNATURE ASSOCIATES
One Towne Square, Suite 1200
Southfield, MI 48076
www.signatureassociates.com

18264 - 18340 Allen Road – Melvindale, Michigan

Retail For Lease

1,876 – 4,000
Square Feet
AVAILABLE

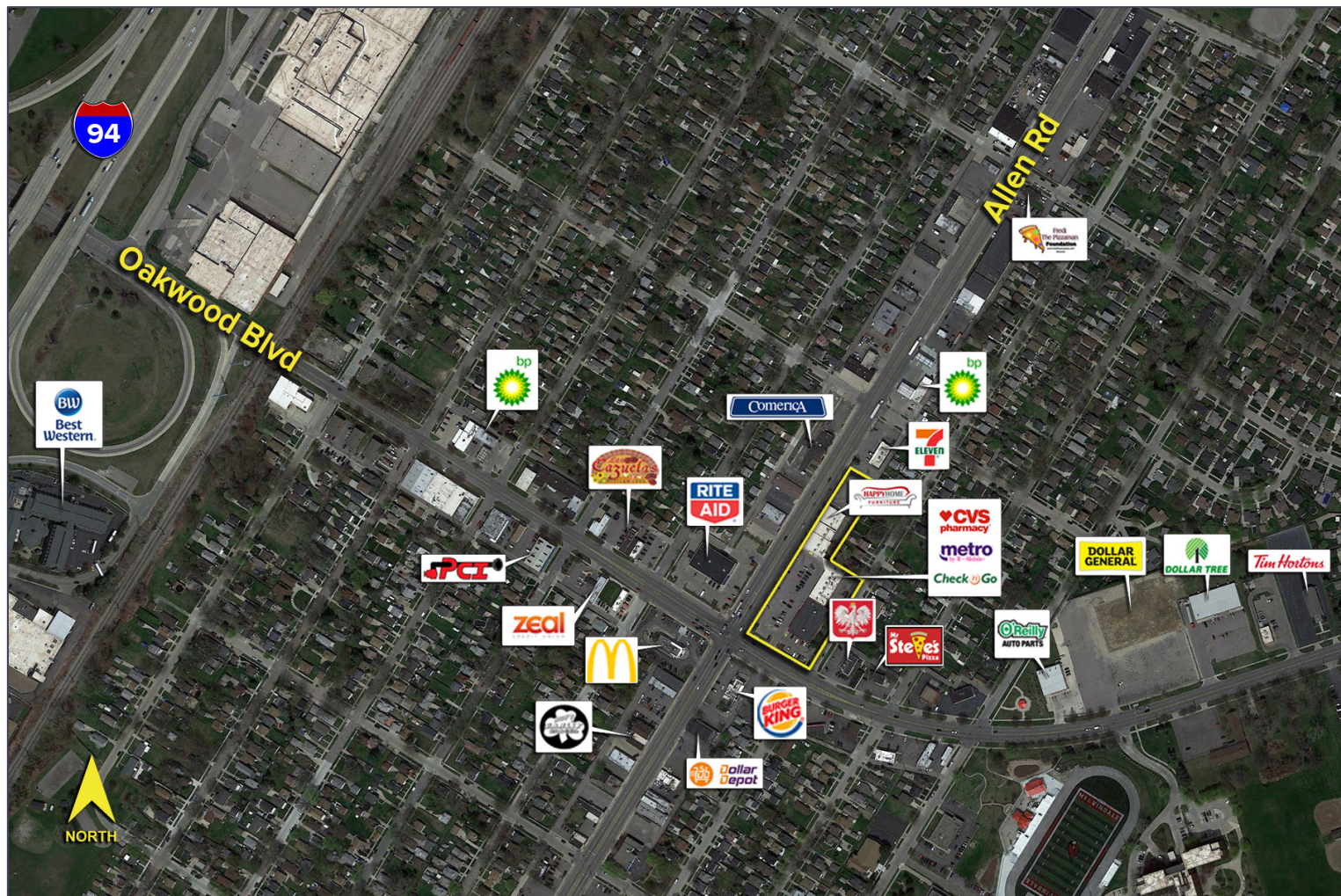


DEMOGRAPHICS

	POPULATION	MED. HH INCOME
1 MILE	10,856	\$41,460
3 MILE	103,325	\$45,724
5 MILE	318,448	\$47,028

TRAFFIC COUNTS (TWO-WAY)

30,297	Allen Rd. Btw Outer Dr. & Oakwood Blvd.
28,301	Oakwood Blvd. Btw Allen Rd. & I-94



For more information, please contact:

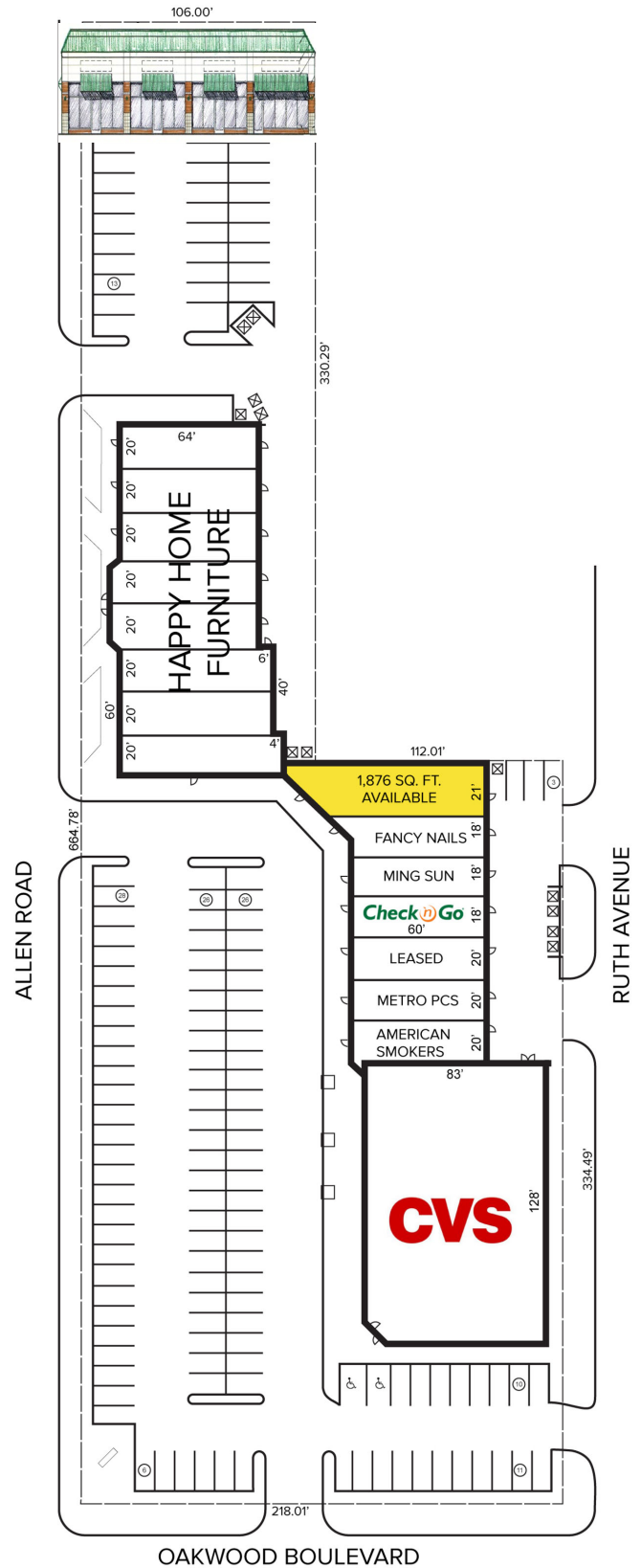
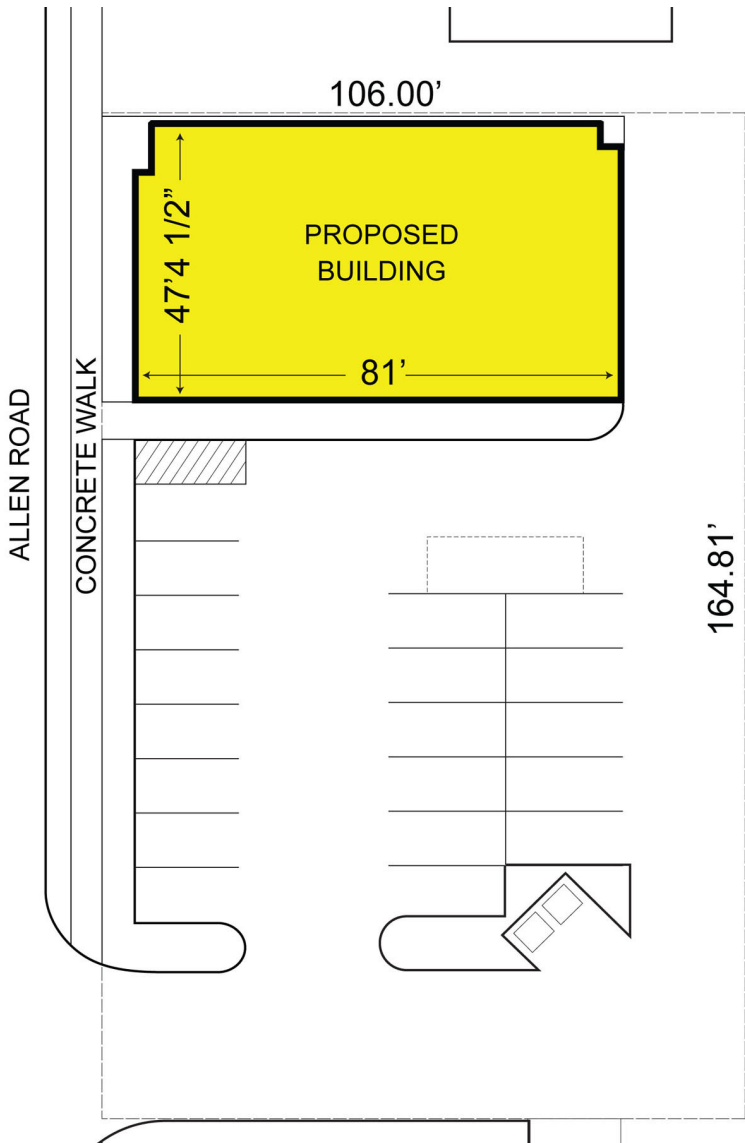
BRUCE BAJA
(248) 799 3177
bbaja@signatureassociates.com

SIGNATURE ASSOCIATES
One Towne Square, Suite 1200
Southfield, MI 48076
www.signatureassociates.com

18264 - 18340 Allen Road – Melvindale, Michigan

Retail For Lease

1,876 – 4,000
Square Feet
AVAILABLE



For more information, please contact:

BRUCE BAJA
(248) 799 3177
bbaja@signatureassociates.com

SIGNATURE ASSOCIATES
One Towne Square, Suite 1200
Southfield, MI 48076
www.signatureassociates.com