

# TRIMBLE TECH

455 EAST TRIMBLE ROAD

±80,125 SF OF R&D/OFFICE/MANUFACTURING

**NICK LAZZARINI**

+1 408 615 3410

[nick.lazzarini@cushwake.com](mailto:nick.lazzarini@cushwake.com)

LIC. #01788935

**KALIL JENAB**

+1 408 200 8800

[kalil.jenab@cushwake.com](mailto:kalil.jenab@cushwake.com)

LIC. #00848988

**KELLY YODER**

+1 408 615 3427

[kelly.yoder@cushwake.com](mailto:kelly.yoder@cushwake.com)

LIC. #01821117

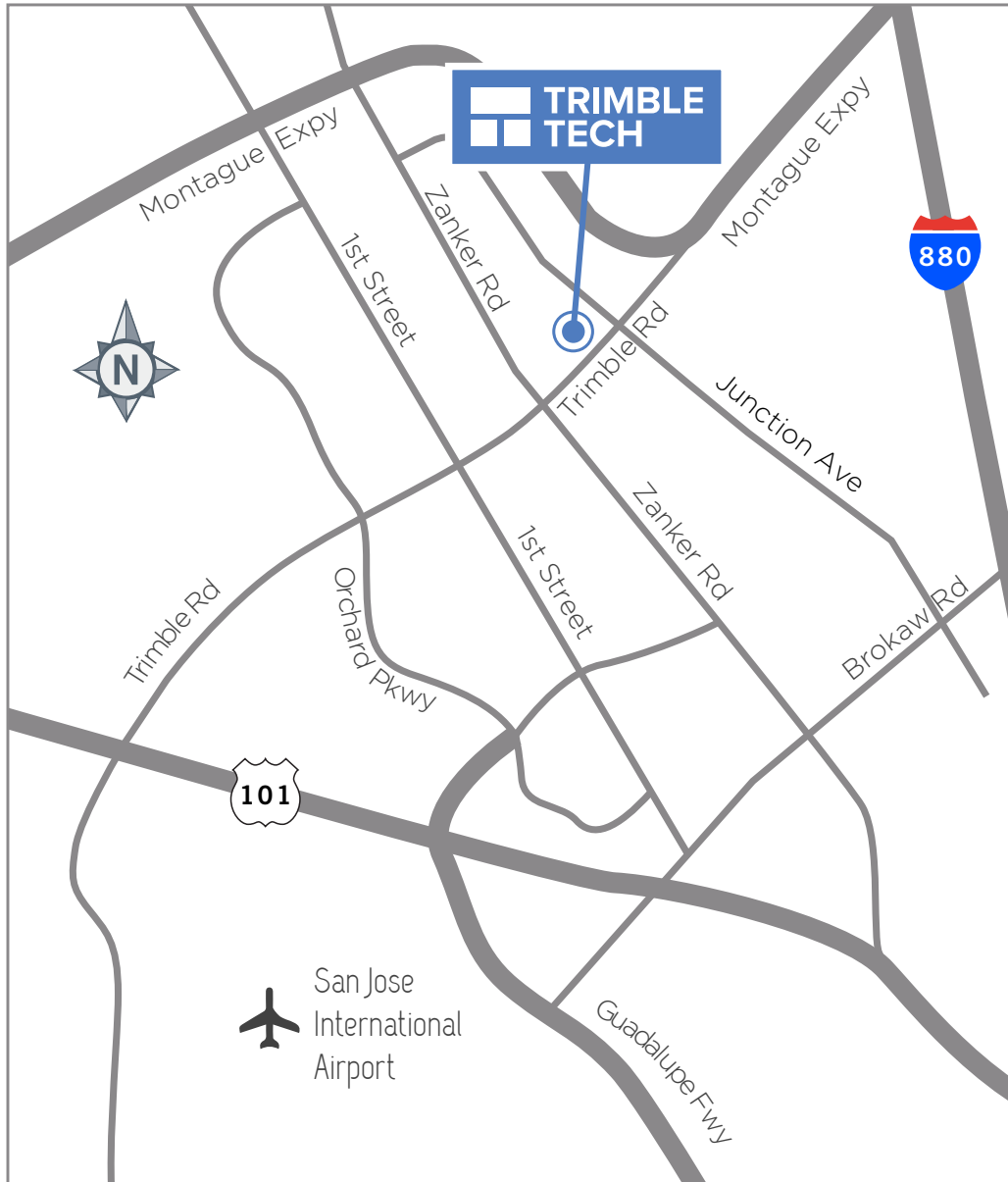
**STEVE HORTON**

+1 408 615 3412

[steve.horton@cushwake.com](mailto:steve.horton@cushwake.com)

LIC. #01127340



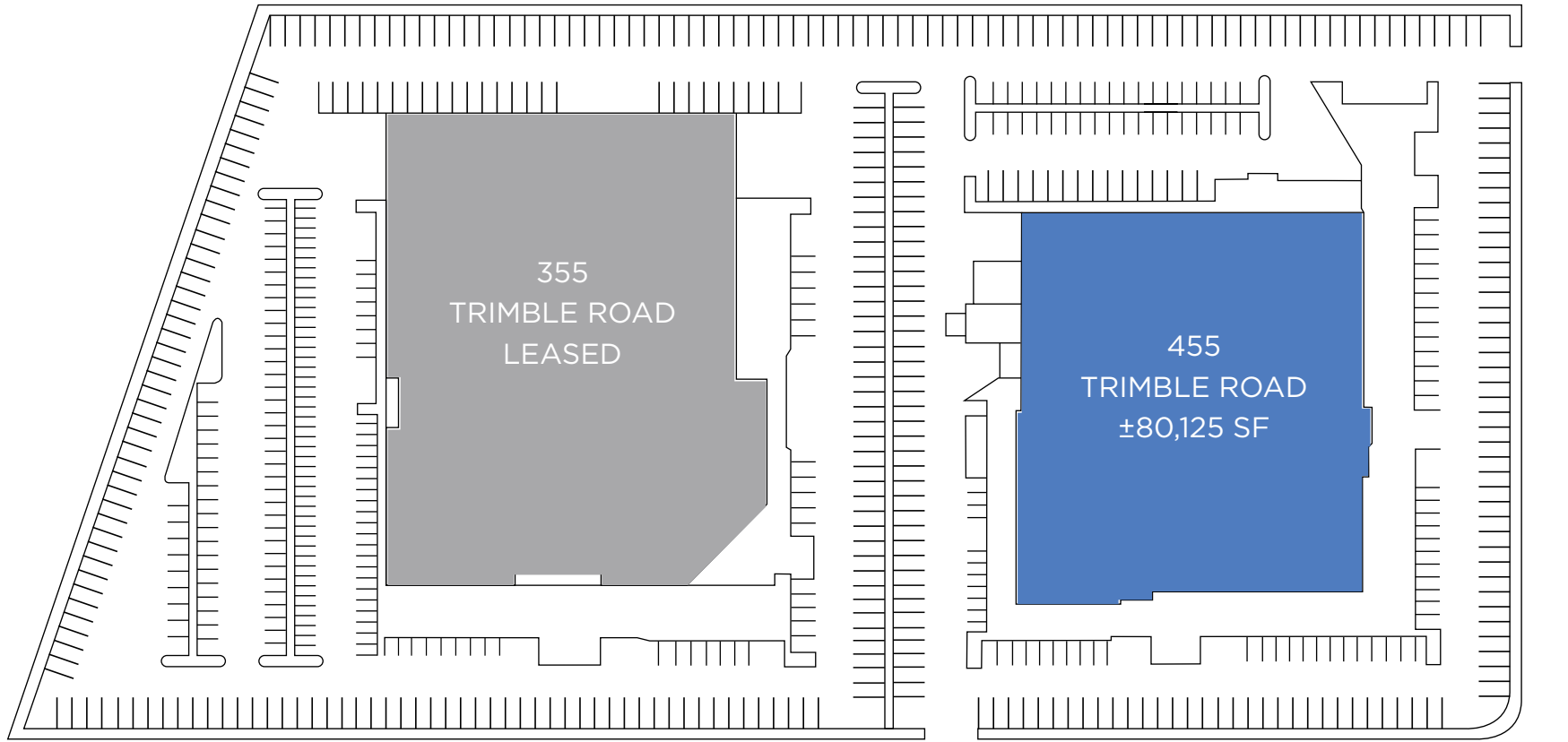


**455 E. Trimble Road: ±80,125 SF**

- Exterior and Interior Market Ready Complete
- Customized Interiors
- Expansive Outdoor Amenity Area
- Excellent Identity and Signage Capabilities
- Access from Trimble Rd and Junction Ave
- Dock & Grade Loading
- Immediate Access to Highways 101, 237, 880 & San Jose International Airport
- Walking Distance to VTA Light Rail
- Adjacent to U.S. Post Office
- Prominent Identity Along Trimble Road
- Near River Oaks and First Street Retail and Amenities
- Walking Distance to Eateries and Hotels



**DOWNLOAD  
BROCHURE**



**TRIMBLE ROAD**

**JUNCTION AVENUE**

NOT EXACT OR TO SCALE



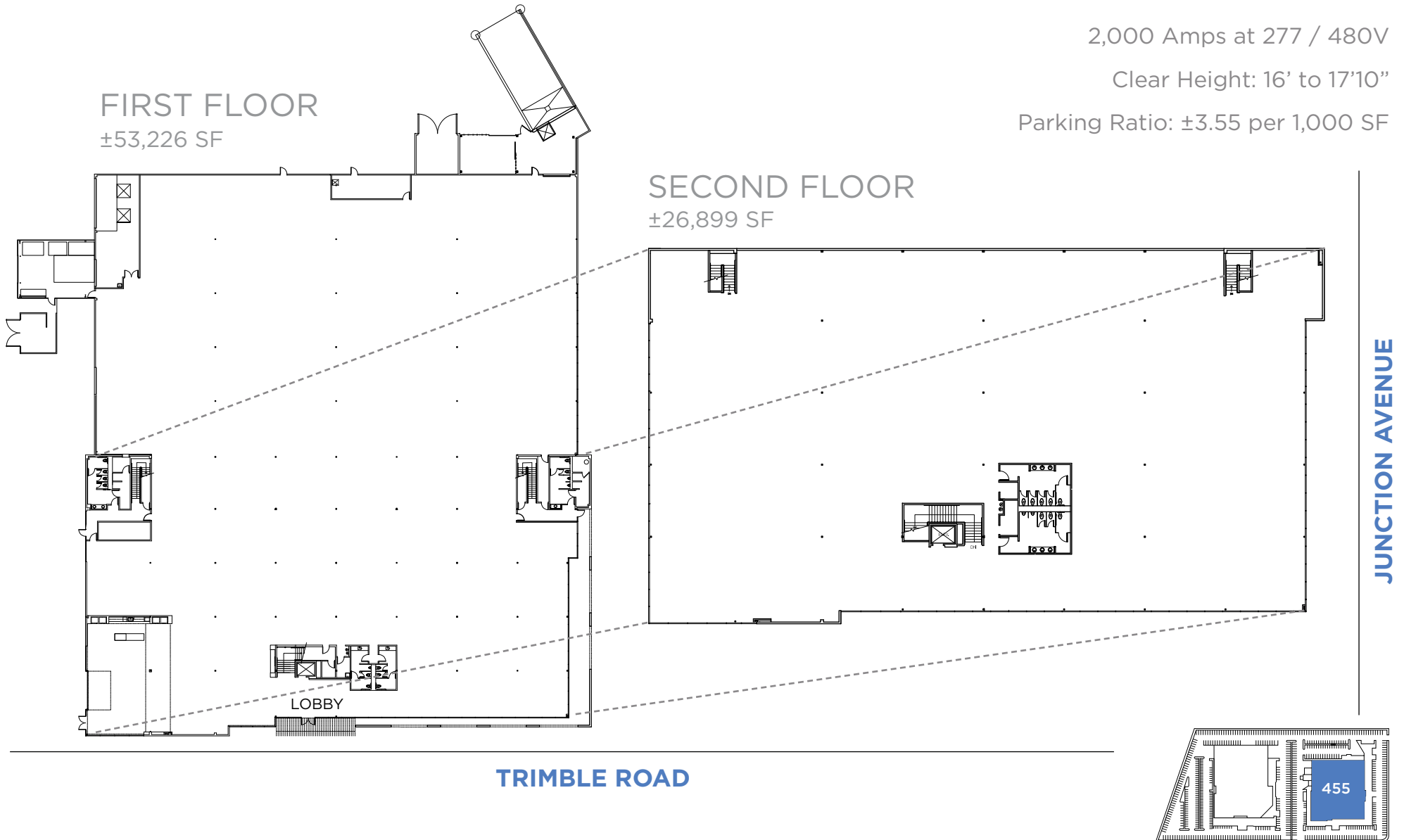


455 E. Trimble Road: ±80,125 SF

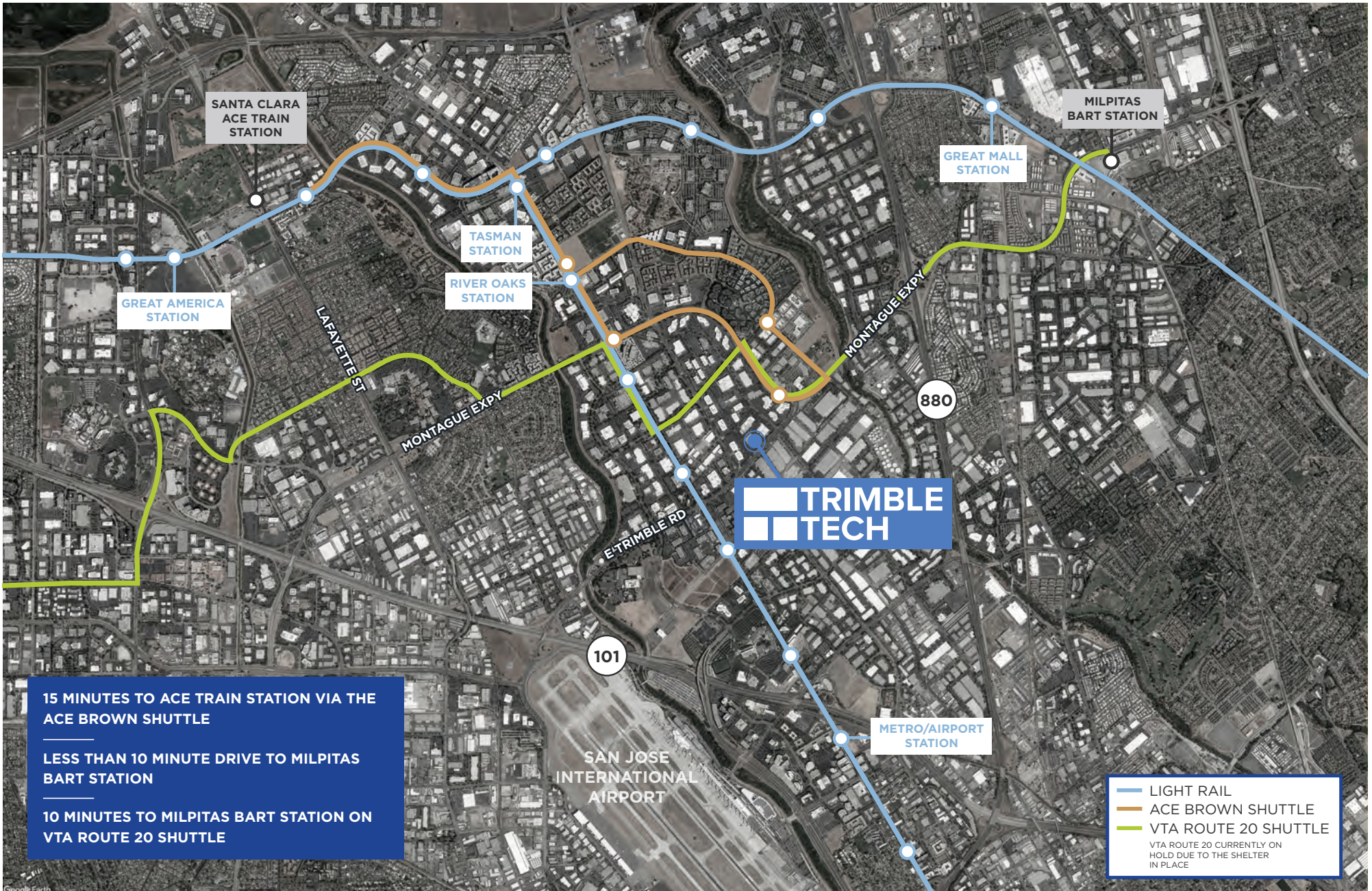
2,000 Amps at 277 / 480V

Clear Height: 16' to 17'10"

Parking Ratio: ±3.55 per 1,000 SF







# TRIMBLE TECH

455 E. TRIMBLE ROAD: ±80,125 SF AVAILABLE

4  
5  
5

**NICK LAZZARINI**  
Managing Director

+1 408 615 3410  
nick.lazzarini@cushwake.com  
LIC. #01788935

**KALIL JENAB**  
Vice Chairman

+1 408 200 8800  
kalil.jenab@cushwake.com  
LIC. #00848988

**KELLY YODER**  
Director

+1 408 615 3427  
kelly.yoder@cushwake.com  
LIC. #01821117

**STEVE HORTON**  
Executive Vice Chairman

+1 408 615 3412  
steve.horton@cushwake.com  
LIC. #01127340



**CUSHMAN &  
WAKEFIELD**

**HIGHLANDS**  
REIT

## VIEW SITE SPECIFIC COVID-19 PREVENTION PLAN

Cushman & Wakefield Copyright 2021. No warranty or representation, express or implied, is made to the accuracy or completeness of the information contained herein, and same is submitted subject to errors, omissions, change of price, rental or other conditions, withdrawal without notice, and to any special listing conditions imposed by the property owner(s). As applicable, we make no representation as to the condition of the property (or properties) in question.