



Flexible & Short-Term Lease Term Available!

OFFICE SPACE FOR LEASE



1355 PEACHTREE ST, ATLANTA, GEORGIA 30309



FLOOR: 17th Floor, Suite 1725

AREA: Approximately 1,541 RSF

RENTAL RATE: \$39.50/ RSF Gross

POSSESSION: Immediately Available

TERM:

- Negotiable
- Shorter Lease Terms Available

FEATURES:

- Excellent Turnkey Office Space Ready to Be Utilized
- Outstanding Views of Skyline and Midtown Arts Center
- Breakroom with Sink
- Conference Room
- Windows in Every Office
- Open Bullpen

BUILDING & AREA AMENITIES:

- Tenant Lounge, Café & Patio with Wifi
- Attached parking garage, 24-hour security, a conference-training center, a fitness center, and concierge services.
- Walking distance to the Arts Center MARTA Station.
- Walkable to over 50 restaurants, 10 hotels, six parks, Woodruff Arts Center, Whole Foods and many residential areas.
- Renovated Lobby & Common Areas

For more information and to schedule visits to 1355 Peachtree Street, please contact:

CRAIG MENDEL

404.840.0252

Craig.Mendel@gmail.com



Flexible & Short-Term Lease Term Available!
OFFICE SPACE FOR LEASE



1355 PEACHTREE ST, ATLANTA, GEORGIA 30309



**For more information and to schedule visits to
1355 Peachtree Street, please contact:**

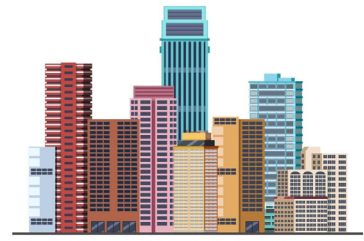
CRAIG MENDEL
404.840.0252

Craig.Mendel@gmail.com

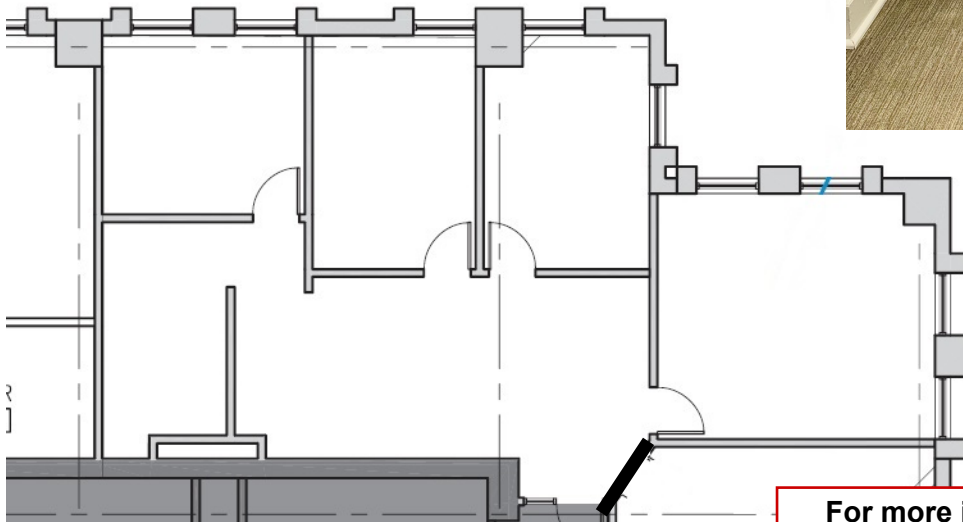


Flexible & Short-Term Lease Term Available!

OFFICE SPACE FOR LEASE



1355 PEACHTREE ST, ATLANTA, GEORGIA 30309



**For more information and to schedule visits to
1355 Peachtree Street, please contact:**

CRAIG MENDEL

404.840.0252

Craig.Mendel@gmail.com

No warranty or representation, express or implied, is made as to the accuracy of the information contained herein, and same is submitted subject to errors omissions, change of price, rental or other conditions, withdrawal without notice, and to any specific listing conditions, imposed by our principals.